

Owner's Manual & Safety Instructions

Save This Manual Keep this manual for the safety warnings and precautions, assembly, operating, inspection, maintenance and cleaning procedures. Write the product's serial number in the back of the manual near the assembly diagram (or month and year of purchase if product has no number). Keep this manual and the receipt in a safe and dry place for future reference.

22k

PITTSBURGH®

DUAL DIRECTION BARREL PUMP



Visit our website at: <http://www.harborfreight.com>
Email our technical support at: productsupport@harborfreight.com

40844

When unpacking, make sure that the product is intact and undamaged. If any parts are missing or broken, please call 1-888-866-5797 as soon as possible.

Copyright© 2022 by Harbor Freight Tools®. All rights reserved.

No portion of this manual or any artwork contained herein may be reproduced in any shape or form without the express written consent of Harbor Freight Tools. Diagrams within this manual may not be drawn proportionally. Due to continuing improvements, actual product may differ slightly from the product described herein. Tools required for assembly and service may not be included.

⚠WARNING

Read this material before using this product. Failure to do so can result in serious injury. **SAVE THIS MANUAL.**

Specifications

Pump Type	Hand-Operated Rotary
Compatibility	Diesel, Kerosene, Heating Oils, Motor Oils, Lubricating Oils (up to SAE 90) and other non-corrosive media
Do Not Use With	Water-based Liquids, Antifreeze, Solvents, Acids, Gasoline
Fits	Standard 2 in. Bung Adapter 30 Gallon (110 L) to 55 Gallon (205 L) Barrels
Pump Inlet	1 in. BSPT (F)
Delivery	5 Gallons (20 L) per 72 turns
Seal Type	NBR
Wetted Components	Steel, Cast Iron, NBR
Dual Direction	Yes
Pump Mechanism	Rotary Vane
Suction Tube Type	3 Piece Rigid Pipe
Suction Tube Length	39.75"

PITTSBURGH[®]

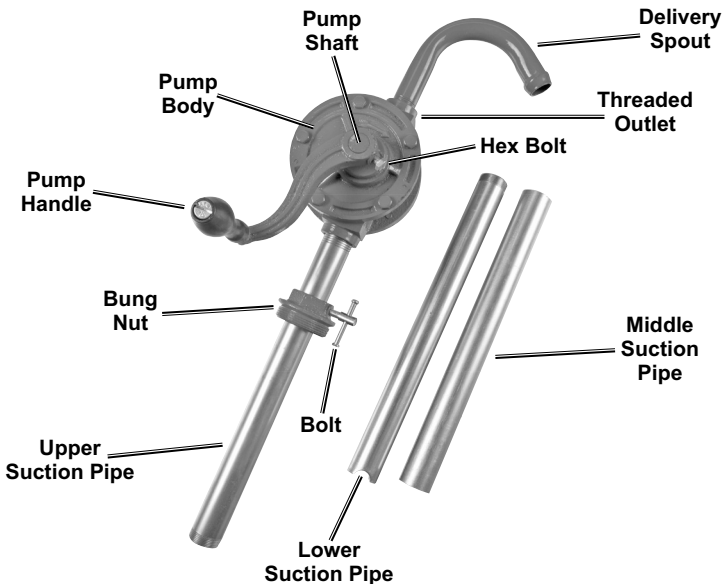
Important Safety Information

- DO NOT USE WITH GASOLINE OR OTHER FLAMMABLE OR HIGHLY REACTIVE FLUIDS. Do not use with acids or alkaline solutions, trichlene, perchlene, thinner, etc.**
- This product is not a toy. Do not allow children to play with or near this item.
- Do not pump used, dirty oil or fluids in this pump.
- Keep Barrel Pump and fluids away from all ignition sources and flammable materials.
- Keep work area clean. Cluttered areas invite injuries.
- Observe work area conditions. Do not use the Pump in damp or wet locations. Don't expose to rain. Keep work area well lighted.
- Assemble and use only according to these instructions.
- Wear ANSI-approved safety goggles during assembly and use.
- Do not assemble or use when tired or when under the influence of drugs or medication.
- Use as intended only.
- Inspect before every use; do not use if parts are loose or damaged.
- Maintain product labels and nameplates. These carry important safety information. If unreadable or missing, contact Harbor Freight Tools for a replacement.

PITTSBURGH[®]

Assembly

Components



Assembly

IMPORTANT: All pipe threads must have a sealant applied when threading parts together to protect against leaks. Use a fuel and oil resistant thread sealant.

1. Thread the Upper Suction Pipe — the end whose threads match the Middle Suction Pipe — into one end of the Middle Suction Pipe.
2. Thread the Lower Suction Pipe into the other end of the Middle Suction Pipe.
3. Slide Bung Nut onto assembled Suction Pipe with threaded side down.
4. Insert Suction Pipe into barrel.
5. Screw Bung Nut into barrel.
6. Tighten Bolt on Bung Nut to secure Suction Pipe.
7. Screw Pump Body onto top of Upper Suction Pipe.
8. Slide Pump Handle onto Pump Shaft and tighten Hex Bolt.
9. Screw Delivery Spout into threaded outlet on top of Pump Body.

Operation

Assemble Barrel Pump and mount to barrel as described in *Assembly* on page 4.

Operation – Pump Dispensing

1. Turn Delivery Spout upwards and pour in a few drops of applicable liquid to prime Pump.
2. Attach a 1" inner diameter hose (not included) to end of Delivery Spout if needed.
3. Place appropriate discharge container under Delivery Spout or hose end.
4. Loosen Bolt on Bung Nut and submerge lower portion of Suction Pipe into fluid to be transferred. Tighten Bolt securely.

NOTICE: Do not rest Suction Pipe on bottom of barrel or tank. It must sit at least 1" up from the bottom.

5. Rotate Pump Handle clockwise to begin the liquid transfer.
6. When transfer is complete, remove Barrel Pump and wipe dry.
7. Dispose of fluids in accordance with all applicable local, state and federal laws.

Note: Avoid pumping water or dirty residue through Barrel Pump. Raise bottom of Suction Pipe above the dirty residue.

Operation – Pump Extraction

1. The Barrel Pump can be used to extract fluid from a container back into the barrel or tank.
2. Attach a 1" inner diameter hose (not included) to end of Delivery Spout.
3. Put the hose into the fluid container to be drained.

Note: If the container has water or dirty residue on the bottom, raise the end of the hose above the residue to avoid running it through the Barrel Pump.

4. Rotate Pump Handle counterclockwise to begin the liquid transfer.
5. When transfer is complete, remove Barrel Pump and wipe dry.
6. Dispose of any residual fluids in accordance with all applicable local, state and federal laws.

Maintenance Instructions



Procedures not specifically explained in this manual must be performed only by a qualified technician.

⚠️ WARNING

TO PREVENT SERIOUS INJURY FROM ACCIDENTAL OPERATION:
Do not use damaged equipment. If abnormal noise or operation occurs, have the problem corrected before further use.

1. **BEFORE EACH USE**, inspect the general condition of the Barrel Pump. Check for:
 - loose hardware or housing
 - cracked, broken or bent parts
 - loose or missing parts
 - misalignment or binding of moving parts
 - any other condition that may affect its safe operation.
2. **AFTER EACH USE**, wipe off unit. Store in a clean, dry place out of reach of children.
3. **PERIODICALLY**, use a light lubricant on Pump Handle's pivot parts.
4. Keep suction and delivery ports free of dirt and debris. Periodically clean the suction tube and discharge outlet.
5. If Pump Body Cover is removed for maintenance, apply a thin layer of RTV Silicone around outside edges when replacing Cover to prevent leaks.

If a problem occurs, correct before further use.

Troubleshooting

Problem	Possible Causes	Likely Solutions
Unit does not pump fluid	<ol style="list-style-type: none"> 1. Pump not able to produce adequate suction. 2. Pump drawing in air instead of fluid. 3. Suction Tube inlet is blocked 4. All fluid has been removed. 	<ol style="list-style-type: none"> 1. Prime the Pump. 2. Tighten all connections of Suction Tube and Suction Tube to Pump Body. 3. Remove Suction Tube and clean the tube inlet. 4. Verify there is still fluid to be removed.
Fluid leakage from the Pump Shaft	Seal damaged from fluids not suitable for use with Pump.	Replace seal with identical replacement seal.
Tight Pump Handle movement	<ol style="list-style-type: none"> 1. Pump has been idle for extended period. 2. Damaged or worn parts. 	<ol style="list-style-type: none"> 1. Remove Pump Body Cover and inspect parts. Clean or replace parts as necessary. 2. Remove Pump Body Cover and inspect parts. Replace worn or damaged parts.

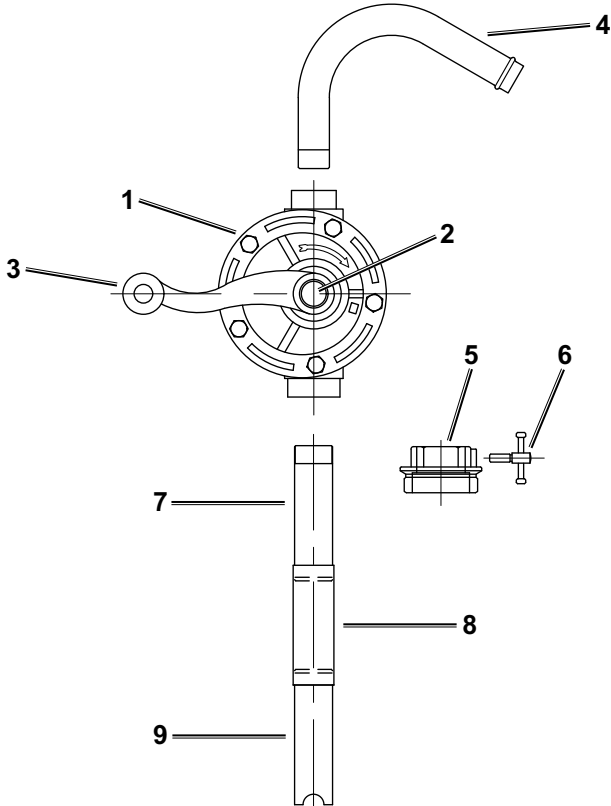


Follow all safety precautions whenever diagnosing or servicing the Barrel Pump.

Parts List and Diagram

Part	Description	Qty.
1	Pump Body	1
2	Pump Shaft	1
3	Pump Handle	1
4	Delivery Spout	1
5	Bung Nut	1

Part	Description	Qty.
6	Bung Nut Bolt	1
7	Upper Suction Pipe	1
8	Middle Suction Pipe	1
9	Lower Suction Pipe	1



Record Serial Number Here: _____

Note: If product has no serial number, record month and year of purchase instead.

Note: Some parts are listed and shown for illustration purposes only, and are not available individually as replacement parts. Specify UPC 193175502551 when ordering parts.

PLEASE READ THE FOLLOWING CAREFULLY

THE MANUFACTURER AND/OR DISTRIBUTOR HAS PROVIDED THE PARTS LIST AND ASSEMBLY DIAGRAM IN THIS MANUAL AS A REFERENCE TOOL ONLY. NEITHER THE MANUFACTURER OR DISTRIBUTOR MAKES ANY REPRESENTATION OR WARRANTY OF ANY KIND TO THE BUYER THAT HE OR SHE IS QUALIFIED TO MAKE ANY REPAIRS TO THE PRODUCT, OR THAT HE OR SHE IS QUALIFIED TO REPLACE ANY PARTS OF THE PRODUCT. IN FACT, THE MANUFACTURER AND/OR DISTRIBUTOR EXPRESSLY STATES THAT ALL REPAIRS AND PARTS REPLACEMENTS SHOULD BE UNDERTAKEN BY CERTIFIED AND LICENSED TECHNICIANS, AND NOT BY THE BUYER. THE BUYER ASSUMES ALL RISK AND LIABILITY ARISING OUT OF HIS OR HER REPAIRS TO THE ORIGINAL PRODUCT OR REPLACEMENT PARTS THERETO, OR ARISING OUT OF HIS OR HER INSTALLATION OF REPLACEMENT PARTS THERETO.

Limited 90 Day Warranty

Harbor Freight Tools Co. makes every effort to assure that its products meet high quality and durability standards, and warrants to the original purchaser that this product is free from defects in materials and workmanship for the period of 90 days from the date of purchase. This warranty does not apply to damage due directly or indirectly, to misuse, abuse, negligence or accidents, repairs or alterations outside our facilities, criminal activity, improper installation, normal wear and tear, or to lack of maintenance. We shall in no event be liable for death, injuries to persons or property, or for incidental, contingent, special or consequential damages arising from the use of our product. Some states do not allow the exclusion or limitation of incidental or consequential damages, so the above limitation of exclusion may not apply to you. THIS WARRANTY IS EXPRESSLY IN LIEU OF ALL OTHER WARRANTIES, EXPRESS OR IMPLIED, INCLUDING THE WARRANTIES OF MERCHANTABILITY AND FITNESS.

To take advantage of this warranty, the product or part must be returned to us with transportation charges prepaid. Proof of purchase date and an explanation of the complaint must accompany the merchandise. If our inspection verifies the defect, we will either repair or replace the product at our election or we may elect to refund the purchase price if we cannot readily and quickly provide you with a replacement. We will return repaired products at our expense, but if we determine there is no defect, or that the defect resulted from causes not within the scope of our warranty, then you must bear the cost of returning the product.

This warranty gives you specific legal rights and you may also have other rights which vary from state to state.

PITTSBURGH[®]