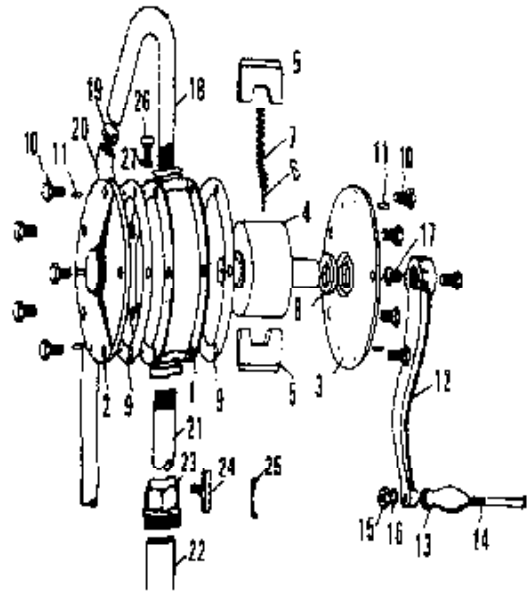


HAND ROTARY PUMP (BARREL PUMP)

ASSEMBLY & OPERATION

1. Insert the suction pipe assembly (21) into the barrel.
2. Slide the bung nut (23) over the suction pipe and screw it onto the barrel. Use the bolt (24) to tighten the suction pipe assembly.
3. Screw the pump body onto the suction pipe assembly (21).
4. Slide the handle (12) over the pump shaft and tighten it using the hexagon bolt (17).
5. Screw the delivery spout (18) onto the threaded outlet on top of the pump body.
6. Prime the pump, if necessary, using a few drops of oil, by turning the discharge spout (18) upwards.



PARTS LIST

ITEM Nr.	DESCRIPTION	QTY.
1	PUMP CASTING	1
2	COVER PLATE	1
3	COVER PLATE	1
4	SHAFT	1
5	IMPELLER	1
6	IMPELLER PIN	1
7	SPRING	1
8	OIL SEAL	1
9	COVER PACKING	1
10	HEXAGONAL BOLT	10
11	TAPER PIN	1
12	HANDLE	1
13	PLASTIC GRIP	1

ITEM Nr.	DESCRIPTION	QTY.
14	GRIP SHAFT	1
15	NUT	1
16	WASHER	1
17	HEXAGONAL BOLT	1
18	DISCHARGE SPOUT	1
19	HOSE BAND	1
20	VINYL HOSE (Accessory)	1
21	SUCTION PIPE ASSEMBLY	1
22	STRAINER	1
23	BUNG NUT	1
24	TIGHTENING BOLT	1

FITS : 30 gallons (100 litres) to 55 gallons (205 litres) Barrels.

DELIVERY : 5 gallons or 20 litres / 105 turns for ¾" pump. 5 gallons (20 litres) / 72 turns for 1" pump.

COMPLETE WITH : A choice of a 3 piece rigid extension tube or a telescopic suction tube, bung nut and discharge spout.

SUITABLE FOR : Transferring non corrosive petroleum based fluids, gasoline, kerosene and light oils.

DO NOT USE WITH : Acids or alkaline solutions, trichlene, perchlene, thinner, etc.