

Owner's Manual & Safety Instructions

Save This Manual Keep this manual for the safety warnings and precautions, assembly, operating, inspection, maintenance and cleaning procedures. Write the product's serial number in the back of the manual near the assembly diagram (or month and year of purchase if product has no number). Keep this manual and the receipt in a safe and dry place for future reference.



2-Piece Foldable SAWHORSE SET



REV 14i

Visit our website at: <http://www.harborfreight.com>
Email our technical support at: productsupport@harborfreight.com **ITEM 41577**

When unpacking, make sure that the product is intact and undamaged. If any parts are missing or broken, please call 1-888-866-5797 as soon as possible.

Copyright© 2000 by Harbor Freight Tools®. All rights reserved.
No portion of this manual or any artwork contained herein may be reproduced in any shape or form without the express written consent of Harbor Freight Tools. Diagrams within this manual may not be drawn proportionally. Due to continuing improvements, actual product may differ slightly from the product described herein.
Tools required for assembly and service may not be included.

⚠ WARNING

**Read this material before using this product.
Failure to do so can result in serious injury.
SAVE THIS MANUAL.**

Specifications (per Sawhorse)

Wood Top Dimensions	32" x 5-1/2" x 1-1/2"
Height	30"
Maximum Weight Capacity	1000 lb for each Sawhorse (must be used in pairs)

IMPORTANT SAFETY INFORMATION

Assembly Precautions

1. Assemble only according to these instructions. Improper assembly can create hazards.
2. Wear ANSI-approved safety goggles and heavy-duty work gloves during assembly.
3. Keep assembly area clean and well lit.
4. Keep bystanders out of the area during assembly.
5. Do not assemble when tired or when under the influence of alcohol, drugs or medication.
6. Weight capacity and other product capabilities apply to properly and completely assembled product only.

Use Precautions

1. This product is not a toy. Do not allow children to play with or near this item.
2. Use on flat, level, hard surface able to support load.
3. Wear ANSI-approved safety goggles during assembly and use.
4. Use as intended only. Use at least two sawhorses to support load.
5. Inspect before every use; do not use if parts loose or damaged.
6. Secure the workpiece to the sawhorses, if possible.
7. Do not exceed listed weight capacity 1,000 lb weight capacity, evenly distributed across two sawhorses.
Be aware of dynamic loading!
Sudden load movement may briefly create excess load causing product failure.
8. Maintain product labels and nameplates. These carry important safety information. If unreadable or missing, contact Harbor Freight Tools for a replacement.
9. The warnings, cautions, and instructions discussed in this instruction manual cannot cover all possible conditions and situations that may occur. It must be understood by the operator that common sense and caution are factors which cannot be built into this product, but must be supplied by the operator.

Assembly Instructions



Read the **ENTIRE IMPORTANT SAFETY INFORMATION** section at the beginning of this document including all text under subheadings therein before set up or use of this product.

1. There are four holes in the primary plate of the Leg Mounting Bracket (2). Use four Screws (8) to attach the Bracket to the Wooden Board through those holes. Repeat on the opposite end of the Wooden Board.
2. Place the end of a leg into one side of the Leg Mounting Bracket, lined up with the mounting holes in the walls of the Bracket. The open side of the leg should face inward. See Figure A.

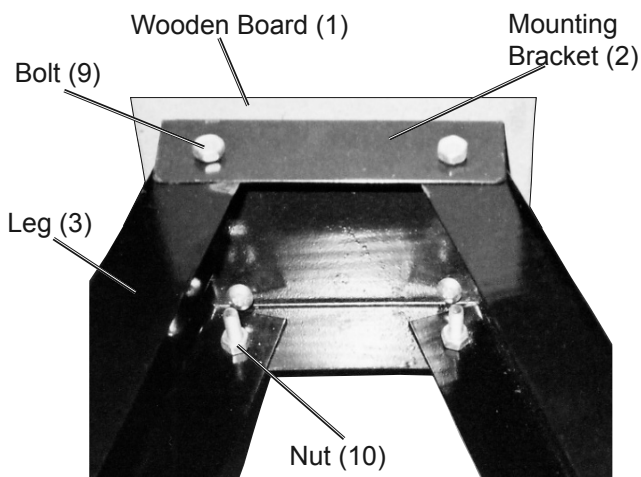


Figure A

3. Secure the Leg to the Bracket with Bolt (9) and Nut (10). Tighten enough to allow limited movement. Repeat with the remaining Legs.
4. Place a Foot (5) on the end of each Leg (3). Note the angle of the Foot: the longer edge of the Foot should be on the outer side of the Leg. See Figure B.

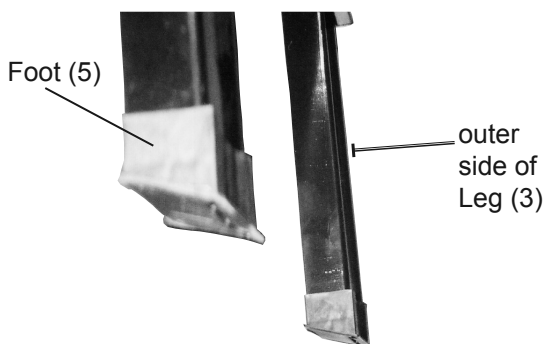


Figure B

5. Attach the Brace (4) between two of the Legs on one side of the Sawhorse. See Figure C.

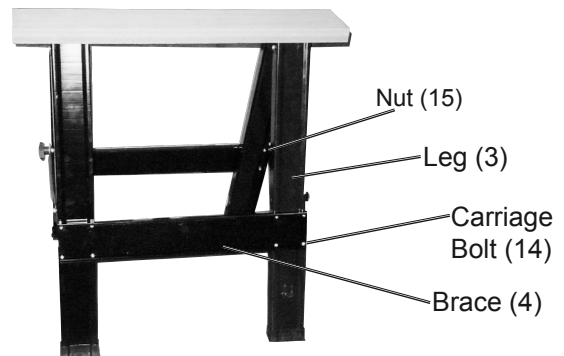


Figure C

- a. Press the flat side of the Brace against the outside of the Legs.
 - b. Secure with four Carriage Bolts (14) and Nuts (15).
 - c. Leave all hardware in this step slightly loose for now.
 - d. Repeat on the opposite side.
6. Attach the closed end of the Leg Locking Brace (6) between two of the Legs on one end of the Sawhorse, using a Bolt (9), Washer (12), and Nylon Insert Nut (11). Ensure that the hook opening of the Leg Locking Brace faces toward the ground. (See Figure F). Tighten the Bolt and Nut enough to allow movement. See Figure D and Figure E.

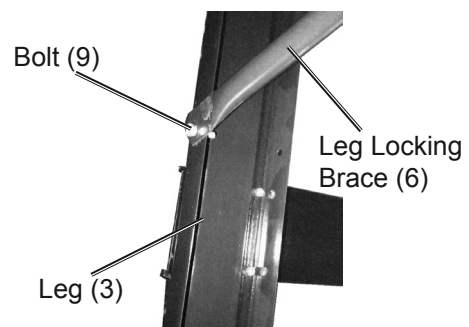


Figure D

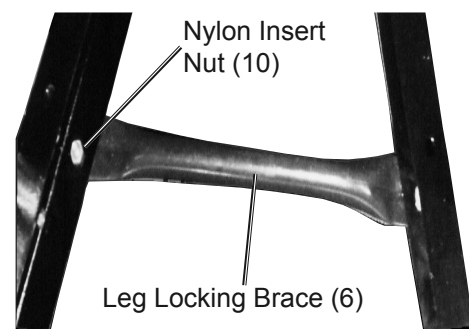


Figure E

7. Install a Bolt on the opposite Leg.
 - a. Insert a Bolt through the mounting holes from the inside of the Leg.
 - b. Add a Split Lock Washer (13) and Nut to the outer side of the Leg, leaving the Bolt exposed.
 - c. Tighten securely.
 - d. Hook the open end of the Leg Locking Brace over the exposed Bolt.
 - e. Twist the Locking Knob (7) on the exposed threads of the Bolt to clamp the Brace in place.
 - f. Hand tighten. See Figure F.

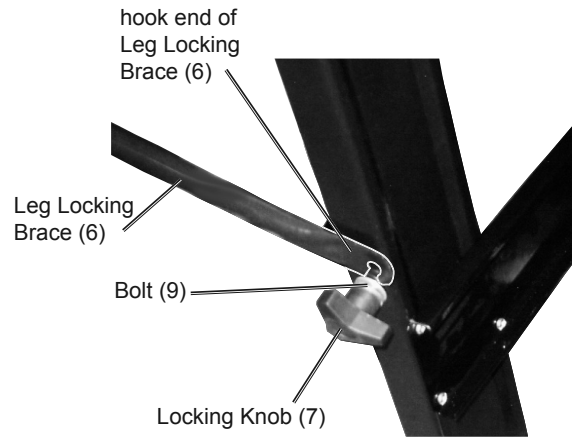


Figure F

8. Install another Locking Brace and Bolt to the opposite pair of legs.
9. Set the Sawhorse up on flat level ground. Tighten any loose hardware. (This helps to ensure that the sawhorse will sit level.)
10. Repeat the entire assembly procedure with the other Sawhorse.



Operation



Read the **ENTIRE IMPORTANT SAFETY INFORMATION** section at the beginning of this manual including all text under subheadings therein before set up or use of this product.

!WARNING

Inspect tool before use, looking for damaged, loose, and missing parts. If any problems are found, do not use tool until repaired.

Before use, double check that the Leg Locking Braces are securely attached to the bolts.

Set Up

1. Lay the Sawhorse on the ground, Wooden Board face down. Pull the Legs out on each side.
2. Loosen both Locking Knobs.
3. Swing the Leg Locking Brace so that it catches on the exposed Bolt. Repeat on other side.
4. Tighten both Locking Knobs.
5. Carefully turn over the Sawhorse.
6. Repeat on second Sawhorse.
7. **WARNING! Confirm that the Leg Locking Braces are securely attached to the Bolts and all hardware is tight before every use.**

Collapse

1. Loosen the Locking Knobs.
2. Lift up the hooked end of the Leg Locking Brace and allow the Leg Locking Brace to dangle.
3. Repeat on the opposite side.
4. Close the Sawhorse Legs and retighten the Locking Knobs.

Maintenance



Procedures not specifically explained in this manual must be performed only by a qualified technician.

!WARNING

TO PREVENT SERIOUS INJURY FROM TOOL FAILURE:

Do not use damaged equipment. If damage is found, have the problem corrected before further use.

Cleaning, Maintenance, and Lubrication

1. **BEFORE EACH USE**, inspect the general condition of the tool. Check for:
 - loose hardware,
 - misalignment or binding of moving parts,
 - cracked or broken parts, and
 - any other condition that may affect its safe operation.
2. **AFTER USE**, wipe external surfaces of the tool with clean cloth.

Parts List and Diagram

Parts List (Parts for each sawhorse. 2 sawhorses included.)

Part	Description	Qty
1	Wooden Board	1
2	Leg Mounting Bracket	2
3	Leg	4
4	Brace	2
5	Foot	4
6	Leg Locking Brace	2
7	Locking Knob	2
8	Wood Screw	8

Part	Description	Qty
9	Bolt - M6 x 3/4"	12
10	Nut - M6	10
11	Nylon Insert Nut - M6	2
12	Washer	4
13	Split Lock Washer	2
14	Carriage Bolt - M5 x 5/16"	16
15	Nut - M5	16

PLEASE READ THE FOLLOWING CAREFULLY

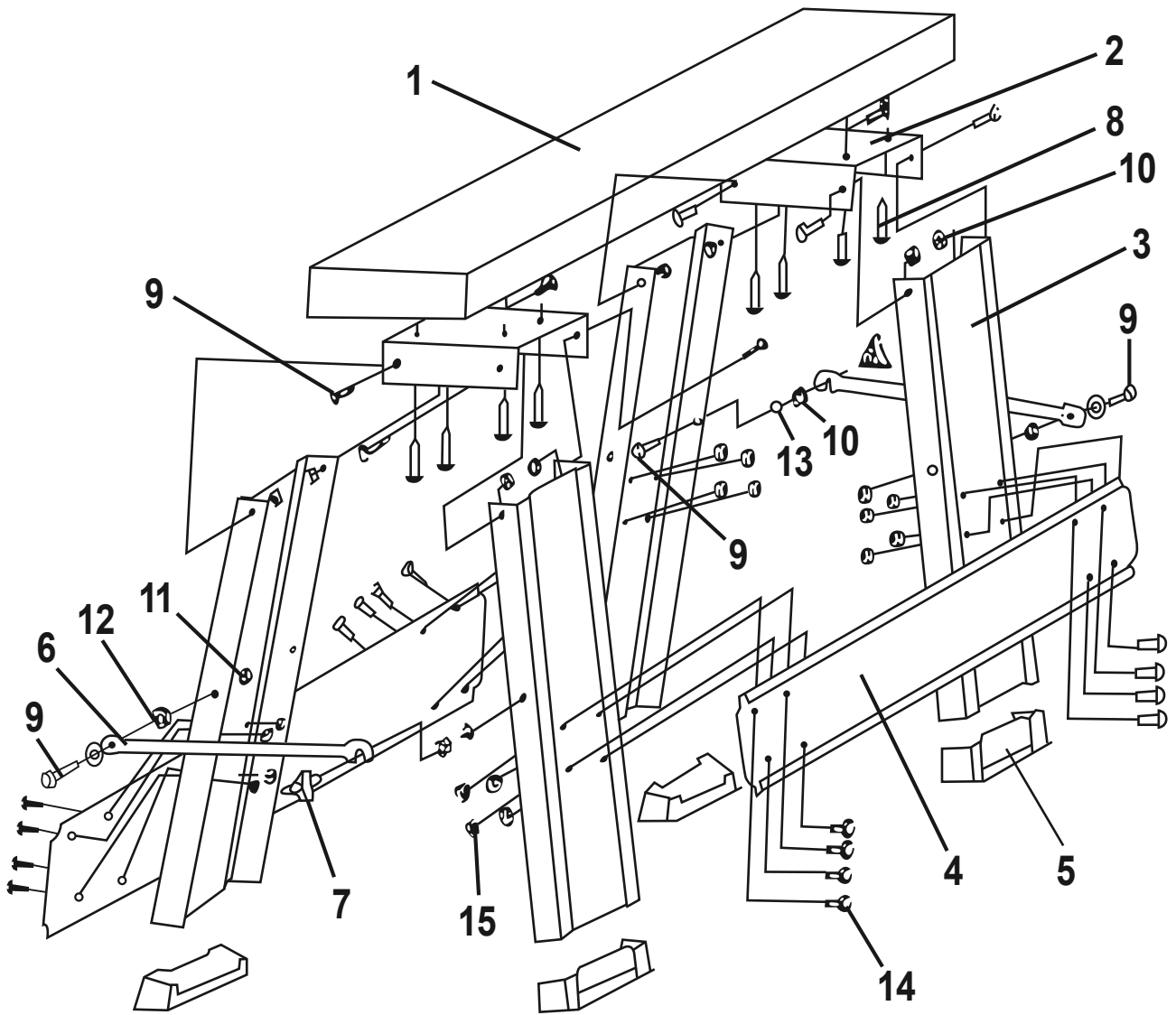
THE MANUFACTURER AND/OR DISTRIBUTOR HAS PROVIDED THE PARTS LIST AND ASSEMBLY DIAGRAM IN THIS DOCUMENT AS A REFERENCE TOOL ONLY. NEITHER THE MANUFACTURER OR DISTRIBUTOR MAKES ANY REPRESENTATION OR WARRANTY OF ANY KIND TO THE BUYER THAT HE OR SHE IS QUALIFIED TO MAKE ANY REPAIRS TO THE PRODUCT, OR THAT HE OR SHE IS QUALIFIED TO REPLACE ANY PARTS OF THE PRODUCT. IN FACT, THE MANUFACTURER AND/OR DISTRIBUTOR EXPRESSLY STATES THAT ALL REPAIRS AND PARTS REPLACEMENTS SHOULD BE UNDERTAKEN BY CERTIFIED AND LICENSED TECHNICIANS, AND NOT BY THE BUYER. THE BUYER ASSUMES ALL RISK AND LIABILITY ARISING OUT OF HIS OR HER REPAIRS TO THE ORIGINAL PRODUCT OR REPLACEMENT PARTS THERETO, OR ARISING OUT OF HIS OR HER INSTALLATION OF REPLACEMENT PARTS THERETO.

Record Serial Number Here:

Note: If product has no serial number, record month and year of purchase instead.

Note: Some parts are listed and shown for illustration purposes only, and are not available individually as replacement parts.

Assembly Diagram



Limited 90 Day Warranty

Harbor Freight Tools Co. makes every effort to assure that its products meet high quality and durability standards, and warrants to the original purchaser that this product is free from defects in materials and workmanship for the period of 90 days from the date of purchase. This warranty does not apply to damage due directly or indirectly, to misuse, abuse, negligence or accidents, repairs or alterations outside our facilities, criminal activity, improper installation, normal wear and tear, or to lack of maintenance. We shall in no event be liable for death, injuries to persons or property, or for incidental, contingent, special or consequential damages arising from the use of our product. Some states do not allow the exclusion or limitation of incidental or consequential damages, so the above limitation of exclusion may not apply to you. THIS WARRANTY IS EXPRESSLY IN LIEU OF ALL OTHER WARRANTIES, EXPRESS OR IMPLIED, INCLUDING THE WARRANTIES OF MERCHANTABILITY AND FITNESS.

To take advantage of this warranty, the product or part must be returned to us with transportation charges prepaid. Proof of purchase date and an explanation of the complaint must accompany the merchandise. If our inspection verifies the defect, we will either repair or replace the product at our election or we may elect to refund the purchase price if we cannot readily and quickly provide you with a replacement. We will return repaired products at our expense, but if we determine there is no defect, or that the defect resulted from causes not within the scope of our warranty, then you must bear the cost of returning the product.

This warranty gives you specific legal rights and you may also have other rights which vary from state to state.

