

# Owner's Manual & Safety Instructions

**Save This Manual** Keep this manual for the safety warnings and precautions, assembly, operating, inspection, maintenance and cleaning procedures. Write the product's serial number in the back of the manual near the assembly diagram (or month and year of purchase if product has no number). Keep this manual and the receipt in a safe and dry place for future reference.

20j

**CHICAGO  
ELECTRIC®**

# WELDING

## AUTO DARKENING WELDING HELMET



Visit our website at: <http://www.harborfreight.com>  
Email our technical support at: [productsupport@harborfreight.com](mailto:productsupport@harborfreight.com)

46092

When unpacking, make sure that the product is intact and undamaged. If any parts are missing or broken, please call 1-888-866-5797 as soon as possible.

Copyright© 2020 by Harbor Freight Tools®. All rights reserved.

No portion of this manual or any artwork contained herein may be reproduced in any shape or form without the express written consent of Harbor Freight Tools. Diagrams within this manual may not be drawn proportionally. Due to continuing improvements, actual product may differ slightly from the product described herein. Tools required for assembly and service may not be included.

### **⚠ WARNING**

Read this material before using this product. Failure to do so can result in serious injury.  
**SAVE THIS MANUAL.**

# Table of Contents

Safety .....	3	Maintenance and Servicing .....	9
Specifications .....	5	Parts List and Diagram .....	10
Operation .....	6	Warranty .....	12






SAFETY

SPECIFICATIONS

OPERATION

MAINTENANCE

## WARNING SYMBOLS AND DEFINITIONS

	This is the safety alert symbol. It is used to alert you to potential personal injury hazards. Obey all safety messages that follow this symbol to avoid possible injury or death.
	Indicates a hazardous situation which, if not avoided, will result in death or serious injury.
	Indicates a hazardous situation which, if not avoided, could result in death or serious injury.
	Indicates a hazardous situation which, if not avoided, could result in minor or moderate injury.
	Addresses practices not related to personal injury.

# IMPORTANT SAFETY INFORMATION

When using helmet, basic safety precautions should always be followed to reduce the risk of personal injury and damage to equipment.

The warnings, cautions, and instructions discussed in this instruction manual cannot cover all possible conditions and situations that may occur. It must be understood by the operator that common sense and caution are factors which cannot be built into this product, but must be supplied by the operator.

**Read all instructions before using this helmet!**

## ⚠ WARNING



### **INHALATION HAZARD: Welding and Plasma Cutting Produce TOXIC FUMES.**

Exposure to welding or cutting exhaust fumes can increase the risk of developing certain cancers, such as cancer of the larynx and lung cancer. Also, some diseases that may be linked to exposure to welding or plasma cutting exhaust fumes are:

- Early onset of Parkinson's Disease
- Heart disease
- Ulcers
- Damage to the reproductive organs
- Inflammation of the small intestine or stomach
- Kidney damage
- Respiratory diseases such as emphysema, bronchitis, or pneumonia

Use natural or forced air ventilation and wear a respirator approved by NIOSH to protect against the fumes produced to reduce the risk of developing the above illnesses.

1. **Do not use the Welding Helmet if the lens is cracked, if the lens or sensors are dirty, or if the lens or front retaining frame is loose.**
2. **Keep work area clean.** Cluttered areas invite injuries.
3. **Observe work area conditions.** Do not use welding helmets in damp or wet locations. Do not expose to rain. Keep work area well lit. Do not use auto-darkening helmets in the presence of flammable gases or liquids.
4. **Keep children away.** Children must never be allowed in the work area. Do not let them handle this helmet. Dress properly. Do not wear loose clothing or jewelry. Keep your hair, clothing and gloves away from moving parts.
5. **Store idle equipment.** When not in use, helmets must be stored in a dry location to inhibit rust. Always lock up helmets and keep out of reach of children.
6. **Dress properly.** Do not wear loose clothing or jewelry as they can be caught in moving parts. Protective gear is essential to protect against welding rays, some examples are: a leather welding apron, welding sleeves, jeans without cuffs, work boots. Wear restrictive hair covering to contain long hair.
7. **Use eye and ear protection.** When welding, wear ANSI-approved impact safety goggles under the Welding Helmet. Wear a NIOSH-approved respirator and hearing protection when welding.
8. **Stay alert.** Watch what you are doing, use common sense. Do not weld when you are tired.
9. **Check for damaged parts.** Before using any helmet, any part that appears damaged should be carefully checked to determine that it will operate properly and perform its intended function. Check for alignment and binding of moving parts; any broken parts or mounting fixtures; and any other condition that may affect proper operation. Any part that is damaged should be properly repaired or replaced by a qualified technician. Do not use the helmet if any switch does not operate properly.
10. **Replacement parts and accessories.** When servicing, use only identical replacement parts. Use of any other parts can render helmet ineffective, possibly causing eye damage, and will void the warranty. Only use accessories intended for use with this helmet. Approved accessories are available from Harbor Freight Tools.
11. **Do not weld if under the influence of alcohol or drugs.** Read warning labels on prescriptions to determine if your judgment or reflexes are impaired while taking drugs. If there is any doubt, do not weld.

12. **Maintenance.** For your safety, service and maintenance should be performed regularly only by a qualified technician.
13. **This helmet provides protection for intended purposes only.** There are certain applications for which this helmet was designed. Do not modify this helmet and do not use this helmet for a purpose for which it was not intended:
  - a. **The Welding Helmet** is not suitable for Plasma cutting, Laser welding or Oxyacetylene welding/cutting processes.
  - b. **The Welding Helmet** will not protect against severe impact hazards.
  - c. **The Welding Helmet** will not protect against explosive devices or corrosive liquids.
14. **Use only at temperatures within the operating range for your model as stated on the specifications chart in this manual.**
15. Maintain the helmet and lens correctly to help ensure reliable protection:
  - a. Clean filter's surfaces regularly. Keep sensors and solar cells clean using a clean lint-free tissue/cloth. Do not use any solvents on filter's screen or helmet components. Protect filter from liquid and dirt contact. Do not immerse the filter in water.
- b. Should the Auto-Darkening Welding Helmet not darken upon striking an arc, stop welding immediately and have the helmet checked by a qualified service technician.
- c. Regularly replace the Front Lens Cover if it becomes cracked, scratched, pitted, or otherwise damaged.
- d. Do not make any modifications to either the Auto-Darkening Filter or the rest of the helmet, other than those specified in this manual. Do not use any replacement parts other than those specified in this manual. Unauthorized modifications and replacement parts will void the warranty and expose the user to the risk of personal injury. Do not open or tamper with the Auto-Darkening Filter.
16. Do not place the Welding Helmet's Auto-Darkening Filter on a hot surface.
17. **SEVERE PERSONAL INJURY and/or BLINDNESS may occur if the user fails to follow the aforementioned warnings and/or fails to follow the operation instructions.**
18. Maintain labels and nameplates on the tool. These carry important safety information. If unreadable or missing, contact Harbor Freight Tools for a replacement.



**SAVE THESE INSTRUCTIONS.**

**CHICAGO ELECTRIC® WELDING**

## Specifications

Description	Auto-Darkening Welding Helmet
Power Source	Solar powered cells with battery assistance (not rechargeable)
Operating Temperature	14° to 149° F
Resting Shade	Shade #4
Shade Range	9 to 13
UV/IR Protection	Up to DIN 15 at all times
Lens Type	ANSI Z87.1-2015 approved
Viewing Area	3-5/8" x 1-2/3"
Welding Protection Types	For all Arc welding processes. Not for Plasma cutting. Not for Laser welding or Oxyacetylene welding/cutting.
Lens Switching Speed (Clear to Dark)	1/20,000 second
Sensitivity Adjustment	Min–Max adjustable
Power ON/OFF	Fully Automatic
Shell Material	High Impact-Resistant Polyamide Nylon
Storage Temperature	-4° to 158° F
Features	Ratcheting headband with replaceable padded sweatband, 2 independent arc sensors which reduce the risk of blocked sensors during out-of-position welding, variable Shade Control Knob adjusts from #9 to #13 with a #4 resting shade, Delay Control Knob, Sensitivity Control Knob

## Shade Guide Chart

Welding Process	Arc Current (Amperes)																	
	1020 1045 1060 1080 1095 1117 1137 1157 1188 1218 1248 1279 1310 1341 1372 1403 1434 1465 1496 1527 1558 1589 1620 1651 1682 1713 1744 1775 1806 1837 1868 1899 1930 1961 1992 2023 2054 2085 2116 2147 2178 2209 2240 2271 2302 2333 2364 2395 2426 2457 2488 2519 2550 2581 2612 2643 2674 2705 2736 2767 2798 2829 2860 2891 2922 2953 2984 3015 3046 3077 3108 3139 3170 3201 3232 3263 3294 3325 3356 3387 3418 3449 3480 3511 3542 3573 3604 3635 3666 3697 3728 3759 3790 3821 3852 3883 3914 3945 3976 4007 4038 4069 4100 4131 4162 4193 4224 4255 4286 4317 4348 4379 4410 4441 4472 4503 4534 4565 4596 4627 4658 4689 4720 4751 4782 4813 4844 4875 4906 4937 4968 4999 5030 5061 5092 5123 5154 5185 5216 5247 5278 5309 5340 5371 5402 5433 5464 5495 5526 5557 5588 5619 5650 5681 5712 5743 5774 5805 5836 5867 5898 5929 5960 5991 6022 6053 6084 6115 6146 6177 6208 6239 6270 6301 6332 6363 6394 6425 6456 6487 6518 6549 6580 6611 6642 6673 6704 6735 6766 6797 6828 6859 6890 6921 6952 6983 7014 7045 7076 7107 7138 7169 7200 7231 7262 7293 7324 7355 7386 7417 7448 7479 7510 7541 7572 7603 7634 7665 7696 7727 7758 7789 7820 7851 7882 7913 7944 7975 8006 8037 8068 8099 8130 8161 8192 8223 8254 8285 8316 8347 8378 8409 8440 8471 8502 8533 8564 8595 8626 8657 8688 8719 8750 8781 8812 8843 8874 8905 8936 8967 8998 9029 9060 9091 9122 9153 9184 9215 9246 9277 9308 9339 9370 9401 9432 9463 9494 9525 9556 9587 9618 9649 9680 9711 9742 9773 9804 9835 9866 9897 9928 9959 9990 10021 10052 10083 10114 10145 10176 10207 10238 10269 10300 10331 10362 10393 10424 10455 10486 10517 10548 10579 10610 10641 10672 10703 10734 10765 10796 10827 10858 10889 10920 10951 10982 11013 11044 11075 11106 11137 11168 11199 11230 11261 11292 11323 11354 11385 11416 11447 11478 11509 11540 11571 11602 11633 11664 11695 11726 11757 11788 11819 11850 11881 11912 11943 11974 12005 12036 12067 12098 12129 12160 12191 12222 12253 12284 12315 12346 12377 12408 12439 12470 12501 12532 12563 12594 12625 12656 12687 12718 12749 12780 12811 12842 12873 12904 12935 12966 12997 13028 13059 13090 13121 13152 13183 13214 13245 13276 13307 13338 13369 13400 13431 13462 13493 13524 13555 13586 13617 13648 13679 13710 13741 13772 13803 13834 13865 13896 13927 13958 13989 14020 14051 14082 14113 14144 14175 14206 14237 14268 14299 14330 14361 14392 14423 14454 14485 14516 14547 14578 14609 14640 14671 14702 14733 14764 14795 14826 14857 14888 14919 14950 14981 15012 15043 15074 15105 15136 15167 15198 15229 15260 15291 15322 15353 15384 15415 15446 15477 15508 15539 15570 15601 15632 15663 15694 15725 15756 15787 15818 15849 15880 15911 15942 15973 16004 16035 16066 16097 16128 16159 16190 16221 16252 16283 16314 16345 16376 16407 16438 16469 16500 16531 16562 16593 16624 16655 16686 16717 16748 16779 16810 16841 16872 16903 16934 16965 16996 17027 17058 17089 17120 17151 17182 17213 17244 17275 17306 17337 17368 17399 17430 17461 17492 17523 17554 17585 17616 17647 17678 17709 17740 17771 17802 17833 17864 17895 17926 17957 17988 18019 18050 18081 18112 18143 18174 18205 18236 18267 18298 18329 18360 18391 18422 18453 18484 18515 18546 18577 18608 18639 18670 18701 18732 18763 18794 18825 18856 18887 18918 18949 18980 19011 19042 19073 19104 19135 19166 19197 19228 19259 19290 19321 19352 19383 19414 19445 19476 19507 19538 19569 19600 19631 19662 19693 19724 19755 19786 19817 19848 19879 19910 19941 19972 20003 20034 20065 20096 20127 20158 20189 20220 20251 20282 20313 20344 20375 20406 20437 20468 20499 20530 20561 20592 20623 20654 20685 20716 20747 20778 20809 20840 20871 20902 20933 20964 20995 21026 21057 21088 21119 21150 21181 21212 21243 21274 21305 21336 21367 21398 21429 21460 21491 21522 21553 21584 21615 21646 21677 21708 21739 21770 21801 21832 21863 21894 21925 21956 21987 22018 22049 22080 22111 22142 22173 22204 22235 22266 22297 22328 22359 22390 22421 22452 22483 22514 22545 22576 22607 22638 22669 22700 22731 22762 22793 22824 22855 22886 22917 22948 22979 23010 23041 23072 23103 23134 23165 23196 23227 23258 23289 23320 23351 23382 23413 23444 23475 23506 23537 23568 23599 23630 23661 23692 23723 23754 23785 23816 23847 23878 23909 23940 23971 24002 24033 24064 24095 24126 24157 24188 24219 24250 24281 24312 24343 24374 24405 24436 24467 24498 24529 24560 24591 24622 24653 24684 24715 24746 24777 24808 24839 24870 24901 24932 24963 24994 25025 25056 25087 25118 25149 25180 25211 25242 25273 25304 25335 25366 25397 25428 25459 25490 25521 25552 25583 25614 25645 25676 25707 25738 25769 25800 25831 25862 25893 25924 25955 25986 26017 26048 26079 26110 26141 26172 26203 26234 26265 26296 26327 26358 26389 26420 26451 26482 26513 26544 26575 26606 26637 26668 26699 26730 26761 26792 26823 26854 26885 26916 26947 26978 27009 27040 27071 27102 27133 27164 27195 27226 27257 27288 27319 27350 27381 27412 27443 27474 27505 27536 27567 27598 27629 27660 27691 27722 27753 27784 27815 27846 27877 27908 27939 27970 28001 28032 28063 28094 28125 28156 28187 28218 28249 28280 28311 28342 28373 28404 28435 28466 28497 28528 28559 28590 28621 28652 28683 28714 28745 28776 28807 28838 28869 28900 28931 28962 28993 29024 29055 29086 29117 29148 29179 29210 29241 29272 29303 29334 29365 29396 29427 29458 29489 29520 29551 29582 29613 29644 29675 29706 29737 29768 29799 29830 29861 29892 29923 29954 29985 30016 30047 30078 30109 30140 30171 30202 30233 30264 30295 30326 30357 30388 30419 30450 30481 30512 30543 30574 30605 30636 30667 30698 30729 30760 30791 30822 30853 30884 30915 30946 30977 31008 31039 31070 31101 31132 31163 31194 31225 31256 31287 31318 31349 31380 31411 31442 31473 31504 31535 31566 31597 31628 31659 31690 31721 31752 31783 31814 31845 31876 31907 31938 31969 31999 32030 32061 32092 32123 32154 32185 32216 32247 32278 32309 32340 32371 32402 32433 32464 32495 32526 32557 32588 32619 32650 32681 32712 32743 32774 32805 32836 32867 32898 32929 32960 32991 33022 33053 33084 33115 33146 33177 33208 33239 33270 33301 33332 33363 33394 33425 33456 33487 33518 33549 33580 33611 33642 33673 33704 33735 33766 33797 33828 33859 33890 33921 33952 33983 34014 34045 34076 34107 34138 34169 34200 34231 34262 34293 34324 34355 34386 34417 34448 34479 34510 34541 34572 34603 34634 34665 34696 34727 34758 34789 34820 34851 34882 34913 34944 34975 35006 35037 35068 35099 35130 35161 35192 35223 35254 35285 35316 35347 35378 35409 35440 35471 35502 35533 35564 35595 35626 35657 35688 35719 35750 35781 35812 35843 35874 35905 35936 35967 35998 36029 36060 36091 36122 36153 36184 36215 36246 36277 36308 36339 36370 36401 36432 36463 36494 36525 36556 36587 36618 36649 36680 36711 36742 36773 36804 36835 36866 36897 36928 36959 36990 37021 37052 37083 37114 37145 37176 37207 37238 37269 37300 37331 37362 37393 37424 37455 37486 37517 37548 37579 37610 37641 37672 37703 37734 37765 37796 37827 37858 37889 37920 37951 37982 38013 38044 38075 38106 38137 38168 38199 38230 38261 38292 38323 38354 38385 38416 38447 38478 38509 38540 38571 38602 38633 38664 38695 38726 38757 38788 38819 38850 38881 38912 38943 38974 39005 39036 39067 39098 39129 39160 39191 39222 39253 39284 39315 39346 39377 39408 39439 39470 39501 39532 39563 39594 39625 39656 39687 39718 39749 39780 39811 39842 39873 39904 39935 39966 39997 40028 40059 40090 40121 40152 40183 40214 40245 40276 40307 40338 40369 40400 40431 40462 40493 40524 40555 40586 40617 40648 40679 40710 40741 40772 40803 40834 40865 40896 40927 40958 40989 41020 41051 41082 41113 41144 41175 41206 41237 41268 41299 41330 41361 41392 41423 41454 41485 41516 41547 41578 41609 41640 41671 41702 41733 41764 41795 41826 41857 41888 41919 41950 41981 42012 42043 42074 42105 42136 42167 42198 42229 42260 42291 42322 42353 42384 42415 42446 42477 42508 42539 42570 42601 42632 42663 42694 42725 42756 42787 42818 42849 42880 42911 42942 42973 43004 43035 43066 43097 43128 43159 43190 43221 43252 43283 43314 43345 43376 43407 43438 43469 43500 43531 43562 43593 43624 43655 43686 43717 43748 43779 43810 43841 43872 43903 43934 43965 43996 44027 44058 44089 44120 44151 44182 44213 44244 44275 44306 44337 44368 44399 44430 44461 44492 44523 44554 44585 44616 44647 44678 44709 44740 44771 44802 44833 44864 44895 44926 44957 44988 45019 45050 45081 45112 45143 45174 45205 45236 45267 45298 45329 45360 45391 45422 45453 45484 45515 45546 45577 45608 45639 45670 45701 45732 45763 45794 45825 45856 45887 45918 45949 45980 46011 46042 46073 46104 46135 46166 46197 46228 46259 46290 46321 46352 46383 46414 46445 46476 46507 46538 46569 46600 46631 46662 46693 46724 46755 46786 46817 46848 46879 46910 46941 46972 47003 47034 47065 47096 47127 47158 47189 47220 47251 47282 47313 47344 47375 47406 47437 47468 47499 47530 47561 47592 47623 47654 47685 47716 47747 47778 47809 47840 47871 47902 47933 47964 47995 48026 48057 48088 48119 48150 48181 48212 48243 48274 48305 48336 48367 48398 48429 48460 48491 48522 48553 48584 48615 48646 48677 48708 48739 48770 48801 48832 48863 48894 48925 48956 48987 49018 49049 49080 49111 49142 49173 49204 49235 49266 49297 49328 49359 49390 49421 49452 49483 49514 49545 49576 49607 49638 49669 49700 49731 49762 49793 49824 49855 49886 49917 49948 49979 50010 50041 50072 50103 50134 50165 50196 50227 50258 50289 50320 50351 50382 50413 50444 50475 50506 50537 50568 50599 50630 50661 50692 50723 50754 50785 50816 50847 50878 50909 50940 50971 51002 51033 51064 51095 51126 51157 51188 51219 51250 51281 51312 51343 51374 51405 51436 51467 51498 51529 51560 51591 51622 51653 51684 51715 51746 51777 51808 51839 51870 51901 51932 51963 51994 52025 52056 52087 52118 52149 52180 52211 52242 52273 52304 52335 52366 52397 52428 52459 52490 52521 52552 52583 52614 52645 52676 52707 52738 52769 52800 52831 52862 52893 52924 52955 52986 53017 53048 53079 53110 53141 53172 53203 53234 53265 53296 53327 53358 53389 53420 53451 53482 53513 53544 53575 53606 53637 53668 53699 53730 53761 53792 53823 53854 53885 53916 53947 53978 54009 54040 54071 54102 54133 54164 54195 54226 54257 54288 54319 54350 54381 54412 54443 54474 54505 54536 54567 54598 54629 54660 54691 54722 54753 54784 54815 54846 54877 54908 54939 54970 55001 55032 55063 55094 55125 55156 55187 55218 55249 55280 55311 55342 55373 55404 55435 55466 55497 55528 55559 55590 55621 55652 55683 55714 55745 55776 55807 55838 55869 55900 55931 55962 55993 56024 56055 56086 56117 56148 56179 56210 56241 56272 56303 56334 56365 56396 56427 56458 56489 56520 56551 56582 56613 56644 56675 56706 56737 56768 56799 56830 56861 56892 56923 56954 56985 57016 57047 57078 57109 57140 57171 57202 57233 57264 57295 57326 57357 57388 57419 57450 57481 57512 57543 57574 57605 57636 57667 57698 57729 57760 57791 57822 57853 57884 57915 57946 57977 58008 58039 58070 58101 58132 58163 58194 58225 58256 58287 58318 58349 58380 58411 58442 58473 58504 58535 58566 58597 58628 58659 58690 58721 58752 58783 58814 58845 58876 58907 58938 58969 58999 59030 59061 59092 59123 59154 59185 59216 59247 59278 59309 59340 59371 59402 59433 59464 59495 59526 59557 59588 59619 59650 59681 59712 59743 59774 59805 59836 59867 59898 59929 59960 59991 60022 60053 60084 60115 60146 60177 60208 60239 60270 60301 60332 60363 60394 60425 60456 60487 60518 60549 60580 60611 60642 60673 60704 60735 60766 60797 60828 60859 60890 60921 60952 60983 61014 61045 61076 61107 61138 61169 61200 61231 61262 61293 61324 61355 61386 61417 61448 61479 61510 61541 61572 61603 61634 61665 61696 61727 61758 61789 61820 61851 61882 61913 61944 61975 62006 62037 62068 62099 62130 62161 62192 62223 62254 62285 62316 62347 62378 62409 62440 62471 62502 62533 62564 62595 62626 62657 62688 62719 62750 62781 62812 62843 62874 62905 62936 62967 62998 63029 63060 63091 63122 63153 63184 63215 63246 63277 63308 63339 63370 63401 63432 63463 63494 63525 63556 63587 63618 63649 63680 63711 63742 63773 63804 63835 63866 63897 63928 63959 63990 64021 64052 64083 64114 64145 64176 64207 64238 64269 64300 64331 64362 64393 64424 64455 64486 64517 64548 64579 64610 64641 64672 64703 64734 64765 64796 64827 64858 64889 64920 64951 64982 65013 65044 65075 65106 65137 65168 65199 65230 65261 65292 65323 65354 65385 65416 65447 65478 65509 65540 65571 65602 65633 65664 65695 65726 65757 65788 65819 65850 65881 65912 65943 65974 66005 66036 66067 66098 66129 66160 66191																	

## Operating Instructions



Read the **ENTIRE IMPORTANT SAFETY INFORMATION** section at the beginning of this manual including all text under subheadings therein before set up or use of this product.

## Function

The Auto-Darkening Welding Helmet is designed to protect the eyes and face from sparks, splatter, and harmful radiation under normal welding conditions. The Auto-Darkening Filter automatically changes from a clear state to a dark state when an arc is struck, and it returns to the clear state when welding stops.

## Before Welding

The Auto-Darkening Welding Helmet comes ready for use. Prior to first use, remove the protective film from both sides of the lens (if not already done), adjust the position of the headband, select the correct shade number for the welding application, and test the helmet for proper operation as described below.

Check the Front Lens Cover to make sure that it is clean, and that no dirt is covering the two sensors on the front of the Filter Cartridge. Also check the Inside Lens Cover and the Lens Retaining Frame, and make sure that they are secured in place.

Inspect all operating parts before each use for signs of wear or damage. Any scratched, cracked, or pitted parts should be replaced immediately before using again to avoid severe personal injury.

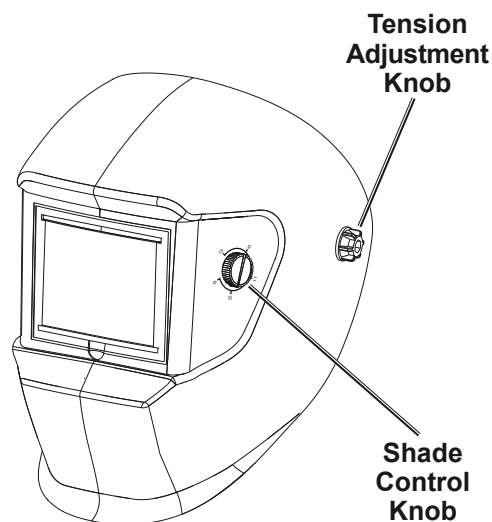


Figure A

## Shade Number Selection

1. Select the shade number required (see Shade Guide Chart on the previous page) by turning the Shade Control Knob. Be sure that the shade number of the Welding Helmet is the correct shade number for your application.

**Note:** If a selection of shades are recommended for your application, try the darkest setting first.

2. The shade number can be set from 9 to 13 by turning the Shade Control Knob until the indicator points to the desired shade number. See Figure B.
3. Remember to check with the Shade Guide Chart on the previous page to determine the proper shade number for your application.

**Important:** Test the helmet auto-darkening filter lens before welding. While wearing the helmet, briefly strike an arc, keeping your face and eyes turned slightly away, and to one side. The lens should darken evenly when not directly facing the arc. If it does not darken properly, do not use the Welding Helmet.

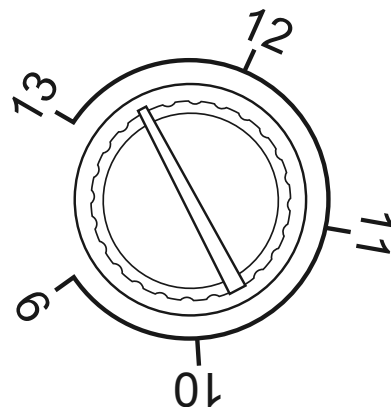


Figure B

## Adjusting Headband

Adjust the Headband so that the helmet is seated securely on your head as low as possible and close to your face.

Adjust the Headband width by turning the Headband Adjustment Knob to make sure the Front Lens Cover is aligned with your eyes.

Adjust the Headband height by tightening or loosening the top strap until the Helmet fits snug on your head. Once the Headband is properly adjusted, lower the Helmet over your face until the proper angle is found. Then turn the Tension Adjustment Knobs on either side of the helmet, locking the helmet's angle in place.

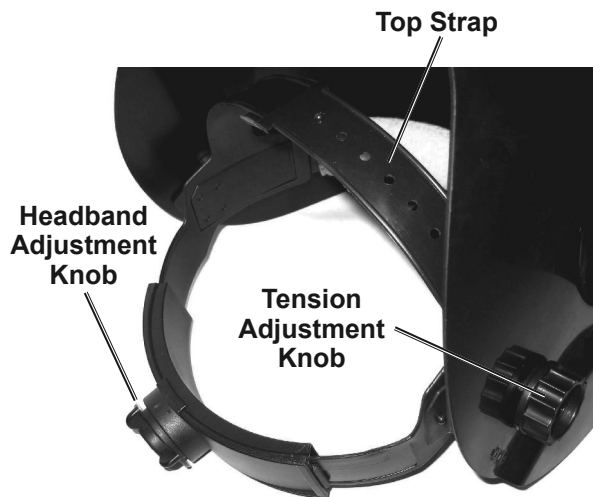


Figure C

## Time Delay and Sensitivity

At the moment the welding operation is started, the filter screen automatically changes from clear to dark.

The operator can vary the amount of time it takes the filter to return to a clear state and the sensitivity of the sensor using the controls inside the helmet.

The Sensitivity setting changes the amount of light needed to make the filter react.

### Dark to Clear Adjustment Knob

Adjusts the speed the lens changes.

Minimum: 0.1 seconds

Maximum: 0.9 seconds



### Sensitivity Adjustment Knob

Adjusts the amount of light needed to activate the lens to darken.

Figure D

## Solar Cells

This Welding Helmet utilizes high performance solar cells as its power supply, and has a built-in 3V lithium battery as power backup. No change of battery is needed. Under normal welding conditions, users can expect a battery lifetime of more than 6 years.

## Shades

User-selectable variable shades from 9 to 13 are adjusted with the Shade Control Knob (shade variable). This product is in full conformity with related DIN, ISO, EN379 safety standards and ANSI Z87.1-2015 standard.

## Filters

The ultra high performance of UV and IR Auto-Darkening filters provides the user's eyes and face with full protection against UV and IR radiation during the entire welding process, even in clear state. The UV/IR protection level is up to shade 15 at all times.

## Magnifying Cheater Lens

To attach a magnifying cheater lens (sold separately) to the inside of the helmet, slide the cheater lens into place underneath the tabs located on the lower right and left sides of the Lens Retaining Frame.

## Common Problems and Remedies

---

SAFETY

SPECIFICATIONS

OPERATION

MAINTENANCE

1. **Irregular Darkening Or Dimming**
  - a. Headband has been set unevenly on both sides of helmet (unequal distances from the eyes to filter's lens).
  - b. Reset Headband to reduce difference in distances to filter, if necessary.
2. **Auto-Darkening Filter Does Not Darken Or Flickers**
  - a. Front Lens Cover is soiled or damaged (change the cover).
  - b. Sensors are soiled (clean surface of the sensors).
  - c. Welding current is too low (turn Sensitivity Adjustment Knob to the "MAX" position, if necessary).
3. **Slow Response**
  - a. Operating temperature is too low (do not use at temperatures below 14° F).
4. **Poor Vision**
  - a. Front/Inside Lens Cover and/or Filter soiled (change it).
  - b. Insufficient ambient light.
  - c. Shade number is incorrectly set (reset shade number).
5. **Welding Helmet Slips**
  - a. Headband is not adjusted properly (must be lowered).

**Stop using the Helmet immediately if any of the mentioned problems cannot be corrected.**





## Maintenance and Servicing



Procedures not specifically explained in this manual must be performed only by a qualified technician.

### !WARNING

**TO PREVENT SERIOUS INJURY FROM TOOL FAILURE:**  
Do not use damaged equipment. If abnormal noise or vibration occurs, have the problem corrected before further use.

## Lens and Helmet Maintenance

Replace the Front Lens Cover if it is damaged (cracked, scratched, soiled or pitted).

### 1. To Replace the Cover:

- Remove the Front Lens Cover by gently pulling up the central part of the Lens. See Figure E. If the unit has a frame over the front of the lens, lift up on the tab at the bottom of the frame to access the lens cover.
- Remove the protection film from both sides of the new Lens if it comes with a film covering. Place the new Lens into place by bending it slightly and sliding it between the tabs at each side of the lens until it snaps into place.
- Make sure that the Lens is securely installed. If the unit has a frame, make sure that the frame is snapped securely into place.

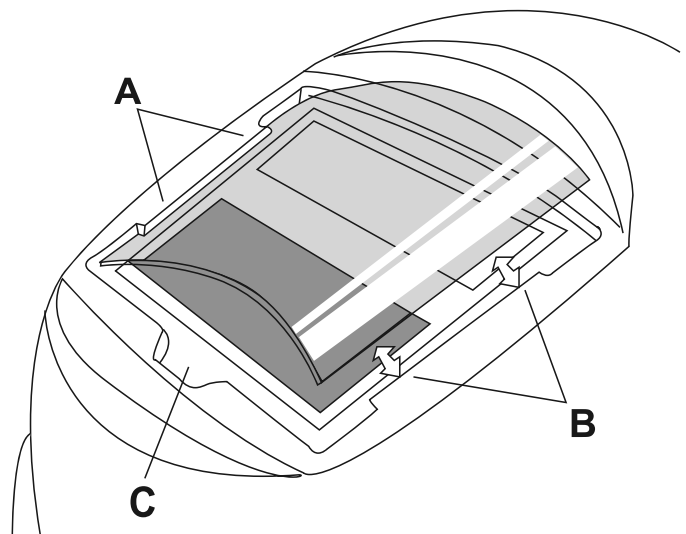


Figure E

- Clean the Filter Lens** with a clean lint-free tissue or cotton cloth.
- Do not immerse** the lens in water or any other liquid. Do not use abrasives, solvents or oil based cleaners.
- Do not remove** the Auto-Darkening Filter from the Auto-Darkening Welding Helmet. Do not try to open the Filter.
- Storage temperature:** -4° to 158° F.

**PLEASE READ THE FOLLOWING CAREFULLY**

THE MANUFACTURER AND/OR DISTRIBUTOR HAS PROVIDED THE PARTS DIAGRAM IN THIS MANUAL AS A REFERENCE TOOL ONLY. NEITHER THE MANUFACTURER NOR DISTRIBUTOR MAKES ANY REPRESENTATION OR WARRANTY OF ANY KIND TO THE BUYER THAT HE OR SHE IS QUALIFIED TO MAKE ANY REPAIRS TO THE PRODUCT OR THAT HE OR SHE IS QUALIFIED TO REPLACE ANY PARTS OF THE PRODUCT. IN FACT, THE MANUFACTURER AND/OR DISTRIBUTOR EXPRESSLY STATES THAT ALL REPAIRS AND PARTS REPLACEMENTS SHOULD BE UNDERTAKEN BY CERTIFIED AND LICENSED TECHNICIANS AND NOT BY THE BUYER. THE BUYER ASSUMES ALL RISK AND LIABILITY ARISING OUT OF HIS OR HER REPAIRS TO THE ORIGINAL PRODUCT OR REPLACEMENT PARTS THERETO, OR ARISING OUT OF HIS OR HER INSTALLATION OF REPLACEMENT PARTS THERETO.

**Parts List**

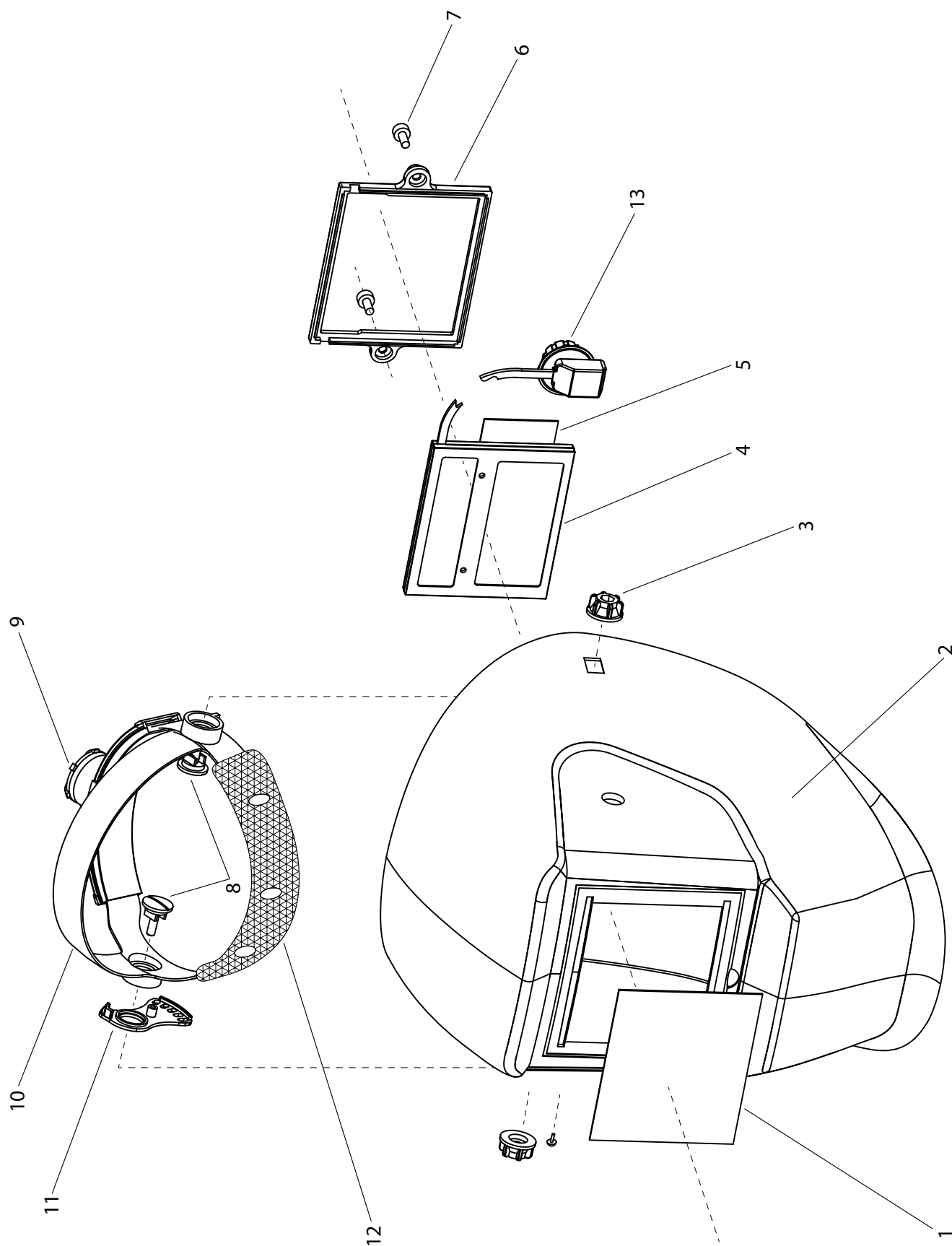
Part	Description	Qty
1	Front Lens Cover	1
2	Shell (Welding Mask)	1
3	Tension Adjustment Knob	2
4	Auto-Darkening Filter	1
5	Inside Lens Cover	1
6	Lens Retaining Frame	1
7	Lens Retaining Frame Screw	2

Part	Description	Qty
8	Headgear Screw	2
9	Headband Adjustment Knob	1
10	Ratcheting Headband	1
11	Positioning Plate	1
12	Sweatband	1
13	Shade Control Knob	1

**Record Product's Serial Number Here:** \_\_\_\_\_

**Note:** If product has no serial number, record month and year of purchase instead.

**Note:** Some parts are listed and shown for illustration purposes only, and are not available individually as replacement parts. Specify UPC 193175326584 when ordering parts.



## Limited 90 Day Warranty

Harbor Freight Tools Co. makes every effort to assure that its products meet high quality and durability standards, and warrants to the original purchaser that this product is free from defects in materials and workmanship for the period of 90 days from the date of purchase. This warranty does not apply to damage due directly or indirectly, to misuse, abuse, negligence or accidents, repairs or alterations outside our facilities, criminal activity, improper installation, normal wear and tear, or to lack of maintenance. We shall in no event be liable for death, injuries to persons or property, or for incidental, contingent, special or consequential damages arising from the use of our product. Some states do not allow the exclusion or limitation of incidental or consequential damages, so the above limitation of exclusion may not apply to you. THIS WARRANTY IS EXPRESSLY IN LIEU OF ALL OTHER WARRANTIES, EXPRESS OR IMPLIED, INCLUDING THE WARRANTIES OF MERCHANTABILITY AND FITNESS.

To take advantage of this warranty, the product or part must be returned to us with transportation charges prepaid. Proof of purchase date and an explanation of the complaint must accompany the merchandise. If our inspection verifies the defect, we will either repair or replace the product at our election or we may elect to refund the purchase price if we cannot readily and quickly provide you with a replacement. We will return repaired products at our expense, but if we determine there is no defect, or that the defect resulted from causes not within the scope of our warranty, then you must bear the cost of returning the product.

This warranty gives you specific legal rights and you may also have other rights which vary from state to state.

