

Owner's Manual & Safety Instructions

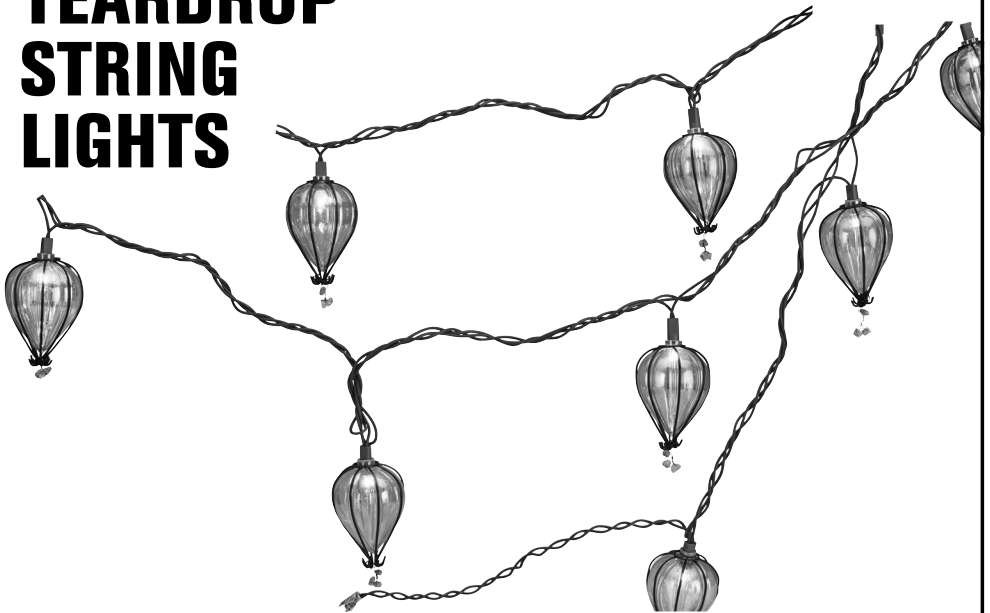
Save This Manual Keep this manual for the safety warnings and precautions, assembly, operating, inspection, maintenance and cleaning procedures. Write the product's serial number in the back of the manual (or month and year of purchase if product has no number). Keep this manual and the receipt in a safe and dry place for future reference.

19e

luminar **OUTDOOR™**

56267

10 BULB MULTICOLOR TEARDROP STRING LIGHTS



Visit our website at: <http://www.harborfreight.com>
Email our technical support at: productsupport@harborfreight.com

When unpacking, make sure that the product is intact and undamaged. If any parts are missing or broken, please call 1-888-866-5797 as soon as possible.

Copyright© 2019 by Harbor Freight Tools®. All rights reserved.
No portion of this manual or any artwork contained herein may be reproduced in any shape or form without the express written consent of Harbor Freight Tools. Diagrams within this manual may not be drawn proportionally. Due to continuing improvements, actual product may differ slightly from the product described herein.
Tools required for assembly and service may not be included.

⚠WARNING

Read this material before using this product.
Failure to do so can result in serious injury.
SAVE THIS MANUAL.

IMPORTANT SAFETY INSTRUCTIONS

When using electrical products, basic precautions should always be followed including the following:

READ AND FOLLOW ALL SAFETY INSTRUCTIONS.

1. Do not use seasonal products outdoors unless marked suitable for indoor and outdoor use. When products are used in outdoor applications, connect the product to a Ground Fault Circuit Interrupting (GFCI) outlet. If one is not provided, contact a qualified electrician for proper installation.
2. This seasonal use product is not intended for permanent installation or use.
3. Do not mount or place near gas or electric heaters, fireplaces, candles or other similar sources of heat.
4. Do not secure the wiring of the product with staples or nails, or place on sharp hooks or nails.
5. Do not let lamps rest on the supply cord or on any wire.
6. Unplug the product when leaving the house, when retiring for the night, or if left unattended.
7. This is an electric product—not a toy! To avoid risk of fire, burns, personal injury and electric shock it should not be played with or placed where small children can reach it.
8. Do not use this product for other than its intended use.
9. Do not hang ornaments or other objects from cord, wire, or light string.
10. Do not close doors or windows on the product or extension cords as this may damage the wire insulation.
11. Do not cover the product with cloth, paper or any material not part of the product when in use.
12. This product is equipped with push-in type lamps. Do not twist lamps.
13. This product employs overload protection (fuse). A blown fuse indicates an overload or short-circuit situation. If the fuse blows, unplug the product from the outlet. Also unplug any additional strings or products that may be attached to the product. Replace the fuse as per the user servicing instructions (follow product marking for the proper fuse rating) and check the product. If the replacement fuse blows, a short-circuit may be present and the product should be discarded.
14. Read and follow all instructions that are on the product or provided with the product.

CAUTION

1. To reduce the risk of electric shock, use only with the power-supply cord provided or with a cord set intended for outdoor use.
2. Do not use a cracked, frayed, or damaged cord. Inspect the cord periodically.
3. Do not abuse cord. Do not carry product by the cord or yank or pull it to disconnect from the outlet.

4. Disconnect the product from the outlet when not in use.
5. This seasonal product is not intended for permanent installation. To reduce the likelihood of excessive heat and possible damage, use only decorative lamp accessories packaged with this product. Always unplug this product before installing or replacing fuses.
6. To reduce the risk of fire and electric shock:
 - a. Do not install on trees having needles, leaves or branch coverings of metal or materials which look like metal.
 - b. Do not mount or support strings in a manner that can cut or damage wire insulation.
7. Risk of fire. This product does not contain lamp shunts in order to allow the product to operate if one lamp burns out. Do not replace lamps with other than the spare lamps provided with this product.
8. Do not operate with bulbs missing from sockets, missing bulbs should be replaced promptly.



SAVE THESE INSTRUCTIONS

Use and Care Instructions

1. When the product is placed on a live tree, the tree should be well maintained and fresh. Do not place on live trees in which the needles are brown or break off easily. Keep the tree holder filled with water.
2. If the product is placed on a tree, the tree should be well secured and stable.
3. Before using or reusing, inspect product carefully. Discard any products that have cut, damaged, or frayed wire insulation or cords, cracks in the lampholders or enclosures, loose connections, or exposed copper wire.
4. When storing the product, carefully remove the product from wherever it is placed, including trees, branches, or bushes, to avoid any undue strain or stress on the product conductors, connections, and wires.
5. When not in use, store neatly in a cool, dry location protected from sunlight.

User Servicing Instructions



Read the **ENTIRE IMPORTANT SAFETY INSTRUCTIONS** section at the beginning of this document including all text under subheadings therein before set up or use of this product.

Lamp Replacement

WARNING! REPLACE LAMPS ONLY WITH 12 VOLT, 0.96 WATT SPARE LAMPS PROVIDED WITH THIS PRODUCT. LIGHTING STRING IS RATED 9.6W (0.08A)—DO NOT OVERLOAD. CONNECT OTHER LIGHTING STRINGS OR DECORATIVE OUTFITS END-TO-END UP TO A MAXIMUM OF 216W (1.8A) TOTAL. DO NOT TEST LIGHT SET WHILE IN PACKAGING. THIS MAY BUILD UP EXCESS HEAT WHICH CAN CAUSE A MELTDOWN OF THE PACKAGING MATERIAL AND CAUSE A FIRE.

1. Grasp plug and remove from the receptacle or other outlet device. Do not unplug by pulling on cord.
2. Remove the lampholder from the decorative cover by pulling it out of the cover.
3. Pull bulb and lamp base straight out of lampholder.
4. Replace lamp with only 12 volt, 0.96 watt, regular brightness lamp (provided with product).
5. Insert the lampholder back into the decorative cover.

CAUTION! To reduce the risk of overheating replace burned out lamps promptly. Figure A below illustrates how to exchange the lamp base on the new lamp with the old one if the new lamp base does not fit.

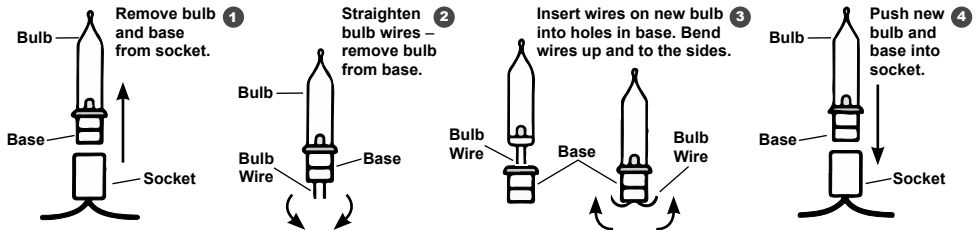


Figure A: Replacing Bulb in Lamp Base

luminar **OUTDOOR™**

Fuse Replacement

1. Grasp plug and remove from the receptacle or other outlet device. Do not unplug by pulling on cord.
 2. Open fuse cover. Slide open fuse access cover on top of attachment plug towards blades.
 3. Remove fuse carefully. Turn fuseholder over to remove fuse.
 4. Risk of fire. Replace fuse only with 3A, 125V fuse (provided with product).
 5. Close fuse cover. Slide closed the fuse access cover on top of attachment plug.
- Caution:** Risk of fire. Do not replace attachment plug. Contains a safety device (fuse) that should not be removed. Discard product if the attachment plug is damaged.

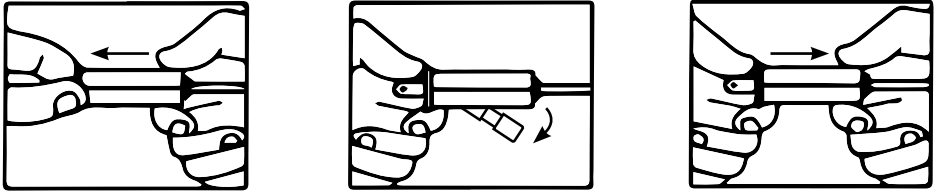


Figure B: Safety Plug with Replaceable Fuse

Specifications

Electrical Rating	120V, 60Hz, 0.08A, 9.6W
Light Type	12V, 0.96W Push-In Lamp

luminar **OUTDOOR**[™]

PLEASE READ THE FOLLOWING CAREFULLY

THE MANUFACTURER AND/OR DISTRIBUTOR HAS PROVIDED THE PARTS LIST AND INSTALLATION DIAGRAM IN THIS DOCUMENT AS A REFERENCE TOOL ONLY. NEITHER THE MANUFACTURER OR DISTRIBUTOR MAKES ANY REPRESENTATION OR WARRANTY OF ANY KIND TO THE BUYER THAT HE OR SHE IS QUALIFIED TO MAKE ANY REPAIRS TO THE PRODUCT, OR THAT HE OR SHE IS QUALIFIED TO REPLACE ANY PARTS OF THE PRODUCT. IN FACT, THE MANUFACTURER AND/OR DISTRIBUTOR EXPRESSLY STATES THAT ALL REPAIRS AND PARTS REPLACEMENTS SHOULD BE UNDERTAKEN BY CERTIFIED AND LICENSED TECHNICIANS, AND NOT BY THE BUYER. THE BUYER ASSUMES ALL RISK AND LIABILITY ARISING OUT OF HIS OR HER REPAIRS TO THE ORIGINAL PRODUCT OR REPLACEMENT PARTS THERETO, OR ARISING OUT OF HIS OR HER INSTALLATION OF REPLACEMENT PARTS THERETO.

Record Serial Number Here: _____

Note: If product has no serial number, record month and year of purchase instead.

Parts List

Part	Description	Qty.
1	Light String	1
2	Spare Bulb	2
3	Spare Fuse	2

Note: Some parts are listed and shown for illustration purposes only, and are not available individually as replacement parts.

Limited 90 Day Warranty

Harbor Freight Tools Co. makes every effort to assure that its products meet high quality and durability standards, and warrants to the original purchaser that this product is free from defects in materials and workmanship for the period of 90 days from the date of purchase. This warranty does not apply to damage due directly or indirectly, to misuse, abuse, negligence or accidents, repairs or alterations outside our facilities, criminal activity, improper installation, normal wear and tear, or to lack of maintenance. We shall in no event be liable for death, injuries to persons or property, or for incidental, contingent, special or consequential damages arising from the use of our product. Some states do not allow the exclusion or limitation of incidental or consequential damages, so the above limitation of exclusion may not apply to you. THIS WARRANTY IS EXPRESSLY IN LIEU OF ALL OTHER WARRANTIES, EXPRESS OR IMPLIED, INCLUDING THE WARRANTIES OF MERCHANTABILITY AND FITNESS.

To take advantage of this warranty, the product or part must be returned to us with transportation charges prepaid. Proof of purchase date and an explanation of the complaint must accompany the merchandise. If our inspection verifies the defect, we will either repair or replace the product at our election or we may elect to refund the purchase price if we cannot readily and quickly provide you with a replacement. We will return repaired products at our expense, but if we determine there is no defect, or that the defect resulted from causes not within the scope of our warranty, then you must bear the cost of returning the product.

This warranty gives you specific legal rights and you may also have other rights which vary from state to state.

luminar **OUTDOOR**[™]

26541 Agoura Road • Calabasas, CA 91302 • 1-888-866-5797