

# Owner's Manual & Safety Instructions

Save This Manual Keep this manual for the safety warnings and precautions, assembly, operating, inspection, maintenance and cleaning procedures. Write the product's serial number in the back of the manual near the assembly diagram (or month and year of purchase if product has no number). Keep this manual and the receipt in a safe and dry place for future reference.

20e

# BADLAND®

## 80 FT. X 3/8" SYNTHETIC WINCH ROPE



Visit our website at: <http://www.harborfreight.com>  
Email our technical support at: [productsupport@harborfreight.com](mailto:productsupport@harborfreight.com)

56412

When unpacking, make sure that the product is intact and undamaged. If any parts are missing or broken, please call 1-888-866-5797 as soon as possible.

Copyright© 2019 by Harbor Freight Tools®. All rights reserved.

No portion of this manual or any artwork contained herein may be reproduced in any shape or form without the express written consent of Harbor Freight Tools. Diagrams within this manual may not be drawn proportionally. Due to continuing improvements, actual product may differ slightly from the product described herein. Tools required for assembly and service may not be included.

### **⚠WARNING**

Read this material before using this product. Failure to do so can result in serious injury. SAVE THIS MANUAL.

# Specifications

Working Load Limit	12,000 lb
Breaking Strength	16,800 lb
Size	80 ft. x 3/8"

# Important Safety Information

## Installation Precautions

1. Install only according to winch instructions. Improper installation can create hazards. Spool rope in respooling direction only. Make sure rope enters and exits winch at the bottom of the drum.
2. Wear ANSI-approved safety goggles and heavy-duty work gloves during installation, setup, and use.
3. Keep installation area clean and well lit.
4. Keep bystanders out of the area during installation.
5. Do not install when tired or when under the influence of alcohol, drugs or medication.
6. Weight capacity and other product capabilities apply to properly and completely installed product only.
7. Anchor at both ends using proper methods to prevent abrasion and uneven loading.
8. Only use proper techniques to splice or create loop. Imperfect splices and loops will greatly reduce rope capacity.
9. Only use with aluminum hawse fairlead free of nicks and burrs.
10. If winch includes a tensioner, remove it before installing this synthetic rope.

## Use Precautions

1. Do not exceed 12,000 lb. Working Load Limit. **Be aware of dynamic loading!** Suddenly starting or jerking against load may briefly create excess load causing product failure.
2. Inspect before every use; do not use rope if damaged, faded, frayed, or partially cut.
3. Lay a dampening blanket or winch damper over the rope before winching to prevent whiplash.
4. Keep away from sharp edges and from high heat, such as exhaust components.
5. Keep at least 10 full wraps of rope around the drum when winching. Synthetic rope requires more wraps than wire rope. Rope attachment cannot support load.
6. Do not wrap rope around anchor point. Use a strap.
7. This product is not a toy. Do not allow children to play with this item or nearby during use.
8. Do not allow rope to slip through your hands.
9. Use as intended only.

## Maintenance Precautions

---

1. Disconnect power to winch and allow it to cool completely before service.
2. Wash used portion of rope carefully after use.
3. Store out of sunlight. Cover winch to prevent premature weathering.

## Installation Instructions



Read the **ENTIRE IMPORTANT SAFETY INFORMATION** section at the beginning of this document including all text under subheadings therein before set up or use of this product.

### **!WARNING**

**TO PREVENT SERIOUS INJURY FROM ACCIDENTAL OPERATION:**  
Disconnect power to winch before performing any procedure in this section.

## Winch Tensioner Removal

---

If winch includes a tensioner, remove it before installing this synthetic rope. A rope tensioner is not recommended for use with synthetic rope.

1. Remove existing steel rope from winch.
2. Use locking pliers to remove the tension springs from each side of the winch.
3. Remove the control box from the tie bars and set aside. Electrical connections can be left attached.
4. Remove the front screws securing the front tie rod and remove the tensioner assembly from the tie rod.
5. Reinstall the front tie rod.
6. Remove the rear screws securing the rear tie rod and remove the spring anchors from the tie rod.
7. Reinstall the rear tie rod.
8. Reinstall the control box to the tie bars.

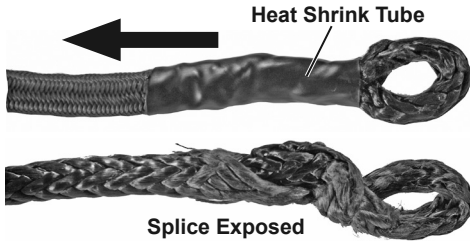
## Installing Synthetic Rope to Drum Flange

---

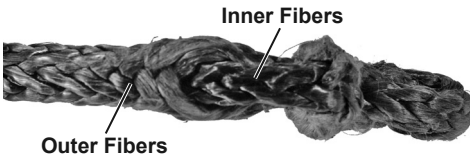
1. Remove set screw and old rope from winch, and smooth out any burrs and sharp edges from winch drum, set screw end, and fairlead using sandpaper.
2. Re-use rope mounting hardware to secure the Synthetic Rope to the drum flange.
3. Install the retainer and set screw into the drum but do not tighten. The Rope must be able to freely rotate around the retainer.
4. With the winch in freespool, rotate the drum to bring the rope anchor under the drum tube and over the top.
5. The main Rope should now be winding under the drum, and the anchor should be accessible.
6. Ensure the Synthetic Rope is routed smoothly onto the drum tube and tighten the set screw.
7. Proceed to *Preparing the Synthetic Rope* on page 6.

# Installing Synthetic Rope Through Drum Hole

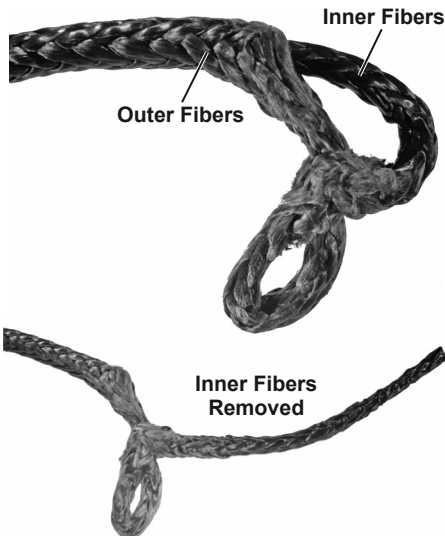
1. Slide heat shrink tube toward the red heat sleeve to expose the full splice. Remove 1 inch of heat shrink tube from loop side of Rope if necessary to facilitate movement.



2. Loosen splice to identify Inner and Outer rope fibers at the base of the splice.



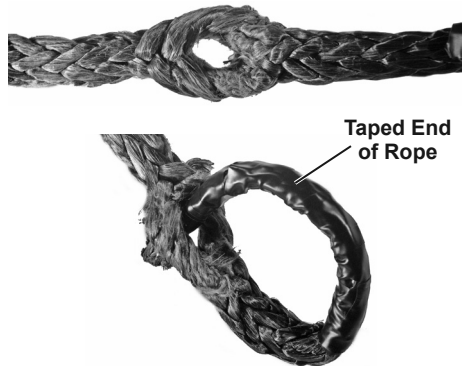
3. Pull the Inner fibers out where they enter the center of the Outer fibers and fully remove them.



4. Wrap the end of the Rope with tape to stabilize the fibers.



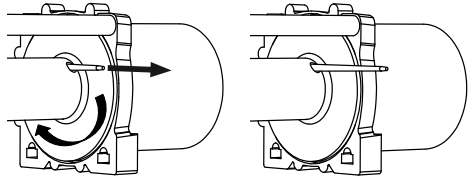
5. Undo the original loop until a single opening is left in the Rope. Orient the opening as shown and pass the taped end of the Rope through the hole to close it.



- Slide the heat shrink tube back towards the end of the Rope. It may be helpful to work the last 2–3 feet of the heat sleeve to gain more movement. Use a heat gun on low to reattach the heat shrink tube to the Rope.

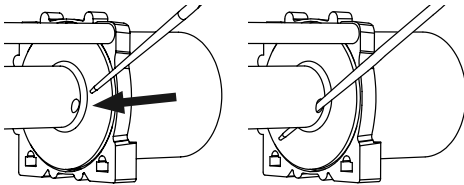


- Rotate drum to bring the Rope under the drum and the tip to the top of the drum. Pull the tip and rope end through the drum hole as far as possible.

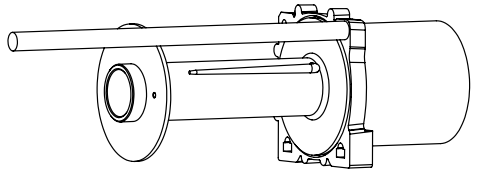


- Remove set screw and old rope from winch, and smooth out any burrs and sharp edges from winch drum, set screw end, and fairlead using sandpaper.

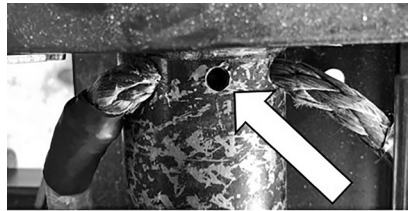
- Insert the new Rope into the hole on the drum. Ensure Rope is inserted from the front with the drum hole on the bottom half of the drum.



- Place the tail along the drum as shown and tape into position using heavy duty tape. Normal winding of the Rope will keep it in place.



- Reinstall original set screw into drum and tighten securely. The top of the set screw must not extend above the drum surface.



- Proceed to *Preparing the Synthetic Rope* on page 6.

## Preparing the Synthetic Rope

---

The Synthetic Rope must be properly coiled under tension to be able to support a load without damage.

1. Find a suitable location where the Rope can be spooled onto the Winch while anchored to a solid object. Approximately 70 feet will be required. Alternately, a snatch block (sold separately) may be used to reduce the distance to 35 feet.
2. Move the clutch handle or knob to the Freespool position and uncoil the Synthetic Rope until 5 wraps remain on the drum. Move the clutch handle or knob back to the Engaged position.
3. Turn on vehicle's engine, then slowly and carefully move the vehicle in reverse to remove slack from the line.

**WARNING! To prevent serious injury and death from carbon monoxide poisoning, area must be well-ventilated before starting an engine.**

4. Place the vehicle in neutral. Spool the Synthetic Rope back into the winch while gently applying the brakes. If the ground is flat, shallow mud or dirt, the brakes can be fully applied. Pavement can generate much higher loads, in which case only light braking is needed.
5. Use a second person to monitor the rope spooling evenly onto the drum.

**WARNING! TO PREVENT SERIOUS INJURY:** Keep fingers clear to prevent entanglement.

6. The last layer of Rope can be put on without tension.

## Limited 90 Day Warranty

Harbor Freight Tools Co. makes every effort to assure that its products meet high quality and durability standards, and warrants to the original purchaser that this product is free from defects in materials and workmanship for the period of 90 days from the date of purchase. This warranty does not apply to damage due directly or indirectly, to misuse, abuse, negligence or accidents, repairs or alterations outside our facilities, criminal activity, improper installation, normal wear and tear, or to lack of maintenance. We shall in no event be liable for death, injuries to persons or property, or for incidental, contingent, special or consequential damages arising from the use of our product. Some states do not allow the exclusion or limitation of incidental or consequential damages, so the above limitation of exclusion may not apply to you. THIS WARRANTY IS EXPRESSLY IN LIEU OF ALL OTHER WARRANTIES, EXPRESS OR IMPLIED, INCLUDING THE WARRANTIES OF MERCHANTABILITY AND FITNESS.

To take advantage of this warranty, the product or part must be returned to us with transportation charges prepaid. Proof of purchase date and an explanation of the complaint must accompany the merchandise. If our inspection verifies the defect, we will either repair or replace the product at our election or we may elect to refund the purchase price if we cannot readily and quickly provide you with a replacement. We will return repaired products at our expense, but if we determine there is no defect, or that the defect resulted from causes not within the scope of our warranty, then you must bear the cost of returning the product.

This warranty gives you specific legal rights and you may also have other rights which vary from state to state.

**BADLAND®**

26541 Agoura Road • Calabasas, CA 91302 • 1-888-866-5797