

Owner's Manual & Safety Instructions

Save This Manual Keep this manual for the safety warnings and precautions, assembly, operating, inspection, maintenance and cleaning procedures. Write the product's serial number in the back of the manual near the assembly diagram (or month and year of purchase if product has no number). Keep this manual and the receipt in a safe and dry place for future reference.

19g



1/20 HP NON-SUBMERSIBLE CONDENSATE REMOVAL PUMP



**Do not return
Pump to the store.
Call 1-844-416-9141**

56467

Visit our website at: <http://www.harborfreight.com>
Email our technical support at: productsupport@harborfreight.com

When unpacking, make sure that the product is intact and undamaged. If any parts are missing or broken, please call 1-888-866-5797 as soon as possible.

⚠ WARNING

Read this material before using this product. Failure to do so can result in serious injury. **SAVE THIS MANUAL.**

Copyright © 2019 by Harbor Freight Tools®. All rights reserved.
No portion of this manual or any artwork contained herein may be reproduced in any shape or form without the express written consent of Harbor Freight Tools. Diagrams within this manual may not be drawn proportionally. Due to continuing improvements, actual product may differ slightly from the product described herein. Tools required for assembly and service may not be included.

Before start-up, note the following:



The Pump must be connected to a GFCI protected plug which has been installed according to regulations. The plug must have a supply voltage of 120 VAC at 60 Hz.

CAUTION

This Pump has been evaluated for use with water only.

⚠WARNING

IMPORTANT! For your own safety – before starting to run the Pump, please have the following items checked by an expert:

1. Risk of electric shock – This Pump is supplied with a grounding conductor and grounding-type attachment plug. To reduce the risk of electric shock, be certain that it is connected only to a properly grounded, grounding-type receptacle.
2. Risk of electric shock – This Pump has not been investigated for use in swimming pool areas.
3. The electrical connections must be protected from moisture.
4. If there is danger of flooding, the electrical connections must be taken to higher ground.
5. Circulation of caustic fluids, as well as the circulation of abrasive materials, must be avoided at all costs.
6. The Pump must be protected from frost.
7. The Pump must be protected from running dry.
8. Access by children should also be prevented with appropriate measures.
9.  **To prevent death from electric shock, Pump must be connected only to a GFCI protected outlet.**
10.  **Do not Pump flammable materials. Motor brushes may spark and cause explosions.**
11. Do not use an extension cord with this item.
12. People with pacemakers should consult their physician(s) before use. Electromagnetic fields in close proximity to heart pacemaker could cause pacemaker interference or pacemaker failure.
13. The warnings, precautions, and instructions discussed in this instruction manual cannot cover all possible conditions and situations that may occur. It must be understood by the operator that common sense and caution are factors which cannot be built into this product, but must be supplied by the operator.

Fluid Type

The Pump is designed for use with water with a maximum temperature of 95° F (35°C). Do not use the Pump for other fluids, especially not fuels, cleaning fluids, or other chemical products.



Specifications

Electrical Rating	115VAC / 60Hz / 1.7A
Power Cord Length	6'
Maximum Flow @ 0'	132 GPH
Maximum Head lift @ 0 Flow	18'
Discharge Port	3/8" barbed

Installation

The Pump must be installed in a stationary position with flexible tube running to and from it.

Please note!

1. Do not install the Pump by suspending it unsupported from its delivery pipe or power cord. The Pump must be suspended from the mounting slots or placed on its feet.
2. To help ensure the Pump will start as required, check the Pump regularly with start-up tests.

Power Supply

1. The Pump is equipped with a shock-proof plug according to regulations. The Pump is designed to be connected to 120 VAC, 60 Hz GFCI protected socket.
2. Make sure that the socket is sufficiently secured and is in excellent condition.
3. When the plug is inserted into the socket, the Pump will be on standby.
4.  **WARNING: To prevent death from electric shock, Pump must be connected only to a GFCI protected outlet.**
WARNING! If the power cord or plug is damaged, do not use the Pump. The power cord or plug may only be repaired by a certified electrician.

Areas of use

1. This Pump is designed to pump water only.
2. This Pump is designed to be used for condensate drainage.
3. This Pump should NOT be used for:
Continuous run, fountain/pond water features.
Removing water from swimming pools or spas. Septic or sewage systems.

Installation Instructions

1. The Pump can be mounted to a wall or the side of an Air Conditioner enclosure using the two slots shown in Figure A. Make sure the tubes leading to and from the Pump are long enough and can follow as straight a path as possible. To ensure proper function, the Pump must be level and the inlet must be lower than the condensate drain.

WARNING! TO PREVENT SERIOUS INJURY AND DEATH FROM ELECTROCUTION OR EXPLOSION: Verify that installation surface has no hidden coolant lines or wiring before drilling or driving screws.

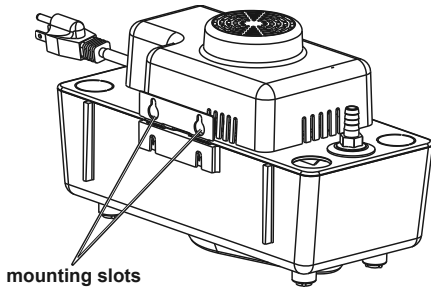


Figure A: Mounting Slots

2. Cut end of tube from condensate drain at an angle. Insert tube into basin. Secure it so that the end is 1–1.5" from the bottom of the basin.

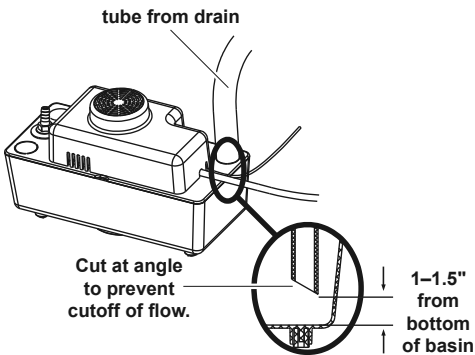


Figure B: Drain Tube Attachment

3. Use 3/8" inner diameter Discharge Tube for the discharge from the Condensate Pump. Slip the end of the tube over the end of the Check Valve. Secure it using Hose Clamp. Do not overtighten the Hose Clamp.

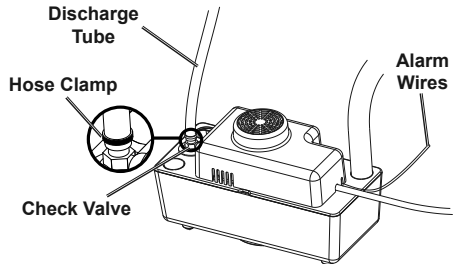


Figure C: Discharge Tube Attachment

4. Secure the loose end of the Discharge Tube in an acceptable drainage area.
5. The Alarm Wires can be used to activate an alarm, shut off the air conditioner, or activate another device if the water rises too high. Consult an electrician for advice on how to implement these functions.

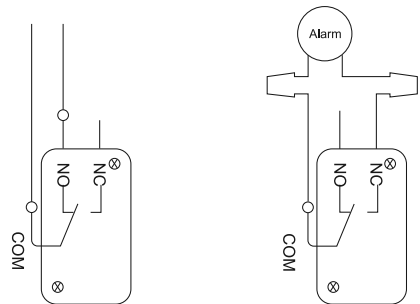


Figure D: Alarm Wiring

6. Make sure that both tubes are free from kinks.

Operation

1. After reading these instructions, consider the following points before plugging the Pump in:
 - a. Verify that the discharge pipe is properly connected.
 - b. Verify that the electrical connection is 120 VAC, 60 Hz.
 - c. Verify that the electrical socket is GFCI protected and in good condition. Test GFCI protected outlet before use.
 - d. Verify that water and moisture cannot get near the power supply socket.
 - e. Verify that the Pump is installed so as to prevent running dry.
2. After confirming the aforementioned points, plug Power Cord into GFCI protected outlet to put Pump into standby mode.
3. Fill reservoir with water manually until Pump starts to confirm that it operates properly.

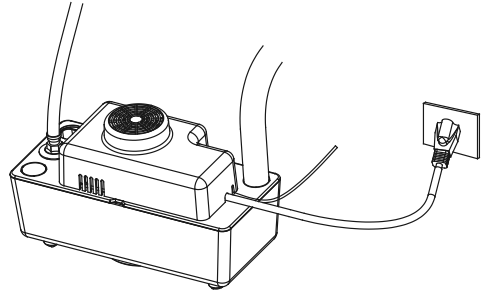


Figure E: Plug Pump into GFCI Outlet

⚠️ WARNING

TO PREVENT SERIOUS INJURY FROM ACCIDENTAL OPERATION:
Unplug the Pump from its electrical outlet before performing any inspection, maintenance, or cleaning procedures.

Quarterly Maintenance

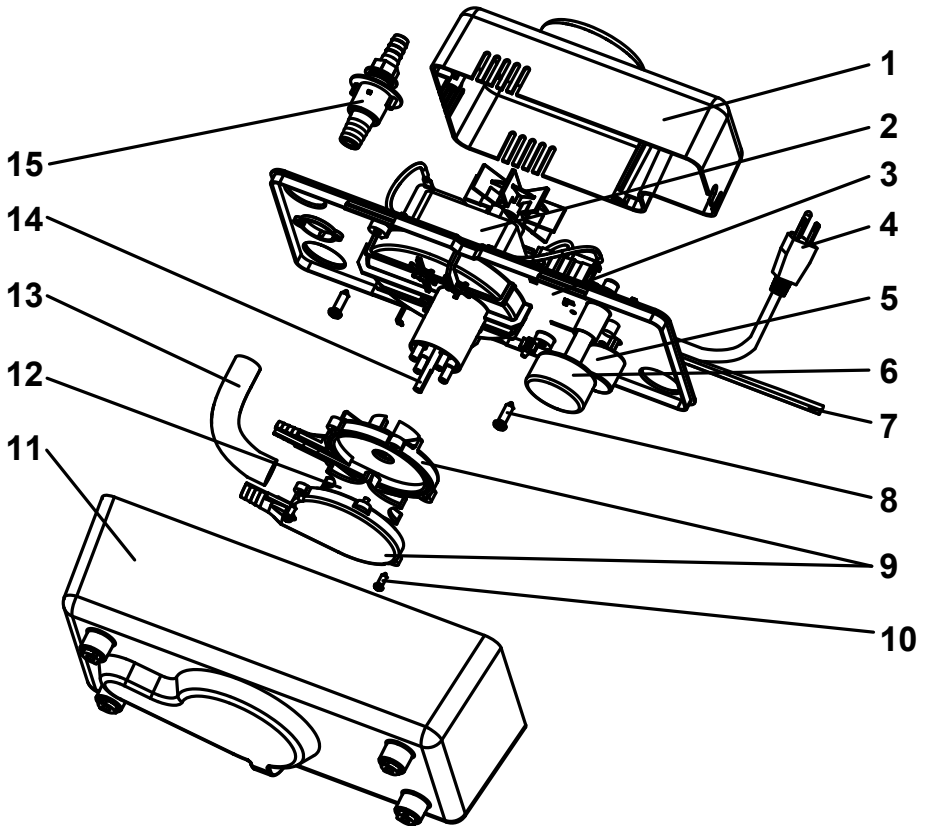
The below maintenance must be performed at least once every 3 months under optimal conditions. For frequent use, or dirty areas, more frequent maintenance is required.

1. Clean sludge and debris from the bottom of the basin.
2. Make sure discharge pipe is free from leaks.
3. Make sure check valve is functioning properly.
4. Manually operate flow switch to determine that Pump turns on/off as intended.

Parts List and Diagram

Part	Description	Qty.
1	Fan Cover	1
2	Motor	1
3	Motor Plate	1
4	Pump Power Cord	1
5	Alarm Float Switch	1
6	Snap Action Float Switch	1
7	Alarm Wire	2
8	Screw	2
9	Volute	1

Part	Description	Qty.
10	Screw	2
11	Storage Water Box	1
12	Impeller	1
13	Connection Soft Pipe	1
14	Shaft	1
15	Check Valve	1
16	Discharge Tube (not shown)	20'
17	Hose Clamp (not shown)	1



Record Product's Serial Number Here: _____

Note: If product has no serial number, record month and year of purchase instead.

Note: Some parts are listed and shown for illustration purposes only, and are not available individually as replacement parts.

Limited 90 Day Warranty

Harbor Freight Tools Co. makes every effort to assure that its products meet high quality and durability standards, and warrants to the original purchaser that this product is free from defects in materials and workmanship for the period of 90 days from the date of purchase. This warranty does not apply to damage due directly or indirectly, to misuse, abuse, negligence or accidents, repairs or alterations outside our facilities, criminal activity, improper installation, normal wear and tear, or to lack of maintenance. We shall in no event be liable for death, injuries to persons or property, or for incidental, contingent, special or consequential damages arising from the use of our product. Some states do not allow the exclusion or limitation of incidental or consequential damages, so the above limitation of exclusion may not apply to you. THIS WARRANTY IS EXPRESSLY IN LIEU OF ALL OTHER WARRANTIES, EXPRESS OR IMPLIED, INCLUDING THE WARRANTIES OF MERCHANTABILITY AND FITNESS.

To take advantage of this warranty, the product or part must be returned to us with transportation charges prepaid. Proof of purchase date and an explanation of the complaint must accompany the merchandise. If our inspection verifies the defect, we will either repair or replace the product at our election or we may elect to refund the purchase price if we cannot readily and quickly provide you with a replacement. We will return repaired products at our expense, but if we determine there is no defect, or that the defect resulted from causes not within the scope of our warranty, then you must bear the cost of returning the product.

This warranty gives you specific legal rights and you may also have other rights which vary from state to state.

