

Owner's Manual & Safety Instructions

Save This Manual Keep this manual for the safety warnings and precautions, assembly, operating, inspection, maintenance and cleaning procedures. Write the product's serial number in the back of the manual near the assembly diagram (or month and year of purchase if product has no number). Keep this manual and the receipt in a safe and dry place for future reference.

19h

BADLAND APEX™

WIRELESS WINCH REMOTE



Visit our website at: <http://www.harborfreight.com>
Email our technical support at: productsupport@harborfreight.com

56504

When unpacking, make sure that the product is intact and undamaged. If any parts are missing or broken, please call 1-888-866-5797 as soon as possible.





Copyright© 2019 by Harbor Freight Tools®. All rights reserved.
No portion of this manual or any artwork contained herein may be reproduced in any shape or form without the express written consent of Harbor Freight Tools. Diagrams within this manual may not be drawn proportionally. Due to continuing improvements, actual product may differ slightly from the product described herein. Tools required for assembly and service may not be included.

⚠WARNING

Read this material before using this product.
Failure to do so can result in serious injury.
SAVE THIS MANUAL.

Table of Contents

Specifications	2	Maintenance	6
Safety	3	Parts List and Diagram	7
Setup	4	Warranty	8
Operation	5		

WARNING SYMBOLS AND DEFINITIONS	
	This is the safety alert symbol. It is used to alert you to potential personal injury hazards. Obey all safety messages that follow this symbol to avoid possible injury or death.
 DANGER	Indicates a hazardous situation which, if not avoided, will result in death or serious injury.
 WARNING	Indicates a hazardous situation which, if not avoided, could result in death or serious injury.
 CAUTION	Indicates a hazardous situation which, if not avoided, could result in minor or moderate injury.
NOTICE CAUTION	Addresses practices not related to personal injury.

Specifications

Remote Control	Wireless/Wired, 12 ft (3.7m) long	Battery	6V, 200mA CR2032 x2
Frequency	315MHz	Receiver IP Rating	IP67
Range	Up to 80 feet (24m)		

IMPORTANT SAFETY INFORMATION



WARNING! Read all instructions.

Failure to follow all instructions may result in fire, serious injury and/or DEATH.

The warnings and precautions discussed in this manual cannot cover all possible conditions and situations that may occur. It must be understood by the operator that common sense and caution are factors which cannot be built into this product, but must be supplied by the operator.

1. Disconnect Receiver from Control Box or Solenoid on Winch before service and after every use. WINCH CAN OPERATE SUDDENLY AT ANY TIME WHILE CONNECTED.
2. Stand clear of Winch, Fairlead, and Wire Rope while connected. Keep bystanders away.
3. Only operate controls when Winch, Fairlead, Wire Rope, and object being winched/ anchor point are all clearly in view.
4. Use with vehicle-mounted recovery winches only. Do not use for any other application.
5. Do not use near sources of radio interference or other remote control systems. They may interfere with operation or cause unexpected operation.
6. If Wire Rope unexpectedly moves, reverses, or stops, disconnect battery cables from battery immediately to prevent serious injury from sudden Wire Rope movement.
7. Do not use more than one remote transmitter near a receiver. Additional transmitters should be turned off and be stored with their batteries removed to prevent accidental operation.
8. Do not use a damaged or malfunctioning Wireless Remote. If Wireless Remote does not work properly, discontinue use immediately and remove its batteries.
9. Read winch manual before use.
10. People with pacemakers should consult their physician(s) before use. Electromagnetic fields in close proximity to heart pacemaker could cause pacemaker interference or pacemaker failure.
11. Maintain labels and nameplates on the Remote. These carry important safety information. If unreadable or missing, contact Harbor Freight Tools for a replacement.



SAVE THESE INSTRUCTIONS.

Setup

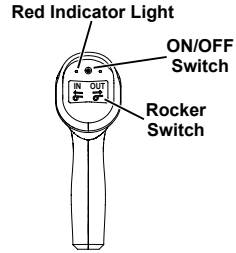
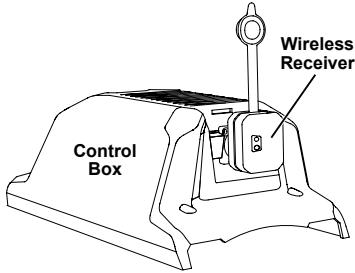


Read the **ENTIRE IMPORTANT SAFETY INFORMATION** section at the beginning of this manual including all text under subheadings therein before set up or use of this product.

Remote Control Setup

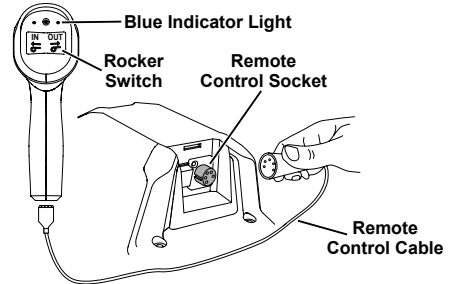
Wireless Remote Setup

1. For wireless Remote Control operation, insert the Receiver into the 5-pin Remote Control Socket on the Control Box or Solenoid of the Winch.
2. Press and hold the ON/OFF Switch on the Remote for approximately 3 seconds until the red indicator light comes on, indicating the Remote Control is operational.



Wired Remote Setup

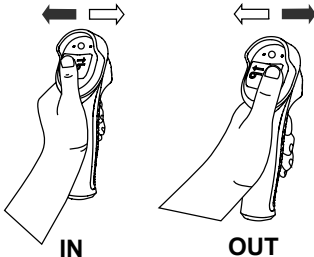
1. To use the Remote Control in a wired configuration, connect the Remote Control Cable to the bottom of the Remote Control and to the 5-pin Remote Control Socket on the Control Box or Solenoid of the Winch.
2. The blue indicator light will come on indicating the Remote Control is ready for use.



Operation

1. Release the Clutch Handle, and pull out about 10 feet of Wire Rope. Leave the Wire Rope laying on the ground and stay clear of the Wire Rope and Hook.
2. Re-engage the Clutch Handle.
3. For wireless operation, press and hold the ON/OFF Switch on the Remote for approximately 3 seconds until the red indicator light comes on, indicating the Remote Control is ready for use.
4. For wired or wireless operation, watch the Spool and Wire Rope and briefly press OUT on the Remote's Rocker Switch to verify that the Wire Rope feeds out.

WARNING! If the Wire Rope does not feed out, check and correct the winch's wiring. Retest after correction.



5. Watch the Spool and Wire Rope and briefly press IN on the Remote's Rocker Switch to verify that the cable retracts.

WARNING! If the Wire Rope does not retract, check and correct the winch's wiring. Retest BOTH functions after correction.

6. If the Remote operates the Winch properly, it is ready for use.
7. With the Clutch Handle in the Engaged position, press IN on the Rocker Switch to retract the Wire Rope—the red indicator light will flash during winding.
8. Press OUT on the Rocker Switch to extend the Wire Rope out.

Note: In wireless mode, the light on the Receiver will be green when the Wire Rope retracts and red when the Wire Rope feeds out.

9. To turn off the Remote Control after use when in wireless mode, press and hold the ON/OFF Switch until the red indicator light goes out, approximately 3 seconds.

Note: In wireless mode, the Remote Control will automatically shut itself off after 2 minutes of inactivity to save the battery.

10. If using the Remote Control in a wired configuration, disconnect the Remote Control Cable from the Remote Control Socket after use.

WARNING! To prevent serious injury from accidental winch operation, disconnect Receiver from Control Box or Solenoid on Winch and disconnect the battery cables from the battery after use. WINCH CAN OPERATE SUDDENLY AT ANY TIME WHILE CONNECTED.

Maintenance



Procedures not specifically explained in this manual must be performed only by a qualified technician.

WARNING



TO PREVENT SERIOUS INJURY FROM ACCIDENTAL OPERATION:

Disconnect Receiver from Control Box or Solenoid, unplug the Remote Control Cable and disconnect the Battery Cables before performing any inspection, maintenance, or cleaning procedures.

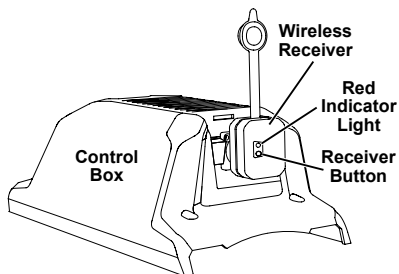
Maintenance

- BEFORE EACH USE**, inspect the general condition of the Remote Control. Check for:
 - cracked or broken parts
 - damaged electrical wiring
 - corroded or loose terminals
 - any other condition that may affect its safe operation.
- AFTER USE**, wipe external surfaces of the Remote Control with clean cloth.

Matching Wireless Remote to Receiver

When batteries are replaced in the Remote, it must be matched to the Receiver using the following procedure:

1. With the Receiver connected to the Winch and the Remote turned on, press the Receiver Button to turn on the Receiver's red indicator light.
2. Immediately press IN or OUT on the Remote's Rocker Switch. If the red light goes out, the match was successful.
3. If the red light remains on, the match failed. Press the Receiver Button again and immediately press IN or OUT on the Rocker Switch.
4. Once matched, the Remote is ready for use.



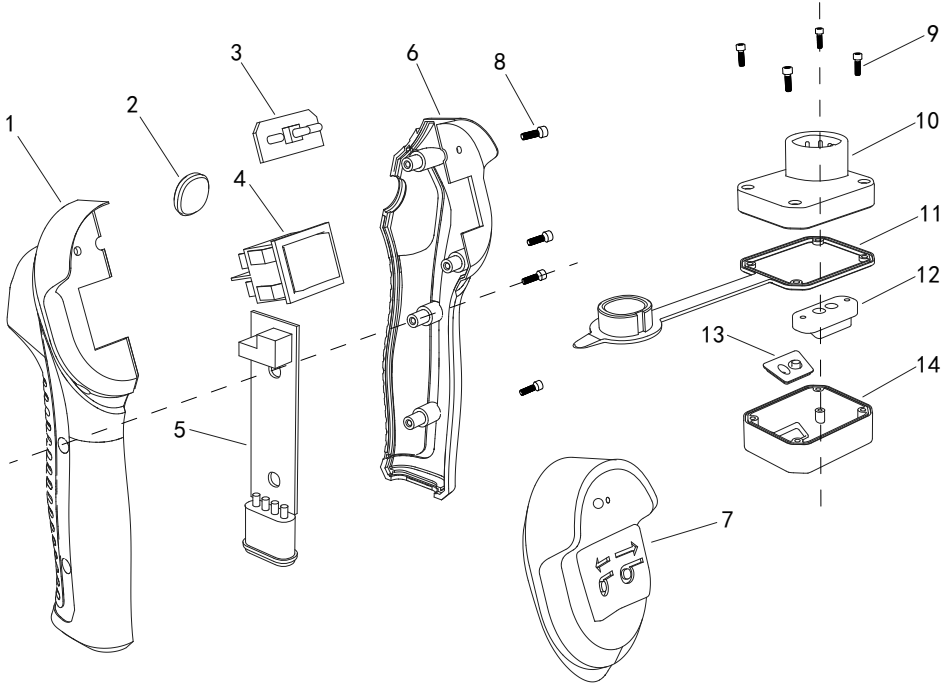
PLEASE READ THE FOLLOWING CAREFULLY

THE MANUFACTURER AND/OR DISTRIBUTOR HAS PROVIDED THE PARTS LIST AND ASSEMBLY DIAGRAM IN THIS MANUAL AS A REFERENCE TOOL ONLY. NEITHER THE MANUFACTURER OR DISTRIBUTOR MAKES ANY REPRESENTATION OR WARRANTY OF ANY KIND TO THE BUYER THAT HE OR SHE IS QUALIFIED TO MAKE ANY REPAIRS TO THE PRODUCT, OR THAT HE OR SHE IS QUALIFIED TO REPLACE ANY PARTS OF THE PRODUCT. IN FACT, THE MANUFACTURER AND/OR DISTRIBUTOR EXPRESSLY STATES THAT ALL REPAIRS AND PARTS REPLACEMENTS SHOULD BE UNDERTAKEN BY CERTIFIED AND LICENSED TECHNICIANS, AND NOT BY THE BUYER. THE BUYER ASSUMES ALL RISK AND LIABILITY ARISING OUT OF HIS OR HER REPAIRS TO THE ORIGINAL PRODUCT OR REPLACEMENT PARTS THERETO, OR ARISING OUT OF HIS OR HER INSTALLATION OF REPLACEMENT PARTS THERETO.

Parts List and Diagram

Part	Description	Qty
1	Left Remote Housing	1
2	Magnet	1
3	Indicator Circuit Board	1
4	Switch	1
5	Remote Circuit Board	1
6	Right Remote Housing	1
7	Splash Guard	1
8	Screw ST3x16	4

Part	Description	Qty
9	Screw ST2.5x20	4
10	Receiver Bottom Cover	1
11	Gasket	1
12	Lock Block	1
13	Silicone Pad	1
14	Receiver Top Cover	1
15	3V CR2032 Battery (not shown)	2



Record Product's Serial Number Here: _____

Note: If product has no serial number, record month and year of purchase instead.

Note: Some parts are listed and shown for illustration purposes only, and are not available individually as replacement parts.

SAFETY

SETUP

OPERATION

MAINTENANCE

Limited 90 Day Warranty

Harbor Freight Tools Co. makes every effort to assure that its products meet high quality and durability standards, and warrants to the original purchaser that this product is free from defects in materials and workmanship for the period of 90 days from the date of purchase. This warranty does not apply to damage due directly or indirectly, to misuse, abuse, negligence or accidents, repairs or alterations outside our facilities, criminal activity, improper installation, normal wear and tear, or to lack of maintenance. We shall in no event be liable for death, injuries to persons or property, or for incidental, contingent, special or consequential damages arising from the use of our product. Some states do not allow the exclusion or limitation of incidental or consequential damages, so the above limitation of exclusion may not apply to you. THIS WARRANTY IS EXPRESSLY IN LIEU OF ALL OTHER WARRANTIES, EXPRESS OR IMPLIED, INCLUDING THE WARRANTIES OF MERCHANTABILITY AND FITNESS.

To take advantage of this warranty, the product or part must be returned to us with transportation charges prepaid. Proof of purchase date and an explanation of the complaint must accompany the merchandise. If our inspection verifies the defect, we will either repair or replace the product at our election or we may elect to refund the purchase price if we cannot readily and quickly provide you with a replacement. We will return repaired products at our expense, but if we determine there is no defect, or that the defect resulted from causes not within the scope of our warranty, then you must bear the cost of returning the product.

This warranty gives you specific legal rights and you may also have other rights which vary from state to state.

FCC STATEMENT

Caution: The user is cautioned that changes or modifications not expressly approved by the party responsible for compliance could void the user's authority to operate the equipment.

This device complies with Part 15 of the FCC Rules. Operation is subject to the following two conditions: (1) this device may not cause harmful interference, and (2) this device must accept any interference received, including interference that may cause undesired operation.

Note: This equipment has been tested and found to comply with the limits for a Class B digital device, pursuant to Part 15 of the FCC Rules. These limits are designed to provide reasonable protection against harmful interference in a residential installation. This equipment generates, uses and can radiate radio frequency energy and, if not installed and used in accordance with the instructions, may cause harmful interference to radio communications. However, there is no guarantee that interference will not occur in a particular installation.

If this equipment does cause harmful interference to radio or television reception, which can be determined by turning the equipment off and on, the user is encouraged to try to correct the interference by one or more of the following measures:

- Re-orient or relocate the receiving antenna.
- Increase the separation between the equipment and receiver.
- Connect the equipment into an outlet on a circuit different from that to which the receiver is connected.
- Consult the dealer or an experienced radio/TV technician for help.

The logo for BADLAND is rendered in a bold, blocky, outlined font. The letters are thick and have a double-line border. A small trademark symbol (TM) is located at the bottom right of the letter 'D'.

26541 Agoura Road • Calabasas, CA 91302 • 1-888-866-5797