

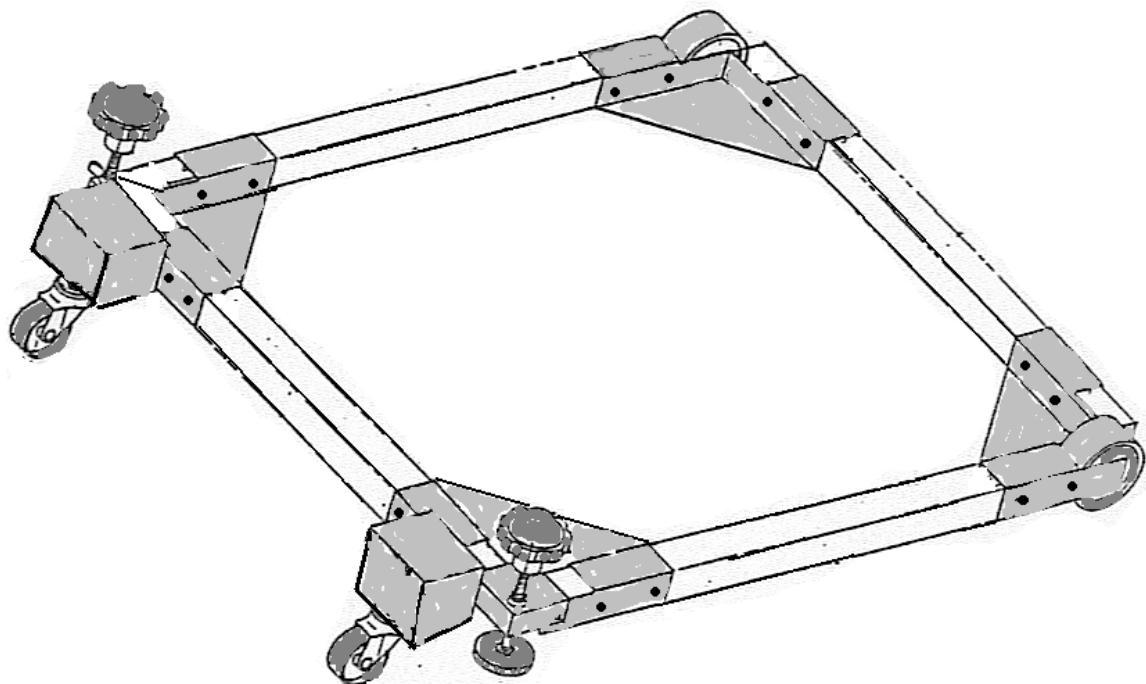
Owner's Manual & Safety Instructions

Save This Manual Keep this manual for the safety warnings and precautions, assembly, operating, inspection, maintenance and cleaning procedures. Write the product's serial number in the back of the manual near the assembly diagram (or month and year of purchase if product has no number). Keep this manual and the receipt in a safe and dry place for future reference.

20f



300 LB. CAPACITY MOBILE BASE



Visit our website at: <http://www.harborfreight.com>
Email our technical support at: productsupport@harborfreight.com

57289

When unpacking, make sure that the product is intact and undamaged. If any parts are missing or broken, please call 1-888-866-5797 as soon as possible.

Copyright© 2020 by Harbor Freight Tools®. All rights reserved.
No portion of this manual or any artwork contained herein may be reproduced in any shape or form without the express written consent of Harbor Freight Tools. Diagrams within this manual may not be drawn proportionally. Due to continuing improvements, actual product may differ slightly from the product described herein.
Tools required for assembly and service may not be included.

⚠ WARNING

Read this material before using this product.
Failure to do so can result in serious injury.
SAVE THIS MANUAL.

Specifications

Weight Capacity	300 lb
-----------------	--------

IMPORTANT SAFETY INFORMATION

WARNING! When using this tool, basic safety precautions should always be followed to reduce the risk of personal serious injury and/or damage to the equipment.

READ ALL INSTRUCTIONS BEFORE USING THIS PRODUCT

1. **Keep floor and work area clean; cluttered work areas invite injuries.**
2. **Keep children away.** Children can be a distraction. Children should never be allowed to play or loiter around work area. Do not let children ever play with, or ride on this Mobile Base.
3. **Keep work area well lighted.** Do not use in an area where you cannot see physical barriers when moving this tool.
4. **Dress properly.** When working around Wheels and Casters, wear hard leather shoes. Always wear ANSI-Approved Impact Safety Goggles.

SAFETY WARNINGS SPECIFIC TO THIS MOBILE BASE

1. Do not exceed the weight capacity of 300 lb for the Mobile Base.
2. Do not use the Mobile Base on any surface with a slope, or dip, such as a driveway. It is to be used ONLY on a flat, level, smooth surface. Move the Mobile Base slowly when it is loaded with a tool.
3. The Mobile Base is not designed as a furniture mover. Do not modify this product or use it for any purpose other than that for which it is meant.
4. Be sure to unplug any electrical attachment before attempting to move this Mobile Base.
5. Before using, lock or tie down any pivoting or moving parts on the tool (to be moved), such as the arm on a band saw.
6. Do not leave the Wheels on the Mobile Base unlocked. (Pad Knob (4), rotated to "up" position)
7. Properly secure the Mobile Base to the tool being used, before moving it.
8. Be aware of dynamic loading. Movement of the Mobile Base under load, or a load dropping onto the Mobile Base could create a momentary load exceeding the load capacity of 300 lb, which could result in damage to the Mobile Base, and/or personal injury.
9. The warnings, cautions, and instructions discussed in this instruction manual cannot cover all possible conditions and situations that may occur. It must be understood by the operator that common sense and caution are factors that cannot be built into this product but must be supplied by the operator.

Record Serial Number Here:

Note: If product has no serial number, record month and year of purchase instead.

Note: Some parts are listed and shown for illustration purposes only, and are not available individually as replacement parts. Specify UPC 792363572897 when ordering parts.

Assembly Instructions



Read the **ENTIRE IMPORTANT SAFETY INFORMATION** section at the beginning of this document including all text under subheadings therein before set up or use of this product.

1. The Corner Supports (1) will fit wood pieces (not included) of varying lengths, depending on the size of the tool to be moved. The sides of the wood should measure 1-1/4"W X 1-1/4"H in order to slide into the openings in the Corner Supports (1).

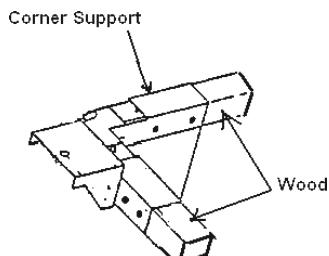


Figure A

2. Mobile Base length would be the length of the tool to which it is to be attached, minus 1-3/4". This is known as, "Wood-A", (not included).
3. Mobile Base width would be the width of the tool to which it is to be attached plus 5/8". This is known as, "Wood-B", (not included).

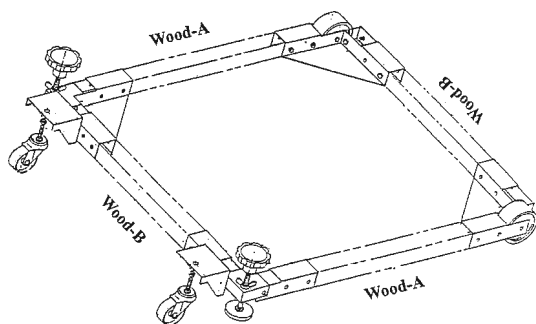


Figure B

4. Warning: Be aware when adding wood pieces to corner supports. This Mobile Base, like any tool has its limitations. Do not overbuild or overload. Always keep in mind the Weight Capacity and the Base size of the tool you wish to load onto this Mobile Base.
5. Use 3/8" drill bit (not included) to drill four holes, two one each side of the ends of "Wood A". Use the pre-drilled holes located in the sides of the Corner Supports as guides for where to drill the holes for the Hex Screws. Push one Hex HD Screw (11), through each hole with the head of the Screw on the inside of the Corner Support (1), and the Lock Nut (16) on the outside.

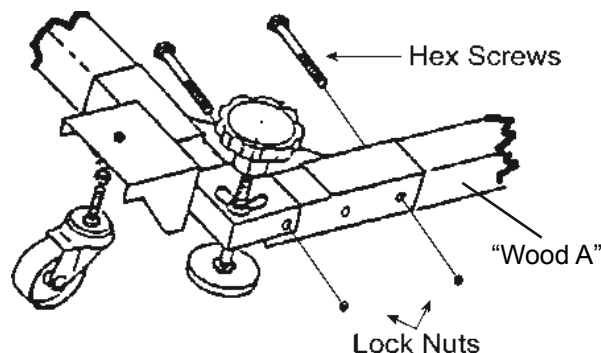


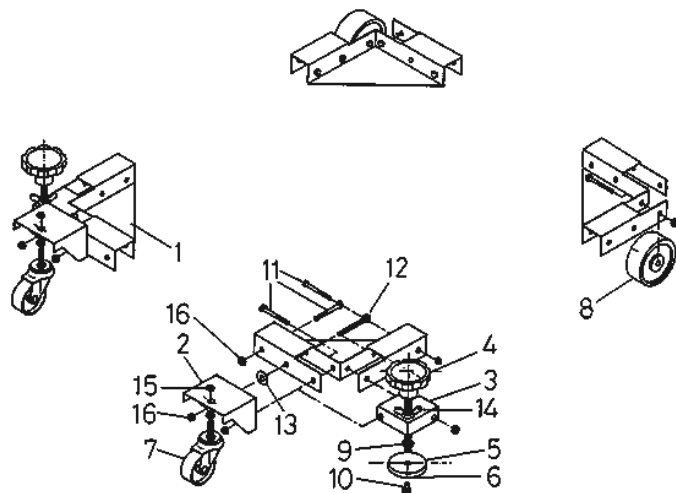
Figure C

6. Repeat for each of the four Corner Supports (1).

NOTE: Once assembled, check each of the Corner Supports (1), and all Hex Screws (11), and Lock Nuts (16) to make sure all parts are assembled correctly and the Mobile Base is stable. Always check for any damaged or worn parts.

Parts List and Diagram

Part	Description	Qty
1	Corner Support	4
2	Casters Bracket	2
3	Pad Bracket	2
4	Pad Knob	2
5	Pad Cover	2
6	Pad	2
7	2" Swivel Caster	2
8	3" Wheel	2
9	Screw Bolt	2
10	Rivet	2
11	Hex Head Screw M8 x 50	16
12	Hex Head Bolt M8 x 55	4
13	Flash Washer M8	2
14	Wing Nut 1/2"	2
15	Nut 3/8" - 16NC	4
16	Nylon Lock Nut M8	20



PLEASE READ THE FOLLOWING CAREFULLY

THE MANUFACTURER AND/OR DISTRIBUTOR HAS PROVIDED THE PARTS LIST AND ASSEMBLY DIAGRAM IN THIS DOCUMENT AS A REFERENCE TOOL ONLY. NEITHER THE MANUFACTURER OR DISTRIBUTOR MAKES ANY REPRESENTATION OR WARRANTY OF ANY KIND TO THE BUYER THAT HE OR SHE IS QUALIFIED TO MAKE ANY REPAIRS TO THE PRODUCT, OR THAT HE OR SHE IS QUALIFIED TO REPLACE ANY PARTS OF THE PRODUCT. IN FACT, THE MANUFACTURER AND/OR DISTRIBUTOR EXPRESSLY STATES THAT ALL REPAIRS AND PARTS REPLACEMENTS SHOULD BE UNDERTAKEN BY CERTIFIED AND LICENSED TECHNICIANS, AND NOT BY THE BUYER. THE BUYER ASSUMES ALL RISK AND LIABILITY ARISING OUT OF HIS OR HER REPAIRS TO THE ORIGINAL PRODUCT OR REPLACEMENT PARTS THERETO, OR ARISING OUT OF HIS OR HER INSTALLATION OF REPLACEMENT PARTS THERETO.

Limited 90 Day Warranty

Harbor Freight Tools Co. makes every effort to assure that its products meet high quality and durability standards, and warrants to the original purchaser that this product is free from defects in materials and workmanship for the period of 90 days from the date of purchase. This warranty does not apply to damage due directly or indirectly, to misuse, abuse, negligence or accidents, repairs or alterations outside our facilities, criminal activity, improper installation, normal wear and tear, or to lack of maintenance. We shall in no event be liable for death, injuries to persons or property, or for incidental, contingent, special or consequential damages arising from the use of our product. Some states do not allow the exclusion or limitation of incidental or consequential damages, so the above limitation of exclusion may not apply to you. THIS WARRANTY IS EXPRESSLY IN LIEU OF ALL OTHER WARRANTIES, EXPRESS OR IMPLIED, INCLUDING THE WARRANTIES OF MERCHANTABILITY AND FITNESS.

To take advantage of this warranty, the product or part must be returned to us with transportation charges prepaid. Proof of purchase date and an explanation of the complaint must accompany the merchandise. If our inspection verifies the defect, we will either repair or replace the product at our election or we may elect to refund the purchase price if we cannot readily and quickly provide you with a replacement. We will return repaired products at our expense, but if we determine there is no defect, or that the defect resulted from causes not within the scope of our warranty, then you must bear the cost of returning the product.

This warranty gives you specific legal rights and you may also have other rights which vary from state to state.



26541 Agoura Road • Calabasas, CA 91302 • 1-888-866-5797