

# Owner's Manual & Safety Instructions

**Save This Manual** Keep this manual for the safety warnings and precautions, assembly, operating, inspection, maintenance and cleaning procedures. Write the product's serial number in the back of the manual near the assembly diagram (or month and year of purchase if product has no number). Keep this manual and the receipt in a safe and dry place for future reference.

21d

# PREDATOR®

## 10" WHEEL KIT FOR PREDATOR® 2" SEMI-TRASH WATER PUMP



Pump sold  
separately

Visit our website at: <http://www.harborfreight.com>  
Email our technical support at: [productsupport@harborfreight.com](mailto:productsupport@harborfreight.com)

57322

When unpacking, make sure that the product is intact and undamaged. If any parts are missing or broken, please call 1-888-866-5797 as soon as possible.

Copyright© 2020 by Harbor Freight Tools®. All rights reserved.

No portion of this manual or any artwork contained herein may be reproduced in any shape or form without the express written consent of Harbor Freight Tools. Diagrams within this manual may not be drawn proportionally. Due to continuing improvements, actual product may differ slightly from the product described herein. Tools required for assembly and service may not be included.

### ⚠ WARNING

Read this material before using this product. Failure to do so can result in serious injury.  
**SAVE THIS MANUAL.**

# IMPORTANT SAFETY INFORMATION

## WARNING

**Read all safety warnings and instructions.**

*Failure to follow the warnings and instructions may result in serious injury.*

**Save all warnings and instructions for future reference.**

1. **Keep work area clean and well lit.**  
*Cluttered or dark areas invite accidents.*
2. **Stay alert, watch what you are doing and use common sense when assembling the Wheel Kit. Do not assemble while you are tired or under the influence of drugs, alcohol or medication.** *A moment of inattention may result in serious personal injury.*
3. **Use personal protective equipment. Always wear eye protection.** *Safety equipment such as dust mask, non-skid safety shoes, hard hat, or hearing protection used for appropriate conditions will reduce personal injuries.*
4. **Dress properly. Do not wear loose clothing or jewelry. Keep your hair, clothing and gloves away from moving parts.** *Loose clothes, jewelry or long hair can be caught in moving parts.*
5. **Turn off and allow water pump to cool completely before assembling the Wheel Kit onto a water pump.**
6. **Support the water pump on a raised platform so that the Wheels and feet can easily be attached.**
7. **Assemble wheel kit completely before attempting to use water pump.** Do not partially install kit, or use only part of the kit.
8. **Do not roll water pump on uneven surfaces, or on inclines.**
9. **Inspect before moving. Do not move if parts loose, bent, or damaged.**
10. **Turn off before moving water pump.** Do not move water pump while in operation or hot.
11. **Secure water pump properly before transporting on a vehicle.**
12. **Maintain labels and nameplates on the tool.**  
These carry important safety information. If unreadable or missing, contact Harbor Freight Tools for a replacement.
13. **This product is not a toy.**  
Keep it out of reach of children.



## SAVE THESE INSTRUCTIONS.

## Assembly Instructions



Read the **ENTIRE IMPORTANT SAFETY INFORMATION** section at the beginning of this manual including all text under subheadings therein before set up or use of this product.

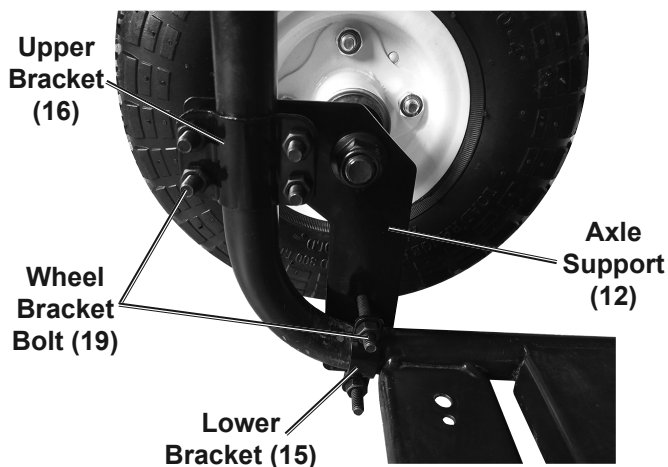
### **⚠️WARNING**

**TO PREVENT SERIOUS INJURY FROM ACCIDENTAL OPERATION:**  
Turn the Power Switch of the water pump off before assembly.

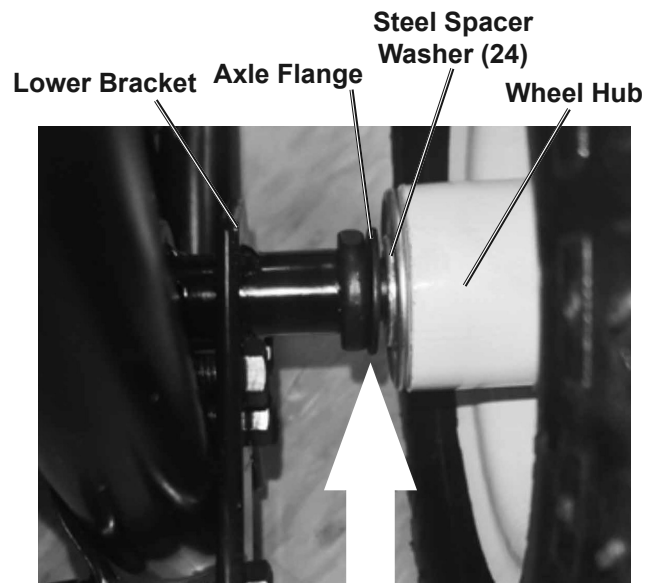
## Installing the Wheels

1. Place the Axle Support (12) outside the pump frame so that the end with two holes is on the bottom and the Axle extends away from the frame.
7. Before installing Wheel (3), install Steel Spacer Washer (24) on Axle (5) as indicated by arrow. Repeat on other side.

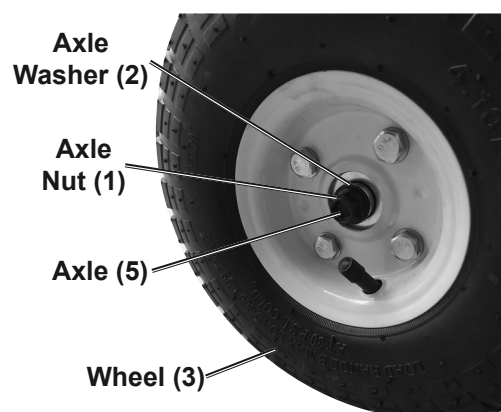
2. Make sure that the Axle Support is aligned as shown, with the four holes near the top and the two holes near the bottom.
3. Place the Lower Bracket (15), that has two holes, around the frame's tube near the bottom of the Support. Secure it with two Wheel Bracket Bolts (19), Spring Washers (21), Washers (20), and M6 Nuts (17).
4. Place the Upper Bracket (16), that has four holes, around the frame's tube near the top of the Support. Secure it with four Wheel Bracket Bolts (19), Spring Washers (21), Washers (20), and M6 Nuts (17).



5. Tighten all Bolts and Nuts securely and evenly. Each Bracket should be centered across the frame tube after tightening.
6. Install the other Axle Support on the other side of the pump's frame. Make sure it is aligned as a mirrored image of what is shown so that the Lower Bracket is on the bottom and the Axle extends out away from the pump frame.



8. Install a Wheel on each Axle, securing each in place with an Axle Washer (2) and Axle Nut (1). Repeat on other side.



## Installing the Foot Support

1. Remove the two existing feet/cushions from under the front of the pump frame and the hardware that secures them.
2. Secure the feet/cushions to the middle holes of the Foot Support (11) using the hardware that secured them to the pump frame previously.
3. Secure the Foot Support under the front of the pump frame, where the feet/cushions were installed previously. Attach it using two Short Bolts (23), Spring Washers (21), Washers (20), and M6 Nuts (17).



Figure A:

## Installing the Handle

1. Attach the Crossbar (13) handle assembly to the pump frame using one Crossbar Bracket (14) on each end secured with 4 Bolts (18), Spring Washers (21), Washers (20), and M6 Nuts (17).
2. After the Crossbar is in place and adjusted properly, tighten the Bolts and Nuts securely.

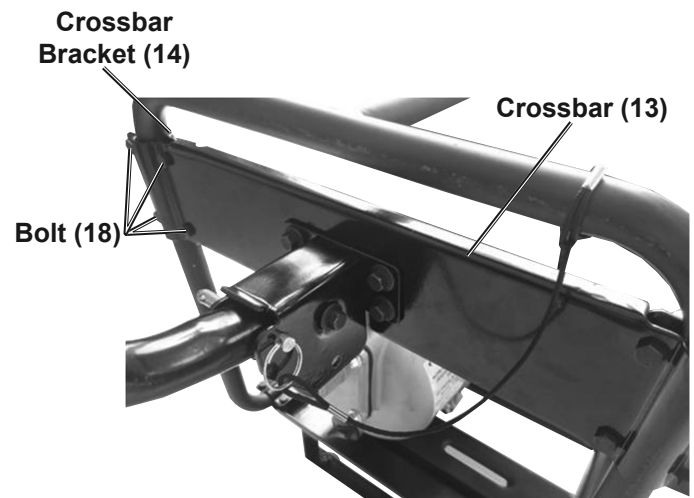


Figure B:

### **WARNING**

#### **TO PREVENT SERIOUS INJURY FROM TOOL FAILURE:**

**Do not use damaged equipment. If abnormal noise or vibration occurs, have the problem corrected before further use.**

1. **BEFORE EACH USE**, inspect the general condition of the wheels and hardware. Check for loose parts, misalignment or binding of moving parts, cracked or broken parts, and any other condition that may affect safe operation of assembly.
2. **AFTER USE**, wipe external surfaces with a clean cloth.

**Record Product's Serial Number Here:** \_\_\_\_\_

**Note:** If product has no serial number, record month and year of purchase instead.

**Note:** Some parts are listed and shown for illustration purposes only, and are not available individually as replacement parts. Specify UPC 792363573221 when ordering parts.

## PLEASE READ THE FOLLOWING CAREFULLY

THE MANUFACTURER AND/OR DISTRIBUTOR HAS PROVIDED THE PARTS LIST AND ASSEMBLY DIAGRAM IN THIS MANUAL AS A REFERENCE TOOL ONLY. NEITHER THE MANUFACTURER OR DISTRIBUTOR MAKES ANY REPRESENTATION OR WARRANTY OF ANY KIND TO THE BUYER THAT HE OR SHE IS QUALIFIED TO MAKE ANY REPAIRS TO THE PRODUCT, OR THAT HE OR SHE IS QUALIFIED TO REPLACE ANY PARTS OF THE PRODUCT. IN FACT, THE MANUFACTURER AND/OR DISTRIBUTOR EXPRESSLY STATES THAT ALL REPAIRS AND PARTS REPLACEMENTS SHOULD BE UNDERTAKEN BY CERTIFIED AND LICENSED TECHNICIANS, AND NOT BY THE BUYER. THE BUYER ASSUMES ALL RISK AND LIABILITY ARISING OUT OF HIS OR HER REPAIRS TO THE ORIGINAL PRODUCT OR REPLACEMENT PARTS THERETO, OR ARISING OUT OF HIS OR HER INSTALLATION OF REPLACEMENT PARTS THERETO.

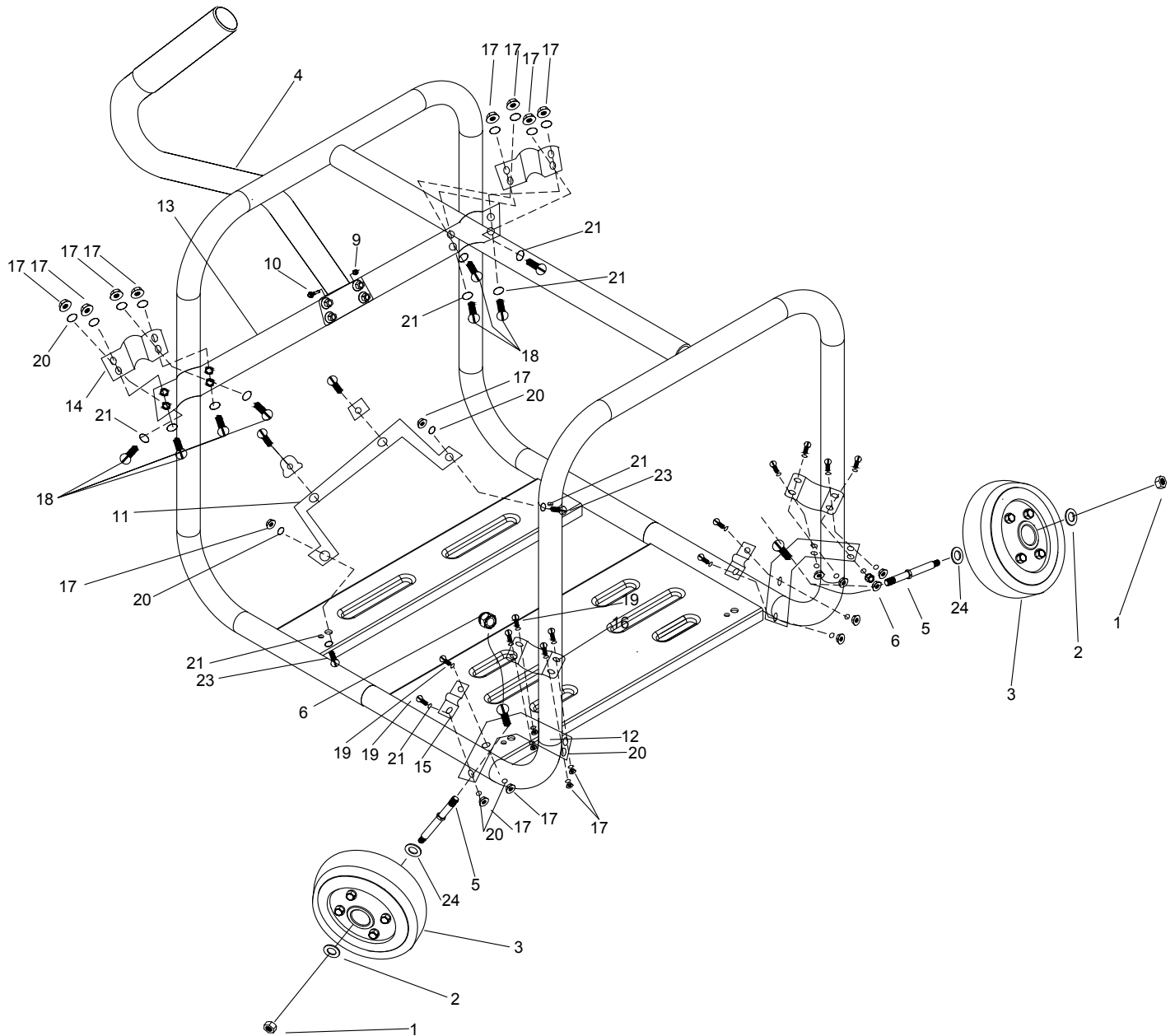
### Parts List and Diagram

### Parts List

Part	Description	Qty
1	M10 Axle Nut	2
2	M10x20 Axle Washer	2
3	Wheel	2
4	Handle	1
5	Axle	2
6	M12 Nut	2
7	Handle Bracket	1
8	M8x16 Bolt	4
9	M8 Nut	1
10	M8x45 Bolt	1
11	Foot Support	1
12	Axle Support	2

Part	Description	Qty
13	Crossbar	1
14	Crossbar Bracket	2
15	Lower Bracket	2
16	Upper Bracket	2
17	M6 Nut	22
18	M6x25 Bolt	8
19	M6x30 Wheel Bracket Bolt	12
20	Washer	22
21	Spring Washer	22
22	M8x64 Pin	1
23	M6x15 Short Bolt	2
24	Steel Spacer Washer	2

# Assembly Diagram



## Limited 90 Day Warranty

Harbor Freight Tools Co. makes every effort to assure that its products meet high quality and durability standards, and warrants to the original purchaser that this product is free from defects in materials and workmanship for the period of 90 days from the date of purchase. This warranty does not apply to damage due directly or indirectly, to misuse, abuse, negligence or accidents, repairs or alterations outside our facilities, criminal activity, improper installation, normal wear and tear, or to lack of maintenance. We shall in no event be liable for death, injuries to persons or property, or for incidental, contingent, special or consequential damages arising from the use of our product. Some states do not allow the exclusion or limitation of incidental or consequential damages, so the above limitation of exclusion may not apply to you. THIS WARRANTY IS EXPRESSLY IN LIEU OF ALL OTHER WARRANTIES, EXPRESS OR IMPLIED, INCLUDING THE WARRANTIES OF MERCHANTABILITY AND FITNESS.

To take advantage of this warranty, the product or part must be returned to us with transportation charges prepaid. Proof of purchase date and an explanation of the complaint must accompany the merchandise. If our inspection verifies the defect, we will either repair or replace the product at our election or we may elect to refund the purchase price if we cannot readily and quickly provide you with a replacement. We will return repaired products at our expense, but if we determine there is no defect, or that the defect resulted from causes not within the scope of our warranty, then you must bear the cost of returning the product.

This warranty gives you specific legal rights and you may also have other rights which vary from state to state.

# PREDATOR®

26541 Agoura Road • Calabasas, CA 91302 • 1-888-866-5797