

# Owner's Manual & Safety Instructions

**Save This Manual** Keep this manual for the safety warnings and precautions, assembly, operating, inspection, maintenance and cleaning procedures. Write the product's serial number in the back of the manual near the assembly diagram (or month and year of purchase if product has no number). Keep this manual and the receipt in a safe and dry place for future reference.

24a

# **DAYTONA™**

## **HEAVY DUTY HYDRAULIC TOE JACK**

**DTJ10T**



Visit our website at: <http://www.harborfreight.com>  
Email our technical support at: [productsupport@harborfreight.com](mailto:productsupport@harborfreight.com)






57664

When unpacking, make sure that the product is intact and undamaged. If any parts are missing or broken, please call 1-888-866-5797 as soon as possible.

Copyright© 2020 by Harbor Freight Tools®. All rights reserved.  
No portion of this manual or any artwork contained herein may be reproduced in any shape or form without the express written consent of Harbor Freight Tools. Diagrams within this manual may not be drawn proportionally. Due to continuing improvements, actual product may differ slightly from the product described herein.  
Tools required for assembly and service may not be included.

### **⚠ WARNING**

Read this material before using this product.  
Failure to do so can result in serious injury.  
**SAVE THIS MANUAL.**

WARNING SYMBOLS AND DEFINITIONS	
	This is the safety alert symbol. It is used to alert you to potential personal injury hazards. Obey all safety messages that follow this symbol to avoid possible injury or death.
	Indicates a hazardous situation which, if not avoided, will result in death or serious injury.
	Indicates a hazardous situation which, if not avoided, could result in death or serious injury.
	Indicates a hazardous situation which, if not avoided, could result in minor or moderate injury.
	Addresses practices not related to personal injury.

## IMPORTANT SAFETY INFORMATION

1. Study, understand, and follow all instructions before operating this device.
2. Do not exceed rated capacity.
3. Use only on a hard, level surface capable of supporting the load.
4. Support the vehicle with appropriate means immediately after lifting.
5. Failure to heed these markings may result in personal injury and/or property damage.
6. Lift only on areas of the vehicle as specified by the vehicle manufacturer.
7. No alterations shall be made to this product.
8. Only attachments and/or adapters supplied by the manufacturer shall be used.
9. Use caution if lifting with Toe. Toe must be positioned against a secure lifting point. Load must be centered on Toe. Only lift on solid surfaces.
10. Do not adjust safety valve.
11. Wear ANSI-approved safety goggles and heavy-duty work gloves during use.
12. Keep clear of load while lifting and lowering.
13. Lower load slowly.
14. Do not use for aircraft purposes.
15. Apply parking brake and chock tires before lifting vehicle.
16. Inspect before every use; do not use if parts loose or damaged.
17. Keep your work area clean and well lit. Cluttered work areas invite accidents.
18. Keep bystanders, children, and visitors away while operating Jack. Distractions can cause you to lose control. Protect others in the work area.
19. Stay alert. Watch what you are doing, and use common sense when operating a jack. Do not use a jack while tired or under the influence of drugs, alcohol, or medication. A moment of inattention while operating jacks may result in serious personal injury.
20. Store idle jacks out of reach of children and other untrained persons. Jacks are dangerous in the hands of untrained users.
21. Jack service must be performed only by qualified repair personnel. Service or maintenance performed by unqualified personnel could result in a risk of injury.
22. When servicing a jack, use only identical replacement parts - refer to attached, product-specific parts list and diagram. Follow instructions in the "Inspection, Maintenance, And Cleaning" section of this manual. Use of unauthorized parts or failure to follow maintenance instructions may create a risk of injury.
23. Maintain labels and nameplates on the Jack. These carry important information. If unreadable or missing, contact Harbor Freight Tools for a replacement.
24. Before use, read manufacturer's instruction manual for the vehicle (or object) you will lift.
25. When lifting only one wheel, support the load immediately with one jack stand (not included) placed under the side of the vehicle being lifted. Align the saddle of the jack stand directly under the vehicle's seam or recommended lifting point.
26. When lifting the entire front end or rear end of a vehicle, support the load immediately with two jack stands. Align the saddles of the jack stands directly under the vehicle's frame or recommended lifting points. Also, adjust the jack stands to the same height.

27. Do not work under the vehicle without properly supporting the vehicle with jack stands.
28. Avoid dangerous oncoming traffic. Use the Jack as far away from the roadside as possible.
29. Industrial applications must follow OSHA requirements.
30. Do not allow anyone in the vehicle while using the Jack. Keep all bystanders a safe distance away from the vehicle.
31. Do not support both ends of the vehicle at the same time.
32. Before lowering the Jack, remove all tools and equipment from under the vehicle.
33. The warnings, precautions, and instructions discussed in this manual cannot cover all possible conditions and situations that may occur. The operator must understand that common sense and caution are factors, which cannot be built into this product, but must be supplied by the operator.



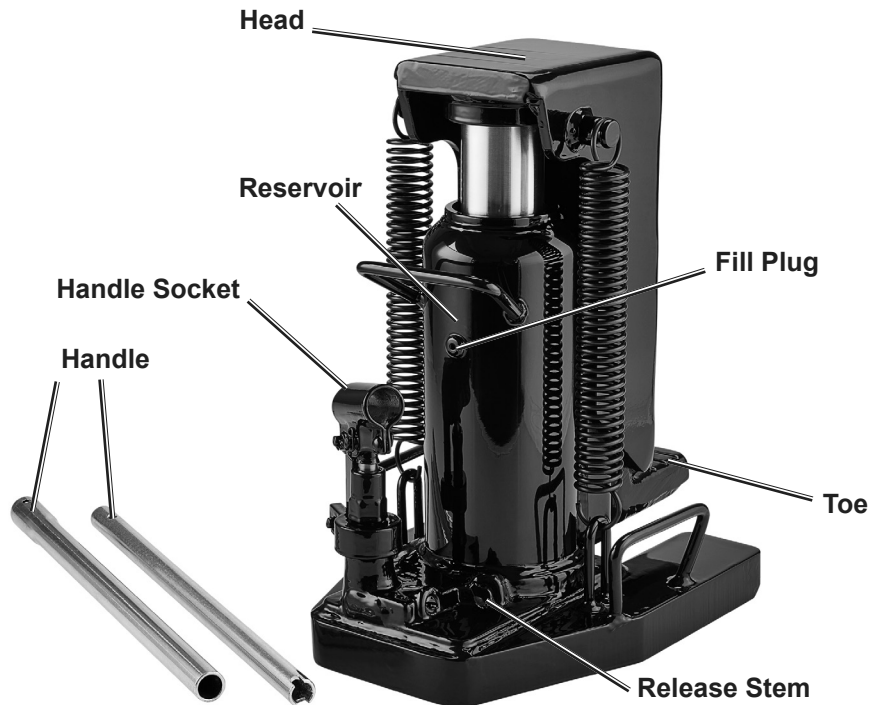
**SAVE THESE INSTRUCTIONS.**

## Specifications

Weight Capacity	10 Tons (20,000 lb.) (Toe Lift) 12.5 Tons (25,000 lb.) (Head Lift)
Low Profile Toe Lift	1-1/4" - 6-7/8"
Top Platform (Head) Lift	12-7/8" - 18-1/2"
Base Dimensions	11-1/2" x 8-5/8"

## Operation

## Components



## Raising Jack

**WARNING! TO PREVENT SERIOUS INJURY:** Only use jack on hard, level surfaces, such as solid concrete slabs.

1. Attach end of Handle to Release Stem.
2. Turn Release Stem clockwise to completely close valve. Do not overtighten valve.
3. Remove handle from Release Stem. Insert Handle into Handle Socket.

4. Make sure load is centered, and that Jack is lifting an appropriate area.

**WARNING! TO PREVENT SERIOUS INJURY:** Toe must be positioned against a secure lifting point. Load must be centered on Toe.

5. Pump Handle to raise load.

## Lowering Jack

1. Attach end of Handle to Release Stem.
2. Turn Handle **slowly** counterclockwise to open valve.

**Note:** Do not turn Release Valve more than two complete revolutions.

## Maintenance and Servicing Instructions



Procedures not specifically explained in this manual must be performed only by a qualified technician.

### **⚠️WARNING**

**TO PREVENT SERIOUS INJURY FROM ACCIDENTAL OPERATION: Do not use damaged equipment. If abnormal noise or vibration occurs, have the problem corrected before further use.**

## Cleaning, Maintenance, and Lubrication

1. **Before each use**, inspect the general condition of the Jack. Check for broken, cracked, or bent parts, loose or missing parts, and any condition that may affect the proper operation of the product. If a problem occurs, have the problem corrected before further use. **Do not use damaged equipment.**
2. **Before each use, thoroughly test the Jack for proper operation prior to its actual use. If the Jack appears not to be working properly, have the problem corrected before further use.**
3. **Before each use, check oil level:**
  - a. Lower the Jack to its lowest position. Follow instructions on lowering Jack on Page 4.
  - b. With the Jack upright in a level, vertical position and the Handle pointing down in the Fulcrum, carefully remove the Oil Fill Plug. The oil level should be level with the bottom of Oil Fill hole. Top off if necessary but do not overfill. Always fill with clean hydraulic jack oil (not included).
  - c. Reinstall Oil Fill Plug. Check Jack operation. Bleed air from system as needed.
4. Change the hydraulic oil at least once every three years:
  - a. With the Jack fully lowered, remove the Oil Fill Plug on the side of the Housing.
  - b. Tip the Jack to allow the old hydraulic oil to drain out of the Housing completely, and dispose of the old hydraulic oil in accordance with local regulations.
  - c. With the Jack upright, completely fill the Housing with a high quality hydraulic oil (not included) until the oil just begins to run out of the Oil Fill hole.
  - d. Then, reinstall the Oil Fill Plug and check jack operation. Bleed air from system as needed.
5. Clean with a clean cloth with a detergent or mild solvent. Then, store the Jack in a safe, dry location out of reach of children and other non-authorized people.

### **WARNING! TO PREVENT SERIOUS INJURY:**

Make sure no contaminants enter the Reservoir when filling with oil. Never use any oil other than hydraulic jack oil to fill Reservoir.

## Troubleshooting

Problem	Possible Causes	Likely Solutions
Toe will not extend.	<ol style="list-style-type: none"> <li>1. Release Stem is open.</li> <li>2. Debris in Valve Sealing Section.</li> <li>3. Crack in Valve Sealing Section.</li> </ol>	<ol style="list-style-type: none"> <li>1. Close Release Stem completely.</li> <li>2. Clean Valve Sealing Section.</li> <li>3. Repair or Replace Valve Sealing Section.</li> </ol>
Jack will not lift to full height.	<ol style="list-style-type: none"> <li>1. Too much hydraulic jack oil in Reservoir.</li> <li>2. Not enough hydraulic jack oil in Reservoir.</li> </ol>	<ol style="list-style-type: none"> <li>1. Remove excess oil and fill with correct amount.</li> <li>2. Top off with hydraulic jack oil to the bottom of the Oil Fill Hole.</li> </ol>
Toe extends but falls immediately.	<ol style="list-style-type: none"> <li>1. Air in system.</li> </ol>	<ol style="list-style-type: none"> <li>1. Press Ram down to lowest position and let air out of Reservoir by pushing Fill Plug sideways.</li> </ol>
External Oil Leak.	<ol style="list-style-type: none"> <li>1. Damage to Reservoir, Release Stem, or Pump.</li> </ol>	<ol style="list-style-type: none"> <li>1. Repair or Replace damaged part.</li> </ol>



**Follow all safety precautions whenever diagnosing or servicing tool. Do not lift anything with Jack while servicing.**

### PLEASE READ THE FOLLOWING CAREFULLY

THE MANUFACTURER AND/OR DISTRIBUTOR HAS PROVIDED THE PARTS LIST AND ASSEMBLY DIAGRAM IN THIS MANUAL AS A REFERENCE TOOL ONLY. NEITHER THE MANUFACTURER OR DISTRIBUTOR MAKES ANY REPRESENTATION OR WARRANTY OF ANY KIND TO THE BUYER THAT HE OR SHE IS QUALIFIED TO MAKE ANY REPAIRS TO THE PRODUCT, OR THAT HE OR SHE IS QUALIFIED TO REPLACE ANY PARTS OF THE PRODUCT. IN FACT, THE MANUFACTURER AND/OR DISTRIBUTOR EXPRESSLY STATES THAT ALL REPAIRS AND PARTS REPLACEMENTS SHOULD BE UNDERTAKEN BY CERTIFIED AND LICENSED TECHNICIANS, AND NOT BY THE BUYER. THE BUYER ASSUMES ALL RISK AND LIABILITY ARISING OUT OF HIS OR HER REPAIRS TO THE ORIGINAL PRODUCT OR REPLACEMENT PARTS THERETO, OR ARISING OUT OF HIS OR HER INSTALLATION OF REPLACEMENT PARTS THERETO.

### Parts List

Part	Description	Qty
1	Toe	1
2	Snap Ring	1
3	Bushing	2
4	O-Ring	1
5	Ram	1
6	Piston Ring	1
7	Sealing Washer	1
8	O-Ring	1
9	Washer	1
10	Washer	1
11	Reset Spring	2
12	Steel Ball	1
13	Body	1
14	Oil Fill Plug	1
15	Steel Ball	1
16	Ball Seat	1
17	Safety Valve Spring	1
18	O-Ring	3
19	Sealing Bolt	1
20	Steel Ball	1
21	Release Stem	1

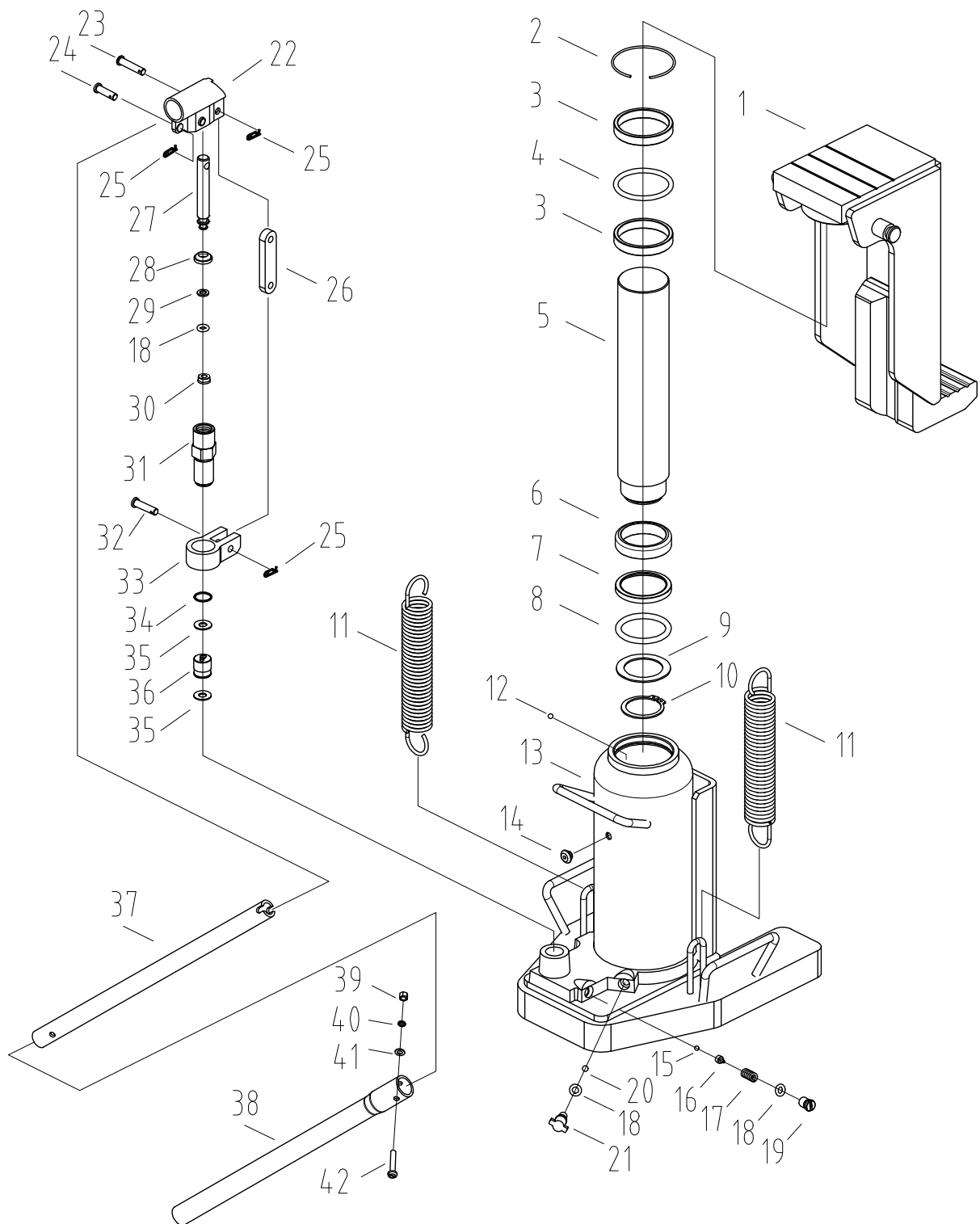
Part	Description	Qty
22	Handle Socket	1
23	Pin	1
24	Pin	1
25	Pin	3
26	Rod Joint	1
27	Pump Core	1
28	Dust Proof Ring	1
29	Gasket	1
30	Y-Ring	1
31	Pump Body	1
32	Pin	1
33	Connecting Rod Seat	1
34	Nylon Gasket	1
35	Copper Washer	2
36	Oil Valve Body Assembly	1
37	Rear Handle	1
38	Front Handle	1
39	Nut	1
40	Washer	1
41	Washer	1
42	Bolt	1

**Record Serial Number Here:**

**Note:** If product has no serial number, record month and year of purchase instead.

**Note:** Some parts are listed and shown for illustration purposes only, and are not available individually as replacement parts. Specify UPC 193175420817 when ordering parts.

# Assembly Diagram



## Limited 90 Day Warranty

Harbor Freight Tools Co. makes every effort to assure that its products meet high quality and durability standards, and warrants to the original purchaser that this product is free from defects in materials and workmanship for the period of 90 days from the date of purchase. This warranty does not apply to damage due directly or indirectly, to misuse, abuse, negligence or accidents, repairs or alterations outside our facilities, criminal activity, improper installation, normal wear and tear, or to lack of maintenance. We shall in no event be liable for death, injuries to persons or property, or for incidental, contingent, special or consequential damages arising from the use of our product. Some states do not allow the exclusion or limitation of incidental or consequential damages, so the above limitation of exclusion may not apply to you. THIS WARRANTY IS EXPRESSLY IN LIEU OF ALL OTHER WARRANTIES, EXPRESS OR IMPLIED, INCLUDING THE WARRANTIES OF MERCHANTABILITY AND FITNESS.

To take advantage of this warranty, the product or part must be returned to us with transportation charges prepaid. Proof of purchase date and an explanation of the complaint must accompany the merchandise. If our inspection verifies the defect, we will either repair or replace the product at our election or we may elect to refund the purchase price if we cannot readily and quickly provide you with a replacement. We will return repaired products at our expense, but if we determine there is no defect, or that the defect resulted from causes not within the scope of our warranty, then you must bear the cost of returning the product.

This warranty gives you specific legal rights and you may also have other rights which vary from state to state.

# ***DAYTONA***<sup>TM</sup>

26677 Agoura Road • Calabasas, CA 91302 • 1-888-866-5797