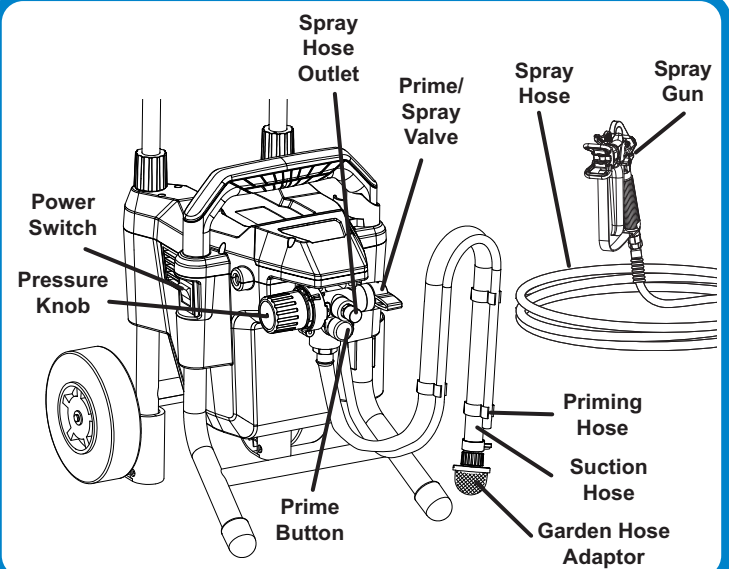


ACCESSORIES INCLUDED:

- 25 ft. HIGH PRESSURE HOSE
- AIRLESS SPRAY GUN
- NOZZLE GUARD
- AVANTI 515 REVERSIBLE AIRLESS PAINT SPRAY TIP
- 4oz. STORAGE FLUID
- WRENCHES
- CLEANING BRUSHES

REPLACEMENT PARTS AVAILABLE

CALL 1-888-866-5797 TO ORDER



Read Owner's Manual Before Use

WARNING! TO PREVENT SERIOUS INJURY: This Quick Start Guide is not intended to replace the Owner's Manual & Safety Instructions. Before use, read all safety warnings and instructions therein to ensure proper usage and to avoid personal injury.

Personal Protection

WARNING! TO PREVENT SERIOUS INJURY: Wear ANSI-approved safety goggles, NIOSH-approved respirator, and heavy-duty work gloves during use.

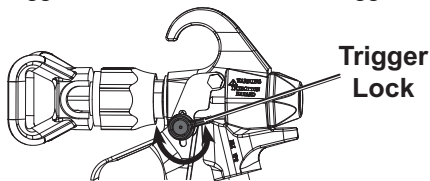
Solvent Selection

WARNING! TO PREVENT SERIOUS INJURY: Only water-based materials or materials with a minimum flash point of 38°C (100°F) should be used for spraying and cleaning. Only use water or mineral spirits for priming and cleaning. Only use water-based or oil-based paint for spraying.

Lock/Unlock Trigger

WARNING! TO PREVENT SERIOUS INJURY: Risk of Injection - Set Trigger Lock when Spray Gun not in use.

- Rotate Trigger Lock all the way back to lock Trigger.
- Rotate Trigger Lock forward to unlock Trigger.



Depressurize Sprayer

WARNING! TO PREVENT SERIOUS INJURY: Risk of Injection - Unit maintains pressure after shut-down - Before servicing, cleaning, or removing any part, shut off power and relieve pressure.

1. Turn Power Switch off.
2. Lock Trigger.
3. Reverse Spray Tip.
4. Turn Pressure Knob to lowest setting.
5. Rotate **PRIME/SPRAY** Valve to **SPRAY** position.
6. Point Spray Gun at interior side of empty grounded metal container. Hold Trigger Guard against container to ground Spray Gun.
7. Unlock Trigger.
8. Press Trigger until pressure is relieved, then release and lock Trigger.
9. Rotate Spray Tip to **SPRAY** position.
10. Rotate **PRIME/SPRAY** Valve to **PRIME** position when Sprayer not in use.



Clean Sprayer

Clean sprayer immediately after use to prevent permanent damage. Returns not accepted and warranty void if sprayer is not properly cleaned immediately after every use.

1 Set Up

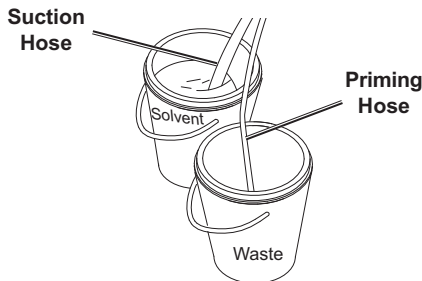
Assemble Sprayer according to Owner's Manual.

2 Priming

Prime with Solvent

WARNING! To prevent high pressure solvent or paint splatter, remove Spray Tip and Nozzle Guard according to Owner's Manual.

1. Depressurize Sprayer, then lock Trigger.
2. Cover floor under Sprayer and containers with drop cloth.
3. Designate two 1 gallon or larger containers, one for solvent and one for waste. If using mineral spirits, use metal containers.
4. Separate Priming Hose from Suction Hose.
 - a. Place Suction Hose on bottom of solvent container.
 - b. Place Priming Hose on bottom of waste container.



5. Fill solvent container with enough solvent to cover filter by 1".
 - Water for water-based paint.
 - Mineral spirits for oil-based paint.

6. Prime Pump:

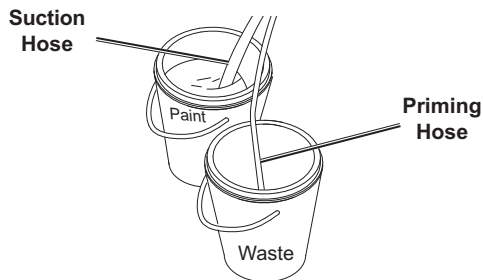
- a. Turn Pressure Knob to **PRIME/CLEAN** indicator.
- b. Rotate **PRIME/SPRAY** Valve to **PRIME** position.
- c. Press **PRIME** Button three times.
- d. Plug Sprayer into 120VAC grounded GFCI outlet.
- e. Turn Power Switch on. Pump will start. If pump does not start, turn Pressure Knob clockwise until it starts.
- f. When solvent begins to flow out of Priming Hose, turn Power Switch off.

NOTE: Dispose of solvent, paint and waste according to local hazardous waste standards.

*Only use water or mineral spirits for priming and cleaning.
Only use water-based or oil-based paint for spraying.*

Prime with Paint

1. Lock Trigger.
2. **CAUTION!** To prevent high pressure solvent or paint splatter, remove Spray Tip and Nozzle Guard according to Owner's Manual.
3. Strain paint through paint strainer.
4. Remove Suction Hose from solvent container and place on bottom of paint container.
5. Leave Priming Hose in waste container.



6. Prime Pump:

- a. Turn Pressure Knob to **PRIME/CLEAN** indicator.
- b. Rotate **PRIME/SPRAY** Valve to **PRIME** position.
- c. Turn Power Switch on. Pump will start. If pump does not start, turn Pressure Knob clockwise until it starts.
- d. When solvent has been purged and paint begins to flow out of Priming Hose, rotate **PRIME/SPRAY** Valve to **SPRAY** position. Pump will cycle on then stop.

7. Prime Spray Gun:

- a. Unlock Trigger.
 - b. Point Spray Gun at interior side of waste container.
 - c. Press Trigger.
 - d. When solvent has been purged and paint begins to flow, release and lock Trigger. Pump will cycle on then stop.
8. Rotate **PRIME/SPRAY** Valve to **PRIME** position.
 9. Remove Priming Hose from waste container and place into paint container.



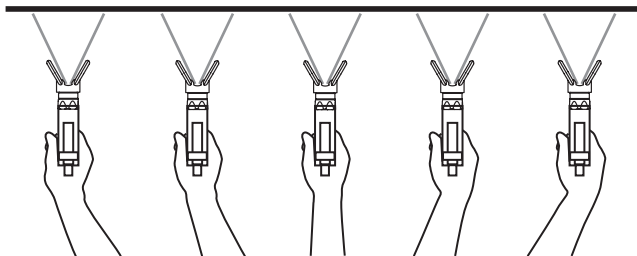
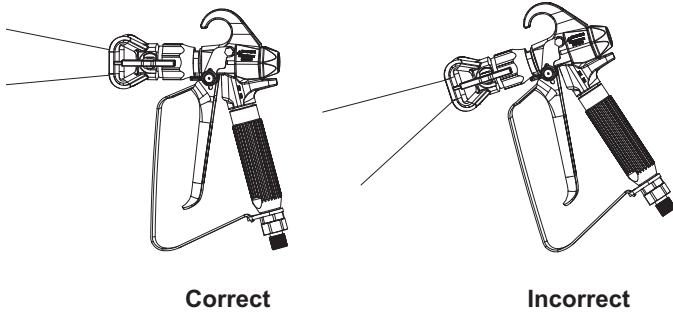
NOTE: Dispose of solvent, paint and waste according to local hazardous waste standards.

Clean Sprayer immediately after use to prevent permanent damage.

3 Spraying

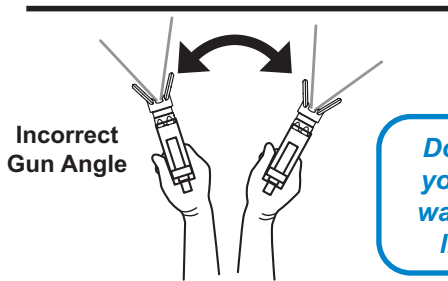
Proper Spraying Techniques

Keep the Spray Gun upright and at a right angle to the workpiece.



Correct Gun Angle

Move your arm, not just your wrist. Point gun directly towards the surface and maintain an even, steady distance and speed.



Incorrect Gun Angle

Do not pivot your wrist or wave the gun like a fan.

Before use, the Sprayer must be primed.

Note: Remove or cover objects that you want to protect from overspray and paint mist.

1. Attach Nozzle Guard and Spray Tip according to Owner's Manual.

AVANTI TIP CHART					
Tip Size	Oil-Based		Water-Based		
	Stain	Primer & Enamel	Primer & Stain	Interior Paint	Exterior Paint
513	X	X	X	X	
515		X	X	X	X
517			X	X	X

2. Rotate **PRIME/SPRAY** Valve to **SPRAY** position.
3. Turn Pressure Knob to **HIGH SPRAY** indicator.

Note: Practice spraying techniques on a scrap workpiece.

4. Point Spray Gun 10" - 12" away from scrap workpiece.
5. Unlock and press Trigger fully and spray following "**Proper Spraying Techniques**" and "**To Avoid Paint Build Up**".
6. Adjust Pressure Knob as necessary to achieve desired consistency and reduce overspray.
7. When finished spraying:
 - a. Rotate **PRIME/SPRAY** Valve to **PRIME** position.
 - b. Turn Power Switch off.

Clearing Spray Tip Blockage

- a. Lock Trigger.
- b. Reverse Spray Tip.
- c. Unlock Trigger and Spray on scrap workpiece.
- d. Release and lock Trigger.

4 After Every Use - Cleaning

Clean sprayer immediately after use to prevent permanent damage. Returns not accepted & warranty void if sprayer is not properly cleaned immediately after every use.

For Cleaning with Garden Hose, see Instruction Manual.

1. Depressurize Sprayer and lock Trigger.
2. **CAUTION!** To prevent high pressure solvent or paint splatter, remove Spray Tip, Seal, and Nozzle Guard according to Owner's Manual.
3. Designate two 1 gallon containers, one for solvent and one for waste. If using mineral spirits, use metal containers.
4. Remove Suction and Priming Hoses from paint container and wipe off excess paint.
5. Place Suction Hose on bottom of solvent container.
6. Place Priming Hose on bottom of waste container.
7. Fill solvent container with enough solvent to cover filter by 4".
 - Water for water-based paint.
 - Mineral spirits for oil-based paint.
8. Place Nozzle Guard, Spray Tip and Seal in small container of:
 - Soap and water for water-based paint.
 - Mineral spirits for oil-based paint.

(Continued on page 4)

(Continued from page 3)

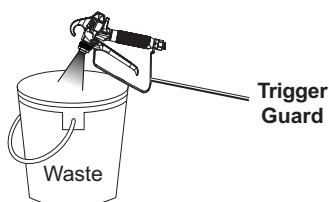
9. Clean Pump

- Turn Pressure Knob to **PRIME/CLEAN** indicator.
- Rotate **PRIME/SPRAY** Valve to **PRIME** position.
- Plug Sprayer into 120VAC grounded GFCI outlet.
- Turn Power Switch on. Pump will start. If pump does not start, turn Pressure Knob clockwise until it starts.
- When paint has been purged and solvent begins to run clear, rotate **PRIME/SPRAY** Valve to **SPRAY** position. Pump will cycle on then stop.

10. Clean Hoses and Spray Gun

- Unlock Trigger.
- Point Spray gun into paint container, then press Trigger to pump excess paint back into paint container.
- Point Spray Gun at interior side of waste container.

Note: If using mineral spirits, hold Trigger Guard against edge of metal waste container to ground Spray Gun.



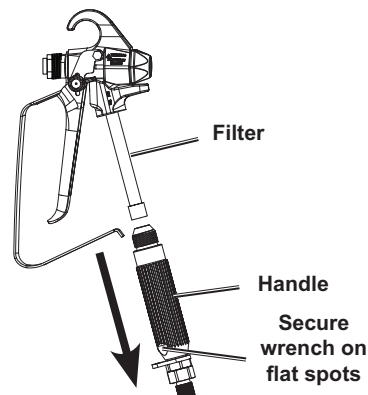
- Press Trigger until solvent runs clear, then release and lock Trigger.
- If mineral spirits used, clean again with water.
 - When finished:
 - Rotate **PRIME/SPRAY** Valve to **PRIME** position.
 - Turn Power Switch off.
 - Unplug Sprayer.
 - Remove Hoses from containers.
 - Let Hoses dry completely before storage.

5 Long-Term Storage

- Clean Sprayer.
- Depressurize Sprayer.
- Designate storage area in a clean dry location out of reach of children.
- Remove Suction Hose from Sprayer.
- Attach Suction Hose, included with Storage Fluid, to Sprayer.
- Open Storage Fluid bottle, place Suction and Prime Hoses in bottle, then place bottle on ground.
- Rotate **PRIME/SPRAY** Valve to **PRIME** position.

14. Clean Filter, Nozzle Guard, Spray Tip and Seal

- Depressurize Sprayer.
- Turn Power Switch off.
- Unplug Sprayer.
- Remove Spray Gun from Spray Hose.
- Remove Handle from Spray Gun with included wrench.



- Remove Filter by turning it counterclockwise.
 - Place Filter in container of solvent with Nozzle Guard, Spray Tip and Seal.
 - Using included brush, scrub accessories until clean.
 - Let accessories dry completely.
 - Clean Spray Gun exterior with a cloth and proper solvent.
 - Reassemble Spray Gun and attach to Spray Hose.
- Store Sprayer in a clean dry location out of reach of children.
If Sprayer will not be used for longer than 48 hours, store according to **Long-Term Storage below**.

NOTE: *Dispose of solvent, paint and waste according to local hazardous waste standards.*

- Plug Sprayer into 120VAC grounded GFCI outlet.
- Turn Power Switch on. Pump will start. If pump does not start, turn Pressure Knob clockwise until it starts.
- When Storage Fluid begins to flow out of Priming Hose, turn Power Switch off.
- Unplug Sprayer.
- Leave Hoses in Storage Fluid bottle.

NOTE: *After storage, dispose of storage fluid according to local hazardous waste standards.*

AVANTI™