

Owner's Manual & Safety Instructions

Save This Manual Keep this manual for the safety warnings and precautions, assembly, operating, inspection, maintenance and cleaning procedures. Write the product's serial number in the back of the manual near the assembly diagram (or month and year of purchase if product has no number). Keep this manual and the receipt in a safe and dry place for future reference.

231



LONG JAW MASTER PULLER SET



58003

Visit our website at: <http://www.harborfreight.com>
Email our technical support at: productsupport@harborfreight.com

When unpacking, make sure that the product is intact and undamaged. If any parts are missing or broken, please call 1-888-866-5797 as soon as possible.

Copyright© 2021 by Harbor Freight Tools®. All rights reserved.

No portion of this manual or any artwork contained herein may be reproduced in any shape or form without the express written consent of Harbor Freight Tools. Diagrams within this manual may not be drawn proportionally. Due to continuing improvements, actual product may differ slightly from the product described herein. Tools required for assembly and service may not be included.

⚠ WARNING

Read this material before using this product. Failure to do so can result in serious injury. **SAVE THIS MANUAL.**

Specifications

Pulling Capacity	Short Jaw: 4-1/2 ton Medium Jaw: 6-1/2 ton Large Jaw: 8 ton
------------------	---

Important Safety Information

1. Assemble and use only according to these instructions. Improper assembly and usage can create hazards.
2. Wear ANSI-approved safety goggles and heavy-duty work gloves during assembly and use.
3. Keep area clean and well lit.
4. Use only according to vehicle service instructions.
5. Inspect before every use; do not use if parts are loose or damaged.
6. Keep children and other bystanders out of the area.
7. Do not use when tired or when under the influence of drugs or medication.
8. Use as intended only.
9. Maintain product labels and nameplates. These carry important safety information. If unreadable or missing, contact Harbor Freight Tools for a replacement.



SAVE THESE INSTRUCTIONS.

Operation Instructions



Read the ENTIRE IMPORTANT SAFETY INFORMATION section at the beginning of this document including all text under subheadings therein before set up or use of this product.

⚠ WARNING



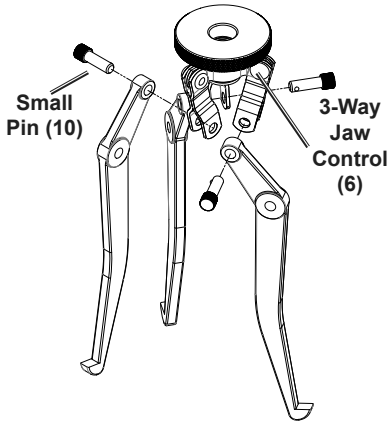
TO PREVENT SERIOUS INJURY FROM EXPLOSION:
Carefully follow service instructions to disable airbag before working near steering wheel or steering column.

Three Jaw

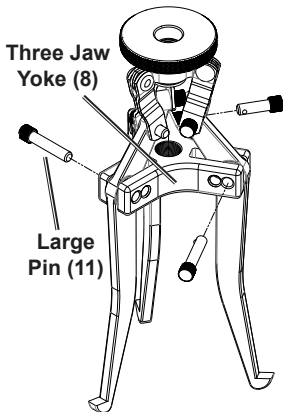
Note: Use appropriate sized parts for object being removed.

Note: Attach Jaws pointing out for internal pulling and pointing in for external pulling.

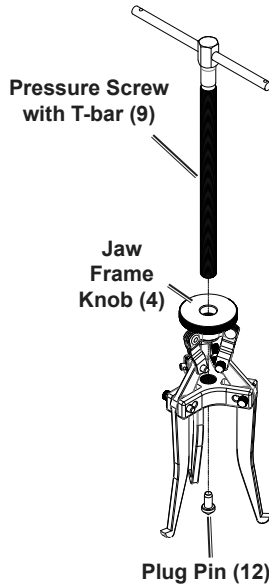
1. Insert Small Pin (10) through 3-Way Jaw Control (6) and desired size of Jaw. Apply this to three Jaws total.



2. Connect Three Jaw Yoke (8) to three Jaws. Insert three Large Pins (11) through either inner or outer holes. Use same hole on each side.



3. Insert Pressure Screw with T-bar (9) through Jaw Frame Knob (4) and Three Jaw Yoke by threading Pressure Screw with T-bar clockwise.
4. Insert Plug Pin (12) into Pressure Screw with T-bar.



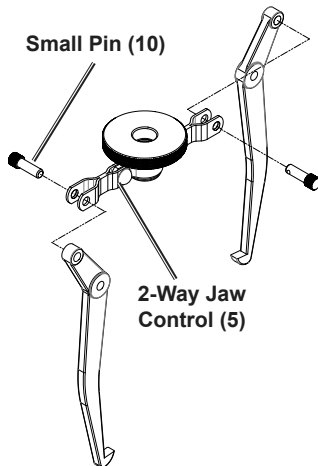
5. Place Jaws onto application.
6. Turn Jaw Frame Knob Clockwise so that Jaws firmly grip onto application.
7. Turn Pressure Screw with T-bar clockwise until Plug Pin is properly seated and makes contact with center of application mount.
8. Continue turning Pressure Screw with T-bar clockwise until application is removed.

Two Jaw

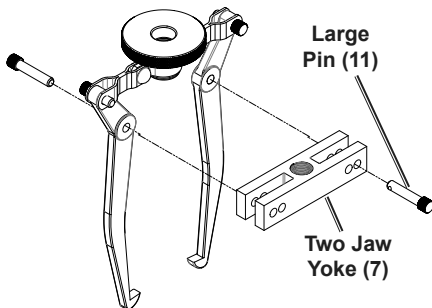
Note: Use appropriate sized parts for object being removed.

Note: Attach Jaws pointing out for internal pulling and pointing in for external pulling.

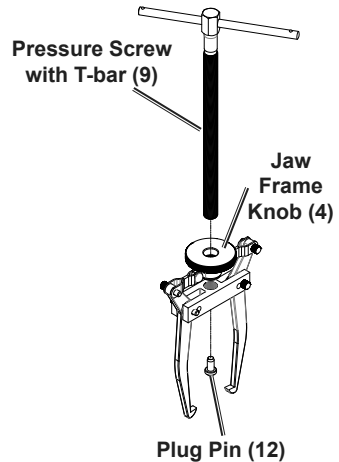
1. Insert Small Pin (10) through 2-Way Jaw Control (5) and desired size of Jaw. Apply this to both Jaws.



2. Connect Two Jaw Yoke (7) to both Jaws. Insert two Large Pins (11) through either inner or outer holes. Use same hole on each side.



3. Insert Pressure Screw with T-bar (9) through Jaw Frame Knob (4) and Two Jaw Yoke by threading Pressure Screw with T-bar clockwise.
4. Insert Plug Pin (12) into Pressure Screw with T-bar.



5. Place Jaws onto application.
6. Turn Jaw Frame Knob Clockwise so that Jaws firmly grip onto application.
7. Turn Pressure Screw with T-bar clockwise until Plug Pin is properly seated and makes contact with center of application mount.
8. Continue turning Pressure Screw with T-bar clockwise until application is removed.

Maintenance



Procedures not specifically explained in this manual must be performed only by a qualified technician.

⚠ WARNING

TO PREVENT SERIOUS INJURY FROM TOOL FAILURE: Do not use damaged equipment. If abnormal noise or vibration occurs, have the problem corrected before further use.

1. **BEFORE EACH USE**, inspect the general condition of the tool. Check for:
 - loose hardware
 - cracked, worn, or damaged Adapters
 - any other condition that may affect its safe operation.
 2. **AFTER EACH USE**, wipe external surfaces of the tool with clean cloth.
 3. Periodically check the threads for damage.
 4. Keep clean and free from dirt, grease and grit.
 5. Store tool in its Carrying Case when not in use.
- If a problem occurs, have the problem corrected before further use.
Do not use damaged equipment.

PLEASE READ THE FOLLOWING CAREFULLY

THE MANUFACTURER AND/OR DISTRIBUTOR HAS PROVIDED THE PARTS LIST AND ASSEMBLY DIAGRAM IN THIS DOCUMENT AS A REFERENCE TOOL ONLY. NEITHER THE MANUFACTURER OR DISTRIBUTOR MAKES ANY REPRESENTATION OR WARRANTY OF ANY KIND TO THE BUYER THAT HE OR SHE IS QUALIFIED TO MAKE ANY REPAIRS TO THE PRODUCT, OR THAT HE OR SHE IS QUALIFIED TO REPLACE ANY PARTS OF THE PRODUCT. IN FACT, THE MANUFACTURER AND/OR DISTRIBUTOR EXPRESSLY STATES THAT ALL REPAIRS AND PARTS REPLACEMENTS SHOULD BE UNDERTAKEN BY CERTIFIED AND LICENSED TECHNICIANS, AND NOT BY THE BUYER. THE BUYER ASSUMES ALL RISK AND LIABILITY ARISING OUT OF HIS OR HER REPAIRS TO THE ORIGINAL PRODUCT OR REPLACEMENT PARTS THERETO, OR ARISING OUT OF HIS OR HER INSTALLATION OF REPLACEMENT PARTS THERETO.

Parts List and Diagram

Parts List

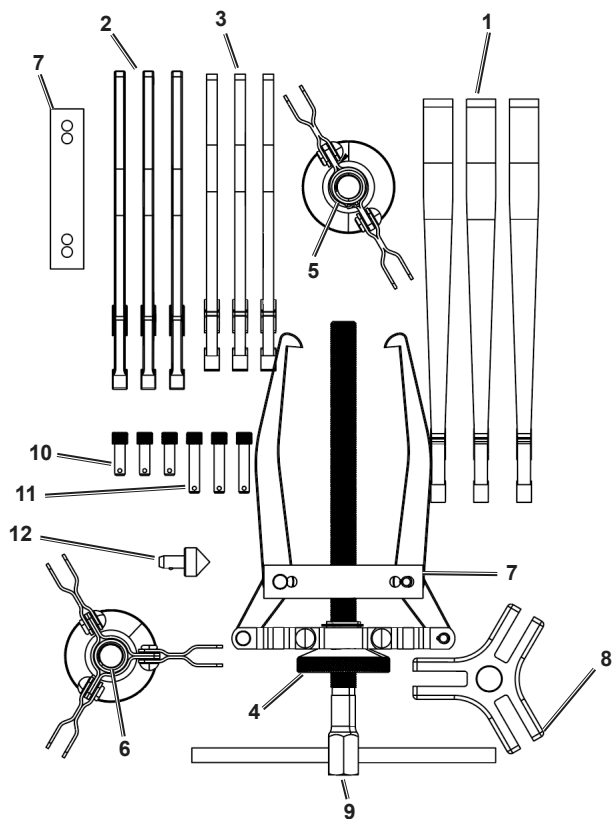
Part	Description	Qty
1	Large Jaw	3
2	Medium Jaw	3
3	Small Jaw	3
4	Jaw Frame Knob	2
5	2-Way Jaw Control	1
6	3-Way Jaw Control	1

Part	Description	Qty
7	Two Jaw Yoke	1
8	Three Jaw Yoke	1
9	Pressure Screw with T-bar	1
10	Small Pin	3
11	Large Pin	3
12	Plug Pin	1

Record Serial Number Here:

Note: If product has no serial number, record month and year of purchase instead.

Note: Some parts are listed and shown for illustration purposes only, and are not available individually as replacement parts. Specify UPC 193175430656 when ordering parts.



Limited Lifetime Warranty

Harbor Freight Tools warrants to the original purchaser that this ICON™ product shall be free from defects in materials and workmanship for its useful life.

If your ICON™ product does not perform in accordance with this warranty, Harbor Freight Tools will, at its option and expense, repair or replace (or elect to refund the purchase price if we cannot repair or replace), your ICON™ product, which shall be your sole and exclusive remedy. To obtain warranty service, ICON™ products must be returned with proof of purchase to a Harbor Freight Tools retail store or returned by mail after contacting Harbor Freight Tools Product Support at 1-888-866-5797 and receiving a return authorization.

This warranty excludes normal wear and tear and does not apply to damage due directly or indirectly to misuse, use or operation other than for the intended purpose or not in accordance with the product manual, abuse, accident, modification or alteration, unauthorized repair, improper storage, neglect, or lack of maintenance. This warranty is in lieu of all other warranties. Harbor Freight Tools is not liable for incidental, indirect, special, consequential, or punitive damages or costs arising from the use of this product. Some states do not allow the exclusion or limitation of incidental or consequential damages, so the above limitation may not apply to you. This warranty gives you specific legal rights, and you may also have other rights which vary from state to state.

ICON is a trademark of Harbor Freight Tools. All other brands and trade names are the property of their respective owners.

