

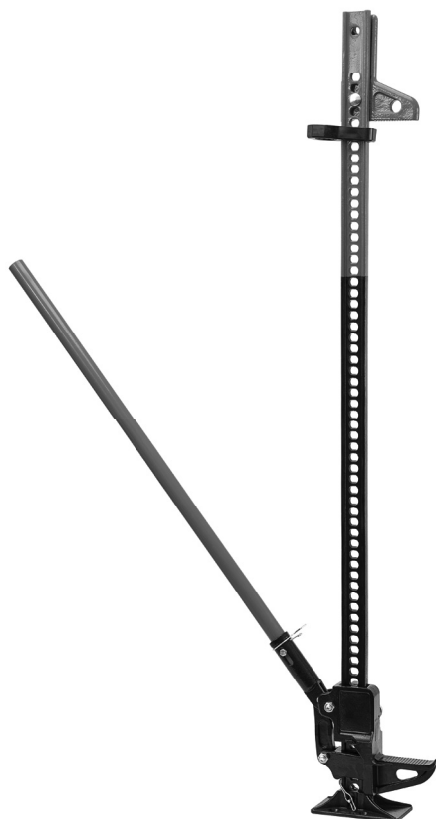
Owner's Manual & Safety Instructions

Save This Manual Keep this manual for the safety warnings and precautions, assembly, operating, inspection, maintenance and cleaning procedures. Write the product's serial number in the back of the manual (or month and year of purchase if product has no number). Keep this manual and the receipt in a safe and dry place for future reference.

22k

BADLAND™

FARM JACK



Visit our website at: <http://www.harborfreight.com>
Email our technical support at: productsupport@harborfreight.com

58395 58448


When unpacking, make sure that the product is intact and undamaged. If any parts are missing or broken, please call 1-888-866-5797 as soon as possible.

Copyright© 2022 by Harbor Freight Tools®. All rights reserved.
No portion of this manual or any artwork contained herein may be reproduced in any shape or form without the express written consent of Harbor Freight Tools. Diagrams within this manual may not be drawn proportionally. Due to continuing improvements, actual product may differ slightly from the product described herein.
Tools required for assembly and service may not be included.

⚠ WARNING

Read this material before using this product.
Failure to do so can result in serious injury.
SAVE THIS MANUAL.

WARNING SYMBOLS AND DEFINITIONS

	This is the safety alert symbol. It is used to alert you to potential personal injury hazards. Obey all safety messages that follow this symbol to avoid possible injury or death.
⚠ DANGER	Indicates a hazardous situation which, if not avoided, will result in death or serious injury.
⚠ WARNING	Indicates a hazardous situation which, if not avoided, could result in death or serious injury.
⚠ CAUTION	Indicates a hazardous situation which, if not avoided, could result in minor or moderate injury.
NOTICE CAUTION	Addresses practices not related to personal injury.

IMPORTANT SAFETY INFORMATION

1. Study, understand, and follow all instructions before operating this device.
2. Do not exceed rated capacity.
3. Use only on a hard, level surface capable of supporting the load.
4. Support the load with appropriate means immediately after lifting.
5. Failure to heed these markings may result in personal injury and/or property damage.
6. Lift only on areas of the vehicle as specified by the vehicle manufacturer.
7. No alterations shall be made to this product.
8. Only attachments and/or adapters supplied by the manufacturer shall be used.
9. Wear ANSI-approved safety goggles and heavy duty work gloves during use.
10. Keep clear of load while lifting and lowering.
11. When lowering load, keep head, body, and hands clear of handle path and hold jack handle firmly with both hands.
12. Keep head and body clear of the jack handle path during use.
13. Do not use on curved or sloping vehicle surfaces. Use properly rated lifting strap when flat lifting surfaces do not exist.
14. When the jack is under load, the handle must be in the upright position and clipped to the main rail.
15. When changing jack from lifting to lowering, handle must be in upright position and clipped to main rail.
16. When lowering the load, the jack handle will have an upward force that must be resisted by the user's hands in a controlled manner.
17. The jack must have a load of 150 lb or more to lower with the handle movement. At loads below 150 lb, the lifting mechanism will slide down the rail to the base.
18. Do not lift the vehicle more than necessary. Lifting more than necessary may cause unexpected movement or tipping.
19. Lower load slowly in controlled fashion. Do not allow load to drop quickly.
20. Apply parking break and chock tires before using.
21. Inspect before every use; do not use if parts are bent, loose, or damaged.
22. Do not alter the jack or use attachments and/or adapters that are not supplied by the manufacturer. Any alterations or modifications to this tool may result in dangerous conditions.
23. Be aware of dynamic loading! Sudden load movement may briefly create excess load causing product failure.
24. Maintain labels and nameplates on tool. These carry important safety information. If unreadable or missing, contact Harbor Freight Tools for replacement.
25. This product is not a toy. Keep it out of reach of children.
26. The warnings, precautions, and instructions discussed in this manual cannot cover all possible conditions and situations that may occur. The operator must understand that common sense and caution are factors which cannot be built into this product but must be supplied by the operator.



SAVE THESE INSTRUCTIONS.

Specifications

Model	58395	58448
Height	48"	60"
Rated Load	5000 lb.	5000 lb. (4.5" - 41") 3300 lb. (41" - 53")
Base Dimensions	5" x 9-3/4"	5" x 9-1/2"
Maximum Lift Height	41"	53"
Minimum Lift Height	4.5"	4.5"

Setup - Before Use



Read the **ENTIRE IMPORTANT SAFETY INFORMATION** section at the beginning of this manual including all text under subheadings therein before set up or use of this product.

Note: For additional information regarding the parts listed in the following pages, refer to *Parts List and Diagram* on page 7.

Components

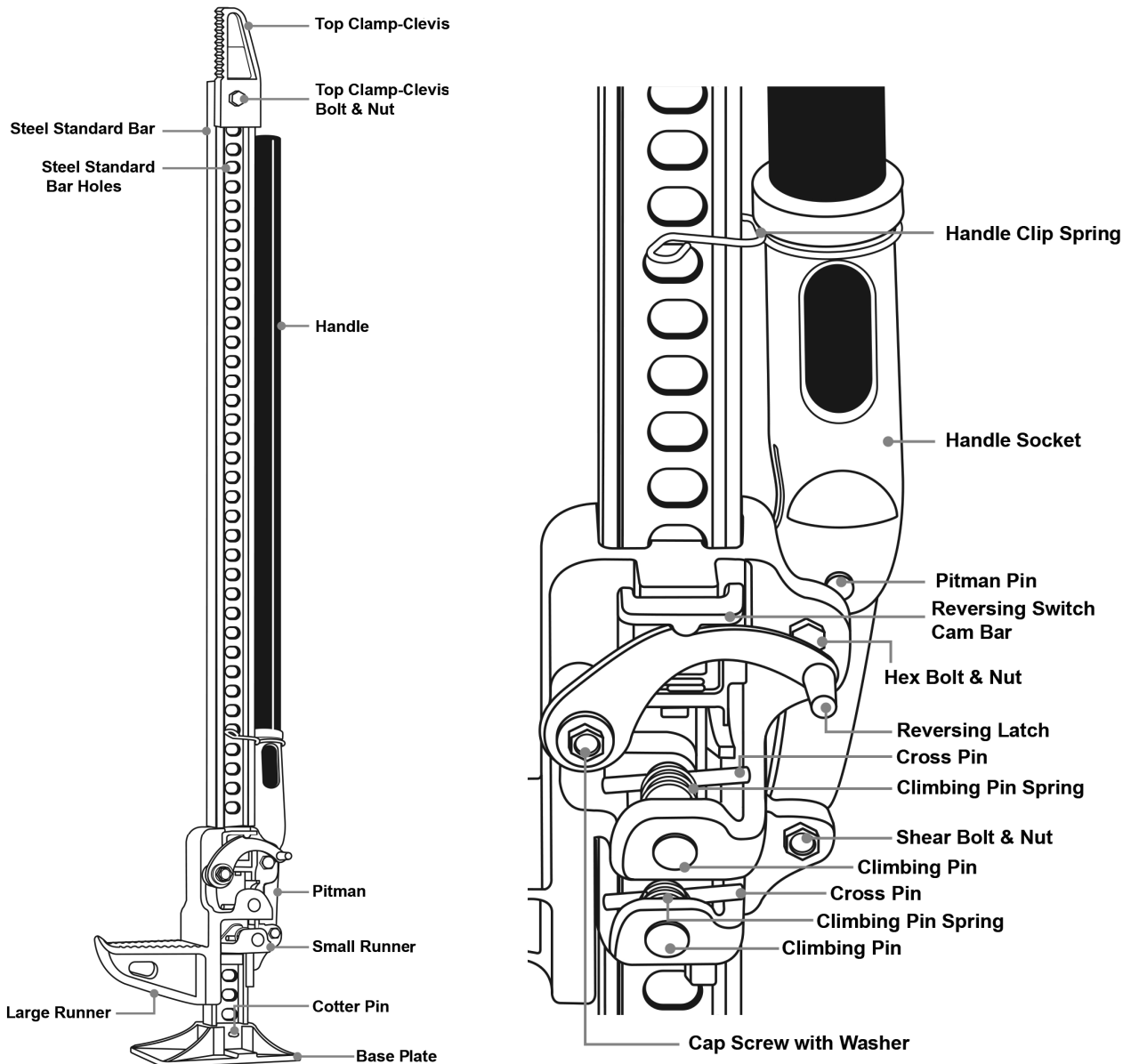


Figure A: Jack Layout

Operation



Read **ENTIRE IMPORTANT SAFETY INFORMATION** section at beginning of this manual including all text under subheadings therein before set up or use of this product.

Note: For additional information regarding the parts listed in the following pages, refer to *Parts List and Diagram* on page 7.

Warning! Keep hand securely on Handle. During lifting and lowering, the weight of the load pushes up against the Jack Handle. If your hands slip off handle, or if handle is horizontal when moving the Reversing Latch, Handle may move very rapidly.

Raising Stationary Load

WARNING! TO PREVENT SERIOUS INJURY:

Dynamic loading may under certain circumstances create a situation where the actual weight being held or lifted is far in excess of Jack or bolt capacity. DO NOT drop weight onto the Lifting Arm, or allow sudden motion of the Lifting Arm, as this may shear the 1/2" bolt or cause the Jack to fail.

WARNING! Do not use the Jack to support or stabilize load. Always securely chock and block (stabilize) load to be lifted.

1. Securely chock and stabilize load to prevent rolling or shifting during lifting process.
2. Place Jack's base plate securely on a firm, level, and dry surface with Steel Standard Bar pointing straight up. See Figure B.
3. Lift the Reversing Latch until it locks in the up position.
4. Pull the handle away from the Steel Standard Bar, releasing the Handle Clip Spring.
5. Grasp the Handle and raise the Lifting Mechanism until the Large Runner is completely and securely under the load.

Note: Keep Handle against Steel Standard Bar with the Handle Clip Spring holding it when not actively lifting or lowering.

6. Grasp the Handle firmly with both hands. Carefully pump Handle up and down to raise load. Do not use an extension on Handle.

Note: The load will be raised on each down stroke of the handle. Watch the load and the Jack carefully. Stop lifting if either one starts to move. Do not continue until it safe to do so. When safe, stabilize and block the load.

7. When the load is raised to desired height, place the Handle in the upright position clipped to the Steel Standard Bar.
8. Block load securely. Lower load onto proper blocks or supports.

WARNING! Do not use Jack for long-term support of a load.

9. Remove Jack from stabilized load.

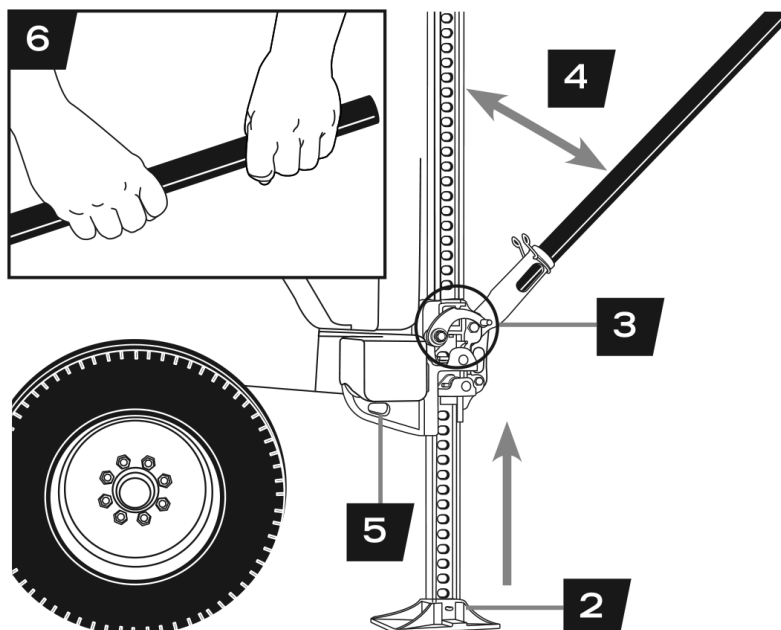


Figure B: Lifting Steps 2 - 6

Lowering a Stationary Load

Note: Jack must have a load of at least 150 lb. If load is less than 150 lb., the Lifting Mechanism will slide down to the Base Plate, dropping your load.

1. Position Jack under raised load and raise the stationary load high enough to remove blocks from under load. See Figure C.

Note: Make sure load is stabilized before removing blocks.

2. Place Handle in upright position clipped to Steel Standard Bar before lowering the load.
3. Move Reversing Latch to down position.
4. Grasp Handle firmly with both hands. Carefully pump Handle to lower load.

Note: The load will be lowered on each up stroke of the Handle.

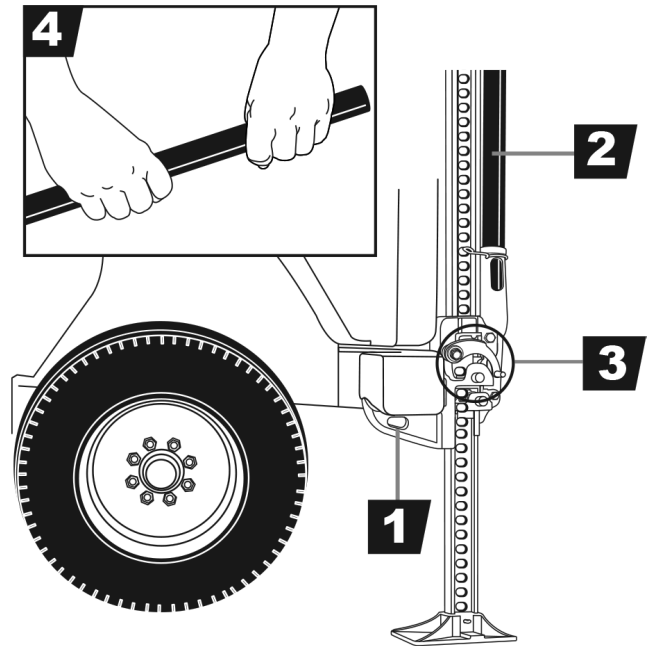


Figure C: Lowering Steps 1 - 4

Clamping

1. Loosen the standard top Clamp-Clevis Bolt.
2. Turn the top Clamp-Clevis 90 degrees to the Steel Standard Bar, and re-tighten Bolt. See Figure D.

Note: You can connect Clamp-Clevis Anywhere along the Steel Standard Bar to use the jack as a clamp.

3. Operate Jack as you would for raising a load. See Raising Stationary Load on page 4.

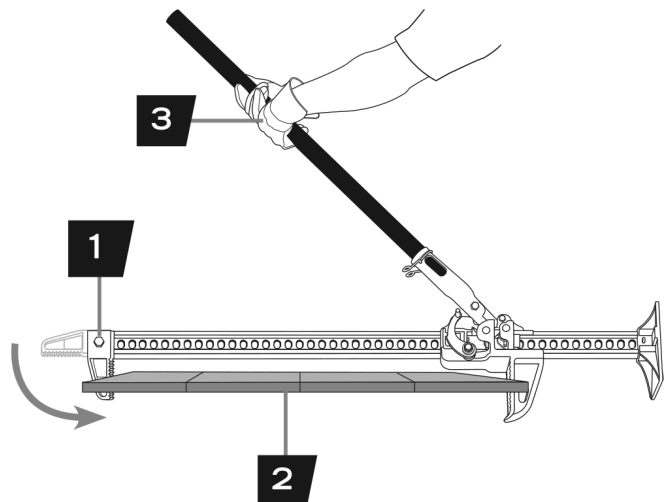


Figure D: Clamping Steps 1 - 3

Winching

1. Make sure top Clamp-Clevis is in line with Steel Standard Bar.
2. Install one end of chain or tow strap (sold separately) securely to the object to be winched. Securely attach the other end of the chain or tow strap to the top Clamp-Clevis of the Jack.
3. Take another chain or tow strap and secure one end to a fixed, stable object. Attach the other end of the chain or tow strap to the large Runner on the Jack.

WARNING! Do not attach chain or strap to bottom hole of the large runner on the Jack.

4. Operate Jack as you would for raising a load. See Raising Stationary Load on page 4.

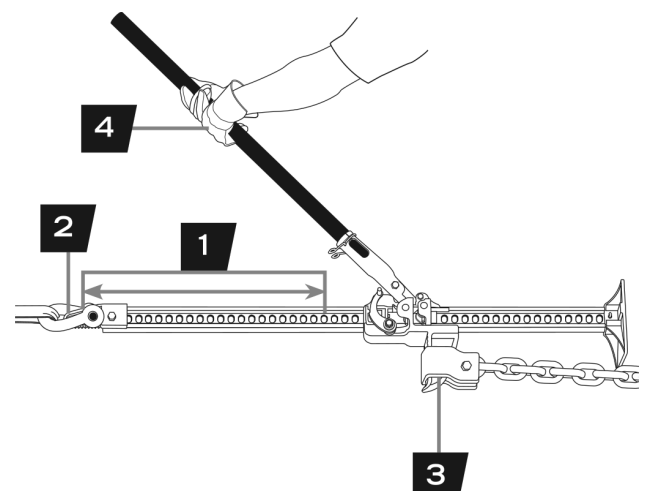


Figure E: Winching Steps 1 - 4

User-Maintenance Instructions



Procedures not specifically explained in this manual must be performed only by a qualified technician.

!WARNING

TO PREVENT SERIOUS INJURY FROM TOOL FAILURE:

Do not use damaged equipment. If abnormal noise occurs, have the problem corrected before further use.

TO PREVENT SERIOUS INJURY:

Remove load from the jack before any procedure on this page.

1. **BEFORE EACH USE**, inspect the general condition of the equipment. Check for:
 - loose hardware
 - misalignment or binding of moving parts
 - cracked or broken parts
 - any other condition that may affect its safe operation.
 - lubricate moving parts of the Jack with lubricating oil.
2. Before each use and after the inspection, thoroughly test the Jack for proper operation prior to its actual use.
3. **AFTER USE**, clean the tool with clean cloth.
4. Store the Jack in a safe, dry location out of reach of children and other non-authorized people.
 - a. Place Handle in upright clipped position against Steel Standard Bar.
 - b. Raise the Reversing Latch until it locks in the up position.
 - c. Store in the upright clipped position in a dry location.

Note: Using Jack without proper lubrication can result in poor performance and damage to Jack. The front and back of the Steel Rail must be kept rust free.

Note: Do not use motor oil or grease to lubricate Jack.

PLEASE READ THE FOLLOWING CAREFULLY

THE MANUFACTURER AND/OR DISTRIBUTOR HAS PROVIDED THE PARTS LIST AND ASSEMBLY DIAGRAM IN THIS MANUAL AS A REFERENCE TOOL ONLY. NEITHER THE MANUFACTURER OR DISTRIBUTOR MAKES ANY REPRESENTATION OR WARRANTY OF ANY KIND TO THE BUYER THAT HE OR SHE IS QUALIFIED TO MAKE ANY REPAIRS TO THE PRODUCT, OR THAT HE OR SHE IS QUALIFIED TO REPLACE ANY PARTS OF THE PRODUCT. IN FACT, THE MANUFACTURER AND/OR DISTRIBUTOR EXPRESSLY STATES THAT ALL REPAIRS AND PARTS REPLACEMENTS SHOULD BE UNDERTAKEN BY CERTIFIED AND LICENSED TECHNICIANS, AND NOT BY THE BUYER. THE BUYER ASSUMES ALL RISK AND LIABILITY ARISING OUT OF HIS OR HER REPAIRS TO THE ORIGINAL PRODUCT OR REPLACEMENT PARTS THERETO, OR ARISING OUT OF HIS OR HER INSTALLATION OF REPLACEMENT PARTS THERETO.

Record Product's Serial Number Here: _____

Note: If product has no serial number, record month and year of purchase instead.

Note: Some parts are listed and shown for illustration purposes only, and are not available individually as replacement parts. Parts may not be interchangeable. Specify item number when ordering:

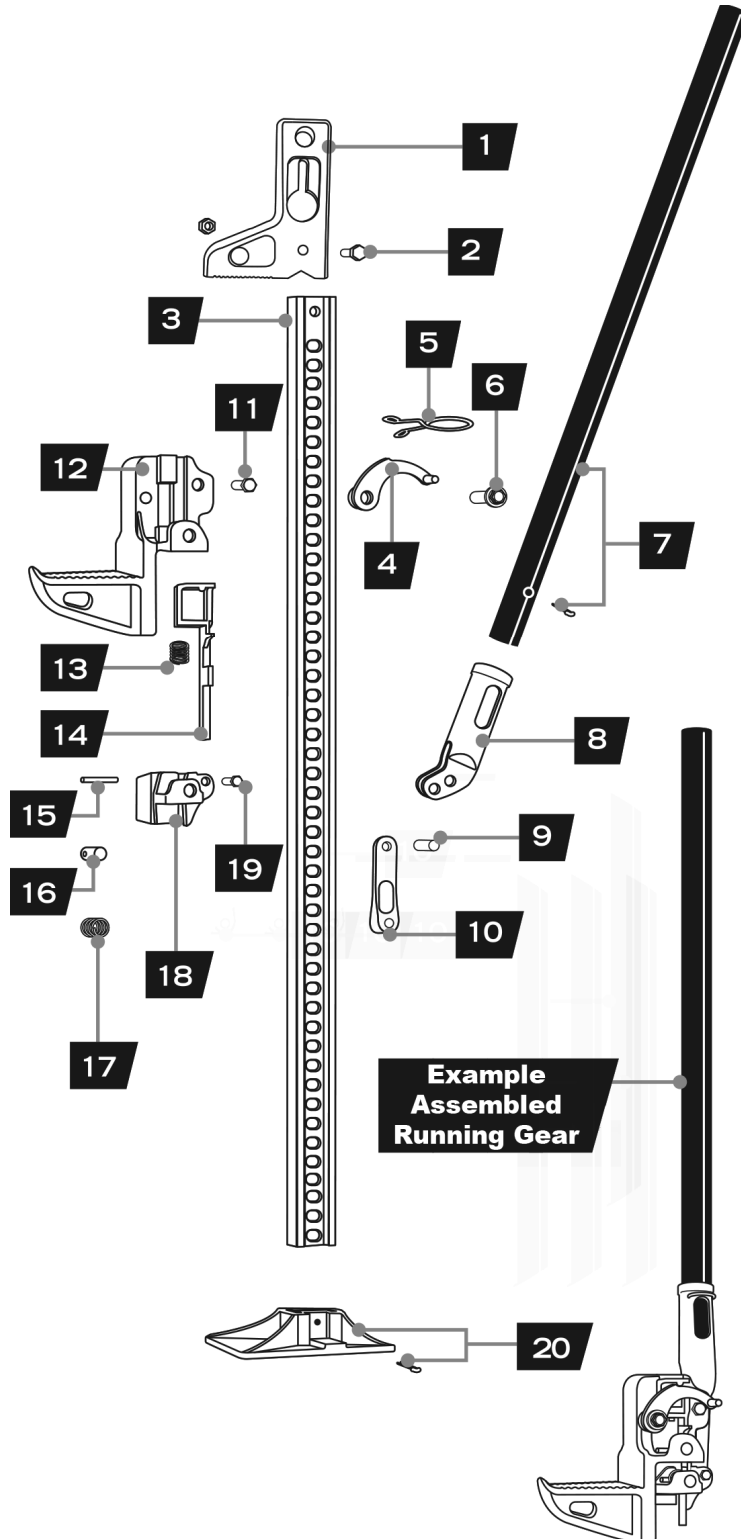
48" Farm Jack (58395): 193175438621

60" Farm Jack (58448): 193175439239

Parts List and Diagram

Part	Description	Qty
1	Top Clamp-Clevis	1
2	Top Clamp-Clevis Bolt and Nut	1
3	Steel Standard Bar	1
4	Reversing Lever	1
5	Handle Clip Spring	1
6	Cap Screw with Washer	1
7	Handle with Cotter Pin	1
8	Handle Socket	1
9	Connecting Rod Pin	1
10	Connecting Rod	1

Part	Description	Qty
11	Hex Bolt and Nut	1
12	Lifting Arm/Large Runner	1
13	Reversing Switch Spring	1
14	Reversing Latch	1
15	Reverse Rod Pin	2
16	Climbing Pin	2
17	Climbing Pin Spring	2
18	Small Runner	1
19	Hex Bolt and Nut	1
20	Base with Cotter Pin	1



Limited 90 Day Warranty

Harbor Freight Tools Co. makes every effort to assure that its products meet high quality and durability standards, and warrants to the original purchaser that this product is free from defects in materials and workmanship for the period of 90 days from the date of purchase. This warranty does not apply to damage due directly or indirectly, to misuse, abuse, negligence or accidents, repairs or alterations outside our facilities, criminal activity, improper installation, normal wear and tear, or to lack of maintenance. We shall in no event be liable for death, injuries to persons or property, or for incidental, contingent, special or consequential damages arising from the use of our product. Some states do not allow the exclusion or limitation of incidental or consequential damages, so the above limitation of exclusion may not apply to you. THIS WARRANTY IS EXPRESSLY IN LIEU OF ALL OTHER WARRANTIES, EXPRESS OR IMPLIED, INCLUDING THE WARRANTIES OF MERCHANTABILITY AND FITNESS.

To take advantage of this warranty, the product or part must be returned to us with transportation charges prepaid. Proof of purchase date and an explanation of the complaint must accompany the merchandise. If our inspection verifies the defect, we will either repair or replace the product at our election or we may elect to refund the purchase price if we cannot readily and quickly provide you with a replacement. We will return repaired products at our expense, but if we determine there is no defect, or that the defect resulted from causes not within the scope of our warranty, then you must bear the cost of returning the product.

This warranty gives you specific legal rights and you may also have other rights which vary from state to state.

BADLAND™

26677 Agoura Road • Calabasas, CA 91302 • 1-888-866-5797