

Owner's Manual & Safety Instructions

Save This Manual Keep this manual for the safety warnings and precautions, assembly, operating, inspection, maintenance and cleaning procedures. Write the product's serial number in the back of the manual near the assembly diagram (or month and year of purchase if product has no number). Keep this manual and the receipt in a safe and dry place for future reference.

21k

QUINN™

58594

HEAVY DUTY TILE CUTTER



Visit our website at: <http://www.harborfreight.com>
Email our technical support at: productsupport@harborfreight.com

When unpacking, make sure that the product is intact and undamaged. If any parts are missing or broken, please call 1-888-866-5797 as soon as possible.

Copyright© 2021 by Harbor Freight Tools®. All rights reserved.
No portion of this manual or any artwork contained herein may be reproduced in any shape or form without the express written consent of Harbor Freight Tools. Diagrams within this manual may not be drawn proportionally. Due to continuing improvements, actual product may differ slightly from the product described herein. Tools required for assembly and service may not be included.

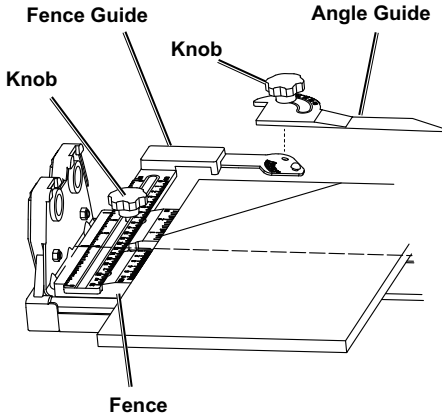
⚠WARNING

Read this material before using this product.
Failure to do so can result in serious injury.
SAVE THIS MANUAL.

Important Safety Information

1. Assemble only according to these instructions. Improper assembly can create hazards.
2. Wear ANSI-approved safety goggles and heavy-duty work gloves during use.
3. Keep work area clean and well lit.
4. Keep bystanders out of the area during use.
5. Do not use when tired or when under the influence of drugs or medication.
6. Before cutting, make sure the cutting bed is clean and clear of debris.
7. This product is not a toy. Do not allow children to play with or near this item.
8. Use as intended only. Do not use handle extension to increase force.
9. Inspect before every use; do not use if parts are loose or damaged.
10. Maintain product labels and nameplates. These carry important safety information. If unreadable or missing, contact Harbor Freight Tools for a replacement.

Assembly Instruction



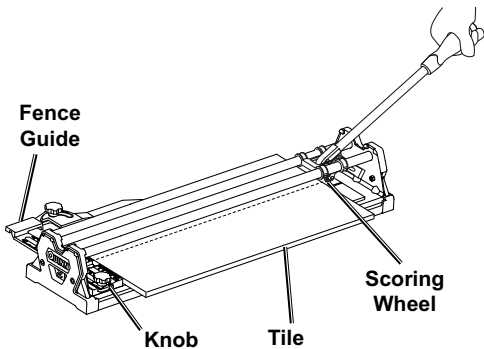
1. Place the Fence Guide above the Fence with the scale markings upward.
2. Secure in place with the Knob.
3. Place Angle Guide over the hole in Fence Guide.
4. Secure in place with the Knob.

Operating Instructions

- Make several practice cuts on scrap tile before attempting to make finish cuts.
- Before cutting, make sure the tile is seated straight on the cutter bed.
- Use a sturdy workbench, or place the machine on the floor to increase your leverage.
- Always score from the bottom to top in a full, continuous motion.
- Score the entire length of the tile.
- Use quick downward pressure to break the tile.

Making a Straight Cut

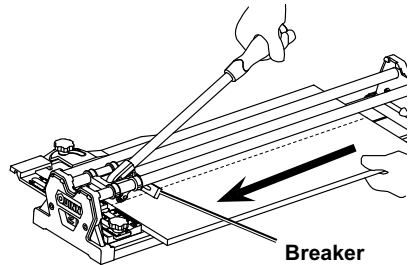
1. With glazed side up, mark the tile with a soft carpenter's pencil, a grease pencil or a washable marker.
2. Pull the Handle back so the Scoring Wheel is at the end of the Cutter.
3. Loosen the Knob and slide the Fence Guide out.
4. Place the tile against the Fence, with the marked cutting line directly under the Scoring Wheel.
5. Slide the Fence Guide against the edge of the tile and tighten the Knob.



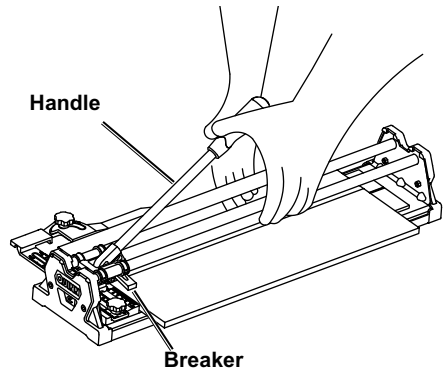
Note: After setting the Fence Guide, multiple cuts of the same size can be made without marking the other tiles.

Note: Good results require applying proper pressure and scoring the tile properly. This depends largely upon the operator and requires practice.

6. Place the Scoring Wheel on the end of the tile.
7. With medium pressure, push the Handle along the full length of the tile, until the Scoring Wheel rests in the slot on the Fence.



8. With the Scoring Wheel resting in the Fence, press down on the Handle to break tile.



9. Remove tile pieces from the Tile Cutter.

Making an Angled Cut

1. With glazed side up, mark the tile with a soft carpenter's pencil, a grease pencil or a washable marker.
 2. Pull the Handle back so the Scoring Wheel is at the end of the Cutter.
 3. Loosen the Knob and slide the Fence Guide out.
 4. Place the corner of the tile against the Fence, with the marked cutting line directly under the Scoring Wheel.
 5. Loosen the Knob and set the Angle Guide against the edge of the tile.
- Note:** Good results require applying proper pressure and scoring the tile properly. This depends largely upon the operator and requires practice.
6. Place the Scoring Wheel on the end of the tile.
 7. With medium pressure, push the Handle along the full length of the tile, until the Scoring Wheel rests in the slot on the Fence.
 8. With the Scoring Wheel resting in the Fence, press down on the Handle to break tile.
 9. Remove tile pieces from the Tile Cutter.

Parts List and Assembly Diagram

PLEASE READ THE FOLLOWING CAREFULLY

THE MANUFACTURER AND/OR DISTRIBUTOR HAS PROVIDED THE PARTS LIST AND ASSEMBLY DIAGRAM IN THIS MANUAL AS A REFERENCE TOOL ONLY. NEITHER THE MANUFACTURER OR DISTRIBUTOR MAKES ANY REPRESENTATION OR WARRANTY OF ANY KIND TO THE BUYER THAT HE OR SHE IS QUALIFIED TO MAKE ANY REPAIRS TO THE PRODUCT, OR THAT HE OR SHE IS QUALIFIED TO REPLACE ANY PARTS OF THE PRODUCT. IN FACT, THE MANUFACTURER AND/OR DISTRIBUTOR EXPRESSLY STATES THAT ALL REPAIRS AND PARTS REPLACEMENTS SHOULD BE UNDERTAKEN BY CERTIFIED AND LICENSED TECHNICIANS, AND NOT BY THE BUYER. THE BUYER ASSUMES ALL RISK AND LIABILITY ARISING OUT OF HIS OR HER REPAIRS TO THE ORIGINAL PRODUCT OR REPLACEMENT PARTS THERETO, OR ARISING OUT OF HIS OR HER INSTALLATION OF REPLACEMENT PARTS THERETO.

Parts List

Part	Description	Quantity
1	Base	1
2	Frame Cover	2
3	M6 x 12mm Screw	4
4	Try Square Arm	1
5	Knob	2
6	Limit Stop Collar	2
7	M8 x 32mm Screw	1
8	Sliding Carriage	1
9	M8 Nut	1
10	M5 Nut	2

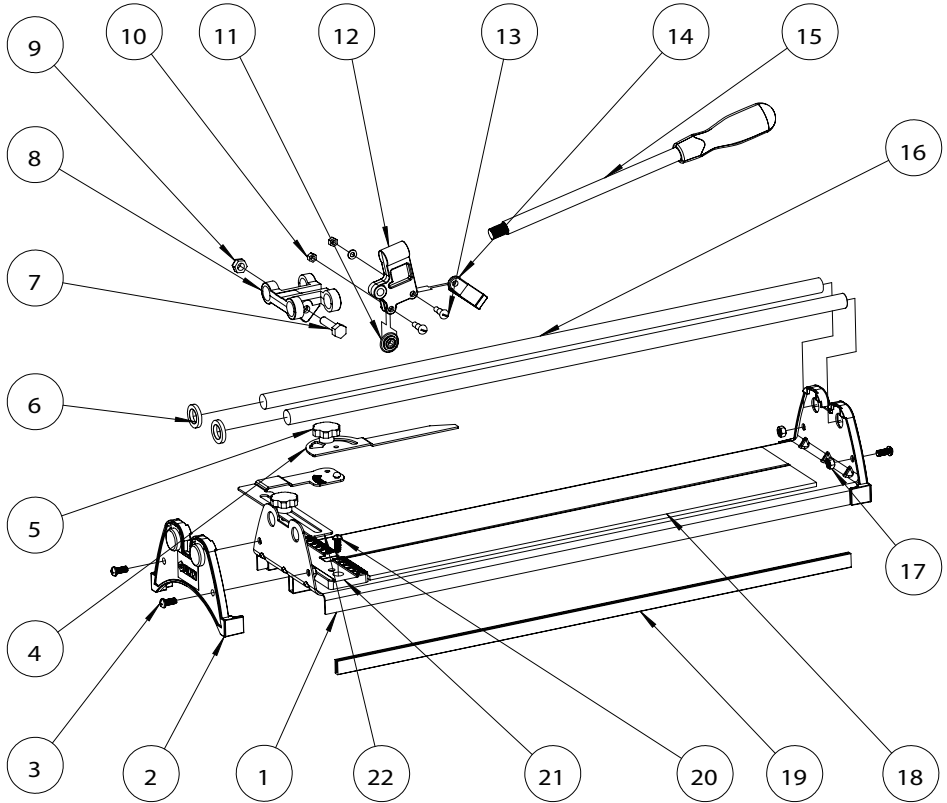
11	22 x 6 x 6 Scoring Wheel	1
12	Scoring Wheel Holder	1
13	M5 x 18mm Screw	2
14	Breaker	1
15	Handle	1
16	Guide Bar	2
17	M6 Nut	4
18	EVA Pad	2
19	Anti-Slip Rubber	2
20	M6 x 12mm Screw	2
21	Fence	1
22	Try Square Arm	1

Record Product's Serial Number Here: _____

Note: If product has no serial number, record month and year of purchase instead.

Note: Some parts are listed and shown for illustration purposes only, and are not available individually as replacement parts. Specify UPC 193175442017 when ordering parts.

Assembly Diagram



Limited 90 Day Warranty

Harbor Freight Tools Co. makes every effort to assure that its products meet high quality and durability standards, and warrants to the original purchaser that this product is free from defects in materials and workmanship for the period of 90 days from the date of purchase. This warranty does not apply to damage due directly or indirectly, to misuse, abuse, negligence or accidents, repairs or alterations outside our facilities, criminal activity, improper installation, normal wear and tear, or to lack of maintenance. We shall in no event be liable for death, injuries to persons or property, or for incidental, contingent, special or consequential damages arising from the use of our product. Some states do not allow the exclusion or limitation of incidental or consequential damages, so the above limitation of exclusion may not apply to you. THIS WARRANTY IS EXPRESSLY IN LIEU OF ALL OTHER WARRANTIES, EXPRESS OR IMPLIED, INCLUDING THE WARRANTIES OF MERCHANTABILITY AND FITNESS.

To take advantage of this warranty, the product or part must be returned to us with transportation charges prepaid. Proof of purchase date and an explanation of the complaint must accompany the merchandise. If our inspection verifies the defect, we will either repair or replace the product at our election or we may elect to refund the purchase price if we cannot readily and quickly provide you with a replacement. We will return repaired products at our expense, but if we determine there is no defect, or that the defect resulted from causes not within the scope of our warranty, then you must bear the cost of returning the product.

This warranty gives you specific legal rights and you may also have other rights which vary from state to state.

