

Owner's Manual & Safety Instructions

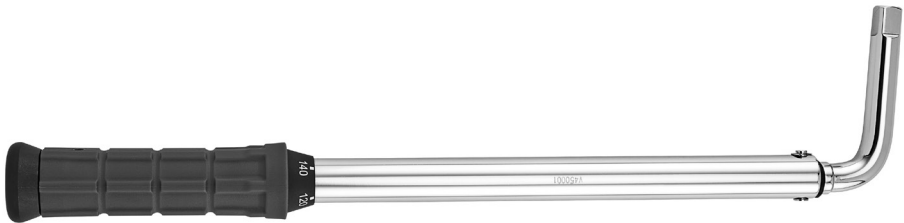
Save This Manual Keep this manual for the safety warnings and precautions, assembly, operating, inspection, maintenance and cleaning procedures. Write the product's serial number in the back of the manual near the assembly diagram (or month and year of purchase if product has no number). Keep this manual and the receipt in a safe and dry place for future reference.

23a

QUINN™

58628

1/2" Drive Preset Lugnut Torque Wrench



Visit our website at: <http://www.harborfreight.com>
Email our technical support at: productsupport@harborfreight.com

When unpacking, make sure that the product is intact and undamaged. If any parts are missing or broken, please call 1-888-866-5797 as soon as possible.

Copyright© 2021 by Harbor Freight Tools®. All rights reserved.
No portion of this manual or any artwork contained herein may be reproduced in any shape or form without the express written consent of Harbor Freight Tools. Diagrams within this manual may not be drawn proportionally. Due to continuing improvements, actual product may differ slightly from the product described herein.
Tools required for assembly and service may not be included.

⚠WARNING

Read this material before using this product.
Failure to do so can result in serious injury.
SAVE THIS MANUAL.

Specifications

Torque Range	80 - 160 ft-lb
Presets	5 Presets (80, 100, 120, 140, and 160 ft-lb.)*
Drive	1/2"
Accuracy	± 4%

***Note:** User is unable to achieve torque values between these preset values.

Important Safety Information



WARNING Read all safety warnings and instructions.

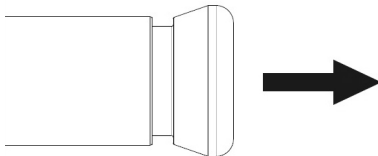
Failure to follow the warnings and instructions may result in injury.

Save all warnings and instructions for future reference.

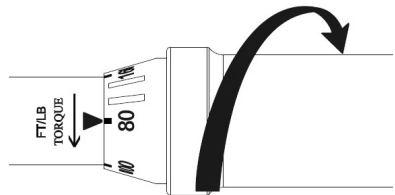
1. Wear ANSI-approved safety goggles during use.
2. Do not use for loosening fasteners.
3. Use only within rated torque range.
4. Use as intended only. Do not use as hammer or pry bar.
5. Do not use handle extension to increase force. Do not use as a breaker bar.
6. Do not use a Torque Wrench that has been dropped. Have it tested before putting back into use.
7. Have the Torque Wrench calibrated and serviced only by a qualified technician.
8. Inspect before every use; do not use if damaged or if parts are loose.
9. Keep away from children.
10. Use only sockets with the correct drive and rated to at least the torque that will be applied to it.
11. The warnings, cautions, and instructions in this instruction manual cannot cover all possible conditions and situations that may occur. It must be understood by the operator that common sense and caution are factors which cannot be built into this product, but must be supplied by the operator.

Operating Instructions

1. Pull back cover outwards to unlock Torque Handle.



2. Hold the Body of the Wrench and turn Handle clockwise or counterclockwise to set the desired preset torque.



3. Push the back cover inward to lock Torque Handle.

Note: Failure to relock Torque Handle before using Torque Wrench may result in damage to inner mechanism.

4. Apply steady force to the center of the Handle, and stop applying force when you hear a "click" sound.

Maintenance and Servicing



Procedures not specifically explained in this manual must be performed only by a qualified technician.

CAUTION

TO PREVENT INJURY FROM TOOL FAILURE:

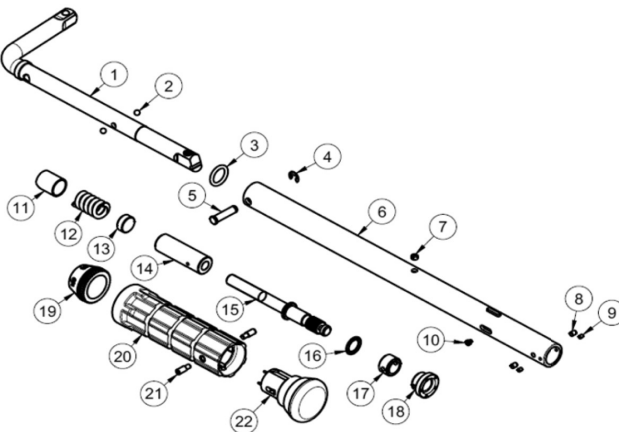
Do not use damaged equipment. If abnormal noise or vibration occurs, have the problem corrected before further use.

1. **BEFORE EACH USE**, inspect the general condition of the tool. Check for:
 - loose hardware,
 - misalignment or binding of moving parts,
 - cracked or broken parts, and
 - any other condition that may affect its safe operation.
2. **AFTER USE:**
 - Pull back Lock Ring and set Wrench to the lowest torque setting.
 - Wipe Wrench with a clean cloth. Do not use liquid on the cloth or immerse wrench in liquid.
3. **EVERY 6 MONTHS**, have the Torque Wrench calibrated and serviced by a qualified technician.

Parts List and Diagram

Part	Description	Qty
1	Torque Beam Module	1
2	Steel Ball	2
3	O-Ring	1
4	E Spring	1
5	Pin	1
6	Tube Module	1
7	Side Screw	1
8	Pin	2
9	Screw	2
10	Screw	1
11	Sound Seat Set	1

Part	Description	Qty
12	Torque Spring	1
13	Support Seat	1
14	Black Tube	1
15	Propulsive Post	1
16	Bearing Ring	1
17	Propulsive Ring	1
18	Positioning Ring	1
19	Index Ring	1
20	Handle	1
21	Handle Screw	1
22	Push Lock Module	1



PLEASE READ THE FOLLOWING CAREFULLY

THE MANUFACTURER AND/OR DISTRIBUTOR HAS PROVIDED THE PARTS DIAGRAM IN THIS MANUAL AS A REFERENCE TOOL ONLY. NEITHER THE MANUFACTURER NOR DISTRIBUTOR MAKES ANY REPRESENTATION OR WARRANTY OF ANY KIND TO THE BUYER THAT HE OR SHE IS QUALIFIED TO MAKE ANY REPAIRS TO THE PRODUCT OR THAT HE OR SHE IS QUALIFIED TO REPLACE ANY PARTS OF THE PRODUCT. IN FACT, THE MANUFACTURER AND/OR DISTRIBUTOR EXPRESSLY STATES THAT ALL REPAIRS AND PARTS REPLACEMENTS SHOULD BE UNDERTAKEN BY CERTIFIED AND LICENSED TECHNICIANS AND NOT BY THE BUYER. THE BUYER ASSUMES ALL RISK AND LIABILITY ARISING OUT OF HIS OR HER REPAIRS TO THE ORIGINAL PRODUCT OR REPLACEMENT PARTS THERETO, OR ARISING OUT OF HIS OR HER INSTALLATION OF REPLACEMENT PARTS THERETO.

Record Product's Serial Number Here:

Note: If product has no serial number, record month and year of purchase instead.

Note: Some parts are listed and shown for illustration purposes only, and are not available individually as replacement parts. Specify UPC 193175442536 when ordering parts.

LIFETIME WARRANTY

Harbor Freight Tools warrants to the original purchaser that this QUINN™ torque wrench shall be free from defects in materials and workmanship (excluding calibration) for its useful life.

If your QUINN™ torque wrench does not perform in accordance with this warranty, Harbor Freight Tools will, at its option and expense, repair or replace (or elect to refund the purchase price if we cannot repair or replace), your QUINN™ torque wrench, which shall be your sole and exclusive remedy. To obtain warranty service, QUINN™ products must be returned with proof of purchase to a Harbor Freight Tools retail store or returned by mail after contacting Harbor Freight Tools Product Support at 1-888-866-5797 and receiving a return authorization.

This warranty excludes normal wear and tear and does not apply to products subjected to misuse, use or operation other than for the intended purpose or not in accordance with the product manual, abuse, accident, modification or alteration, improper storage, neglect, or lack of maintenance (including failure to obtain professional recalibration of the QUINN™ torque wrench every six months). This warranty is in lieu of all other warranties. Harbor Freight Tools is not liable for incidental, indirect, special, consequential, or punitive damages or costs arising from the use of this product. Some states do not allow the exclusion or limitation of incidental or consequential damages, so the above limitation may not apply to you. This warranty gives you specific legal rights, and you may also have other rights which vary from state to state.

QUINN™