

Owner's Manual & Safety Instructions

Save This Manual Keep this manual for the safety warnings and precautions, assembly, operating, inspection, maintenance and cleaning procedures. Write the product's serial number in the back of the manual near the assembly diagram (or month and year of purchase if product has no number). Keep this manual and the receipt in a safe and dry place for future reference.

23a

PITTSBURGH®

PORTABLE TIRE CHANGER



Visit our website at: <http://www.harborfreight.com>
Email our technical support at: productsupport@harborfreight.com

When unpacking, make sure that the product is intact and undamaged. If any parts are missing or broken, please call 1-888-866-5797 as soon as possible.

Copyright© 2022 by Harbor Freight Tools®. All rights reserved.
No portion of this manual or any artwork contained herein may be reproduced in any shape or form without the express written consent of Harbor Freight Tools. Diagrams within this manual may not be drawn proportionally. Due to continuing improvements, actual product may differ slightly from the product described herein. Tools required for assembly and service may not be included.

⚠WARNING

Read this material before using this product.
Failure to do so can result in serious injury.
SAVE THIS MANUAL.

Specifications

Tire Capacity	All tires from 8 IN. to Light Truck Tires (8 IN. x 16 IN.) Flotation Tires: Up to 12.5L16
Includes	Bead Breaker Handle. Mount/Demount Bar.

Important Safety Information

1. **Do not exceed max. tire capacities.** Do not use on standard tires exceeding 16" or on flotation tire exceeding size 12.5L16.
2. **CAUTION!** Do not use on tires with high-end rims. Tire removal and installation can result in scratches and slight marring on rims.
3. Wear ANSI-approved safety goggles and heavy-duty work gloves during assembly, mounting and use.
4. Do not modify Tire Changer to perform tasks for which it was not designed.
5. Use only with accessories included with the Tire Changer.
6. Do not use without mounting to floor. Mount only to a secure, level surface able to support weight of Manual Tire Changer and tire assembly.
7. Verify that mounting surface has no hidden utility lines before drilling or driving screws.
8. Deflate tire before use. Keep tire's valve stem uncovered during use to allow any remaining air to flow out of tire.
9. Lubricate Breaker Handle when removing tire from rim; failure do so can lead to tire damage.
10. Keep work area clean and well lit.
11. Keep bystanders out of the area during use.
12. Do not use when tired or when under the influence of drugs, medication or alcohol.
13. This product is not a toy. Do not allow children to play with or near this item.
14. Inspect before every use; do not use if parts are loose or damaged.
15. Maintain product labels and nameplates. These carry important safety information. If unreadable or missing, contact Harbor Freight Tools for a replacement.

Assembly/Mounting Instructions



Read the **ENTIRE IMPORTANT SAFETY INFORMATION** section at the beginning of this document including all text under subheadings therein before set up or use of this product.

3. Fasten Center Post and Post Base together using Bolts (6), Washers (11) and Nuts (12).

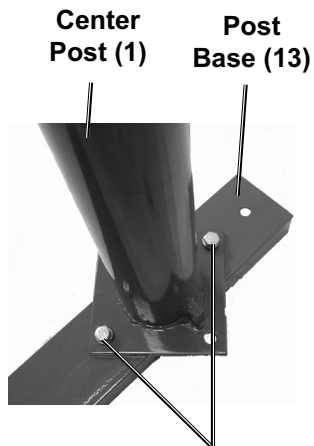
Note: Tire Changer requires assembly after unpacking.

1. On a secure, level surface, place bottom of Center Post (1) diagonally across middle of Post Base (13).
2. Align Center Post with Post Base so that Center Post bracket faces longer end of Post Base with Mounting Tab.

Bracket

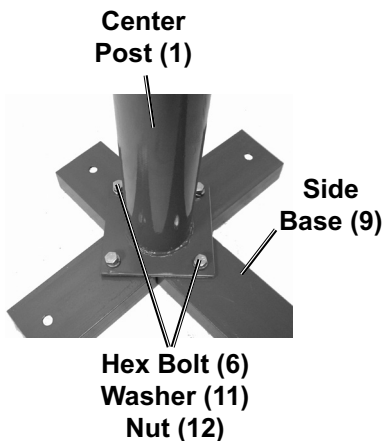


Mounting Tab



**Hex Bolt (6)
Washer (11)
Nut (12)**

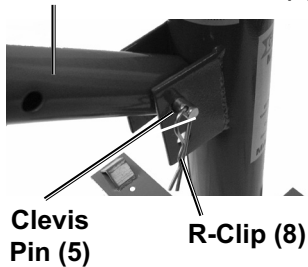
4. Set each of Side Bases (9) along either side of Post Base until holes align.
5. Fasten together using the Hex Bolts (6), Washers (11), and Nuts (12).



NOTE: Floor surface should be at least 4" deep.

6. Mount assembled base to selected floor surface (such as a wood pallet or concrete floor) using 7/16" mounting holes at ends of Side Bases and Post Base.
7. Place Bead Breaker Handle (7) into bracket on side of Center Post until hole on Handle's end aligns with top or bottom holes of the bracket (depending on the size of the tire.)
8. Slide a Clevis Pin (5) through bracket and Bead Breaker Handle, securing it using R-Clip (8).

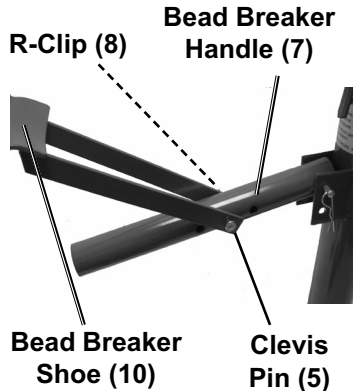
Bead Breaker Handle (7)



9. Slide end slots of Bead Breaker Shoe (10) over mounting holes along middle of Bead Breaker Handle.

Note: Closest hole to Center Post is for smaller tires.

10. Align with end or middle holes (depending on which tire size).
11. Secure with Clevis Pin (5) and R-Clip (8).



Operation

Breaking Tire Bead

NOTE: This Tire Changer works best with standard sized tires only.

1. Deflate tire.
2. Apply bead oil (not included) to tire bead.
3. Set Tire down on longer end of Post Base.
4. Position tire so that rim is set against mounting tab, which will keep tire in place.
5. Set Bead Breaker Shoe against edge of tire rim.
6. Insert Mount/Demount Bar into Bead Breaker Handle.
7. Push down on Bead Breaker Handle, allowing Bead Breaker Shoe to push tire bead off of rim.



8. Lift Bead Breaker Handle up and rotate tire.
9. Repeat step 7.
10. Lift Bead Breaker Handle up, flip tire over and reposition tire against mounting tab.
11. Repeat steps 2-8.
12. Raise Bead Breaker Handle.
13. Remove tire from Post Base.
14. Remove Post Cap using flat end of Mount/Demount Bar.
15. Remove Slider.

16. Remove Washer.
17. Set tire onto Center Post with Lug Pin inserted through a lug nut hole and into the slot on the circular base the tire is resting on.
18. Place Washer onto Center Post with Lug Pin going into slot.
19. Place Slider onto Center Post with Lug Pin inside tab.
20. Thread Post Cap onto Center Post.
21. Tighten Post Cap with flat end of Mount/Demount Bar.
22. Remove Mount/Demount Bar.
23. Place Mount/Demount end against tire bead.
24. Push down on Mount/Demount Bar, forcing bead away from rim.

NOTE: You may need to hold onto Post Cap with your free hand for added leverage.

25. Slide Mount/Demount Bar down and use Post Cap as leverage to pull Bar around rim separating tire bead from rim.



26. Once bead on upper side of tire is separated from rim, pull tire up with free hand and push Bar down so it is against bead on lower tire and upper rim.
27. Repeat step 25.
28. Remove tire from rim.

29. Remove post Cap using flat end of Mount/Demount Bar.
30. Remove Slider.
31. Remove Washer.
32. Remove Rim.

Mounting Tire Onto Rim

WARNING! TO PREVENT SERIOUS INJURY: Do not use the bar to hammer on the side of the tire during mounting.

1. Set tire onto Center Post with Lug Pin inserted through a lug nut hole and into the slot on the circular base the tire is resting on.
2. Place Washer onto Center Post with Lug Pin going into slot.
3. Place Slider onto Center Post with Lug Pin inside tab.
4. Thread Post Cap onto Center Post.
5. Tighten Post Cap with flat end of Mount/Demount Bar.
6. Remove Mount/Demount Bar.
7. Apply bead oil (not included) to upper and lower tire bead.
8. Set tire on rim in the correct position.

9. Push down on opposite ends of tire to install lower tire bead onto rim.
10. Place flat end of Mounting/ Demounting Bar through tire.
11. Push down on tire with free hand as you work lower tire bead onto upper rim.
12. If needed push Mounting/ Demounting Bar along Center Post for added leverage.
13. Remove Mounting/Demounting Bar and switch ends, so that hook side is pressed against rim.
14. Push Bar down so that hook end wedges bead under rim.
15. Push Mounting/Demounting Bar along Center Post for added leverage.
16. Continue to work around rim until upper tire bead mounts over rim.

WARNING! TO PREVENT SERIOUS INJURY: Do not over-inflate tire.

17. Inflate tire to proper PSI.
18. Check for leaks.
19. Have tire balanced by a qualified automotive technician.

Maintenance

1. After each use, wipe any excess bead oil off of Tire Changer.
2. Regularly inspect Tire Changer to ensure that all connections are secure.

PLEASE READ THE FOLLOWING CAREFULLY

THE MANUFACTURER AND/OR DISTRIBUTOR HAS PROVIDED THE PARTS LIST AND ASSEMBLY DIAGRAM IN THIS MANUAL AS A REFERENCE TOOL ONLY. NEITHER THE MANUFACTURER OR DISTRIBUTOR MAKES ANY REPRESENTATION OR WARRANTY OF ANY KIND TO THE BUYER THAT HE OR SHE IS QUALIFIED TO MAKE ANY REPAIRS TO THE PRODUCT, OR THAT HE OR SHE IS QUALIFIED TO REPLACE ANY PARTS OF THE PRODUCT. IN FACT, THE MANUFACTURER AND/OR DISTRIBUTOR EXPRESSLY STATES THAT ALL REPAIRS AND PARTS REPLACEMENTS SHOULD BE UNDERTAKEN BY CERTIFIED AND LICENSED TECHNICIANS, AND NOT BY THE BUYER. THE BUYER ASSUMES ALL RISK AND LIABILITY ARISING OUT OF HIS OR HER REPAIRS TO THE ORIGINAL PRODUCT OR REPLACEMENT PARTS THERETO, OR ARISING OUT OF HIS OR HER INSTALLATION OF REPLACEMENT PARTS THERETO.

Parts List and Diagram

Parts List

Part	Description	Qty.
1	Center Post	1
2	Post Cap	1
3	Slider	1
4	Washer	1
5	Clevis Pin	2
6	Bolt	4
7	Bead Breaker Handle	1

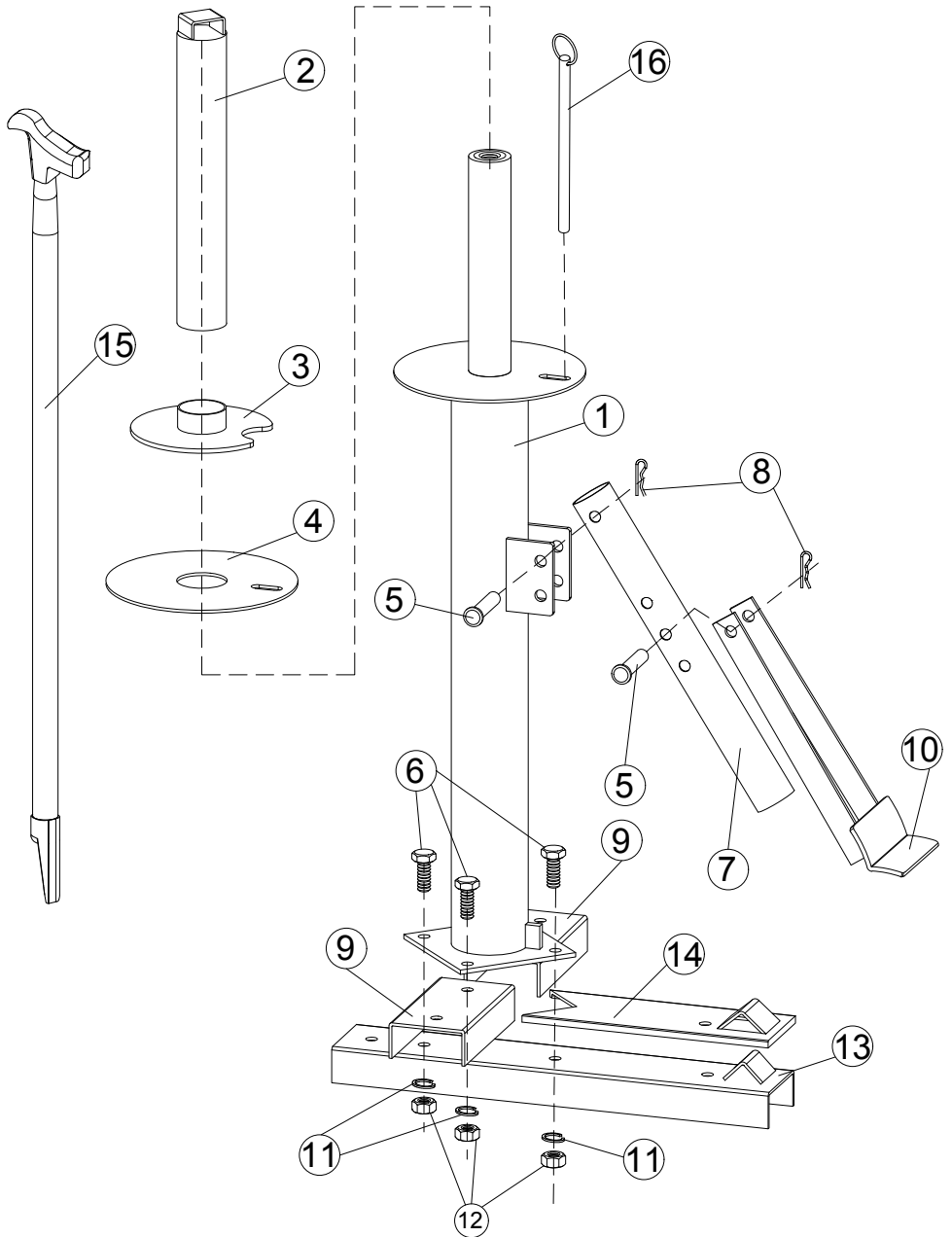
8	R-Clip	2
9	Side Base	2
10	Bead Breaker Shoe	1
11	Lock Washer	4
12	Nut	4
13	Post Base	1
14	Mounting Tab	1
15	Mount/Demount Bar	1
16	Lug Pin	1

Record Product's Serial Number Here: _____

Note: If product has no serial number, record month and year of purchase instead.

Note: Some parts are listed and shown for illustration purposes only, and are not available individually as replacement parts. Specify UPC 193175445476 when ordering parts.

Assembly Diagram



Limited 90 Day Warranty

Harbor Freight Tools Co. makes every effort to assure that its products meet high quality and durability standards, and warrants to the original purchaser that this product is free from defects in materials and workmanship for the period of 90 days from the date of purchase. This warranty does not apply to damage due directly or indirectly, to misuse, abuse, negligence or accidents, repairs or alterations outside our facilities, criminal activity, improper installation, normal wear and tear, or to lack of maintenance. We shall in no event be liable for death, injuries to persons or property, or for incidental, contingent, special or consequential damages arising from the use of our product. Some states do not allow the exclusion or limitation of incidental or consequential damages, so the above limitation of exclusion may not apply to you. THIS WARRANTY IS EXPRESSLY IN LIEU OF ALL OTHER WARRANTIES, EXPRESS OR IMPLIED, INCLUDING THE WARRANTIES OF MERCHANTABILITY AND FITNESS.

To take advantage of this warranty, the product or part must be returned to us with transportation charges prepaid. Proof of purchase date and an explanation of the complaint must accompany the merchandise. If our inspection verifies the defect, we will either repair or replace the product at our election or we may elect to refund the purchase price if we cannot readily and quickly provide you with a replacement. We will return repaired products at our expense, but if we determine there is no defect, or that the defect resulted from causes not within the scope of our warranty, then you must bear the cost of returning the product.

This warranty gives you specific legal rights and you may also have other rights which vary from state to state.

PITTSBURGH[®]

26677 Agoura Road • Calabasas, CA 91302 • 1-888-866-5797