

Owner's Manual & Safety Instructions

Save This Manual Keep this manual for the safety warnings and precautions, assembly, operating, inspection, maintenance and cleaning procedures. Write the product's serial number in the back of the manual near the assembly diagram (or month and year of purchase if product has no number). Keep this manual and the receipt in a safe and dry place for future reference.

24g

PITTSBURGH[®] MOTORCYCLE

58770

MOTORCYCLE TIRE CHANGE STAND WITH BEAD BREAKER



Visit our website at: <http://www.harborfreight.com>
Email our technical support at: productsupport@harborfreight.com

When unpacking, make sure that the product is intact and undamaged. If any parts are missing or broken, please call 1-888-866-5797 as soon as possible.

Copyright© 2021 by Harbor Freight Tools®. All rights reserved.
No portion of this manual or any artwork contained herein may be reproduced in any shape or form without the express written consent of Harbor Freight Tools. Diagrams within this manual may not be drawn proportionally. Due to continuing improvements, actual product may differ slightly from the product described herein. Tools required for assembly and service may not be included.

⚠ WARNING

Read this material before using this product.
Failure to do so can result in serious injury.
SAVE THIS MANUAL.

IMPORTANT SAFETY INFORMATION

WARNING

Read all safety warnings and instructions.

Failure to follow the warnings and instructions may result in serious injury or death.

Save all warnings and instructions for future reference.

General Safety Warnings

1. Deflate tire completely before removing.
2. Do not exceed rated rim capacity.
3. Wear ANSI-approved safety goggles and heavy-duty work gloves during assembly and use.
4. Read manual before use.
5. Inspect before every use; do not use if parts loose or damaged.
6. Do not remove automobile tires with this product. For use with motorcycle tires only.
7. **Keep the work area clean and well lit.** Cluttered and dark areas increase the risks of injury to persons.
8. **Keep bystanders, children, and visitors away while operating the tool.** Distractions are able to result in the loss of control of the tool.
9. **Stay alert. Watch what you are doing and use common sense when operating the tool.**
10. **Do not use tool while tired or under the influence of drugs, alcohol, or medication.**
A moment of inattention while operating the tool increases the risk of injury to persons.
11. **Do not overreach. Keep proper footing and balance at all times.**
Proper footing and balance enables better control of the tool in unexpected situations.
12. Assemble only according to these instructions. Improper assembly can create hazards.
13. This product is not a toy. Do not allow children to play with or near this item.
14. Use as intended only.
15. Maintain product labels and nameplates. These carry important safety information. If unreadable or missing, contact Harbor Freight Tools for a replacement.
16. The warnings, precautions, and instructions discussed in this instruction manual cannot cover all possible conditions and situations that may occur. It must be understood by the operator that common sense and caution are factors which cannot be built into this product, but must be supplied by the operator.



SAVE THESE INSTRUCTIONS.

Specifications

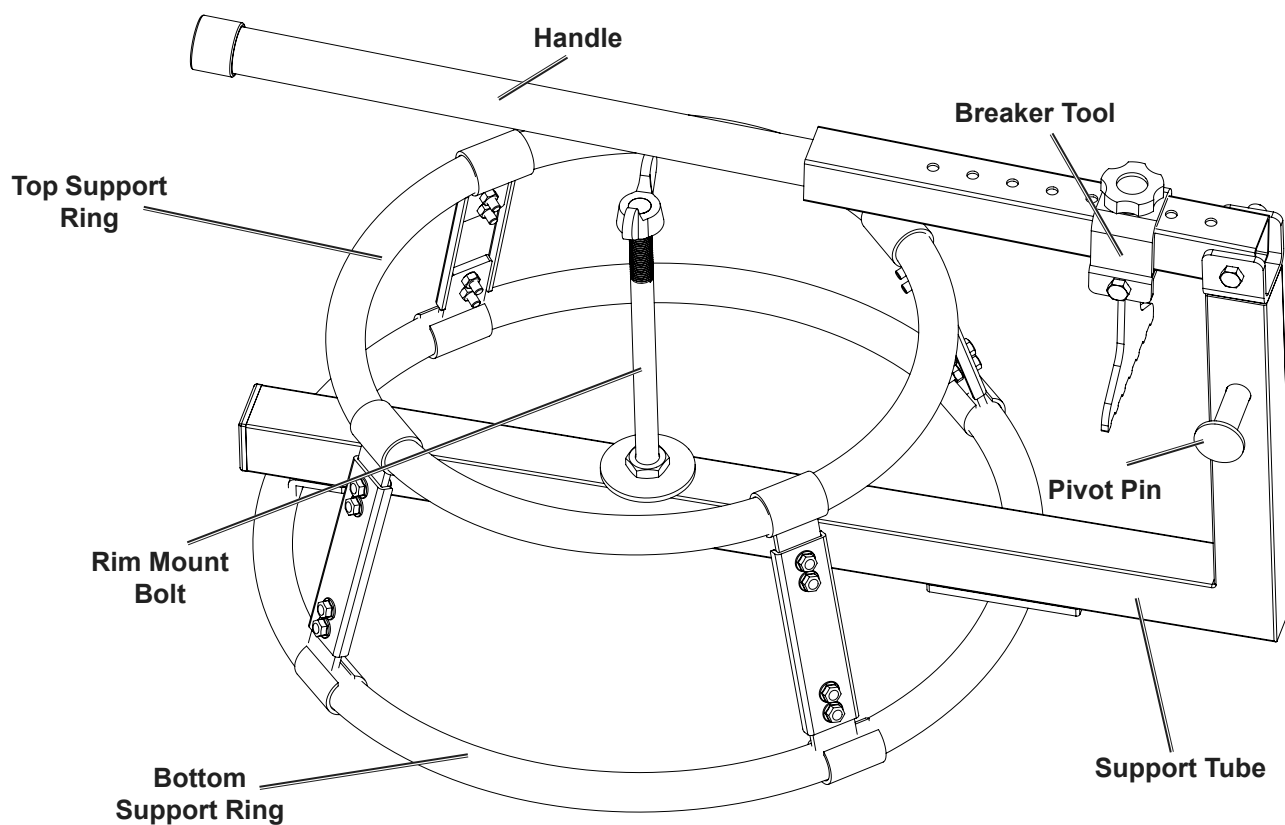
Rim Capacity	16" - 21"
Recommended Applications	Dirt Bike: Front & Rear Street Bike: Less than 6.5" wide

Setup - Before Use:



Read the **ENTIRE** IMPORTANT SAFETY INFORMATION section at the beginning of this document including all text under subheadings therein before set up or use of this product.

Components



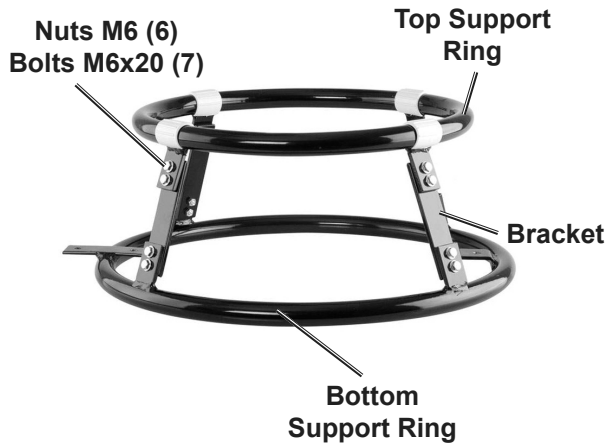
PITTSBURGH[®] MOTORCYCLE

Assembly Instructions



Read the **ENTIRE IMPORTANT SAFETY INFORMATION** section at the beginning of this document including all text under subheadings therein before set up or use of this product.

1. Connect Top Support Ring to Bottom Support Ring using four Brackets, sixteen Bolts M6x20 (7), and sixteen Nuts M6 (6). Tighten securely.



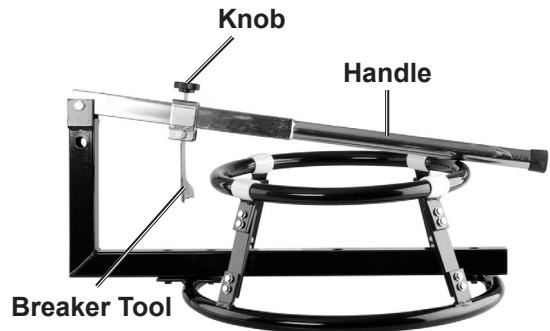
2. Attach Support Tube to the Bottom Support Ring. Use three Hex Screws M10x20 (4) to secure Support Tube to tabs on Bottom Support Ring.



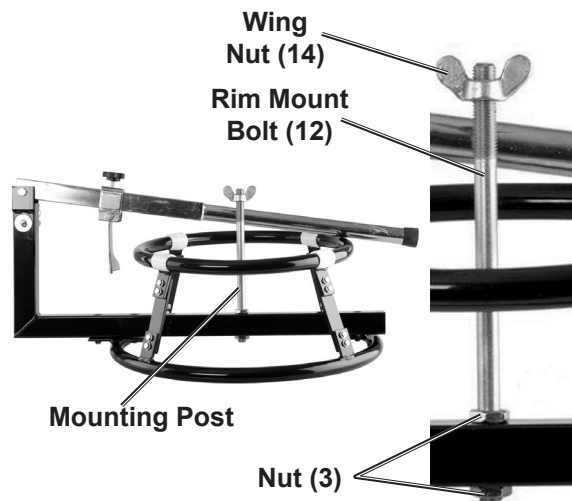
3. Attach Handle to Support Tube using one Hex Screw (18), Washer (19), and Lock Nut (20). Do not overtighten.
4. Slide the Pin (22) into the Support Tube and secure with R-Clip (23).



5. Slide Breaker Tool onto the Handle. Secure with Knob.



6. Thread one Nut (3) all the way onto Rim Mount Bolt (12).
7. Slide Bolt through hole in Support Tube.
8. Thread one Nut (3) to bottom of Bolt.
9. Thread Wing Nut (14) to top of Bolt.



Operation



Read the **ENTIRE IMPORTANT SAFETY INFORMATION** section at the beginning of this document including all text under subheadings therein before set up or use of this product.

WARNING! TO PREVENT SERIOUS INJURY:

Tire is under extreme pressure. Maintain firm grip on core and remover to prevent pressure from propelling them and causing injury. Make sure tire is completely deflated before removing.

1. Before breaking bead, remove valve cap. Deflate tire by **removing valve core** with valve core remover (not included). For tubed tires, remove valve nut.
2. If wheel has beadlocks installed, loosen before installing wheel on tire stand.

Note: Use tire lubricant (not included) as needed.

3. Place the tire on the Rim Mount Bolt and secure with the Wing Nut.



4. Adjust the Breaker Tool along the Handle so that the Plate aligns with the edge of the Rim. Tighten the Knob to secure Breaker Tool position.
5. Make sure Breaker Tool is properly aligned. Place edge of Plate against bead and rim.

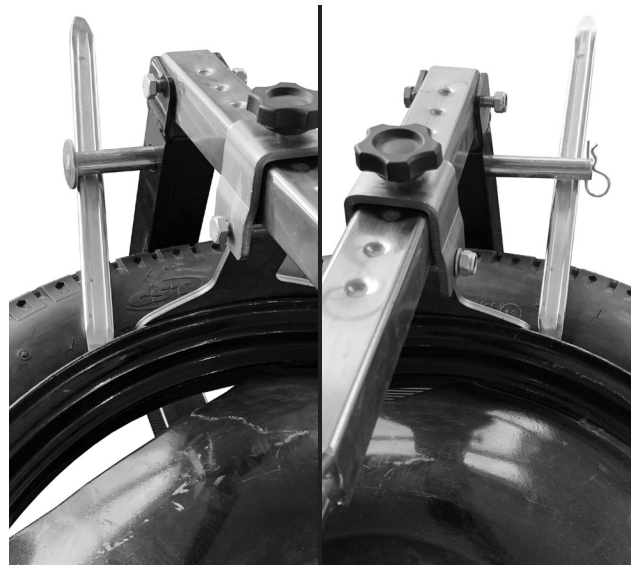


6. Push down on Handle, forcing bead off the rim. Loosen Wing Nut and rotate the tire to repeat in several locations until bead is broken.



WARNING! TO PREVENT SERIOUS INJURY: Make sure R-Clip is in place through Pivot Pin to prevent Pivot Pin from slipping out of the Support Tube.

7. Slide Pivot Pin to either side of Handle and use as a fulcrum for a crowbar (sold separately) to pry the tire rubber from the metal rim as necessary.



8. After bead is broken, turn tire over and break bead on other side.

Maintenance



Procedures not specifically explained in this manual must be performed only by a qualified technician.

!WARNING

TO PREVENT SERIOUS INJURY FROM TOOL FAILURE:
Do not use damaged equipment.

Maintenance and Cleaning

1. **BEFORE EACH USE**, inspect the general condition of the Motorcycle Tire Changer Attachment. Check for:
 - loose hardware,
 - misalignment or binding of moving parts,
 - cracked or broken parts, and
 - any other condition that may affect its safe operation.
2. **AFTER USE**, wipe external surfaces of Motorcycle Tire Changer Attachment with clean cloth.
3. Store indoors, out of the reach of children.

Record Product's Serial Number Here: _____

Note: If product has no serial number, record month and year of purchase instead.

Note: Some parts are listed and shown for illustration purposes only, and are not available individually as replacement parts. Reference UPC 193175446404.

PLEASE READ THE FOLLOWING CAREFULLY

THE MANUFACTURER AND/OR DISTRIBUTOR HAS PROVIDED THE PARTS LIST AND ASSEMBLY DIAGRAM IN THIS DOCUMENT AS A REFERENCE TOOL ONLY. NEITHER THE MANUFACTURER OR DISTRIBUTOR MAKES ANY REPRESENTATION OR WARRANTY OF ANY KIND TO THE BUYER THAT HE OR SHE IS QUALIFIED TO MAKE ANY REPAIRS TO THE PRODUCT, OR THAT HE OR SHE IS QUALIFIED TO REPLACE ANY PARTS OF THE PRODUCT. IN FACT, THE MANUFACTURER AND/OR DISTRIBUTOR EXPRESSLY STATES THAT ALL REPAIRS AND PARTS REPLACEMENTS SHOULD BE UNDERTAKEN BY CERTIFIED AND LICENSED TECHNICIANS, AND NOT BY THE BUYER. THE BUYER ASSUMES ALL RISK AND LIABILITY ARISING OUT OF HIS OR HER REPAIRS TO THE ORIGINAL PRODUCT OR REPLACEMENT PARTS THERETO, OR ARISING OUT OF HIS OR HER INSTALLATION OF REPLACEMENT PARTS THERETO.

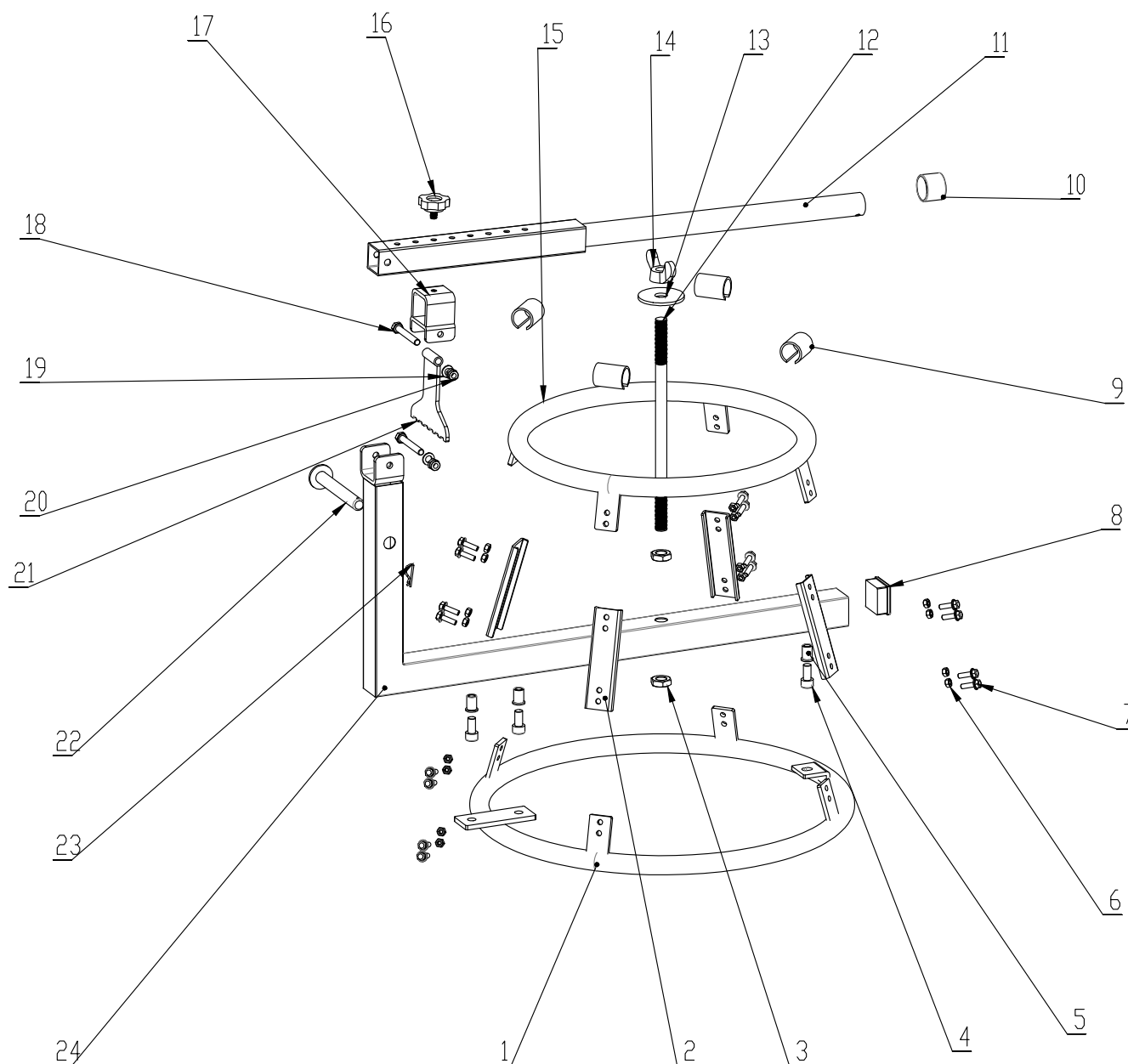
Parts List and Diagram

Parts List

Part	Description	Qty
1	Bottom Support Ring	1
2	Bracket	4
3	Nut M16	2
4	Hex Screw M10x20	3
5	Sleeve, M10x18	3
6	Nut M6	16
7	Bolt, M6x20	16
8	End Cap	2
9	Ring	4
10	Rubber Sleeve	1
11	Handle	1
12	Rim Mount Bolt	1

Part	Description	Qty
13	Washer	1
14	Wing Nut M16	1
15	Top Support Ring	1
16	Knob	1
17	Connection Bracket	1
18	Hex Screw M8x60	2
19	Washer M8	2
20	Lock Nut M8	2
21	Breaker Tool	1
22	Pivot Pin	1
23	R-Clip	1
24	Support Tube	1

Assembly Diagram



Limited 90 Day Warranty

Harbor Freight Tools Co. makes every effort to assure that its products meet high quality and durability standards, and warrants to the original purchaser that this product is free from defects in materials and workmanship for the period of 90 days from the date of purchase. This warranty does not apply to damage due directly or indirectly, to misuse, abuse, negligence or accidents, repairs or alterations outside our facilities, criminal activity, improper installation, normal wear and tear, or to lack of maintenance. We shall in no event be liable for death, injuries to persons or property, or for incidental, contingent, special or consequential damages arising from the use of our product. Some states do not allow the exclusion or limitation of incidental or consequential damages, so the above limitation of exclusion may not apply to you. THIS WARRANTY IS EXPRESSLY IN LIEU OF ALL OTHER WARRANTIES, EXPRESS OR IMPLIED, INCLUDING THE WARRANTIES OF MERCHANTABILITY AND FITNESS.

To take advantage of this warranty, the product or part must be returned to us with transportation charges prepaid. Proof of purchase date and an explanation of the complaint must accompany the merchandise. If our inspection verifies the defect, we will either repair or replace the product at our election or we may elect to refund the purchase price if we cannot readily and quickly provide you with a replacement. We will return repaired products at our expense, but if we determine there is no defect, or that the defect resulted from causes not within the scope of our warranty, then you must bear the cost of returning the product.

This warranty gives you specific legal rights and you may also have other rights which vary from state to state.

PITTSBURGH[®] MOTORCYCLE

26677 Agoura Road • Calabasas, CA 91302 • 1-888-866-5797