

Owner's Manual & Safety Instructions

Save This Manual Keep this manual for the safety warnings and precautions, assembly, operating, inspection, maintenance and cleaning procedures. Write the product's serial number in the back of the manual near the assembly diagram (or month and year of purchase if product has no number). Keep this manual and the receipt in a safe and dry place for future reference.

21g

Home Hair Clipper Kit



Visit our website at: <http://www.harborfreight.com>
Email our technical support at: productsupport@harborfreight.com

58904

When unpacking, make sure that the product is intact and undamaged. If any parts are missing or broken, please call 1-888-866-5797 as soon as possible.

Copyright© 2021 by Harbor Freight Tools®. All rights reserved.
No portion of this manual or any artwork contained herein may be reproduced in any shape or form without the express written consent of Harbor Freight Tools. Diagrams within this manual may not be drawn proportionally. Due to continuing improvements, actual product may differ slightly from the product described herein. Tools required for assembly and service may not be included.

⚠ WARNING

Read this material before using this product. Failure to do so can result in serious injury. **SAVE THIS MANUAL.**

Specifications

Accessories	4X Comb Attachments (3, 6, 9, 12mm)
Electrical Rating	125VAC, 60Hz, 15W

IMPORTANT SAFETY INSTRUCTIONS

When using an electrical appliance, basic precautions should always be followed, including the following:

⚠ WARNING Read all instructions before using.

SAVE THESE INSTRUCTIONS

DANGER - To reduce the risk of electric shock:

1. Do not reach for an appliance that has fallen into water. Unplug immediately.
2. Do not use while bathing or showering.
3. Do not place or store appliance where it can fall, or be pulled, into a tub or sink.
4. Do not place in or drop in water or other liquid.
5. Do not rinse appliance with water or any other liquid.
6. Unplug this appliance before cleaning.

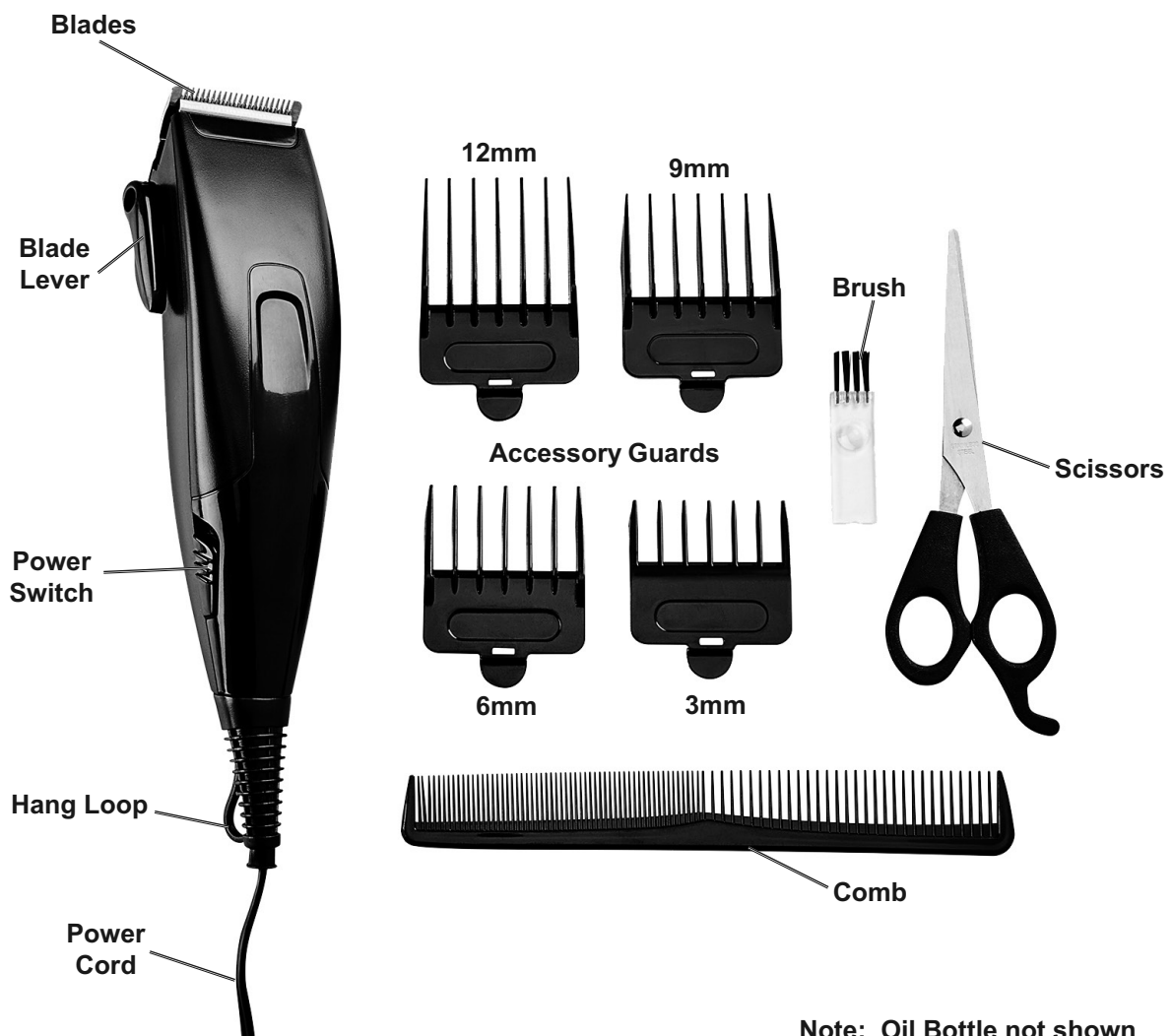
WARNING - To reduce the risk of burns, electric shock, or injury to persons:

1. This appliance should never be left unattended when plugged in.
2. Close supervision is necessary when this appliance is used on, by, or near children or invalids.
3. Use this appliance only for its intended use as described in this manual. Do not use attachments not recommended by the manufacturer.
4. Never operate this appliance if it has a damaged cord or plug, if it is not working properly, if it has been dropped or damaged, or dropped into water. Return the appliance to a service center for examination and repair.
5. Keep the cord away from heated surfaces.
6. Never operate the appliance with the air openings blocked. Keep the air openings free of lint, hair, and the like.
7. Never drop or insert any object into any opening.
8. Do not use outdoors or operate where aerosol (spray) products are being used or where oxygen is being administered.
9. Do not use this appliance with a damaged or broken comb.
10. To reduce the risk of electric shock, the appliance is equipped with a polarized plug (one blade is wider than the other). This plug will only fit into the polarized outlet one way. In the event the plug does not fit fully into the outlet, reverse the plug. If the plug still will not fit the outlet, have a proper outlet installed by a qualified electrician. Do not change the plug in any way.

General Safety Rules

1. **Do not abuse the Power Cord.** Never use the Power Cord to carry the appliance or pull the Plug from an outlet. Keep the Power Cord away from heat, oil, sharp edges, or moving parts. Replace damaged Power Cords immediately. Damaged Power Cords increase the risk of electric shock.
2. **Stay alert.** Do not use while tired or under the influence of drugs, alcohol, or medication. A moment of inattention while operating this appliance can result in serious personal injury.
3. **Avoid accidental starting.** Be sure the Power Switch is off before plugging in.
4. **Disconnect the Power Cord Plug from the power source before making any adjustments, changing accessories, or storing the appliance.** Such preventive safety measures reduce the risk of starting the appliance accidentally. Always unplug the appliance from its electrical outlet before performing any inspection, maintenance, or cleaning procedures.
5. **Store idle appliance out of reach of children and other untrained persons.** The appliance are dangerous in the hands of untrained users.
6. **This product is intended for household use only.**
7. **Maintain labels and nameplates on the appliance.** These carry important information. If unreadable or missing, contact Harbor Freight Tools for a replacement.
8. People with pacemakers should consult their physician(s) before use. Electromagnetic fields in close proximity to heart pacemaker could cause pacemaker interference or pacemaker failure.

Functions



Operation Instructions



Read the entire Important Safety Instructions section at the beginning of this manual including all text under subheadings therein before set up or use of this product.

Blade Lever

1. The Blade Lever allows the operator to change the closeness setting of the cut without an additional Accessory Guard.
2. At the top position, the blades will give the closest cut and leave the hair the shortest. Pushing the Lever downward increases the cutting length.
3. If hair jams the blades, switch the Blade Lever up and down rapidly to clear the blades.

Cutting Hair

1. The Accessory Guard's sizes are marked on the outside middle surface. To attach a comb, hold it with the teeth upwards and snap it onto and along the Clipper Blades until the front of the comb is seated firmly against the Blades.
9. With the 3mm/6mm Accessory Guard teeth pointed upwards, lift the Clippers upwards and outwards through the hair, trimming a small amount at a time.

Accessory Guard	Hair Length Left
3mm	1/8"
6mm	1/4"
9mm	3/8"
12mm	1/2"

2. For good visibility and easy access, seat the person getting their hair cut with their head at eye level of the person cutting the hair.
3. Comb hair free of tangles and arrange in style desired.

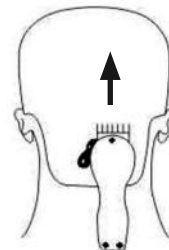
NOTICE: Do not use Clippers on soaking wet hair. Towel dried hair is acceptable.

4. Place a towel around the neck and shoulders of the person getting the haircut.
5. Attach the 3mm or 6mm Accessory Guards.

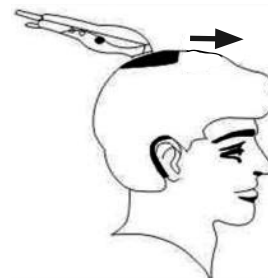


6. Dry hair is more easily controlled.
 - Cut hair slowly and with short strokes.
 - Only cut a little hair at a time, as more can be trimmed later if necessary.
 - Frequently comb hair back into the intended style.
7. Be sure the Power Switch is on the OFF position then plug the Clippers into 120VAC outlet. When ready to use, slide the Power Switch to ON position.
8. Hold the Clippers cutting edge up, and begin the haircut starting at the middle of the base of the neck.

10. As you cut, lift the Clipper's head towards you while continuing to cut the back area from the bottom of the neck to the top of the ears.
11. Change to 9mm or 12mm Accessory Guard and, working upwards, cut the hair on the back and top of the head.

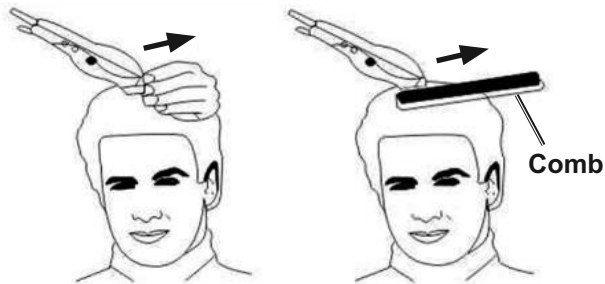


12. Using the 9mm or 12mm Accessory Guard, cut hair on top of head from back to front, against the direction in which the hair normally grows. In some cases, this may require changing direction.



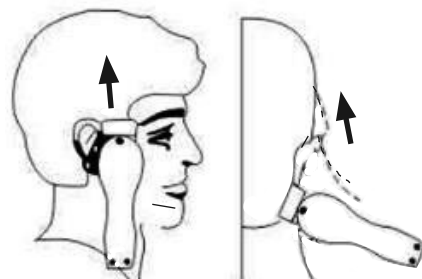
13. 3mm or 6mm Accessory Guard can be used to achieve very close "crew" cuts.

14. For longer hair, use the provided Comb to lift the hair away from the top of the head. Cut over the comb with the hair lifted to desired length.



15. Use the taper level without an Accessory Guard for close trimming around the base and side of the neck, and around the ears.

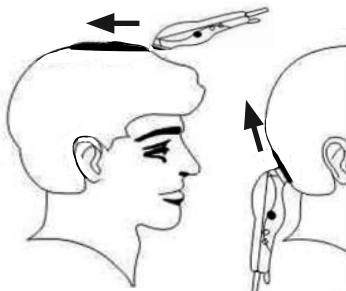
16. To cut the sideburns, change to 3mm or 6mm Accessory Guard. To produce a clean, straight line for the sideburns, reverse the Clippers by turning the bottom side upwards.



17. Press the Clippers at a right angle to the head, with the tips of the blades lightly touching the skin and work downwards to obtain a clean, razor-like cut.
18. Comb through hair to check for uneven strands and ensure an even cut.

Short Tapered Styles

1. Starting with 12mm Accessory Guard, cut from the back of the head to the top of the head. Hold the Accessory Guard flat against the head and slowly move the Clippers through the hair.



2. Use the same procedure from the lower side of the head to the upper side of the head (as illustrated).
3. Cut the hair against the direction in which it grows, from the front to the top of the head, and then level the cut with the sides.
4. To create a “flat top” look, the hair must be cut over the top of a flat comb rather than with an Accessory Guard.
5. Use the closer cutting Accessory Guards to taper the hair down to the neckline, as desired.

After Cutting

Clean and Lubricate the Clippers after each use.

1. Before turning the Clippers off, rapidly slide the Blade Lever from close cut to longer cut twice. This will clear trimmings from the Clippers.
2. Turn off Clippers. Use the Brush to clean any trimming remnants from the Clippers.

WARNING! TO PREVENT SERIOUS INJURY FROM ELECTRIC SHOCK: Do not rinse Clippers.

3. Add a few drops of oil to the blades.

CAUTION: Do not use hair oil, grease, or any type of solvent on the Clippers. The solvent will evaporate and leave a residue that can slow down the blade’s motion.

4. Turn the Clippers on for a few moments to distribute the oil and to make sure it runs smoothly. Then, turn the Clippers off.
5. Wipe off excess oil.
6. After use:
 - a. Unplug Clippers and remove Accessory Guard.
 - b. Clean combs with clean, dry cloth.
 - c. Clean Clipper’s external surface with clean, dry cloth.
 - d. Store combs and Clipper indoors out of children’s reach.

Maintenance and Service



Procedures not specifically explained in this manual must be performed only by a qualified technician.

!WARNING

TO PREVENT SERIOUS INJURY FROM ACCIDENTAL OPERATION:

Make sure that the Switch is in the off-position and unplug the tool from its electrical outlet before performing any procedure in this section.

TO PREVENT SERIOUS INJURY FROM TOOL FAILURE:

Do not use damaged equipment. If abnormal noise or vibration occurs, have the problem corrected before further use.

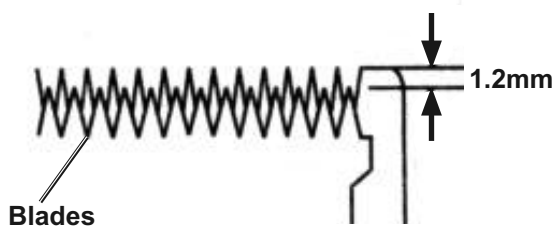
Cleaning, Maintenance, and Lubrication

1. **BEFORE EACH USE**, inspect the general condition of the tool. Check for:
 - loose hardware,
 - misalignment or binding of moving parts,
 - damaged cord/electrical wiring,
 - cracked or broken parts, and
 - any other condition that may affect its safe operation.
2. **AFTER USE**, wipe external surfaces of the tool with clean cloth.
3. **!WARNING! TO PREVENT SERIOUS INJURY:** If the supply cord of this power tool is damaged, it must be replaced only by a qualified service technician.

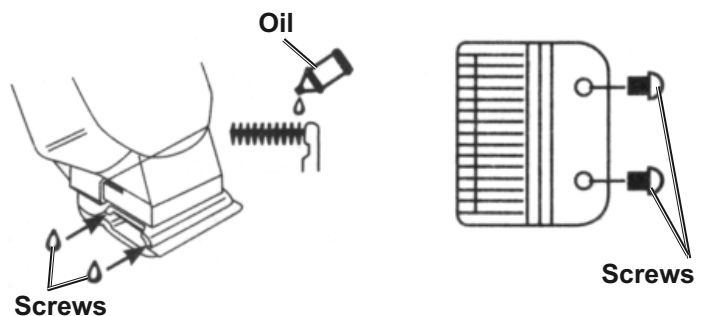
Blade Alignment

The Clippers come oiled and aligned from the factory. Blades must be realigned after they have been removed for cleaning or replacement.

1. To realign blades, match the upper and lower blades teeth up, point for point. The end of the top blade teeth should be approximately 1.2mm (just under 1/16") back from the bottom blade.



2. If blade alignment is incorrect: Add a few drops of oil to the blades, power the Clippers on for a few moments, then turn off and unplug. Loosen screws slightly and readjust. Tighten screws after blade is aligned.

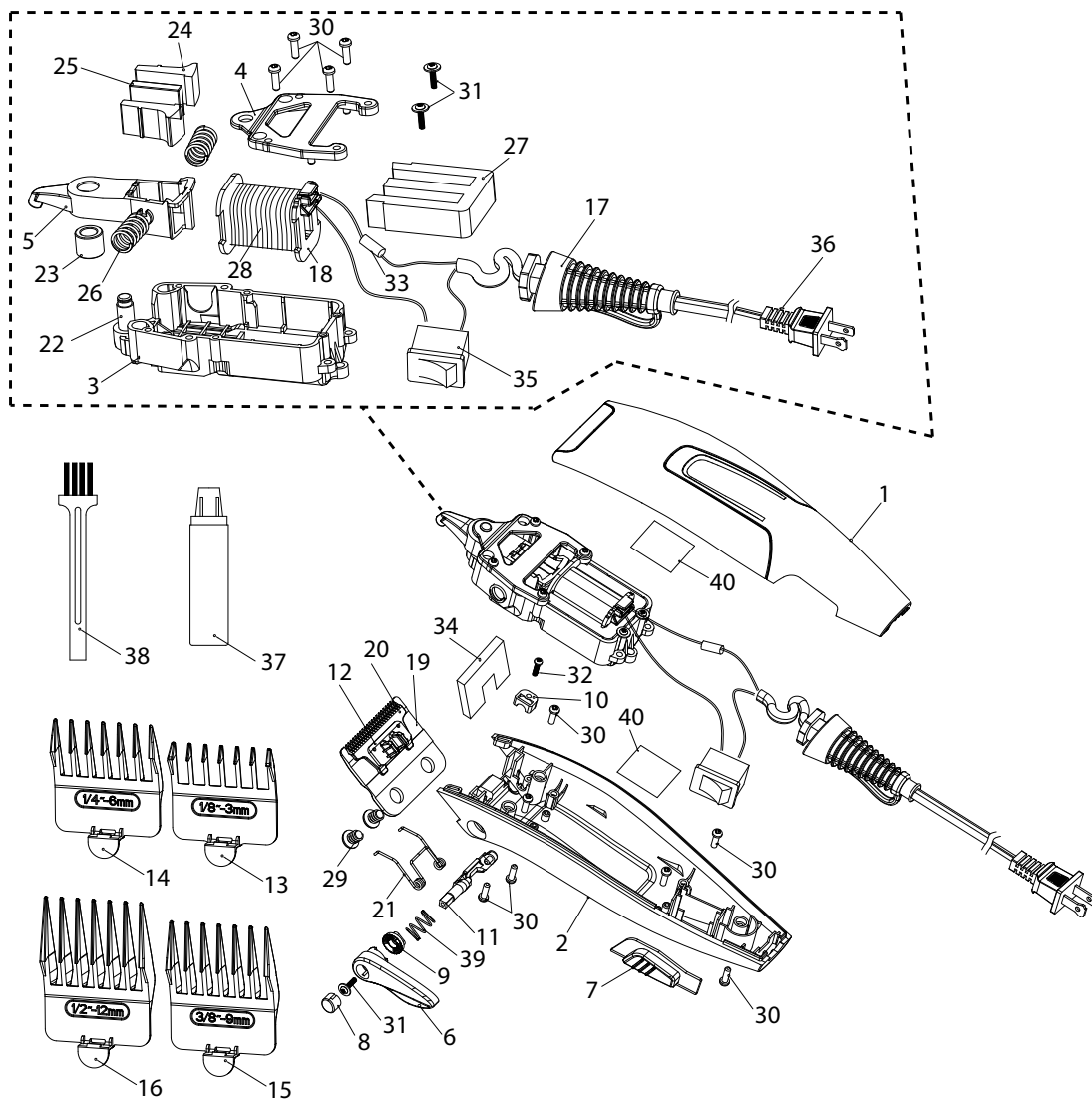


3. The appliance comes equipped with a Power Screw. The Power Screw should **only be adjusted by a qualified service technician.**

Parts List and Diagram

Part	Description	Qty
1	Top Cover	1
2	Bottom Cover	1
3	Winding Case	1
4	Support	1
5	Swing Rod	1
6	Blade Lever	1
7	Power Switch	1
8	Cap	1
9	Click Lock	1
10	Axle Clamp	1
11	Clamp	1
12	Moving Blade Support	1
13	Accessory Guard, 3mm (1/8")	1
14	Accessory Guard, 6mm (1/4")	1
15	Accessory Guard, 9mm (3/8")	1
16	Accessory Guard, 12mm (1/2")	1
17	Cord Protector	1
18	Winding Support	1
19	Stationary Blades, 45 x 38 x 2mm	1
20	Moving Blades, 39 x 18.5 x 1.5mm	1
21	Blade Spring, Ø0.9mm	1

Part	Description	Qty
22	Axle 2, 20.5 x 6mm	1
23	Axle 1, Ø0.9mm	1
24	Magnet Support	2
25	Magnet	1
26	Power Spring	2
27	Iron Sheet	22
28	Winding	1
29	Screw, Ø5.0 x 6	2
30	Screw, PB2.5 x 8	11
31	Screw, PWB2.8 x 6.0	3
32	Screw, PB2.0 x 8	1
33	Tube	1
34	Sponge	1
35	Switch	1
36	Power Cord	1
37	Oil Bottle	1
38	Brush	1
39	Spring	1
40	Tin Paper	1
41	Scissors (not shown)	1
42	Comb (not shown)	1



PLEASE READ THE FOLLOWING CAREFULLY

THE MANUFACTURER AND/OR DISTRIBUTOR HAS PROVIDED THE PARTS LIST AND ASSEMBLY DIAGRAM IN THIS DOCUMENT AS A REFERENCE TOOL ONLY. NEITHER THE MANUFACTURER OR DISTRIBUTOR MAKES ANY REPRESENTATION OR WARRANTY OF ANY KIND TO THE BUYER THAT HE OR SHE IS QUALIFIED TO MAKE ANY REPAIRS TO THE PRODUCT, OR THAT HE OR SHE IS QUALIFIED TO REPLACE ANY PARTS OF THE PRODUCT. IN FACT, THE MANUFACTURER AND/OR DISTRIBUTOR EXPRESSLY STATES THAT ALL REPAIRS AND PARTS REPLACEMENTS SHOULD BE UNDERTAKEN BY CERTIFIED AND LICENSED TECHNICIANS, AND NOT BY THE BUYER. THE BUYER ASSUMES ALL RISK AND LIABILITY ARISING OUT OF HIS OR HER REPAIRS TO THE ORIGINAL PRODUCT OR REPLACEMENT PARTS THERETO, OR ARISING OUT OF HIS OR HER INSTALLATION OF REPLACEMENT PARTS THERETO.

Limited 90 Day Warranty

Harbor Freight Tools Co. makes every effort to assure that its products meet high quality and durability standards, and warrants to the original purchaser that this product is free from defects in materials and workmanship for the period of 90 days from the date of purchase. This warranty does not apply to damage due directly or indirectly, to misuse, abuse, negligence or accidents, repairs or alterations outside our facilities, criminal activity, improper installation, normal wear and tear, or to lack of maintenance. We shall in no event be liable for death, injuries to persons or property, or for incidental, contingent, special or consequential damages arising from the use of our product. Some states do not allow the exclusion or limitation of incidental or consequential damages, so the above limitation of exclusion may not apply to you. THIS WARRANTY IS EXPRESSLY IN LIEU OF ALL OTHER WARRANTIES, EXPRESS OR IMPLIED, INCLUDING THE WARRANTIES OF MERCHANTABILITY AND FITNESS.

To take advantage of this warranty, the product or part must be returned to us with transportation charges prepaid. Proof of purchase date and an explanation of the complaint must accompany the merchandise. If our inspection verifies the defect, we will either repair or replace the product at our election or we may elect to refund the purchase price if we cannot readily and quickly provide you with a replacement. We will return repaired products at our expense, but if we determine there is no defect, or that the defect resulted from causes not within the scope of our warranty, then you must bear the cost of returning the product.

This warranty gives you specific legal rights and you may also have other rights which vary from state to state.

Record Serial Number Here: _____

Note: If product has no serial number, record month and year of purchase instead.

Note: Some parts are listed and shown for illustration purposes only, and are not available individually as replacement parts. Specify UPC 193175448668 when ordering parts.