

Owner's Manual & Safety Instructions

Save This Manual Keep this manual for the safety warnings and precautions, assembly, operating, inspection, maintenance and cleaning procedures. Write the product's serial number in the back of the manual near the assembly diagram (or month and year of purchase if product has no number). Keep this manual and the receipt in a safe and dry place for future reference.

22a

QUINN™

58950

Precision Torque Screwdriver



Visit our website at: <http://www.harborfreight.com>
Email our technical support at: productsupport@harborfreight.com

When unpacking, make sure that the product is intact and undamaged. If any parts are missing or broken, please call 1-888-866-5797 as soon as possible.

Copyright© 2021 by Harbor Freight Tools®. All rights reserved.
No portion of this manual or any artwork contained herein may be reproduced in any shape or form without the express written consent of Harbor Freight Tools. Diagrams within this manual may not be drawn proportionally. Due to continuing improvements, actual product may differ slightly from the product described herein.
Tools required for assembly and service may not be included.

⚠WARNING

Read this material before using this product.
Failure to do so can result in serious injury.
SAVE THIS MANUAL.

Specifications

Torque Range	10 - 50 in-lb.
Drive	Internal Hex
Accuracy	± 6%



Important Safety Information



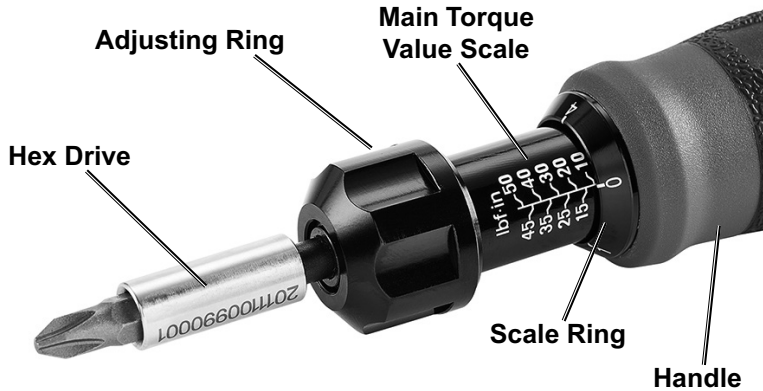
WARNING Read all safety warnings and instructions.

Failure to follow the warnings and instructions may result in injury.

Save all warnings and instructions for future reference.

1. The warnings, cautions, and instructions in this instruction manual cannot cover all possible conditions and situations that may occur. It must be understood by the operator that common sense and caution are factors which cannot be built into this product, but must be supplied by the operator.
2. Wear ANSI-approved safety goggles during use.
3. Do not use for loosening fasteners.
4. Use only within rated torque range.
5. Use as intended only. Do not use as hammer or pry bar.
6. Do not use a Torque Screwdriver that has been dropped. Have it tested before putting back into use.
7. Have the Torque Screwdriver calibrated and serviced only by a qualified technician.
8. Inspect before every use; do not use if damaged or if parts are loose.
9. Keep away from children.
10. Use only bits with the correct drive and rated to at least the torque that will be applied to it.

Functions



Operating Instructions

CAUTION! Wear ANSI-approved safety goggles during use.

Note: The Torque Screwdriver is marked with Inch Pounds. The following instructions illustrate use in Inch Pounds.

1. BEFORE EVERY USE, exercise Torque Screwdriver. Pull down Adjusting Ring, then perform the following exercise three times:
 - a. Turn Handle to the right until maximum torque setting is reached.
 - b. Turn Handle to the left until minimum torque setting is reached.

CAUTION! To prevent damage to the Torque Screwdriver, do not use for loosening fasteners.

2. Clean the fastener's threads. Dirty threads may result in a misleading torque reading.
3. Select bit that properly fits the fastener. Press bit firmly in Hex Drive.

Note: Thread fastener with another tool until it is snug, then finish the operation with the Torque Screwdriver.

4. Pull down Adjusting Ring and hold in place while adjusting torque.

5. To set torque value to 24:
 - a. Turn Handle until the "0" on Scale Ring lines up with the "20" on the Main Torque Value Scale.
 - b. Continue to turn Handle until the "4" on Scale Ring lines up with center line on Main Torque Scale. The torque value is set to 24 in-lb. ($20 + 4 = 24$).
6. Release Adjusting Ring to lock Handle in place.
7. Place Torque Screwdriver onto fastener at a 90 degree angle.
8. Rotate clockwise smoothly until a click is heard. **STOP ROTATING! The proper torque has been achieved. Further rotating may damage fastener.**
9. Release pressure to allow the Handle to reset for the next operation.
10. AFTER EVERY USE, pull down Adjusting Ring, set to the lowest torque setting, then release Adjusting Ring.
11. Store Torque Screwdriver inside its case, indoors, in a clean, dry location that is out of reach of children.

Maintenance and Servicing



Procedures not specifically explained in this manual must be performed only by a qualified technician.



CAUTION

TO PREVENT INJURY FROM TOOL FAILURE:

Do not use damaged equipment. If abnormal noise or vibration occurs, have the problem corrected before further use.

1. **BEFORE EACH USE**, inspect the general condition of the tool. Check for:
 - loose hardware,
 - misalignment or binding of moving parts,
 - cracked or broken parts, and
 - any other condition that may affect its safe operation.
2. **AFTER USE:**
 - pull down the Adjusting Ring, set to the lowest torque setting, then release the Adjusting Ring.
 - wipe Torque Screwdriver with a clean cloth. Do not use liquid on the cloth or immerse Torque Screwdriver in liquid.
3. **EVERY 6 MONTHS**, have the Torque Screwdriver calibrated and serviced by a qualified technician.

Parts List

<u>Part</u>	<u>Description</u>	<u>Qty</u>
1	Socket With Magnet	1
2	C Clip	1
3	Adjustment Ring	1
4	Positioning Spring	1
5	Scale Ring	1
6	Hex Screw	3
7	Washer	3
8	Steel Ball	3
9	Spring	3
10	Secondary Scale Ring	1
11	Mandrel Extension	1
12	Aluminum Internal Tube	1
13	Fixing Rivet	4
14	Adjustable Lever Housing	1

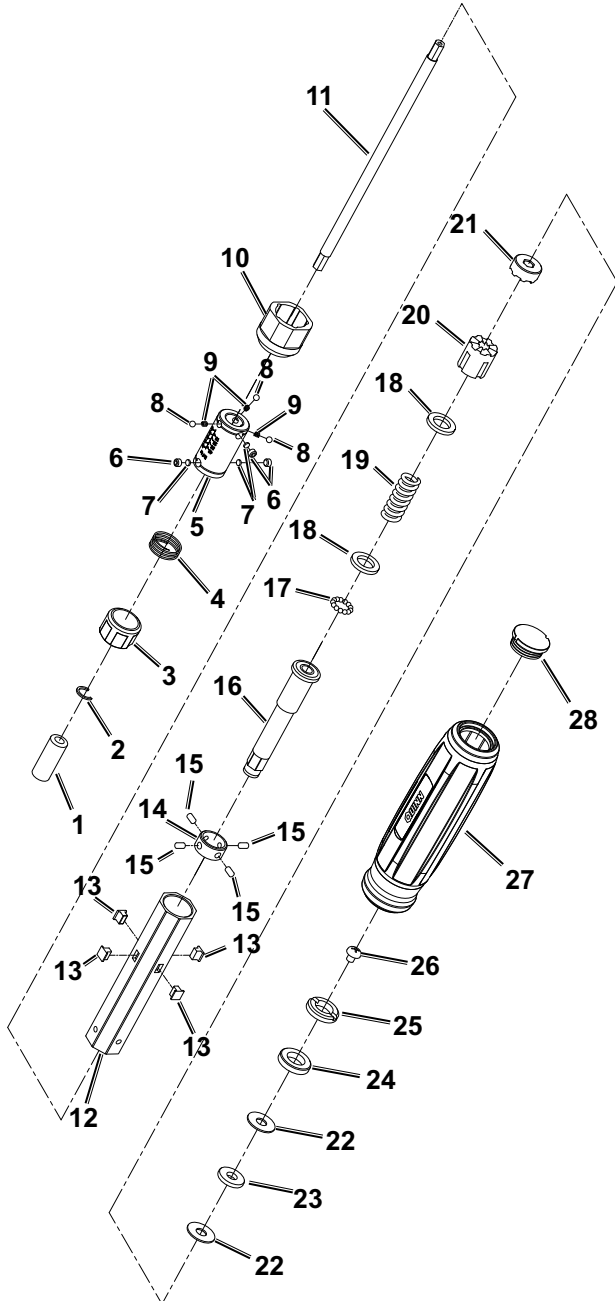
<u>Part</u>	<u>Description</u>	<u>Qty</u>
15	Bolt	4
16	Adjustable Lever	1
17	Steel Ball	13
18	Washer	2
19	Torque Spring	1
20	Feed Sleeve	1
21	Post Sleeve	1
22	Washer	2
23	Needle Bearing	1
24	Screw	1
25	Screw	1
26	Flat Head Screw	1
27	Plastic Grip	1
28	End Cap	1

Record Product's Serial Number Here: _____

Note: If product has no serial number, record month and year of purchase instead.

Note: Some parts are listed and shown for illustration purposes only, and are not available individually as replacement parts. Specify UPC 193175451781 when ordering parts.

Diagram



Limited 90 Day Warranty

Harbor Freight Tools Co. makes every effort to assure that its products meet high quality and durability standards, and warrants to the original purchaser that this product is free from defects in materials and workmanship for the period of 90 days from the date of purchase. This warranty does not apply to damage due directly or indirectly, to misuse, abuse, negligence or accidents, repairs or alterations outside our facilities, criminal activity, improper installation, normal wear and tear, or to lack of maintenance. We shall in no event be liable for death, injuries to persons or property, or for incidental, contingent, special or consequential damages arising from the use of our product. Some states do not allow the exclusion or limitation of incidental or consequential damages, so the above limitation of exclusion may not apply to you. THIS WARRANTY IS EXPRESSLY IN LIEU OF ALL OTHER WARRANTIES, EXPRESS OR IMPLIED, INCLUDING THE WARRANTIES OF MERCHANTABILITY AND FITNESS.

To take advantage of this warranty, the product or part must be returned to us with transportation charges prepaid. Proof of purchase date and an explanation of the complaint must accompany the merchandise. If our inspection verifies the defect, we will either repair or replace the product at our election or we may elect to refund the purchase price if we cannot readily and quickly provide you with a replacement. We will return repaired products at our expense, but if we determine there is no defect, or that the defect resulted from causes not within the scope of our warranty, then you must bear the cost of returning the product.

This warranty gives you specific legal rights and you may also have other rights which vary from state to state.

