

Owner's Manual & Safety Instructions

Save This Manual Keep this manual for the safety warnings and precautions, assembly, operating, inspection, maintenance and cleaning procedures. Write the product's serial number in the back of the manual near the assembly diagram (or month and year of purchase if product has no number). Keep this manual and the receipt in a safe and dry place for future reference.

21j

WARRIOR™

ROUTER SPEED CONTROL



Visit our website at: <http://www.harborfreight.com>
Email our technical support at: productsupport@harborfreight.com

59386

When unpacking, make sure that the product is intact and undamaged. If any parts are missing or broken, please call 1-888-866-5797 as soon as possible.

Copyright© 2021 by Harbor Freight Tools®. All rights reserved.
No portion of this manual or any artwork contained herein may be reproduced in any shape or form without the express written consent of Harbor Freight Tools. Diagrams within this manual may not be drawn proportionally. Due to continuing improvements, actual product may differ slightly from the product described herein.
Tools required for assembly and service may not be included.

⚠ WARNING

Read this material before using this product. Failure to do so can result in serious injury. **SAVE THIS MANUAL.**

Specifications

| | |
|------------------|------|
| Current Capacity | 8A |
| Voltage Capacity | 120V |

IMPORTANT SAFETY INFORMATION

Use Precautions

1. This product is not a toy. Do not allow children to play with or near this item.
2. Use as intended only.
3. Inspect before every use; do not use if parts are loose or damaged.
4. Use proper size and type of extension cord. This tool requires use of an extension cord of 0 to 15 amps capability (up to 50 feet), with wire size rated at 18 AWG. Longer extension cords require larger size wire. If you are using the tool outdoors, use an extension cord rated for outdoor use.
5. Make sure router is compatible with Router Speed Control. Do not use with brushless type motors or soft/slow start routers.
6. Maintain product labels and nameplates. These carry important safety information. If unreadable or missing, contact Harbor Freight Tools for a replacement.

Setup - Before Use:



Read the **ENTIRE IMPORTANT SAFETY INFORMATION** section at the beginning of this document including all text under subheadings therein before set up or use of this product.

WARNING! TO PREVENT SERIOUS INJURY: Do not use with brushless type motors or soft/slow start routers.

1. Before using, read and understand all instructions and safety warnings in the instruction manual provided by the manufacturer of the router being used. Verify that the router's trigger switch is in the OFF position.
2. Plug the Router's electrical cord into the outlet on the Router Speed Control.
3. Insert the Router Speed Control Plug (13) into an electrical outlet or extension cord.

Operating Instructions



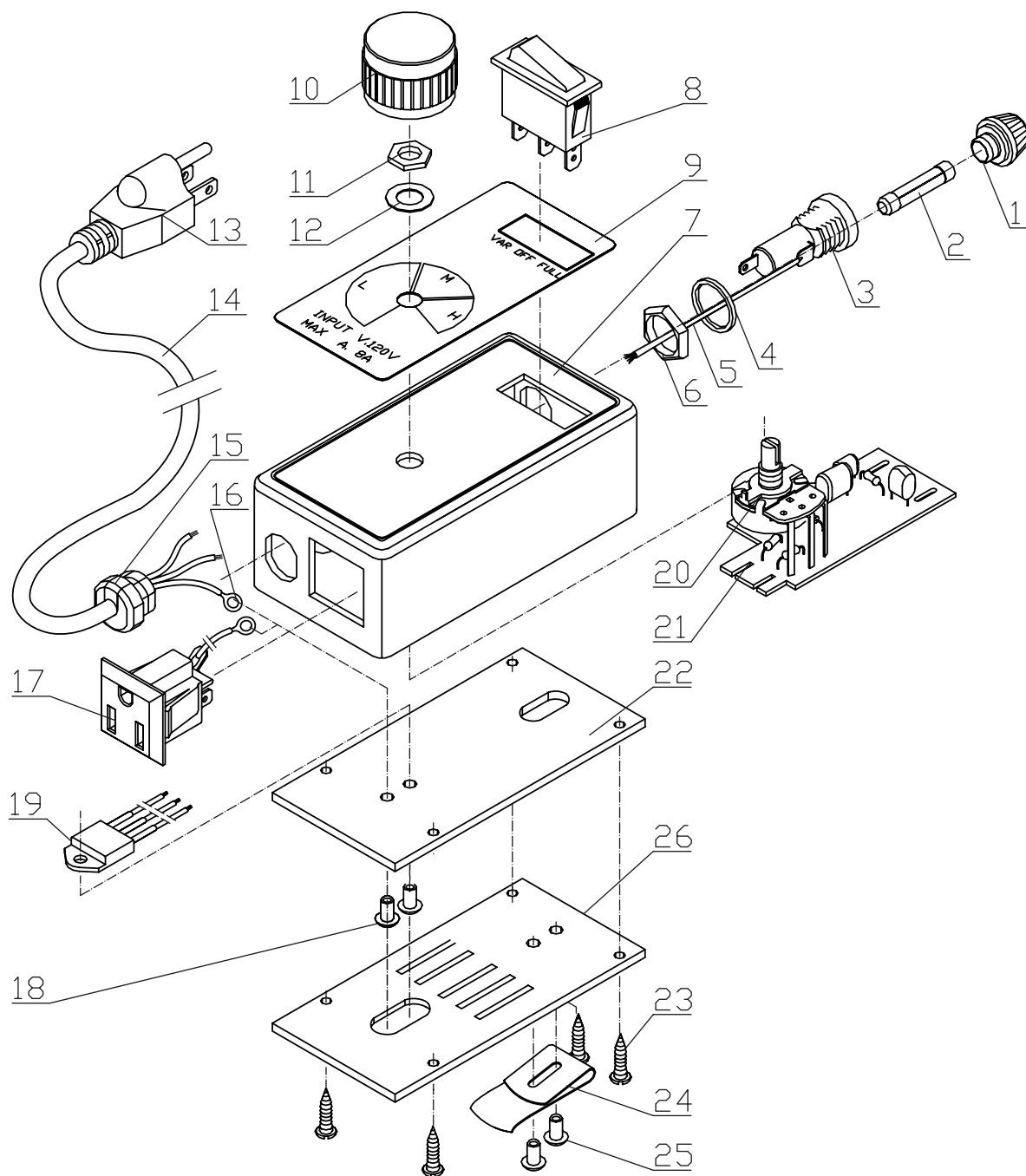
Read the **ENTIRE IMPORTANT SAFETY INFORMATION** section at the beginning of this document including all text under subheadings therein before set up or use of this product.

1. For variable speed control, set the Rocker Switch (8) to VAR and turn the Speed Knob (10) to Low, Medium, or High speed.
2. For full speed operation, set the Rocker Switch (8) to FULL.
3. When ready, press the router switch to the ON position to begin routing.
4. During variable speed operation you can release the router switch and turn the Speed Knob (10) to another speed, then resume work.
5. When finished, release the router switch and press the Rocker Switch (8) to the (center) OFF position.
6. Unplug the Router Speed Control from the outlet. Unplug router from Router Speed Control.
7. Store indoors and out of the reach of children when not in use.

Parts List and Diagram

| Part | Description | Qty |
|------|---------------|-----|
| 1 | Fuse Lid | 1 |
| 2 | Fuse | 1 |
| 3 | Fuse Holder | 1 |
| 4 | Washer | 1 |
| 5 | Wire | 1 |
| 6 | Nut | 1 |
| 7 | Switch Box | 1 |
| 8 | Rocker Switch | 1 |
| 9 | Face Board | 1 |
| 10 | Speed Knob | 1 |
| 11 | Nut | 1 |
| 12 | Washer | 1 |
| 13 | Plug | 1 |

| Part | Description | Qty |
|------|----------------|-----|
| 14 | Cord | 1 |
| 15 | Cord Clamp | 2 |
| 16 | Weld Flake | 1 |
| 17 | Outlet Socket | 2 |
| 18 | Rivet | 1 |
| 19 | Rectifier | 1 |
| 20 | Potentiometer | 1 |
| 21 | Circuit Board | 1 |
| 22 | Aluminum Plate | 1 |
| 23 | Screws | 4 |
| 24 | Hold Clamp | 1 |
| 25 | Rivet | 2 |
| 26 | Cover | 1 |



PLEASE READ THE FOLLOWING CAREFULLY

THE MANUFACTURER AND/OR DISTRIBUTOR HAS PROVIDED THE PARTS LIST AND ASSEMBLY DIAGRAM IN THIS DOCUMENT AS A REFERENCE TOOL ONLY. NEITHER THE MANUFACTURER OR DISTRIBUTOR MAKES ANY REPRESENTATION OR WARRANTY OF ANY KIND TO THE BUYER THAT HE OR SHE IS QUALIFIED TO MAKE ANY REPAIRS TO THE PRODUCT, OR THAT HE OR SHE IS QUALIFIED TO REPLACE ANY PARTS OF THE PRODUCT. IN FACT, THE MANUFACTURER AND/OR DISTRIBUTOR EXPRESSLY STATES THAT ALL REPAIRS AND PARTS REPLACEMENTS SHOULD BE UNDERTAKEN BY CERTIFIED AND LICENSED TECHNICIANS, AND NOT BY THE BUYER. THE BUYER ASSUMES ALL RISK AND LIABILITY ARISING OUT OF HIS OR HER REPAIRS TO THE ORIGINAL PRODUCT OR REPLACEMENT PARTS THERETO, OR ARISING OUT OF HIS OR HER INSTALLATION OF REPLACEMENT PARTS THERETO.

Record Serial Number Here:

Note: If product has no serial number, record month and year of purchase instead.

Note: Some parts are listed and shown for illustration purposes only, and are not available individually as replacement parts. Specify UPC 193175468819 when ordering parts.

Limited 90 Day Warranty

Harbor Freight Tools Co. makes every effort to assure that its products meet high quality and durability standards, and warrants to the original purchaser that this product is free from defects in materials and workmanship for the period of 90 days from the date of purchase. This warranty does not apply to damage due directly or indirectly, to misuse, abuse, negligence or accidents, repairs or alterations outside our facilities, criminal activity, improper installation, normal wear and tear, or to lack of maintenance. We shall in no event be liable for death, injuries to persons or property, or for incidental, contingent, special or consequential damages arising from the use of our product. Some states do not allow the exclusion or limitation of incidental or consequential damages, so the above limitation of exclusion may not apply to you. THIS WARRANTY IS EXPRESSLY IN LIEU OF ALL OTHER WARRANTIES, EXPRESS OR IMPLIED, INCLUDING THE WARRANTIES OF MERCHANTABILITY AND FITNESS.

To take advantage of this warranty, the product or part must be returned to us with transportation charges prepaid. Proof of purchase date and an explanation of the complaint must accompany the merchandise. If our inspection verifies the defect, we will either repair or replace the product at our election or we may elect to refund the purchase price if we cannot readily and quickly provide you with a replacement. We will return repaired products at our expense, but if we determine there is no defect, or that the defect resulted from causes not within the scope of our warranty, then you must bear the cost of returning the product.

This warranty gives you specific legal rights and you may also have other rights which vary from state to state.



26677 Agoura Road • Calabasas, CA 91302 • 1-888-866-5797