

Owner's Manual & Safety Instructions

Save This Manual Keep this manual for the safety warnings and precautions, assembly, operating, inspection, maintenance and cleaning procedures. Write the product's serial number in the back of the manual (or month and year of purchase if product has no number). Keep this manual and the receipt in a safe and dry place for future reference.

22g

CENTRAL[®]

MACHINERY

6L ULTRASONIC PARTS CLEANER



59430

Visit our website at: <http://www.harborfreight.com>
Email our technical support at: productsupport@harborfreight.com

When unpacking, make sure that the product is intact and undamaged. If any parts are missing or broken, please call 1-888-866-5797 as soon as possible.

Copyright© 2022 by Harbor Freight Tools®. All rights reserved.

No portion of this manual or any artwork contained herein may be reproduced in any shape or form without the express written consent of Harbor Freight Tools. Diagrams within this manual may not be drawn proportionally. Due to continuing improvements, actual product may differ slightly from the product described herein. Tools required for assembly and service may not be included.

⚠ WARNING

**Read this material before using this product.
Failure to do so can result in serious injury.
SAVE THIS MANUAL.**

IMPORTANT SAFETY INSTRUCTIONS

WARNING

Read all safety warnings, instructions, illustrations and specifications provided with this power tool. Failure to follow all instructions listed below may result in electric shock, fire and/or serious injury.

Save all warnings and instructions for future reference.

INSTRUCTIONS PERTAINING TO A RISK OF FIRE, ELECTRIC SHOCK, OR INJURY TO PERSONS:

1. **This product is not a toy.**
Keep it out of reach of children.
2. **Do not use outdoors.**
3. **To disconnect, turn all controls to the off position, then remove plug from outlet.** *Do not unplug by pulling on cord. To unplug, grasp the plug, not the cord.*
4. **Always unplug this product immediately after using.** *Unplug from outlet when not in use and before servicing or cleaning.*
5. **Never operate this product if it has a damaged cord or plug, if it is not working properly, if it has been dropped or damaged, or dropped into water.** *Return the product to a service center for examination and repair.*
6. **To reduce the risk of electrical shock, do not submerge product in water or other liquid.** *Do not store or place product where it can fall or be pulled into a tub or sink.*
7. **Do not reach for a product that has fallen into water.** *Unplug immediately.*
8. **Use this product only for its intended use as described in this manual.** *Do not use attachments not recommended by the manufacturer.*
9. **Keep the cord away from heated surfaces.**
10. **Never block the air openings of the product or place it on a soft surface, such as a bed or couch, where the air openings may be blocked.** *Keep the air openings free of lint, hair, and the like.*
11. **Never use while sleeping or drowsy.**
12. **Connect this product to a properly grounded outlet only.** *See Grounding Instructions.*
13. **Unplug this product before filling.** *Fill tank with water or cleaning solutions only unless otherwise specified by manufacturer. Do not overfill.*
14. **Use only water-based, non-corrosive cleaning solutions.**
15. **Do not run Cleaner dry.**
16. **People with pacemakers should consult their physician(s) before using this product.** *Electromagnetic fields in close proximity to a heart pacemaker could cause interference to or failure of the pacemaker.*
17. **This product is for household use.**



SAVE THESE INSTRUCTIONS.

SPECIFICATIONS

| | |
|-------------------|---|
| Electrical Rating | 120 V / 60 Hz / 400W 120 W (Ultrasonic), 270 W (Heating) |
| Tank Dimensions | 11-3/4" x 5-7/8" x 5-7/8" |
| Tank Capacity | 6 L |
| Max Temperature | 176° F |

FOR HOUSEHOLD USE ONLY



FCC Statement:

Potential Equipment Interference: This equipment has been tested and found to comply with the limits for a Consumer ISM equipment, pursuant to Part 18 of the FCC Rules. These limits are designed to provide reasonable protection against harmful interference in a residential installation. This equipment generates, uses and can radiate radio frequency energy and, if not installed and used in accordance with the instructions, may cause harmful interference to radio communications. However, there is not guarantee that interference will not occur in a particular installation.

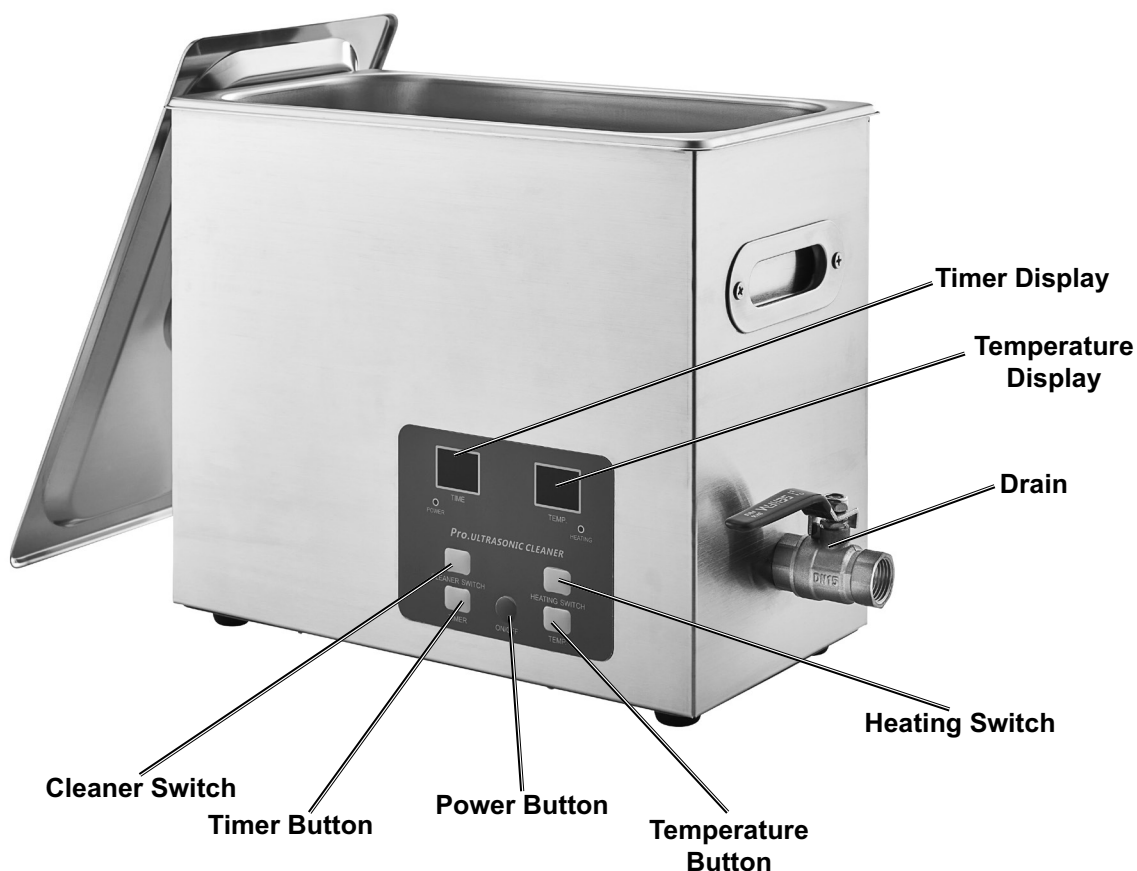
System Maintenance: Please note that changes or modifications of this product is not expressly approved by the party responsible for compliance and could void the user's authority to operate the equipment.

Simple Measures To Correct Interference: If this equipment does cause harmful interference to radio or television reception, which can be determined by turning the equipment off and on, the user is encouraged to try to correct the interference by one or more of the following measures:

- Reorient or relocate the receiving antenna.
- Increase the separation between the equipment and receiver.
- Connect the equipment into an outlet on a circuit different from that to which the receiver is connected.
- Consult the dealer or an experienced Radio/TV technician for help.

INSTALLATION INSTRUCTIONS

Functions



Grounding

⚠ WARNING



TO PREVENT ELECTRIC SHOCK AND DEATH FROM INCORRECT GROUNDING:

Check with a qualified electrician if you are in doubt as to whether the outlet is properly grounded. Do not modify the power cord plug provided with the product. Do not use the if the power cord or plug is damaged. If damaged, have it repaired by a service facility before use. If the plug will not fit the outlet, have a proper outlet installed by a qualified electrician.

Extension Cords

Use only 3-wire extension cords that have 3-prong grounding plugs and 3-pole receptacles that accept the tool's plug.

OPERATING INSTRUCTIONS



Read the **ENTIRE IMPORTANT SAFETY INSTRUCTIONS** section at the beginning of this manual including all text under subheadings therein before set up or use of this product.

⚠️WARNING

TO PREVENT SERIOUS INJURY FROM ACCIDENTAL OPERATION:

Make sure that the Ultrasonic Cleaner is off before performing any procedure in this section.

Setup

NOTE: Only use Ultrasonic Cleaner on a flat surface.

1. Add cleaning solution to bath. Do not fill more than two-thirds full.

WARNING! TO PREVENT SERIOUS

INJURY: Do not use flammable or corrosive liquids with Ultrasonic Cleaner.

2. Place objects to be cleaned in basket in the Ultrasonic Cleaner.

NOTE: Do not clean multiple objects at a time. Using many objects in the tank at one time will cause them to bang against one another, damaging both the articles being cleaned and the tank.

3. Plug Ultrasonic Cleaner in. Press Power Button to turn Cleaner on.
4. To adjust temperature, press the TEMP Button. Each press of the TEMP Button adjusts the target temperature in increments up to 176° F.

NOTE: To start or stop temperature control, press the Heating Switch.

5. To adjust time, press the TIMER Button. Each press of the TIMER button adjusts the target time by 5 minutes between 5 minutes and 30 minutes.

General Use

1. Begin cleaning cycle by pressing CLEANER SWITCH.
2. Allow cleaning cycle to run for allotted time. When timer reaches 00:00, press the CLEANING SWITCH to end cleaning cycle.
3. Remove items from bath using tongs.
4. If running more than one cleaning cycle, allow a 20 minute rest period between cycles.
5. After use, drain cleaning solution using the Drain on the side of the Ultrasonic Cleaner.
6. Close Drain. Fill bath with water and run a short cleaning cycle to flush any remaining cleaning solution out. Open Drain and drain water from bath.
7. Use Power Button to turn Ultrasonic Cleaner off and unplug item. Allow Ultrasonic Cleaner to cool down before cleaning inside of tank with a clean, damp cloth.
8. Allow Ultrasonic Cleaner to fully dry before storing. Store indoors in a dry location.

NOTE: If Timer reaches 0 minutes and no buttons are pressed after cleaning cycle finishes, the Heater will switch on and off to maintain target temperature.

USER MAINTENANCE



Read the **ENTIRE IMPORTANT SAFETY INSTRUCTIONS** section at the beginning of this manual including all text under subheadings therein before set up or use of this product.

⚠ WARNING

TO PREVENT SERIOUS INJURY FROM ACCIDENTAL OPERATION:

Make sure that the Ultrasonic Cleaner is off and unplugged before performing any procedure in this section.

Instructions

- Before each use, inspect the general condition of the Ultrasonic Cleaner. Check for:
 - loose hardware
 - cracked or broken parts
 - damaged electrical wiring, power plug or cord
 - any other condition that may affect its safe operation.If a problem occurs, have the problem corrected before further use.
Do not use damaged equipment.
 - Disconnect the Power Cord Plug from the power source before storing the Ultrasonic Cleaner to reduce the risk of starting the product accidentally.
 - Store the Ultrasonic Cleaner indoors in a dry location. Keep out of the reach of children and other untrained persons. Ultrasonic Cleaners are dangerous in the hands of untrained users.
 - Maintain product labels and nameplates. These carry important safety information. If unreadable or missing, contact Harbor Freight Tools for a replacement.
 - ⚠ WARNING! If the supply cord of this Ultrasonic Cleaner is damaged, it must be replaced only by a qualified service technician.**
- CAUTION!** This product has no user serviceable parts.

Troubleshooting

| Problem | Possible Causes | Probable Solutions |
|------------------------|--|---|
| Cleaner will not start | <ol style="list-style-type: none">No power at outlet.Cord not connected.Automatic overheating safety shut-off feature has tripped. | <ol style="list-style-type: none">Check power at outlet.Check that cord is plugged in.Allow 20 minute cool-down period before attempting to use the Ultrasonic Cleaner. |

PLEASE READ THE FOLLOWING CAREFULLY

THE MANUFACTURER AND/OR DISTRIBUTOR HAS PROVIDED THE PARTS DIAGRAM IN THIS MANUAL AS A REFERENCE TOOL ONLY. NEITHER THE MANUFACTURER NOR DISTRIBUTOR MAKES ANY REPRESENTATION OR WARRANTY OF ANY KIND TO THE BUYER THAT HE OR SHE IS QUALIFIED TO MAKE ANY REPAIRS TO THE PRODUCT OR THAT HE OR SHE IS QUALIFIED TO REPLACE ANY PARTS OF THE PRODUCT. IN FACT, THE MANUFACTURER AND/OR DISTRIBUTOR EXPRESSLY STATES THAT ALL REPAIRS AND PARTS REPLACEMENTS SHOULD BE UNDERTAKEN BY CERTIFIED AND LICENSED TECHNICIANS AND NOT BY THE BUYER. THE BUYER ASSUMES ALL RISK AND LIABILITY ARISING OUT OF HIS OR HER REPAIRS TO THE ORIGINAL PRODUCT OR REPLACEMENT PARTS THERETO, OR ARISING OUT OF HIS OR HER INSTALLATION OF REPLACEMENT PARTS THERETO.

Record Product's Serial Number Here: _____

Note: If product has no serial number, record month and year of purchase instead.

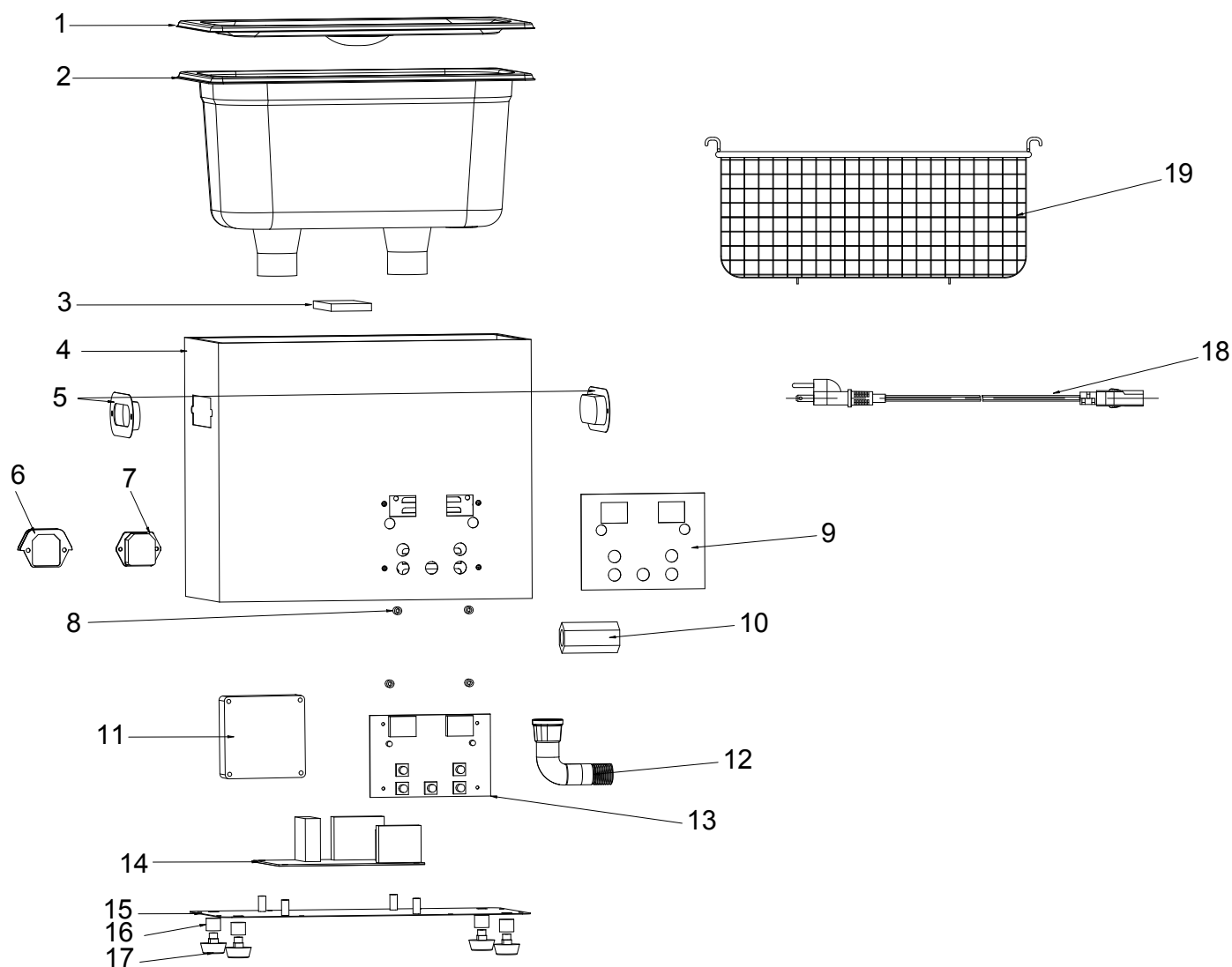
Note: Some parts are listed and shown for illustration purposes only, and are not available individually as replacement parts. Specify UPC 193175470836 when ordering parts.

PARTS LIST AND DIAGRAM

Parts List

| Part | Description | Qty |
|------|------------------------|-----|
| 1 | Cover | 1 |
| 2 | Steel Basin Components | 1 |
| 3 | PTC Heating Sheet | 1 |
| 4 | Main Body | 1 |
| 5 | Handle | 2 |
| 6 | Socket Baffle | 1 |
| 7 | Socket | 1 |
| 8 | Power Strip Gasket | 4 |
| 9 | Display Label | 1 |
| 10 | Ball Valve | 1 |

| Part | Description | Qty |
|------|-----------------|-----|
| 11 | DC Fan | 1 |
| 12 | Drain | 1 |
| 13 | Display Board | 1 |
| 14 | Power Board | 1 |
| 15 | Bottom Cover | 1 |
| 16 | Foot Pad Sleeve | 4 |
| 17 | Foot Pad | 4 |
| 18 | Power Cord | 1 |
| 19 | Basket | 1 |



Limited 90 Day Warranty

Harbor Freight Tools Co. makes every effort to assure that its products meet high quality and durability standards, and warrants to the original purchaser that this product is free from defects in materials and workmanship for the period of 90 days from the date of purchase. This warranty does not apply to damage due directly or indirectly, to misuse, abuse, negligence or accidents, repairs or alterations outside our facilities, criminal activity, improper installation, normal wear and tear, or to lack of maintenance. We shall in no event be liable for death, injuries to persons or property, or for incidental, contingent, special or consequential damages arising from the use of our product. Some states do not allow the exclusion or limitation of incidental or consequential damages, so the above limitation of exclusion may not apply to you. THIS WARRANTY IS EXPRESSLY IN LIEU OF ALL OTHER WARRANTIES, EXPRESS OR IMPLIED, INCLUDING THE WARRANTIES OF MERCHANTABILITY AND FITNESS.

To take advantage of this warranty, the product or part must be returned to us with transportation charges prepaid. Proof of purchase date and an explanation of the complaint must accompany the merchandise. If our inspection verifies the defect, we will either repair or replace the product at our election or we may elect to refund the purchase price if we cannot readily and quickly provide you with a replacement. We will return repaired products at our expense, but if we determine there is no defect, or that the defect resulted from causes not within the scope of our warranty, then you must bear the cost of returning the product.

This warranty gives you specific legal rights and you may also have other rights which vary from state to state.



26677 Agoura Road • Calabasas, CA 91302 • 1-888-866-5797