

Owner's Manual & Safety Instructions

Save This Manual Keep this manual for the safety warnings and precautions, assembly, operating, inspection, maintenance and cleaning procedures. Write the product's serial number in the back of the manual (or month and year of purchase if product has no number). Keep this manual and the receipt in a safe and dry place for future reference.

22g

BauerTM

2144C-B

20v

HYPERMAXTM LITHIUM



1/2 GALLON CORDLESS CHEMICAL FOGGER

Visit our website at: <http://www.harborfreight.com>
Email our technical support at: productsupport@harborfreight.com

59565

When unpacking, make sure that the product is intact and undamaged. If any parts are missing or broken, please call 1-888-866-5797 as soon as possible.

Copyright© 2022 by Harbor Freight Tools®. All rights reserved.
No portion of this manual or any artwork contained herein may be reproduced in any shape or form without the express written consent of Harbor Freight Tools. Diagrams within this manual may not be drawn proportionally. Due to continuing improvements, actual product may differ slightly from the product described herein.
Tools required for assembly and service may not be included.

⚠WARNING

Read this material before using this product.
Failure to do so can result in serious injury.
SAVE THIS MANUAL.

Table of Contents

Safety	2	Maintenance	8
Specifications	4	Parts List and Diagram	10
Setup	5	Warranty	12
Operation.....	6		

SAFETY



SETUP

WARNING SYMBOLS AND DEFINITIONS

	This is the safety alert symbol. It is used to alert you to potential personal injury hazards. Obey all safety messages that follow this symbol to avoid possible injury or death.
	Indicates a hazardous situation which, if not avoided, will result in death or serious injury.
	Indicates a hazardous situation which, if not avoided, could result in death or serious injury.
	Indicates a hazardous situation which, if not avoided, could result in minor or moderate injury.
	Addresses practices not related to personal injury.

OPERATION

IMPORTANT SAFETY INSTRUCTIONS

WARNING

When using electric gardening appliances, basic safety precautions should always be followed to reduce the risk of fire, electric shock, and personal injury, including the following:

READ ALL INSTRUCTIONS

Battery Precautions

1. Do not charge appliance in rain, or in wet locations.
2. Do not use battery-operated appliance in rain.
3. Use only the specified battery pack or an identical replacement.
4. Do not dispose of the battery in a fire. The cell may explode. Check with local codes for possible special disposal instructions.
5. Do not open or mutilate the battery. Released electrolyte is corrosive and may cause damage to the eyes or skin. It may be toxic if swallowed.
6. Exercise care in handling batteries in order not to short the battery with conducting materials such as rings, bracelets, and keys. The battery or conductor may overheat and cause burns.

MAINTENANCE

Lithium Battery Safety Warnings




LITHIUM BATTERIES STORE A LARGE AMOUNT OF ENERGY AND WILL VENT FIRE OR EXPLODE IF MISTREATED:

1. **Keep Battery Pack dry.**

2. **DO NOT DO ANY OF THE FOLLOWING TO THE BATTERY PACK:**
 - a. **Open,**
 - b. **Drop,**
 - c. **Short-circuit,**
 - d. **Puncture,**
 - e. **Incinerate, or**
 - f. **Expose to temperatures greater than 140°F.**
3. Charge Battery Pack only according to its Charger's instructions.
4. Inspect Battery Pack before every use; do not use or charge if damaged.

Personal Safety

1. **Follow all guidelines regarding chemicals sprayed, including MSDS instructions and EPA regulations.**
2. Dress Properly - Do not wear loose clothing or jewelry. They can be caught in moving parts. Use of rubber gloves and substantial footwear is recommended when working outdoors. Wear protective hair covering to contain long hair.
3.  Wear ANSI-approved safety goggles and heavy-duty work gloves. Use face or dust mask if operation is dusty.
4. Avoid Unintentional Starting - Be sure switch is off when installing battery.
5. Do not Overreach - Keep proper footing and balance at all times.
6. Stay Alert - Watch what you are doing. Use common sense. Do not operate appliance when you are tired.

Gardening Appliance Use and Care

1. **Avoid Dangerous Environment - Do not use appliances in damp or wet locations.**
2. **Do not Use In Rain.**
3. **Keep Children Away - All visitors should be kept at a distance from work area.**
4. When servicing use only identical replacement parts.
5. Use Right Appliance - Do not use appliance for any job except that for which it is intended.
6. Do not Force Appliance - It will do the job better and with less likelihood of injury at the rate for which it was designed.
7. Store Idle Appliances Indoors - When not in use, appliances should be stored indoors in dry, and high or locked-up place - out of reach of children.
8. Maintain Appliance With Care. Follow instructions for lubricating and changing accessories. Inspect appliance cord periodically, and if damaged, have it repaired by an authorized service facility. Inspect extension cords periodically and replace if damaged. Keep handles dry, clean, and free from oil and grease.
9. Check Damaged Parts - Before further use of the appliance, a guard or other part that is damaged should be carefully checked to determine that it will operate properly and perform its intended function. Check for alignment of moving parts, binding of moving parts, breakage of parts, mounting, and any other condition that may affect its operation. A guard or other part that is damaged should be properly repaired or replaced by a qualified technician unless indicated elsewhere in this manual.

Vibration Hazard

This appliance vibrates during use. Repeated or long-term exposure to vibration may cause temporary or permanent physical injury, particularly to the hands, arms and shoulders. To reduce the risk of vibration-related injury:

1. Anyone using vibrating appliances regularly or for an extended period should first be examined by a doctor and then have regular medical check-ups to ensure medical problems are not being caused or worsened from use. Pregnant women or people who have impaired blood circulation to the hand, past hand injuries, nervous system disorders, diabetes, or Raynaud's Disease should not use this appliance. If you feel any symptoms related to vibration (such as tingling, numbness, and white or blue fingers), seek medical advice as soon as possible.
2. Do not smoke during use. Nicotine reduces the blood supply to the hands and fingers, increasing the risk of vibration-related injury.
3. Wear suitable gloves to reduce the vibration effects on the user.
4. Use appliances with the lowest vibration when there is a choice between different processes.
5. Include vibration-free periods each day of work.
6. Grip appliance as lightly as possible (while still keeping safe control of it). Let the appliance do the work.
7. To reduce vibration, maintain the appliance as explained in this manual. If any abnormal vibration occurs, stop use immediately.

General Safety

1. **Use only for water or water-based fertilizers, herbicides, pesticides and sealers. Do not use to spray combustible or corrosive chemicals.**
2. **Follow all guidelines regarding chemicals sprayed, including MSDS instructions and EPA regulations.**
3. Do not point the Sprayer at yourself, other people or animals.
4. Industrial applications must follow OSHA requirements.
5. Make sure the liquid used in the Sprayer is not dirty, sandy or viscous.
6. This product is not a toy. Do not allow children to play with or near this item.
7. Inspect before every use; do not use if parts are loose or damaged.
8. Do not use appliance for other than intended use.
9. Maintain labels and nameplates on the appliance. These carry important safety information. If unreadable or missing, contact Harbor Freight Tools for a replacement.
10. The warnings, precautions, and instructions discussed in this instruction manual cannot cover all possible conditions and situations that may occur. It must be understood by the operator that common sense and caution are factors which cannot be built into this product, but must be supplied by the operator.



SAVE THESE INSTRUCTIONS.

Specifications

Battery Type	Bauer 20V Li-ion 57007 (sold separately)
Charger Type	Bauer 20V Li-ion 57006 (sold separately)
Tank Capacity	1/2 Gallon (2 Liter)

Setup - Before Use:



Read the **ENTIRE IMPORTANT SAFETY INSTRUCTIONS** section at the beginning of this manual including all text under subheadings therein before set up or use of this product.

WARNING

TO PREVENT SERIOUS INJURY FROM ACCIDENTAL OPERATION:

Make sure that the Power Switch/Trigger is in the off-position and remove the Battery Pack before performing any procedure in this section.

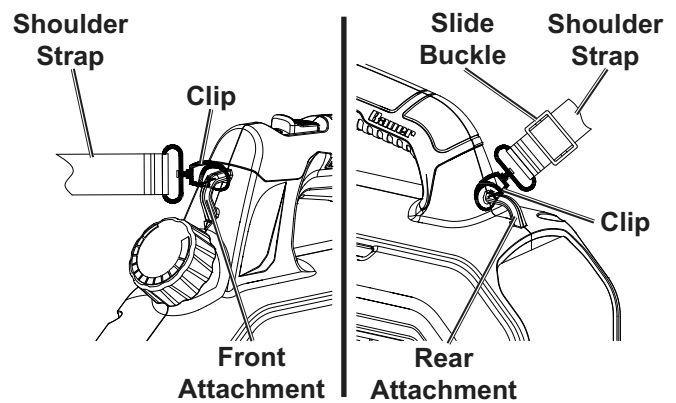
Note: For additional information regarding the parts listed in the following pages, refer to *Parts List and Diagram* on page 10.

Charging Battery Pack

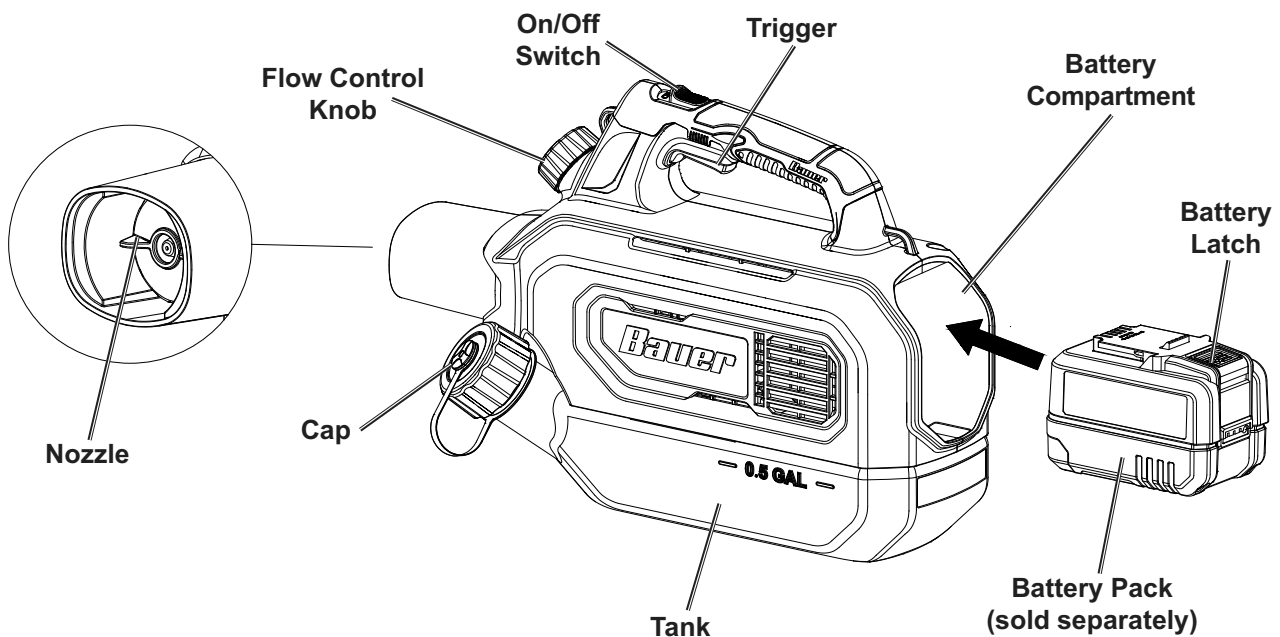
Charge Battery after unpacking and before using this tool. Follow instructions included with battery charger (sold separately)

Attaching the Shoulder Strap

1. Attach the spring loaded Clips on either end of the Shoulder Strap to the Front and Rear Attachment points on the Fogger.
2. Use the Slide Buckle to adjust the Shoulder Strap to the desired length that will position the Fogger in the most ideal ergonomic position for the operator. Slide the cushion on the Shoulder Strap to allow it to rest on your shoulder.



Functions



Operating Instructions



Read the **ENTIRE IMPORTANT SAFETY INFORMATION** section at the beginning of this manual including all text under subheadings therein before set up or use of this product.

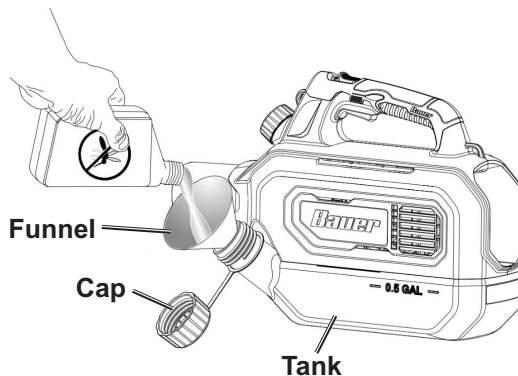
SAFETY

Filling the Tank

WARNING! TO PREVENT SERIOUS INJURY:

Remove the Battery Pack from the Fogger prior to filling the tank. Do not allow any corrosive or conductive fluids to get inside the Battery Pack. Wipe up any spills before inserting the Battery Pack into the Fogger. Always follow the chemical manufacturer's instructions printed on their product label.

1. Remove the Cap from the Tank, and place a Funnel in the neck of the Tank.
2. Fill the Tank with the desired chemical and water solution directly into the Tank (up to 1/2 Gallon / 2 liters), or you may use a premixed solution from a separate container. The chemical / water solution must meet the following conditions:
 - a. The chemical / water solution must be as thin as water; thicker solutions will not spray properly from the Fogger.
 - b. Do not overfill the Tank. The Fogger will not operate properly if the Tank is overfilled (do not exceed the max fill line).



3. Replace the Cap onto the Tank and tighten securely.
4. Reinstall the Battery Pack.

Note: Be sure to thoroughly clean the Funnel, measuring cup, or any other container used to mix the chemical / water solution.

SETUP

OPERATION

MAINTENANCE

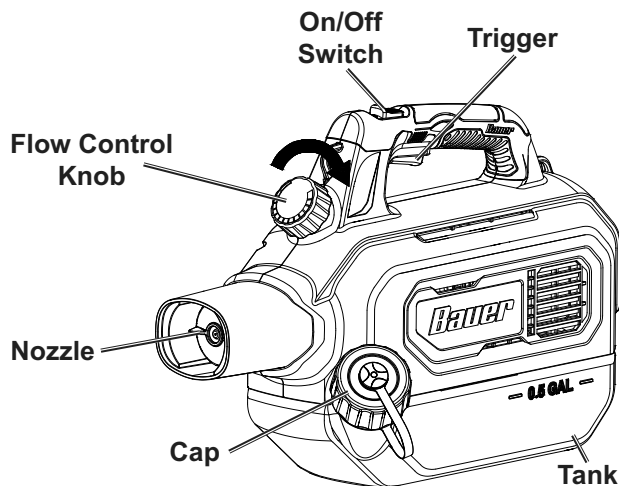
General Operation

WARNING! TO PREVENT SERIOUS INJURY:

Follow all guidelines regarding chemicals sprayed, including MSDS instructions and EPA regulations. Risk of fire or explosion; the area to be fogged must be well ventilated and free from sparks or flames.

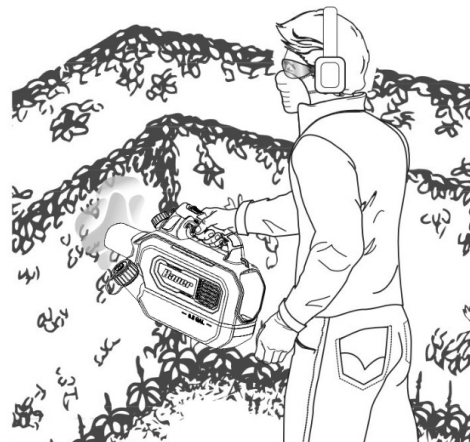
1. Before operating the gardening appliance, put on ANSI-approved safety goggles and other safety gear. Safety goggles and other safety gear are sold separately.
2. Slide the On / Off Switch to the ON position.
3. Point the Nozzle in the direction of the vegetation or objects you wish to fog, and depress the trigger to begin fogging.

Note: Hold the Fogger level. Do not tilt or hold the Fogger at an angle or it may spurt or stream liquid instead of fogging.



4. Use the Flow Control Knob to adjust and regulate the desired amount of fog coming from the nozzle.

5. Slowly sweep the vegetation or objects back and forth with the Fogger, keeping pace with the speed and output of the Fogger for even coverage. **Do not:**
 - a. Smoke, eat, or drink while operating the Fogger.
 - b. Point the Fogger at people or animals. Always point the Fogger downwind.
 - c. Fog on windy days. The mist can be accidentally blown onto yourself, others, or vegetation and objects that should not be fogged.
 - d. Use the Fogger in warmer weather, as excessive heat can evaporate the mist before it settles. Use the Fogger in the early morning or late afternoon / evening to minimize loss.



6. When finished fogging:
 - a. Release the Trigger and slide the On / Off Switch to the OFF position.
 - b. Remove the Battery Pack.
 - c. Open the Cap on the Tank and drain the solution as described in the *Maintenance and Service* section on page 8. Dispose of chemicals properly according to manufacturer guidelines and all local, state, and federal regulations.
 - d. Clean the Fogger prior to storage or switching to another chemical / water solution. Clean the Fogger according to Maintenance Instructions.

Maintenance and Servicing



Procedures not specifically explained in this manual must be performed only by a qualified technician.

WARNING

TO PREVENT SERIOUS INJURY FROM ACCIDENTAL OPERATION:
Make sure that the Power Switch/Trigger is in the off-position and remove Battery Pack before performing any procedure in this section.

TO PREVENT SERIOUS INJURY FROM TOOL FAILURE:
Do not use damaged equipment. If abnormal noise or vibration occurs, have the problem corrected before further use.

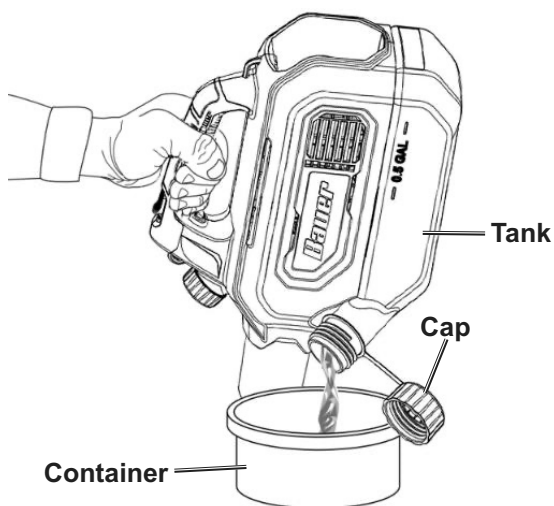
Cleaning, Maintenance, and Lubrication

- BEFORE EACH USE**, inspect the general condition of the tool. Check for:
 - leaking, swollen, or cracked battery pack
 - loose hardware
 - misalignment or binding of moving parts
 - cracked or broken parts
 - any other condition that may affect its safe operation.

- AFTER EVERY USE**, clean the Fogger:
 - Open the Cap on the Tank and drain the contents into the original container or a suitable replacement container. Do not store chemicals in the Tank.

Note: Dispose of chemicals properly according to manufacturer guidelines and all local, state, and federal regulations.

- Fill the Tank one-third full with clean water. Install Battery Pack, point Fogger in safe direction and run Fogger until Tank is empty.
 - Repeat previous step as necessary until Fogger (and its internal filter) are clean. Disconnect Battery Pack and drain the Tank of residual water.
 - Allow tool to air-dry with the Tank open. Once completely dry, reinstall the Cap.
- Wipe external surfaces of the tool with clean cloth.
 - When dry, store Battery Pack, Charger, and tool in dry, indoor area out of reach of children and away from metal objects (i.e., paperclips, coins) to prevent shorting.
 - Li-Ion BATTERY MUST BE RECYCLED OR DISPOSED OF PROPERLY.**
Do not short, incinerate or open battery.



Troubleshooting

Problem	Possible Causes	Likely Solutions
Tool will not start.	<ol style="list-style-type: none"> 1. Battery Pack not properly connected. 2. Battery Pack not properly charged. 3. Battery Pack burnt-out. 4. Internal damage or wear. (Motor or Trigger, for example.) 	<ol style="list-style-type: none"> 1. Remove Battery Pack, make sure there are no obstructions, reinsert the Battery Pack according to its shape (it should only fit one way), and press firmly until the Battery Pack locks in place. 2. Make sure Charger is connected and operating properly. Give enough time for Battery Pack to recharge properly. 3. Dispose of old Battery Pack properly or recycle. Replace Battery Pack. 4. Have technician service tool.
Tool operates slowly or shuts off.	<ol style="list-style-type: none"> 1. Battery Pack wearing out. 2. Solution is too thick. 	<ol style="list-style-type: none"> 1. Dispose of old Battery Pack properly or recycle. Replace Battery Pack. 2. Chemical / water solution must be as thin as water.
Performance decreases over time.	Motor worn or damaged.	Have qualified technician replace motor.
Excessive noise or rattling.	Internal damage or wear. (Motor or bearings, for example.)	Have technician service tool.
Overheating.	Blocked motor housing vents.	Wear ANSI-approved safety goggles and NIOSH-approved dust mask/respirator while blowing dust out of motor using compressed air.
Tank pressure is not building.	<ol style="list-style-type: none"> 1. Tank cap is not screwed tight. 2. O-ring in cap needs to be replaced. 	<ol style="list-style-type: none"> 1. Tighten tank cap. 2. Replace O-ring in cap.
Spray is weak.	<ol style="list-style-type: none"> 1. Filter needs to be cleaned. 2. Solution is too thick. 	<ol style="list-style-type: none"> 1. Clean the filter as described in the <i>Maintenance and Servicing</i> section of this manual. 2. Chemical / water solution must be as thin as water.
Tool spurts or streams liquid instead of fogging.	The Fogger is tilted or being held at an angle, and not being held level.	Hold the Fogger level.



Follow all safety precautions whenever diagnosing or servicing the tool. Disconnect Battery Pack and Charger power supply before service.

PLEASE READ THE FOLLOWING CAREFULLY

THE MANUFACTURER AND/OR DISTRIBUTOR HAS PROVIDED THE PARTS LIST AND ASSEMBLY DIAGRAM IN THIS MANUAL AS A REFERENCE TOOL ONLY. NEITHER THE MANUFACTURER OR DISTRIBUTOR MAKES ANY REPRESENTATION OR WARRANTY OF ANY KIND TO THE BUYER THAT HE OR SHE IS QUALIFIED TO MAKE ANY REPAIRS TO THE PRODUCT, OR THAT HE OR SHE IS QUALIFIED TO REPLACE ANY PARTS OF THE PRODUCT. IN FACT, THE MANUFACTURER AND/OR DISTRIBUTOR EXPRESSLY STATES THAT ALL REPAIRS AND PARTS REPLACEMENTS SHOULD BE UNDERTAKEN BY CERTIFIED AND LICENSED TECHNICIANS, AND NOT BY THE BUYER. THE BUYER ASSUMES ALL RISK AND LIABILITY ARISING OUT OF HIS OR HER REPAIRS TO THE ORIGINAL PRODUCT OR REPLACEMENT PARTS THERETO, OR ARISING OUT OF HIS OR HER INSTALLATION OF REPLACEMENT PARTS THERETO.

Parts List

Part	Description	Qty
1	Front Tube	1
2	Nozzle Assembly	1
2.1	Cap	1
2.2	Nozzle	1
2.3	Seal	1
2.4	O Ring	2
2.5	Valve	1
2.6	Spring	1
2.7	Air Tube	1
2.8	Valve Bar	1
2.9	Pin	1
2.10	Suction Tube Long	1
2.11	Suction Tube Medium	1
2.12	One-Way Valve	1
2.13	Suction Tube Short	1
3	Motor Assembly	1
3.1	PCB	1
3.2	Insert Spring	4
3.3	Copper Strip	1
3.4	Heat Shrink Tube	1
3.5	Seal Plug	1
3.6	Lead Wire Long	1
3.7	Lead Wire Short	1
3.8	Motor	1
3.9	Ring Seal	1
4	Battery Compartment Assembly	1
4.1	Battery Compartment	1
4.2	Screw St4*16	1
5	Push Rod	1
5.1	Axle Sleeve	1
5.2	Tube	1

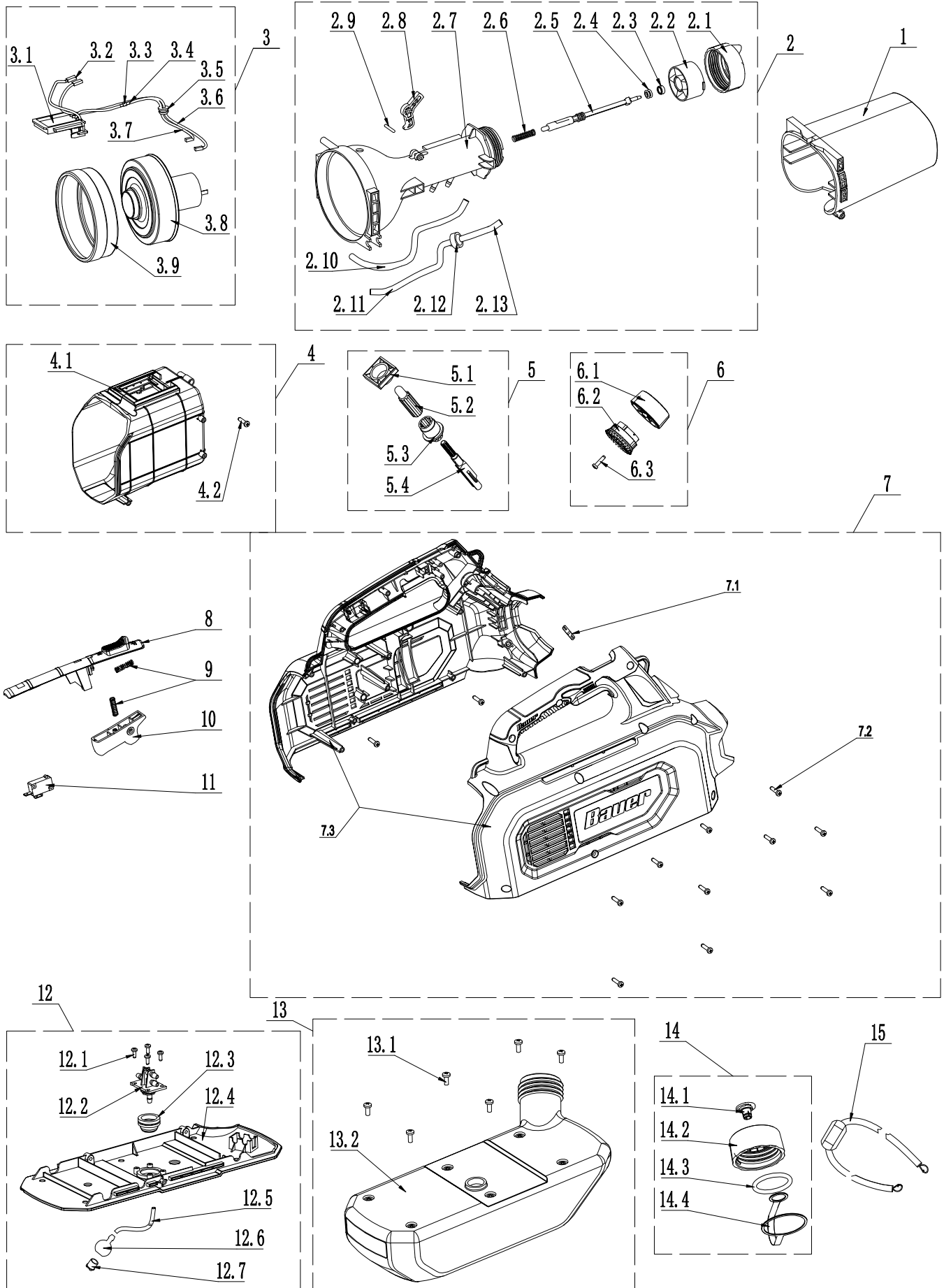
Part	Description	Qty
5.3	Small Gear	1
5.4	Push Rod	1
6	Adjustment Knob Assembly	1
6.1	Flow Control Knob	1
6.2	Large Gear	1
6.3	Screw St4*16	1
7	Housing Assembly	1
7.1	Clip	1
7.2	Screw St4*16	12
7.3	Left & Right Housing	1
8	On/Off Switch	1
9	Push Rod Spring	2
10	Trigger	1
11	Switch	1
12	Base Board Assembly	1
12.1	Screw St3.5*10	4
12.2	Connector	1
12.3	Seal Ring Stopper	1
12.4	Base Board	1
12.5	Silicone Tube	1
12.6	Copper Suction Head	1
12.7	Filter	1
13	Tank Assembly	1
13.1	Screw	6
13.2	Tank	1
14	Tank Cap Assembly	1
14.1	Cap Rivet	1
14.2	Tank Cap	1
14.3	O Ring	1
14.4	Cap Lanyard	1
15	Shoulder Strap	1

Record Product's Serial Number Here: _____

Note: If product has no serial number, record month and year of purchase instead.

Note: Some parts are listed and shown for illustration purposes only, and are not available individually as replacement parts. Specify UPC 193175474353 when ordering parts.

Assembly Diagram



SAFETY

SETUP

OPERATION

MAINTENANCE

Limited 90 Day Warranty

Harbor Freight Tools Co. makes every effort to assure that its products meet high quality and durability standards, and warrants to the original purchaser that this product is free from defects in materials and workmanship for the period of 90 days from the date of purchase. This warranty does not apply to damage due directly or indirectly, to misuse, abuse, negligence or accidents, repairs or alterations outside our facilities, criminal activity, improper installation, normal wear and tear, or to lack of maintenance. We shall in no event be liable for death, injuries to persons or property, or for incidental, contingent, special or consequential damages arising from the use of our product. Some states do not allow the exclusion or limitation of incidental or consequential damages, so the above limitation of exclusion may not apply to you. THIS WARRANTY IS EXPRESSLY IN LIEU OF ALL OTHER WARRANTIES, EXPRESS OR IMPLIED, INCLUDING THE WARRANTIES OF MERCHANTABILITY AND FITNESS.

To take advantage of this warranty, the product or part must be returned to us with transportation charges prepaid. Proof of purchase date and an explanation of the complaint must accompany the merchandise. If our inspection verifies the defect, we will either repair or replace the product at our election or we may elect to refund the purchase price if we cannot readily and quickly provide you with a replacement. We will return repaired products at our expense, but if we determine there is no defect, or that the defect resulted from causes not within the scope of our warranty, then you must bear the cost of returning the product.

This warranty gives you specific legal rights and you may also have other rights which vary from state to state.

Bauer[™]

26677 Agoura Road • Calabasas, CA 91302 • 1-888-866-5797