

Owner's Manual & Safety Instructions

Save This Manual Keep this manual for the safety warnings and precautions, assembly, operating, inspection, maintenance and cleaning procedures. Write the product's serial number in the back of the manual near the assembly diagram (or month and year of purchase if product has no number). Keep this manual and the receipt in a safe and dry place for future reference.

23g

MADDOXTM

SUPERIOR AUTOMOTIVE TOOLS

MEM1-1

12V High Performance Inflator



Visit our website at: <http://www.harborfreight.com>
Email our technical support at: productsupport@harborfreight.com

59624

When unpacking, make sure that the product is intact and undamaged. If any parts are missing or broken, please call 1-888-866-5797 as soon as possible.

Copyright© 2023 by Harbor Freight Tools®. All rights reserved.
No portion of this manual or any artwork contained herein may be reproduced in any shape or form without the express written consent of Harbor Freight Tools. Diagrams within this manual may not be drawn proportionally. Due to continuing improvements, actual product may differ slightly from the product described herein.
Tools required for assembly and service may not be included.

⚠ WARNING






Read this material before using this product.
Failure to do so can result in serious injury.
SAVE THIS MANUAL.

Table of Contents

Safety	2	Maintenance	7
Specifications	5	Parts List and Diagram	10
Operation	6	Warranty	12

MADDOX™ SUPERIOR AUTOMOTIVE TOOLS

WARNING SYMBOLS AND DEFINITIONS

	This is the safety alert symbol. It is used to alert you to potential personal injury hazards. Obey all safety messages that follow this symbol to avoid possible injury or death.
	Indicates a hazardous situation which, if not avoided, will result in death or serious injury.
	Indicates a hazardous situation which, if not avoided, could result in death or serious injury.
	Indicates a hazardous situation which, if not avoided, could result in minor or moderate injury.
	Addresses practices not related to personal injury.

IMPORTANT SAFETY INSTRUCTIONS

General Safety Warnings



WARNING Read all safety warnings and instructions.

Failure to follow the warnings and instructions may result in electric shock, fire and/or serious injury.

Save all warnings and instructions for future reference.

The warnings, precautions, and instructions discussed in this instruction manual cannot cover all possible conditions and situations that may occur. It must be understood by the operator that common sense and caution are factors which cannot be built into this product, but must be supplied by the operator.

1. Do not expose inflator to rain or snow.
2. Do not operate inflator if it has received a sharp blow, been dropped, or otherwise damaged in any way; take it to a qualified serviceman.
3. Do not disassemble inflator; take it to a qualified serviceman when service or repair is required. Incorrect reassembly may result in a risk of electric shock or fire.
4. **WARNING – RISK OF EXPLOSIVE GASES.**
 - a. WORKING IN VICINITY OF A LEAD-ACID BATTERY IS DANGEROUS. BATTERIES GENERATE EXPLOSIVE GASES DURING NORMAL BATTERY OPERATION. FOR THIS REASON, IT IS OF UTMOST IMPORTANCE THAT YOU FOLLOW THE INSTRUCTIONS EACH TIME YOU USE THE INFLATOR.
 - b. To reduce risk of battery explosion, follow these instructions and those published by battery manufacturer and manufacturer of any equipment you intend to use in vicinity of battery. Review cautionary marking on these products and on engine.

5. PERSONAL PRECAUTIONS

- a. Consider having someone close enough by to come to your aid when you work near a lead-acid battery.
- b. Have plenty of fresh water and soap nearby in case battery acid contacts skin, clothing, or eyes.
- c. Wear complete eye protection and clothing protection. Avoid touching eyes while working near battery.
- d. If battery acid contacts skin or clothing, wash immediately with soap and water. If acid enters eye, immediately flood eye with running cold water for at least 10 minutes and get medical attention immediately.
- e. NEVER smoke or allow a spark or flame in vicinity of battery or engine.
- f. Be extra cautious to reduce risk of dropping a metal tool onto battery. It might spark or short-circuit battery or other electrical part that may cause explosion.
- g. Remove personal metal items such as rings, bracelets, necklaces, and watches when working with a lead-acid battery. A lead-acid battery can produce a short-circuit current high enough to weld a ring or the like to metal, causing a severe burn.

6. CONNECTION PRECAUTIONS

- a. Connect and disconnect Clips only after setting any switches to "off" position. Never allow Clips to touch each other.
- b. Attach Clips to battery and chassis as indicated in 7(e) and 7(f).

7. A SPARK NEAR BATTERY MAY CAUSE BATTERY EXPLOSION. TO REDUCE RISK OF A SPARK NEAR BATTERY:

- a. Position cables to reduce risk of damage by hood, door, or moving engine part.
- b. Stay clear of fan blades, belts, pulleys, and other parts that can cause injury to persons.
- c. Check polarity of battery posts. POSITIVE (POS, P, +) battery post usually has larger diameter than NEGATIVE (NEG, N, -) post.
- d. Determine which post of battery is grounded (connected) to the chassis. If negative post is grounded to chassis (as in most vehicles), see (e). If positive post is grounded to the chassis, see (f).
- e. For negative-grounded vehicle, connect POSITIVE (RED) Clip from inflator to POSITIVE (POS, P, +) ungrounded post of battery. Connect NEGATIVE (BLACK) Clip to vehicle chassis or engine block away from battery. Do not connect Clip to carburetor, fuel lines, or sheet-metal body parts. Connect to a heavy gauge metal part of the frame or engine block.

- f. For positive-grounded vehicle, connect NEGATIVE (BLACK) Clip from inflator to NEGATIVE (NEG, N, -) ungrounded post of battery. Connect POSITIVE (RED) Clip to vehicle chassis or engine block away from battery. Do not connect Clip to carburetor, fuel lines, or sheet-metal body parts. Connect to a heavy gauge metal part of the frame or engine block.
- g. When disconnecting inflator, turn switches to off, remove Clip from vehicle chassis, and then remove Clip from battery terminal.



8. Wear ANSI-approved splash-resistant safety goggles and heavy-duty rubber work gloves whenever connecting, disconnecting, or working near battery. Battery acid can cause permanent blindness.

9. Maintain labels and nameplates on the inflator. These carry important safety information. If unreadable or missing, contact Harbor Freight Tools for a replacement.
10. This product is not a toy. Keep it out of reach of children.
11. Have your inflator serviced by a qualified repair person using only identical replacement parts. This will ensure that the safety of the Inflator is maintained.
12. Do not use inflator while you are tired or under the influence of drugs, alcohol or medication. A moment of inattention while operating Inflator may result in serious personal injury.
13. People with pacemakers should consult their physician(s) before use. Electromagnetic fields in close proximity to heart pacemaker could cause pacemaker interference or pacemaker failure. In addition, people with pacemakers should:
 - Avoid operating alone.
 - Properly maintain and inspect to avoid electrical shock.
 - Properly ground power cord. Ground Fault Circuit Interrupter (GFCI) should also be implemented – it prevents sustained electrical shock.
14. The warnings, precautions, and instructions discussed in this instruction manual cannot cover all possible conditions and situations that may occur. It must be understood by the operator that common sense and caution are factors which cannot be built into this product, but must be supplied by the operator.

Air Inflator Safety Warnings

1. **Risk of injury - do not direct air stream at people or animals.**
2. **Do not use to supply breathing air.**
3. **Do not leave Inflator unattended for an extended period while connected to power source. Disconnect Inflator after working.**
4. Start and run the vehicle engine during inflation period.
5. Keep Inflator well-ventilated. Do not cover inflator during use.
6. Do not remove the valve cover or adjust internal components.
7. Inflator head gets hot during operation. Do not touch it or allow children nearby during or immediately following operation.
8. Do not use the air hose to move the inflator.
9. All air line components, including hoses, pipe, connectors, filters, etc., must be rated for a minimum working pressure of 150 PSI, or 150% of the maximum system pressure, whichever is greater.
10. Operate unit on level surface.
11. **This Inflator will automatically shut off on overload or under excessive heat.** Should this occur, turn the Power Switch to its "OFF" position. Allow Inflator to cool for 20 minutes. Reset Circuit Breaker if necessary. Then, turn the Switch to its "ON" position to resume work.

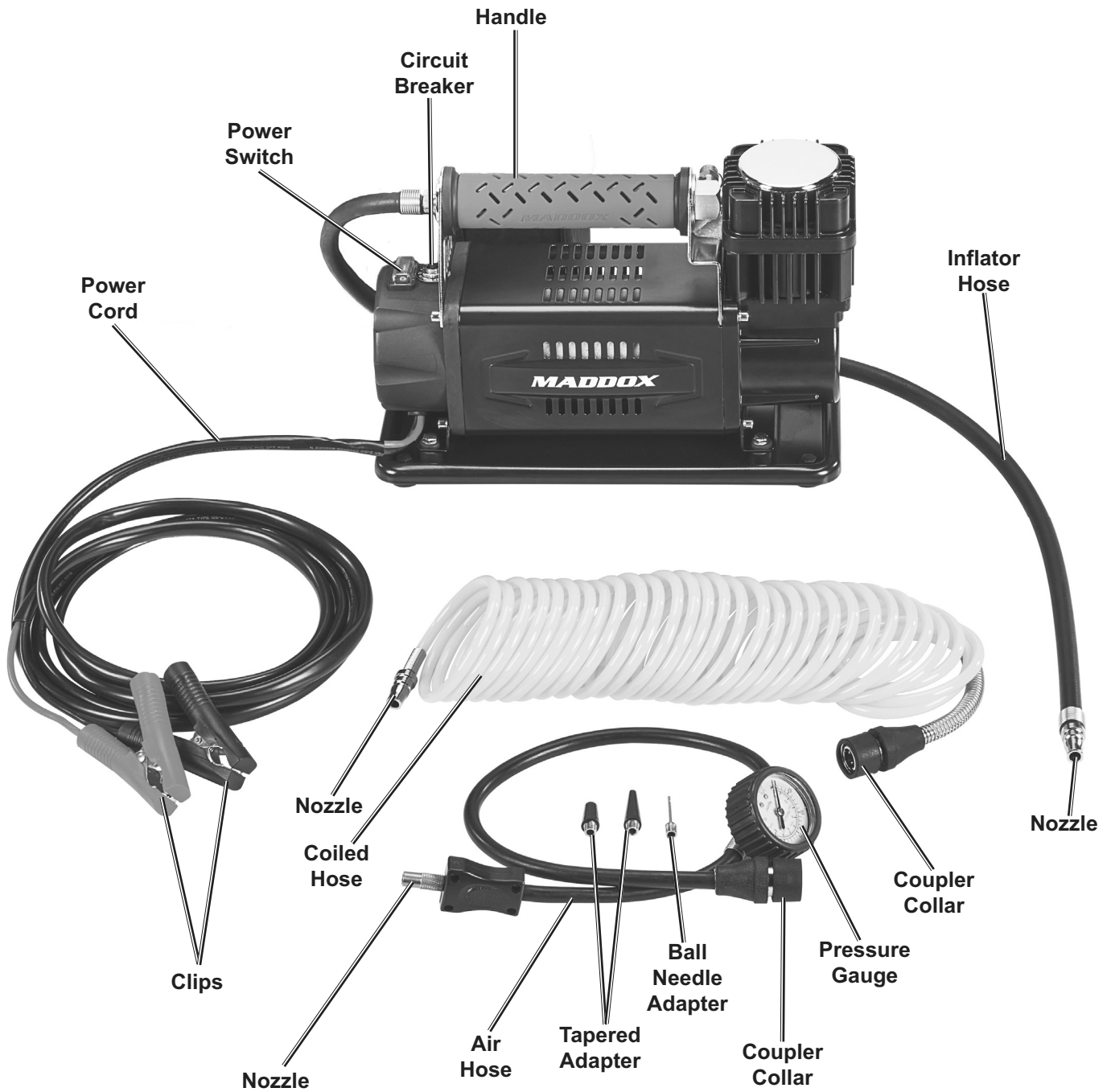


SAVE THESE INSTRUCTIONS.

Specifications

Electrical Rating	12VDC
Maximum Air Pressure	120 PSI
Max Airflow	3 CFM

Components and Controls



Operating Instructions



Read the **ENTIRE IMPORTANT SAFETY INFORMATION** section at the beginning of this manual including all text under subheadings therein before set up or use of this product.

1. Turn the Power Switch to the "OFF" position.
 2. Connect the Coiled Hose to the Inflator Hose.
 - a. Pull back on the Collar of the Coiled Hose's Coupler.
 - b. Firmly insert the Inflator Hose Nozzle into the Coupler.
 - c. Release the Collar, which will snap the Nozzle into place.
 - d. Pull lightly on both hoses to ensure a proper connection.
 3. Attach the other end of the Coiled Hose to the Air Hose using the same method described in step 2.
 4. If necessary, select a Nozzle Adapter and thread Adapter onto Air Hose Nozzle.
 5. Turn on the car engine.
- WARNING! TO PREVENT SERIOUS INJURY: DO NOT TOUCH POSITIVE AND NEGATIVE CLIPS TOGETHER.**
6. Attach the Clips on the Power Cord onto the 12V automotive battery (not included) power source.
 - a. Connect the RED Clip of the Inflator to the positive (+) terminal of the battery.
 - b. Connect the BLACK Clip of the Inflator to a good ground source on the engine block.
- WARNING! TO PREVENT SERIOUS INJURY: Do NOT connect Black Clip to the other battery terminal.**
- Note:** Connect to a 12VDC power source only.
7. Make sure the tire valve stem is clean and free of dirt.
 8. Turn the Inflator Switch to the "ON" position.
 9. Holding the Air Hose Nozzle, connect the Nozzle to the valve stem of the item to be inflated.
 10. Monitor the Pressure Gauge carefully to avoid over-inflating the item.
 11. Continue inflating until the recommended pressure is reached.
 12. Do not operate for longer than 40 minutes at 40 PSI or greater. Inflator will automatically shut off to prevent overheating.
- Note:** If Inflator automatically shuts off, turn the Power Switch to its "OFF" position. Allow Inflator to cool for 20 minutes. If necessary, reset Circuit Breaker by pushing down on the Breaker. Then, turn the Switch to its "ON" position to resume work.- 13. When finished, turn the Switch to the "OFF" position.
- 14. Remove the Nozzle from the object.
- 15. Verify pressure with a pressure gauge (not included), then replace the valve cap where applicable.
- 16. If the pressure is low, repeat the steps beginning with Step 8.

CAUTION! Do not inflate beyond the manufacturer's inflation rating.

 17. When finished, turn off the car engine and remove Clips.

WARNING! TO PREVENT SERIOUS INJURY: Do not touch the metal parts of the Inflator and hoses during use.- 18. Allow the Inflator to cool.
- 19. Disconnect hoses. Wipe down unit and replace into the included storage bag.
- 20. Store in a clean, dry, safe location out of the reach of children.

MADDOX™
SUPERIOR AUTOMOTIVE TOOLS

Maintenance and Servicing



Procedures not specifically explained in this manual must be performed only by a qualified technician.

!WARNING

TO PREVENT INJURY FROM ACCIDENTAL OPERATION:

Turn the Switch “OFF” and disconnect from power source before performing any inspection, maintenance, or cleaning procedures.


TO PREVENT SERIOUS INJURY FROM INFLATOR FAILURE:

Do not use damaged equipment. If abnormal noise or vibration occurs, have the problem corrected before further use.

Cleaning, Maintenance, and Lubrication

1. **BEFORE EACH USE**, inspect the general condition of the Inflator. Check for:
 - loose hardware,
 - misalignment or binding of parts,
 - cracked or broken parts,
 - damaged electrical wiring, and
 - any other condition that may affect its safe operation.
2. **AFTER USE**, allow the unit to cool, then wipe external surfaces of the inflator with a clean cloth.
3. Store the Inflator in a clean, dry, safe location out of reach of children and other unauthorized people.
4. **AFTER EVERY 500 HOURS OF REGULAR USE**, replace O-Rings. **Please note:** This work should only be done by a qualified service technician.
5. Remove Filter Cover (31) and then remove Filter. Wash Filter in warm water and liquid soap (no harsh power soap), rinse thoroughly, and let dry.
6. Insert filter back into place and replace Filter Cover.

Troubleshooting

Problem	Possible Causes	Likely Solutions
Decreased output	<ol style="list-style-type: none">1. Not enough air pressure and/or air flow.2. Blocked air inlet filter.3. Air leaking from loose housing or connections.	<ol style="list-style-type: none">1. Check for loose connections.2. Clean air inlet filter.3. Make sure housing and connections are properly assembled and tight.
No output	<ol style="list-style-type: none">1. Poor connection.2. Switch in Off (O) position.3. Overheating.4. Run-down vehicle battery.5. Tripped Circuit Breaker.	<ol style="list-style-type: none">1. Check Positive and Negative Clip position.2. Turn Switch to On (I) position.3. Rest unit for 20 minutes before trying again.4. Replace vehicle battery.5. Reset Circuit Breaker.
 Follow all safety precautions whenever diagnosing or servicing the tool.		

PLEASE READ THE FOLLOWING CAREFULLY

THE MANUFACTURER AND/OR DISTRIBUTOR HAS PROVIDED THE PARTS LIST AND ASSEMBLY DIAGRAM IN THIS MANUAL AS A REFERENCE TOOL ONLY. NEITHER THE MANUFACTURER OR DISTRIBUTOR MAKES ANY REPRESENTATION OR WARRANTY OF ANY KIND TO THE BUYER THAT HE OR SHE IS QUALIFIED TO MAKE ANY REPAIRS TO THE PRODUCT, OR THAT HE OR SHE IS QUALIFIED TO REPLACE ANY PARTS OF THE PRODUCT. IN FACT, THE MANUFACTURER AND/OR DISTRIBUTOR EXPRESSLY STATES THAT ALL REPAIRS AND PARTS REPLACEMENTS SHOULD BE UNDERTAKEN BY CERTIFIED AND LICENSED TECHNICIANS, AND NOT BY THE BUYER. THE BUYER ASSUMES ALL RISK AND LIABILITY ARISING OUT OF HIS OR HER REPAIRS TO THE ORIGINAL PRODUCT OR REPLACEMENT PARTS THERETO, OR ARISING OUT OF HIS OR HER INSTALLATION OF REPLACEMENT PARTS THERETO.

Parts List

Part	Description	Qty
1	Connecting Rod	1
2	Screw, M6X20	1
3	Holder	1
4	Base Board	1
5	Spring Washer, Φ5mm	14
6	Screw, M5X22	4
7	Cylinder Liner	1
8	Seal Ring	1
9	Cylinder Seal Ring	1
10	Radiator Sleeve	1
11	Air Storage Cap	1
12	Cylinder Head	1
13	Air Pipe With Safety Valve	1
14	Decompression Valve	1
15	Air Pipe With Safety Valve	1
16	Handle Laminations	1
17	Screw, M5X65	4
18	Handle Support Plate (Front)	1
19	Nut, M5	6
20	Housing	1
21	Rear Cover	1
22	Handle End Cover (Front)	1
23	Metal Handle With Cover Sleeve	1
24	Handle Support Plate (Back)	1
25	Handle End Cover (Back)	1
26	Screw, M5X18	4

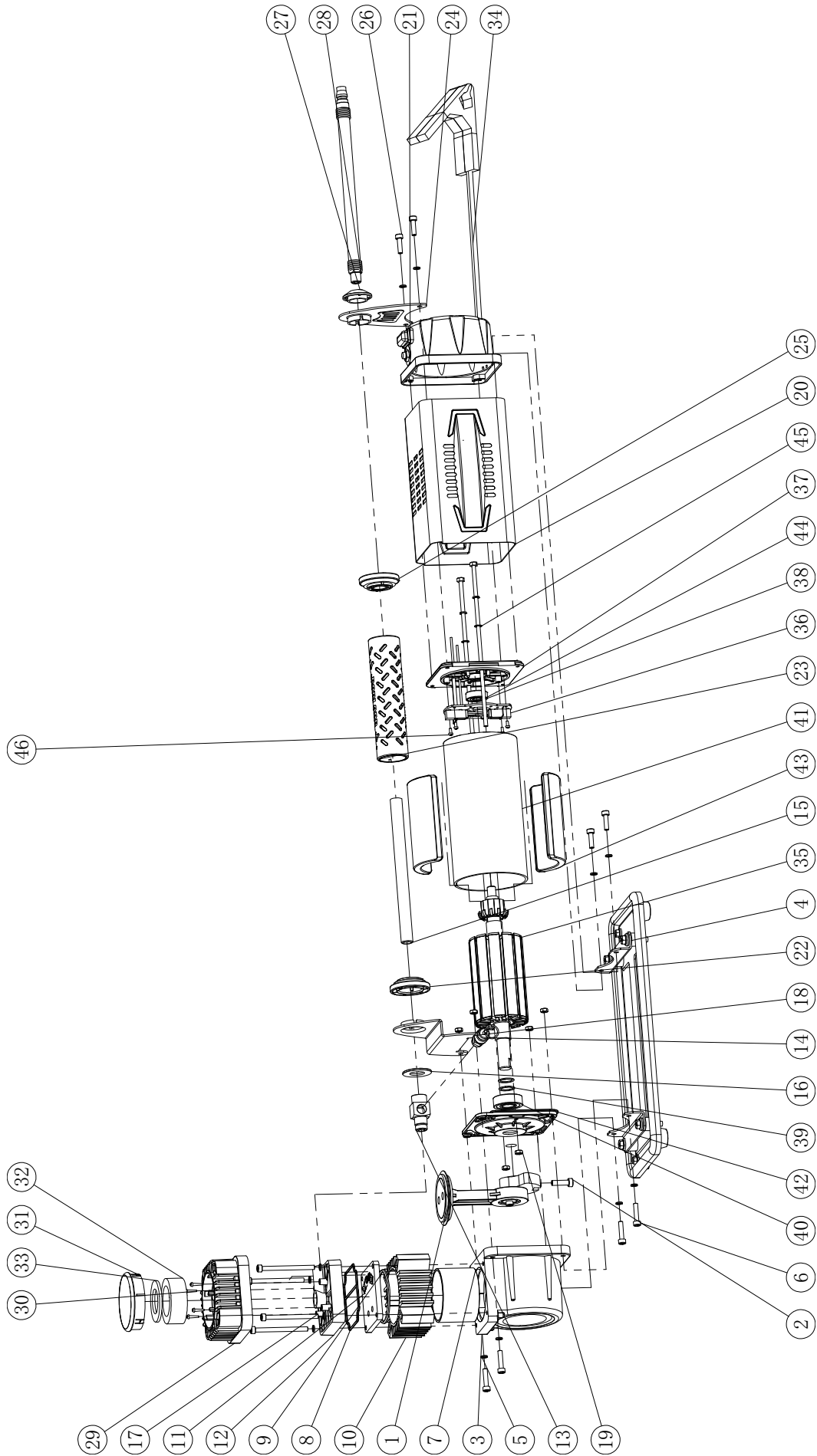
Part	Description	Qty
27	Connection Piece	1
28	Inflator Hose	1
29	Cylinder Head Cover	1
30	Screw, M3X12	4
31	Air Filter Cover	1
32	Filter Sponge	1
33	Filter Felt	1
34	Positive and Negative Clip	1
35	Rotor	1
36	Carbon Brush Holder	1
37	Motor Back Cover	1
38	Bearing 6000z	1
39	Washer	2
40	Bearing 6202z	1
41	Motor Cover	1
42	Motor Front Cover	1
43	Magnetic Tile	2
44	Screw M5x200mm	2
45	Flat Washer Φ5mm	2
46	Screw M3 X 6mm	4
47	Gauge (not shown)	1
48	Tapered Adapter (not shown)	2
49	Ball Needle Adapter (not shown)	1
50	Coiled Air Hose (not shown)	1
51	Air Hose (not shown)	1

Record Product's Serial Number Here: _____

Note: If product has no serial number, record month and year of purchase instead.

Note: Some parts are listed and shown for illustration purposes only, and are not available individually as replacement parts. Specify UPC 193175476838 when ordering parts.

Assembly Diagram



Limited 90 Day Warranty

Harbor Freight Tools Co. makes every effort to assure that its products meet high quality and durability standards, and warrants to the original purchaser that this product is free from defects in materials and workmanship for the period of 90 days from the date of purchase. This warranty does not apply to damage due directly or indirectly, to misuse, abuse, negligence or accidents, repairs or alterations outside our facilities, criminal activity, improper installation, normal wear and tear, or to lack of maintenance. We shall in no event be liable for death, injuries to persons or property, or for incidental, contingent, special or consequential damages arising from the use of our product. Some states do not allow the exclusion or limitation of incidental or consequential damages, so the above limitation of exclusion may not apply to you. THIS WARRANTY IS EXPRESSLY IN LIEU OF ALL OTHER WARRANTIES, EXPRESS OR IMPLIED, INCLUDING THE WARRANTIES OF MERCHANTABILITY AND FITNESS.

To take advantage of this warranty, the product or part must be returned to us with transportation charges prepaid. Proof of purchase date and an explanation of the complaint must accompany the merchandise. If our inspection verifies the defect, we will either repair or replace the product at our election or we may elect to refund the purchase price if we cannot readily and quickly provide you with a replacement. We will return repaired products at our expense, but if we determine there is no defect, or that the defect resulted from causes not within the scope of our warranty, then you must bear the cost of returning the product.

This warranty gives you specific legal rights and you may also have other rights which vary from state to state.

MADDOX™
SUPERIOR AUTOMOTIVE TOOLS

26677 Agoura Road • Calabasas, CA 91302 • 1-888-866-5797