

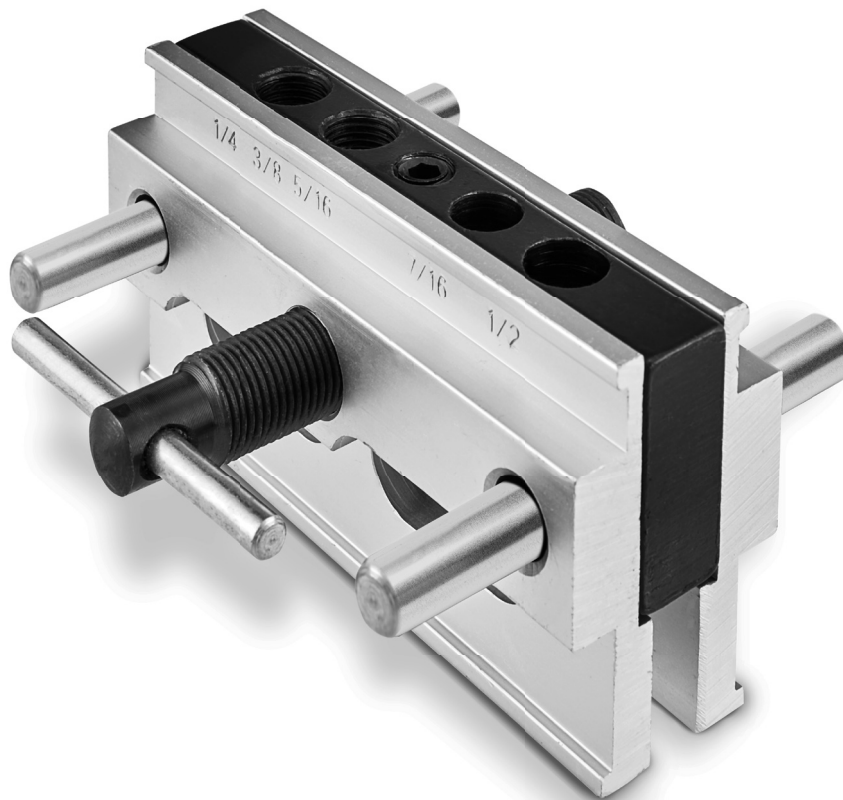
Owner's Manual & Safety Instructions

Save This Manual Keep this manual for the safety warnings and precautions, assembly, operating, inspection, maintenance and cleaning procedures. Write the product's serial number in the back of the manual (or month and year of purchase if product has no number). Keep this manual and the receipt in a safe and dry place for future reference.

22h

WARRIOR®

SELF-CENTERING DOWELING JIG



Visit our website at: <http://www.harborfreight.com>
Email our technical support at: productsupport@harborfreight.com

59789

When unpacking, make sure that the product is intact and undamaged. If any parts are missing or broken, please call 1-888-866-5797 as soon as possible.

Copyright© 2022 by Harbor Freight Tools®. All rights reserved.
No portion of this manual or any artwork contained herein may be reproduced in any shape or form without the express written consent of Harbor Freight Tools. Diagrams within this manual may not be drawn proportionally. Due to continuing improvements, actual product may differ slightly from the product described herein.
Tools required for assembly and service may not be included.

⚠ WARNING

Read this material before using this product.
Failure to do so can result in serious injury.
SAVE THIS MANUAL.

Specifications

Length	4-11/16"
Height	2-3/4"
Width	4-3/8"
Capacity	2-3/4"
Bushing Set	2 each of 3/8", 1/4", 5/16"

IMPORTANT SAFETY INFORMATION

Use Precautions

1. Read this instruction manual completely before using the Self Centering Doweling Jig.
2. This product is not a toy. Do not allow children to play with or near this item.
3. Use as intended only.
4. Inspect before every use; do not use if parts are loose or damaged.
5. Always wear ANSI approved safety goggles when working with tools and equipment. Wear a full face shield if you are producing wood chips.
6. Keep children out of the work area. When not in use, store this product in a location that is out of reach of children.
7. Observe work area conditions. Do not use tools in damp, wet, or poorly lit locations. Don't expose to rain. Keep work area well lit.
8. Do not force the tool. It will do the job better and more safely at the rate for which it was intended. Do not use inappropriate attachments in an attempt to exceed the tool's capacities.
9. Dress properly. Do not wear loose clothing or jewelry as they can be caught in moving parts. Non-skid footwear is recommended. Wear restrictive hair covering to contain long hair.
10. Stay alert. Watch what you are doing. Use common sense. Do not operate any tool when you are tired.
11. Maintain product labels and nameplates. These carry important safety information. If unreadable or missing, contact Harbor Freight Tools for a replacement.

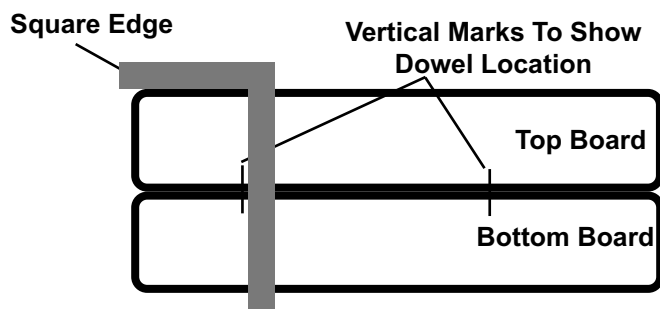
Operating Instructions



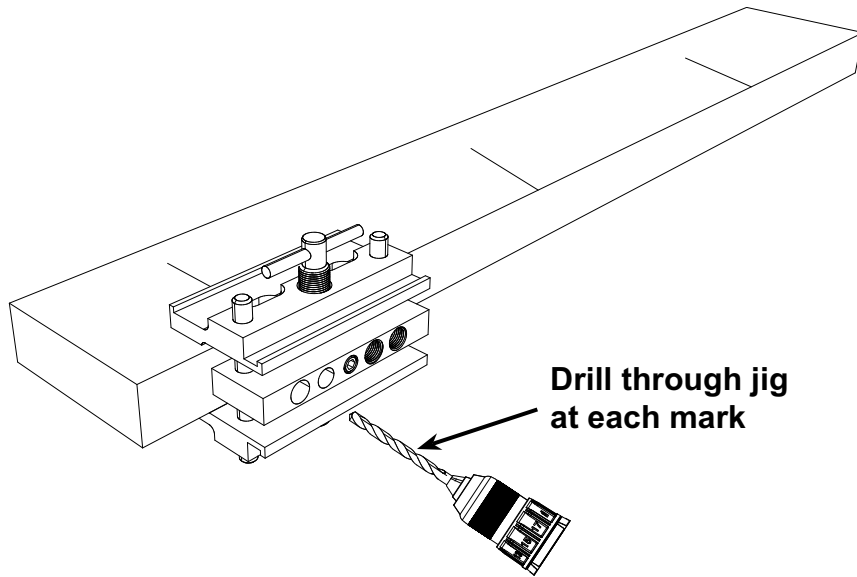
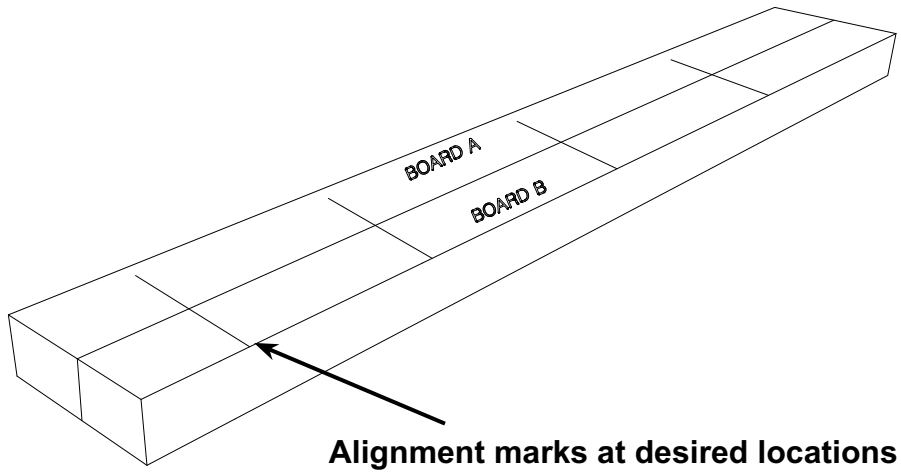
Read the **ENTIRE IMPORTANT SAFETY INFORMATION** section at the beginning of this document including all text under subheadings therein before set up or use of this product.

Note: There are 4 holes along the top of the Jig. Only 2 of the holes accept threaded bushings. The other 2 holes accept 7/16" and 1/2" drill bits.

1. Line up the two boards that are to be connected by the dowels. Set a square (sold separately) on the side of each board, draw a vertical mark to show where the dowels are to be located (see illustration below).

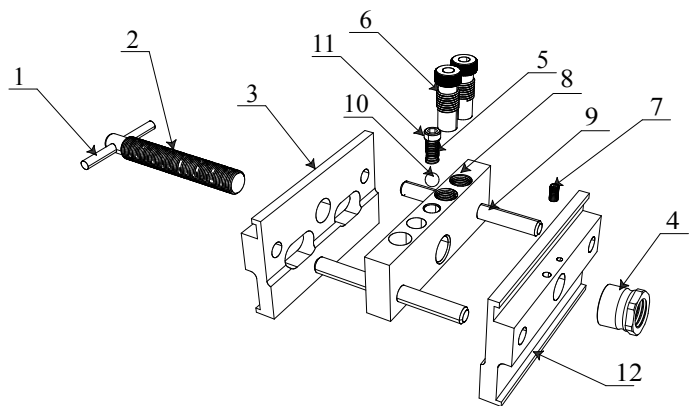


2. Separate the two boards, and clamp the Doweling Jig over the edge of one board. Align the mark on the board with the desired dowel diameter on the Jig (see hole sizes in Guide Block).
3. Insert appropriate bushings, then drill the dowel hole to the desired depth. The drilled hole will be centered in the board edge.
4. Apply glue in the holes and on the dowels. Insert the dowels into the holes and tightly clamp the boards until glue has dried.
5. The Self Centering Doweling Jig can be used to make accurate butt joints, miter joints, and edge joints, as well as acting as a mortising guide.



Parts List and Diagram

Part	Description	Qty
1	Handle	1
2	Screw Rod	1
3	Front Pressing Block	1
4	Screw Nut	1
5	Spring	1
6	Drill Sleeve	6
7	Set Screw	1
8	Guide Block	1
9	Lead Shaft	2
10	Steel Ball	1
11	Spring Screw	1
12	Rear Pressing Block	1



Record Serial Number Here: _____

Note: If product has no serial number, record month and year of purchase instead.

Note: Some parts are listed and shown for illustration purposes only, and are not available individually as replacement parts. Specify UPC 193175485441 when ordering parts.

PLEASE READ THE FOLLOWING CAREFULLY

THE MANUFACTURER AND/OR DISTRIBUTOR HAS PROVIDED THE PARTS LIST AND ASSEMBLY DIAGRAM IN THIS DOCUMENT AS A REFERENCE TOOL ONLY. NEITHER THE MANUFACTURER OR DISTRIBUTOR MAKES ANY REPRESENTATION OR WARRANTY OF ANY KIND TO THE BUYER THAT HE OR SHE IS QUALIFIED TO MAKE ANY REPAIRS TO THE PRODUCT, OR THAT HE OR SHE IS QUALIFIED TO REPLACE ANY PARTS OF THE PRODUCT. IN FACT, THE MANUFACTURER AND/OR DISTRIBUTOR EXPRESSLY STATES THAT ALL REPAIRS AND PARTS REPLACEMENTS SHOULD BE UNDERTAKEN BY CERTIFIED AND LICENSED TECHNICIANS, AND NOT BY THE BUYER. THE BUYER ASSUMES ALL RISK AND LIABILITY ARISING OUT OF HIS OR HER REPAIRS TO THE ORIGINAL PRODUCT OR REPLACEMENT PARTS THERETO, OR ARISING OUT OF HIS OR HER INSTALLATION OF REPLACEMENT PARTS THERETO.

Limited 90 Day Warranty

Harbor Freight Tools Co. makes every effort to assure that its products meet high quality and durability standards, and warrants to the original purchaser that this product is free from defects in materials and workmanship for the period of 90 days from the date of purchase. This warranty does not apply to damage due directly or indirectly, to misuse, abuse, negligence or accidents, repairs or alterations outside our facilities, criminal activity, improper installation, normal wear and tear, or to lack of maintenance. We shall in no event be liable for death, injuries to persons or property, or for incidental, contingent, special or consequential damages arising from the use of our product. Some states do not allow the exclusion or limitation of incidental or consequential damages, so the above limitation of exclusion may not apply to you. THIS WARRANTY IS EXPRESSLY IN LIEU OF ALL OTHER WARRANTIES, EXPRESS OR IMPLIED, INCLUDING THE WARRANTIES OF MERCHANTABILITY AND FITNESS.

To take advantage of this warranty, the product or part must be returned to us with transportation charges prepaid. Proof of purchase date and an explanation of the complaint must accompany the merchandise. If our inspection verifies the defect, we will either repair or replace the product at our election or we may elect to refund the purchase price if we cannot readily and quickly provide you with a replacement. We will return repaired products at our expense, but if we determine there is no defect, or that the defect resulted from causes not within the scope of our warranty, then you must bear the cost of returning the product.

This warranty gives you specific legal rights and you may also have other rights which vary from state to state.

