



**Check total Start-up watts amount before plugging in any equipment.**

## WATTAGE ESTIMATE TABLE

Equipment	Running Watts
<b>Total Running Watts (must be less than 7,250)</b>	
<b>Largest Additional Start-up Watts</b>	
<b>Total Startup Watts needed for all loads (must be less than 9,000)</b>	

**Check total Start-up watts amount before plugging in any equipment.**

### To check the wattage amount:

1. Add up the Running Watts for all items you would like to use at any given time.
2. Make sure that this total is under the 7,250 rated wattage of the generator.
3. Find the single highest starting watts for the selected items and add to the total.
4. Make sure that this total is under the 9,000 maximum rated wattage of the generator.
5. Plug in and turn on products from largest wattage to smallest.

## Typical Product Watts

Check your appliance for actual ratings.

## WATTAGE ESTIMATE CHART

EMERGENCY		
DEVICE	RUNNING WATTS	ADDITIONAL START-UP WATTS
Refrigerator / Freezer	700	1500
Radio	100	0

DEVICE	RUNNING WATTS	ADDITIONAL START-UP WATTS
Computer w/ Monitor	800	0
Electric Clothes Dryer	5500	500
Electric Range	2100	0
Electric Water Heater	2000	0
Light Bulb - 100 Watts	100	0
Microwave - 1000 Watts	1000	200
Sump Pump - 1/2 HP	1000	1100
Television - 27"	400	0
Washing Machine	1100	1100
Well Pump - 1/2 HP	1000	1000

JOB SITE		
DEVICE	RUNNING WATTS	ADDITIONAL START-UP WATTS
Air Compressor - 1/2 HP	1000	1000
Table Saw - 10"	1700	1300
Belt Sander - 3"	1200	1200
Hand Drill - 1/2"	600	600
Halogen Work Light	1000	0
Reciprocating Saw	900	900

LAWN & GARDEN		
DEVICE	RUNNING WATTS	ADDITIONAL START-UP WATTS
Hedge Trimmer	400	400
Pressure Washer	1200	1200
Lawn Mower	1200	1200
Edger	1000	1000

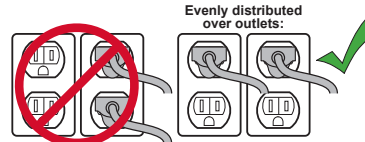
RECREATION		
DEVICE	RUNNING WATTS	ADDITIONAL START-UP WATTS
AM/FM Radio	100	0
Electric Grill	1700	0
Inflator Pump	50	100
CD/DVD Player	100	0
Box Fan - 20"	200	200
Coffee Maker	600	0

HEATING & COOLING		
DEVICE	RUNNING WATTS	ADDITIONAL START-UP WATTS
Central AC - 10,000 BTU	1500	3000
Furnace Fan - 1/2 HP	900	1400
Space Heater	1800	0
Window AC - 10,000 BTU	1200	600

**Note: Wattage listed are estimates for that type of equipment only.  
Check nameplate wattages on all loads before connecting to generator.**

**IF ANY CIRCUIT BREAKERS TRIP:**

1. Make sure that **ALL circuit breakers** are reset before starting the generator again.
2. Adjust the plugs so the loads are shared across outlet circuits.



# PREDATOR<sup>®</sup>

## GENERATORS

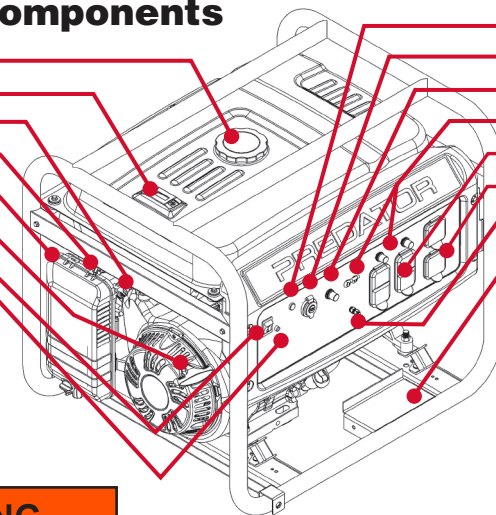
### QUICK START GUIDE

**7,250 / 9,000**  
RUNNING WATTS      MAX. START WATTS

**Items: 59134 & 59206**

## Generator Components

- A.** Fuel Cap
- B.** Fuel Gauge
- C.** Fuel Valve
- D.** Choke
- E.** Air Filter
- F.** Starter Handle
- G.** Power Switch
- H.** CO Indicator



- I.** Low Oil Indicator
- J.** DC Receptacle
- K.** DC Circuit Breaker
- L.** AC Circuit Breakers
- M.** GFCI AC Receptacles
- N.** AC Receptacles
- O.** Ground Terminal
- P.** Battery Mounting Bracket

## ⚠️ WARNING

**To prevent serious injury:  
READ MANUAL BEFORE USE.**



## BEFORE USING:

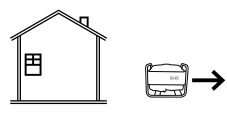
Position generator outside and unplug all electrical loads

### ⚠ DANGER

Using a generator indoors **CAN KILL YOU IN MINUTES**. Generator exhaust contains carbon monoxide. This is a poison you cannot see or smell.



**NEVER** use inside a home or garage, **EVEN IF** doors and windows are open.



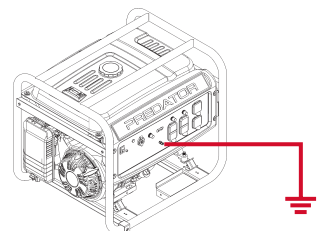
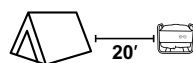
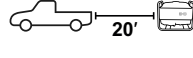
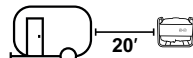
Only use **OUTSIDE** and far away from windows, doors, and vents.

### ⚠ DANGER

Do not use in trailers, truck beds, or tents.



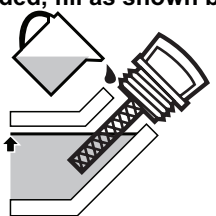
Use at least 20 feet away from people, animals, and structures with exhaust pointed away.



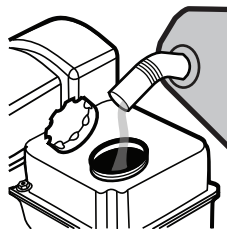
**GROUND GENERATOR TO PREVENT ELECTRIC SHOCK**

### ADD FLUIDS

Check oil and fuel levels  
If needed, fill as shown below



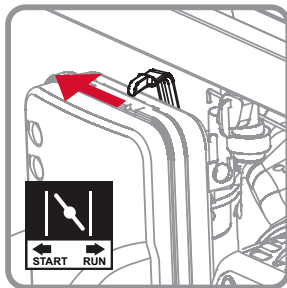
Add oil to engine crankcase  
**WITHOUT OIL GENERATOR WILL NOT START**



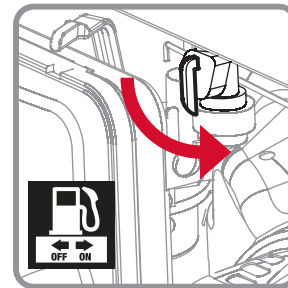
Add fuel to within 1" of the rim of the tank

Note: Use regular Unleaded 87 Octane gasoline. **E85 Ethanol blend will damage engine.**

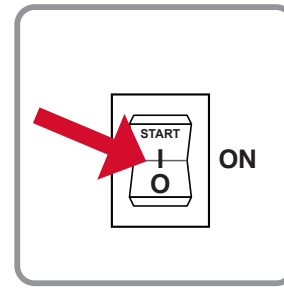
## Manual Starting Procedure



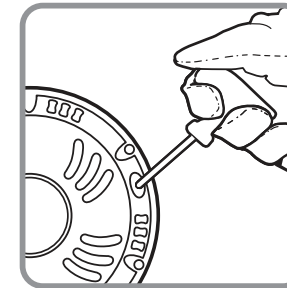
1. CHOKE TO START



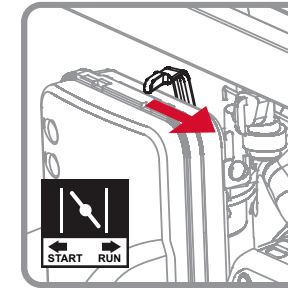
2. OPEN FUEL VALVE



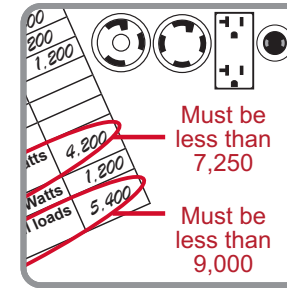
3. TURN SWITCH TO ON



4. PULL STARTER HANDLE

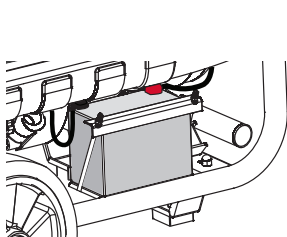


5. CHOKE SLOWLY TO RUN

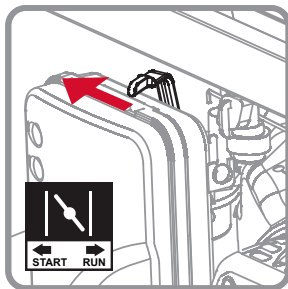


6. CHECK TOTAL WATTS THEN PLUG IN PRODUCTS

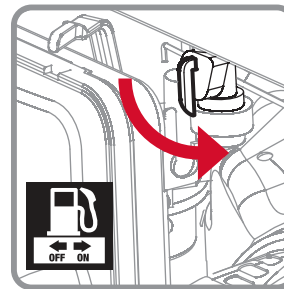
## Electric Starting Procedure



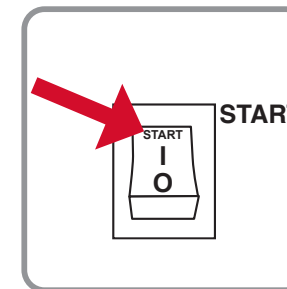
Install and connect 12V battery



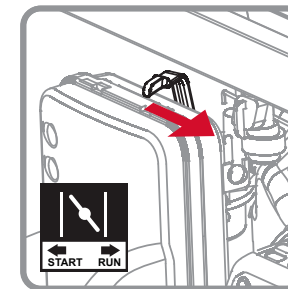
1. CHOKE TO START



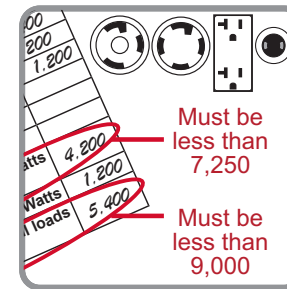
2. OPEN FUEL VALVE



3. TURN SWITCH TO START FOR UP TO 5 SECONDS.



4. CHOKE SLOWLY TO RUN



5. CHECK TOTAL WATTS THEN PLUG IN PRODUCTS