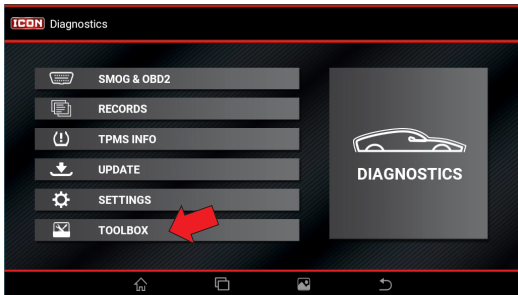


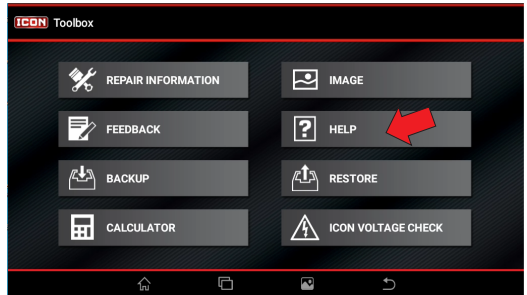
# PROFESSIONAL T7 WIRED DIAGNOSTIC TABLET SCANNER Quick Start Guide

## Access User Manual Online

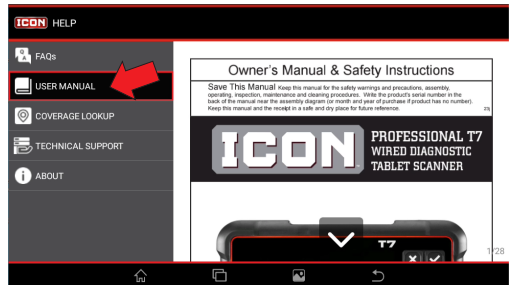
1. Select Toolbox.



2. Select Help.



3. Select User Manual



# Scanner

1. USB Type-C Port (Power/Data)

2. OBD II Diagnostics Cable Port

3. Power (on/off)

4. Charging LED

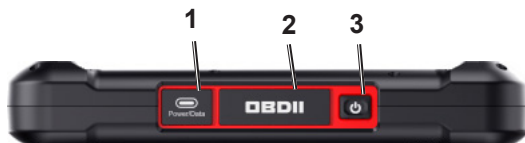
5. Touch Screen

6. Keypad

7. Adjustable Flip-Out Stand

8. Stylus

9. Speakers



# Accessories Included

---

Carrying Case



Scanner



Charger



Stylus



OBDII Diagnostics/DoIP Cable



Charging Cable

# Installation Instructions

---

1. Locate vehicle's Data Link Connector (DLC).
2. Connect OBDII Diagnostics/DoIP Cable to Scanner.
3. Connect OBDII Diagnostics/DoIP Cable to DLC.

