

Owner's Manual & Safety Instructions

Save This Manual Keep this manual for the safety warnings and precautions, assembly, operating, inspection, maintenance and cleaning procedures. Write the product's serial number in the back of the manual near the assembly diagram (or month and year of purchase if product has no number). Keep this manual and the receipt in a safe and dry place for future reference.

4000 LB. CAPACITY

HaulMaster®

Adjustable

PUSH BEAM TROLLEY



Beam not included.

Visit our website at: <http://www.harborfreight.com>

Email our technical support at: tech@harborfreight.com

ITEM 60509

REV 13i

When unpacking, make sure that the product is intact and undamaged. If any parts are missing or broken, please call 1-800-444-3353 as soon as possible.

Copyright© 2012 by Harbor Freight Tools®. All rights reserved.

No portion of this manual or any artwork contained herein may be reproduced in any shape or form without the express written consent of Harbor Freight Tools. Diagrams within this manual may not be drawn proportionally. Due to continuing improvements, actual product may differ slightly from the product described herein. Tools required for assembly and service may not be included.






⚠ WARNING

**Read this material before using this product.
Failure to do so can result in serious injury.
SAVE THIS MANUAL.**

Specifications

Load Capacity	2 Ton
Hanger Thickness	0.437"
Hanger Eyelet	1.54" W x 2.54" H
I-beam Size Required	4" to 8" Width
Minimum Curve Radius	3' 8"

WARNING SYMBOLS AND DEFINITIONS

	This is the safety alert symbol. It is used to alert you to potential personal injury hazards. Obey all safety messages that follow this symbol to avoid possible injury or death.
	Indicates a hazardous situation which, if not avoided, will result in death or serious injury.
	Indicates a hazardous situation which, if not avoided, could result in death or serious injury.
	Indicates a hazardous situation which, if not avoided, could result in minor or moderate injury.
	Addresses practices not related to personal injury.

IMPORTANT SAFETY INFORMATION

DANGER

TO PREVENT SERIOUS INJURY AND DEATH:

Basic Safety Information

- Do not lift more than rated load. Be aware of dynamic loading!** Sudden load movement may briefly create excess load causing product failure. The total load includes the load lifted, the equipment used to lift the load, and all chains or straps used to hold and secure the load.
- Do not operate when load is not centered underneath.**
- Do not operate while trolley restricted from forming a straight line with loading direction.**
- Do not operate a damaged or malfunctioning trolley.** Inspect trolley carefully and test operation before every use.
- Do not lift people or lift loads over people.** Falling loads can injure or kill people.
- Do not operate trolley with anything other than manual power (by hand).**
- Do not remove or cover warning labels and/or tags.** These carry important safety information. If unreadable or missing, contact Harbor Freight Tools for a replacement.
- The warnings, precautions, and instructions discussed in this instruction manual cannot cover all possible conditions and situations that may occur. It must be understood by the operator that common sense and caution are factors which cannot be built into this product, but must be supplied by the operator.

Installation Specific Safety Information

1. Install this trolley only on a metal I-beam between 4" and 8" wide. If installing this trolley on a curved I-Beam, take extra care that the curve in the beam is not more severe than the Minimum Curve Radius, mentioned under Specifications.
Failure to use the proper type of I-Beam may cause the trolley to fall, causing serious injury or death.
2. The beam this trolley is installed on must be flat, level, and smooth. There must be no gaps, bumps or inclines in the beam, and its supports must not interfere with trolley operation.
3. Do not attempt to install the trolley from a ladder or ladders.
4. Each end of the beam this trolley is mounted on must have a secure rail stop to prevent the trolley from rolling off the end.
5. The supporting structure the trolley is mounted to (including beam or crane) must be designed to withstand the loads and forces imposed by the trolley for the rated load.
6. Install in location that allows the operator to move and stay clear of the load.
7. Inspect the trolley after installation but before use.

Inspection, Testing, and Maintenance Specific Safety Information

1. Inspect trolley frequently, at least monthly.
2. More frequent inspections are needed for trolleys that are used heavily.
3. Raise test loads only to the minimum extent needed and stay well clear of load at all times during testing.

Operation Specific Safety Information

1. Wear ANSI-approved safety goggles, ANSI-approved hard hat, and steel-toed work boots during setup and use.
2. This product is not a toy.
Do not allow children to play with or near this item.
3. Use as intended only.
 - Do not use to handle molten material.
 - Do not use for aircraft purposes.
4. Keep hands clear of moving parts.
5. After moving an item with the Push Trolley, secure the item. Do not rely on the Push Trolley to hold it for an extended period.
6. Take care that, during pushing, the load doesn't swing back or come loose, causing serious injury or property damage.



SAVE THESE INSTRUCTIONS.



Installation



Read the **ENTIRE IMPORTANT SAFETY INFORMATION** section at the beginning of this manual including all text under subheadings therein before set up or use of this product.

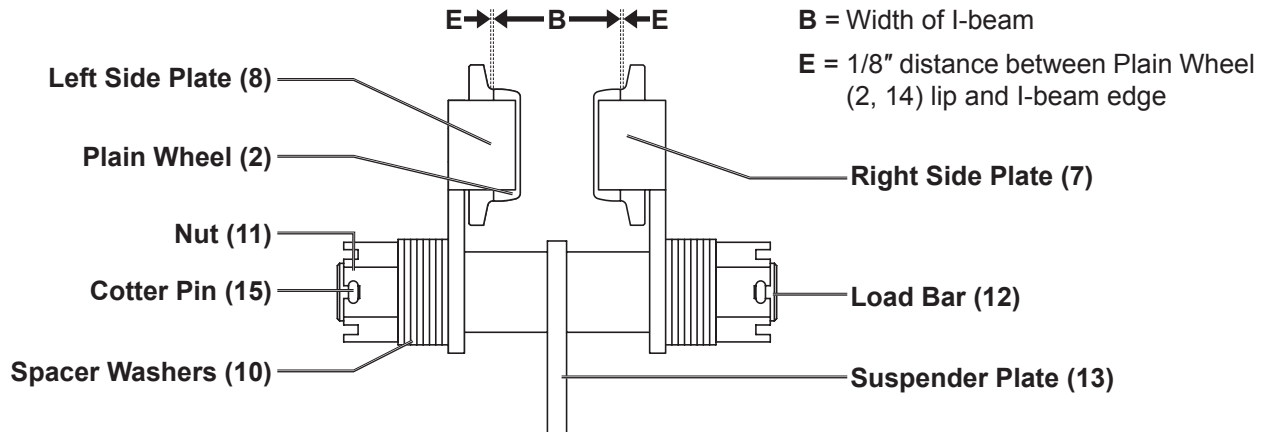


Figure A

1. Measure the width of the I-beam that will have to fit in space "B" above.
2. Measure the current distance of "B" on the pre-assembled Push Trolley.
3. Calculate the number of Spacer Washers (10) that need to be added or removed to accommodate placement of the Push Trolley on the I-beam. Be sure to add 1/8 inch space "E" for each side of the I-beam.
4. Remove Cotter Pins (15), both Nuts (11), and all Spacer Washers.
5. Slide off the Left Side Plate (8) from Load Bar (12).
6. Now, with the two halves of the Push Trolley separated, hold the Right Side Plate (7) and place on the lower section of the I-beam.
7. Slide the Left Side Plate (8) over the Load Bar (12) so that the Plain Wheel (2) rests on the I-beam.
8. Place the estimated number of Spacer Washers (10) on the Load Bar (12).
9. Replace one of the Nuts (11) and tighten.
Note: There should be 1/4 inch play between the Plain Wheels (2 and 14) and the I-beam. If not, add or remove Spacer Washers until there is 1/4 inch play.
10. Place both Nuts on the Load Bar (12) shaft and tighten.
Note: Push the Trolley and see if it moves easily. If not, add more Spacer Washers.
11. Replace the Cotter Pins (15), bending their prongs to each side of their Nut.



Operation Instructions



Read the **ENTIRE IMPORTANT SAFETY INFORMATION** section at the beginning of this manual including all text under subheadings therein before set up or use of this product.

WARNING

TO PREVENT SERIOUS INJURY: Operation of a trolley involves more than moving it. The use of trolleys is subject to certain hazards that cannot be met by mechanical means, but only by the exercise of intelligence, care, common sense, and experience in anticipating the motions that will occur as a result of operating the controls.

WARNING! TO PREVENT SERIOUS INJURY FROM TROLLEY FAILURE:

Do not use damaged equipment. If adjustments or repairs are necessary, or any defects are known, have the problem corrected before further use.

1. Only operate with hand power.
2. Designate a work area that is clean and well-lit. The work area must not allow access by children or pets to prevent distraction and injury.
3. If using with an electric or air powered hoist:
Route the power cord/air hose along a safe route to reach the work area without creating a tripping hazard or exposing the power cord to possible damage. Keep clear of trolley wheels and beam. The power cord/air hose must reach the work area with enough extra length to allow free movement while working.
4. Place the load directly under the Trolley. Do not pick up a load in excess of the rated load appearing on the trolley.
5. Attach appropriate couplings from Suspend Plate (13) to load and hoist up to desired height.
6. **WARNING! Do not carry any load over any person.**
7. **WARNING! Do not carry personnel on the hook or the load.**
8. Push load to move Trolley.

WARNING! If the load does not move when pushed, stop operation and check for obstacles on the I-beam that may be obstructing movement.



Maintenance and Servicing



Procedures not specifically explained in this manual must be performed only by a qualified technician.

WARNING

TO PREVENT SERIOUS INJURY FROM ACCIDENTAL OPERATION:

Remove weight from the trolley before performing any procedure in this section.

TO PREVENT SERIOUS INJURY FROM TOOL FAILURE:

Do not use damaged equipment. If abnormal noise or vibration occurs, have the problem corrected before further use.

Cleaning, Maintenance, and Lubrication

1. **BEFORE EACH USE**, inspect the general condition of the tool. Check for:
 - loose hardware,
 - misalignment or binding of moving parts,
 - cracked or broken parts, and
 - any other condition that may affect its safe operation.
2. **AFTER USE**, wipe external surfaces of the trolley with clean cloth.
3. Periodically grease the Bearings and I-beam surface.

PLEASE READ THE FOLLOWING CAREFULLY

THE MANUFACTURER AND/OR DISTRIBUTOR HAS PROVIDED THE PARTS LIST AND ASSEMBLY DIAGRAM IN THIS MANUAL AS A REFERENCE TOOL ONLY. NEITHER THE MANUFACTURER OR DISTRIBUTOR MAKES ANY REPRESENTATION OR WARRANTY OF ANY KIND TO THE BUYER THAT HE OR SHE IS QUALIFIED TO MAKE ANY REPAIRS TO THE PRODUCT, OR THAT HE OR SHE IS QUALIFIED TO REPLACE ANY PARTS OF THE PRODUCT. IN FACT, THE MANUFACTURER AND/OR DISTRIBUTOR EXPRESSLY STATES THAT ALL REPAIRS AND PARTS REPLACEMENTS SHOULD BE UNDERTAKEN BY CERTIFIED AND LICENSED TECHNICIANS, AND NOT BY THE BUYER. THE BUYER ASSUMES ALL RISK AND LIABILITY ARISING OUT OF HIS OR HER REPAIRS TO THE ORIGINAL PRODUCT OR REPLACEMENT PARTS THERETO, OR ARISING OUT OF HIS OR HER INSTALLATION OF REPLACEMENT PARTS THERETO.

Record Product's Serial Number Here: _____

Note: If product has no serial number, record month and year of purchase instead.

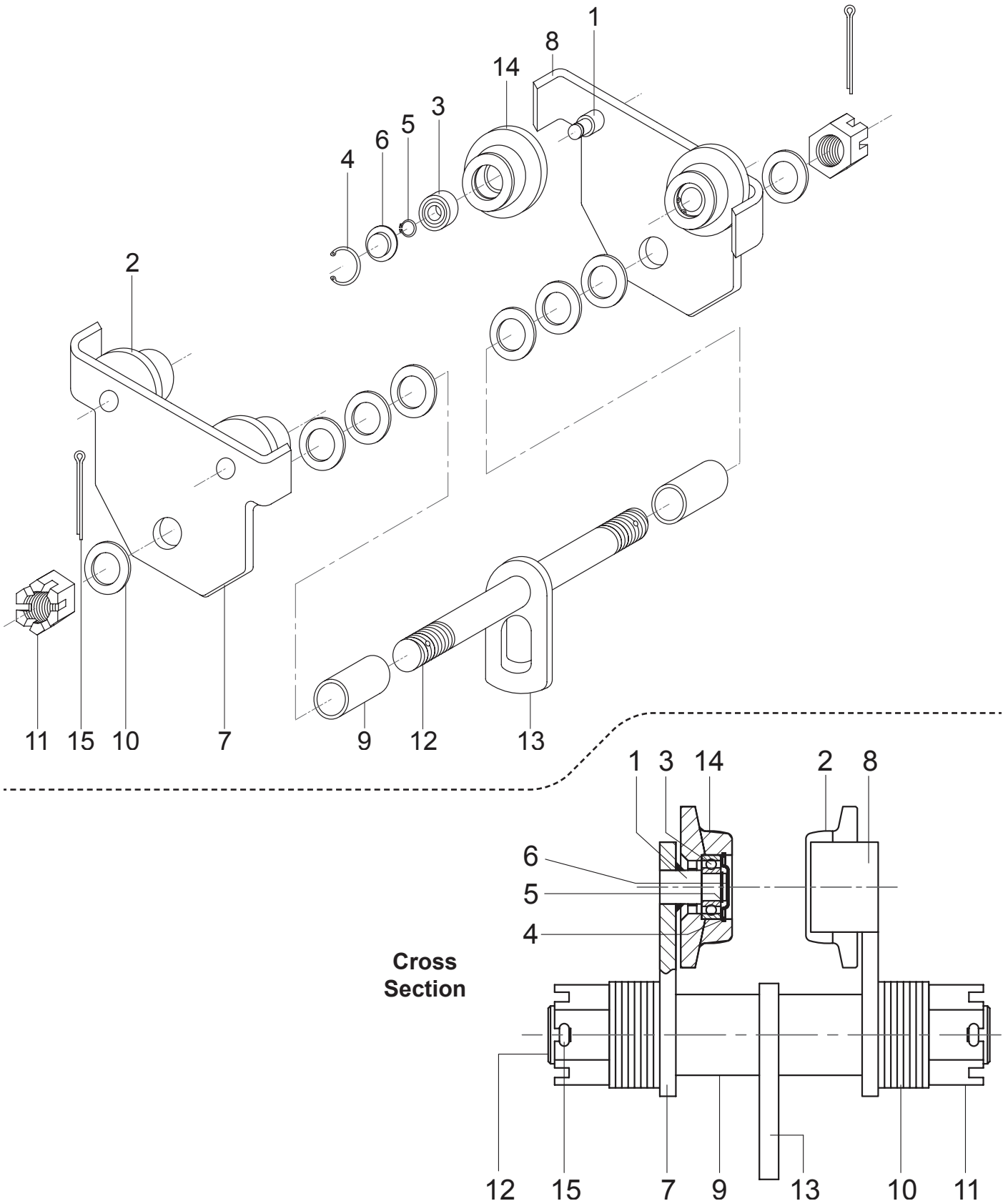
Note: Some parts are listed and shown for illustration purposes only, and are not available individually as replacement parts.

Parts List and Diagram

Part	Description	Qty
1	Axle	4
2	Plain Wheel	2
3	Bearing	4
4	Ret Clip	4
5	C-Clip	4

Part	Description	Qty
6	Spacer	4
7	Right Side Plate	1
8	Left Side Plate	1
9	Spacer	2
10	Spacer Washer	~

Part	Description	Qty
11	Nut	2
12	Load Bar	1
13	Suspender Plate	1
14	Plain Wheel	2
15	Cotter Pin	2



Limited 90 Day Warranty

Harbor Freight Tools Co. makes every effort to assure that its products meet high quality and durability standards, and warrants to the original purchaser that this product is free from defects in materials and workmanship for the period of 90 days from the date of purchase. This warranty does not apply to damage due directly or indirectly, to misuse, abuse, negligence or accidents, repairs or alterations outside our facilities, criminal activity, improper installation, normal wear and tear, or to lack of maintenance. We shall in no event be liable for death, injuries to persons or property, or for incidental, contingent, special or consequential damages arising from the use of our product. Some states do not allow the exclusion or limitation of incidental or consequential damages, so the above limitation of exclusion may not apply to you. THIS WARRANTY IS EXPRESSLY IN LIEU OF ALL OTHER WARRANTIES, EXPRESS OR IMPLIED, INCLUDING THE WARRANTIES OF MERCHANTABILITY AND FITNESS.

To take advantage of this warranty, the product or part must be returned to us with transportation charges prepaid. Proof of purchase date and an explanation of the complaint must accompany the merchandise. If our inspection verifies the defect, we will either repair or replace the product at our election or we may elect to refund the purchase price if we cannot readily and quickly provide you with a replacement. We will return repaired products at our expense, but if we determine there is no defect, or that the defect resulted from causes not within the scope of our warranty, then you must bear the cost of returning the product.

This warranty gives you specific legal rights and you may also have other rights which vary from state to state.



3491 Mission Oaks Blvd. • PO Box 6009 • Camarillo, CA 93011 • (800) 444-3353