

# Owner's Manual & Safety Instructions

**Save This Manual** Keep this manual for the safety warnings and precautions, assembly, operating, inspection, maintenance and cleaning procedures. Write the product's serial number in the back of the manual near the assembly diagram (or month and year of purchase if product has no number). Keep this manual and the receipt in a safe and dry place for future reference.

20g

**600 LB. CAPACITY**

**HaulMaster®**

## HEAVY DUTY TRAILER DOLLY



Visit our website at: <http://www.harborfreight.com>  
Email our technical support at: [productsupport@harborfreight.com](mailto:productsupport@harborfreight.com)

**60533**

When unpacking, make sure that the product is intact and undamaged. If any parts are missing or broken, please call 1-888-866-5797 as soon as possible.

Copyright© 2020 by Harbor Freight Tools®. All rights reserved.  
No portion of this manual or any artwork contained herein may be reproduced in any shape or form without the express written consent of Harbor Freight Tools. Diagrams within this manual may not be drawn proportionally. Due to continuing improvements, actual product may differ slightly from the product described herein.  
Tools required for assembly and service may not be included.

### **⚠ WARNING**

Read this material before using this product.  
Failure to do so can result in serious injury.  
**SAVE THIS MANUAL.**

## Specifications

Capacity	600 lb. tongue weight
Hitch Ball	1-7/8"

## IMPORTANT SAFETY INFORMATION

### Assembly Precautions

1. Assemble only according to these instructions. Improper assembly can create hazards.
2. Wear ANSI-approved safety goggles and heavy-duty work gloves during assembly.
3. Keep assembly area clean and well lit.
4. Keep bystanders out of the area during assembly.
5. Do not assemble when tired or when under the influence of alcohol, drugs or medication.
6. Weight capacity and other product capabilities apply to properly and completely assembled product only. Do not replace the hitch ball with any other size ball or with any different type of attachment point.

### Use Precautions

1. Study, understand, and follow all instructions before operating this device.
2. Use only on hard, level surface.
3. Center load and secure coupler before moving trailer.
4. Keep clear of trailer's path while placing on and removing from Dolly, and while moving.
5. Use as intended only. Do not use for aircraft purposes. Use only to move trailer by hand. Do not use to tow a trailer.
6. Inspect before every use; do not use if parts are loose or damaged.
7. Do not exceed listed weight capacity.  
**Be aware of dynamic loading!**  
Sudden load movement may briefly create excess load causing product failure.
8. Read trailer owner's manual and instruction manual for Tongue Jack (not included) before use.
9. Do not work under trailer while on Dolly.
10. Keep area free of spectators and do not allow anyone on trailer while on Dolly.
11. Use wheel chocks (not included) when raising front of trailer for placement onto Dolly.
12. This product is not a toy. Do not allow children to play with or near this item.
13. Maintain product labels and nameplates. These carry important safety information. If unreadable or missing, contact Harbor Freight Tools for a replacement.



## Assembly Instructions



Read the **ENTIRE IMPORTANT SAFETY INFORMATION** section at the beginning of this document including all text under subheadings therein before set up or use of this product.

**Note:** For additional information regarding the parts listed in the following pages, refer to the Assembly Diagram near the end of this manual.

1. Attach V-Support (14) and Connector (2) to Handle (7) using two Long Bolts (11), Lock Washers (8), and Nuts (13).
2. Attach V-Support and Connector to the Connecting Bar (10) using two Long Bolts, Lock Washers, and Nuts.
3. Attach V-Support and Brace (3) to the Connecting Bar using one Long Bolt, Lock Washer, and Nut.

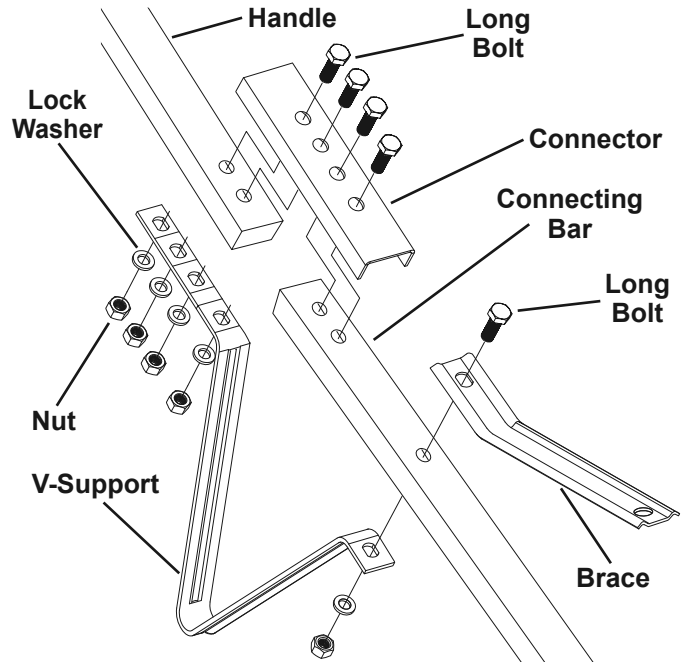


Figure A

4. Slide the end of the Connecting Bar into the bracket on the Axle Base (1) and secure using two Long Bolts, Lock Washers, and Nuts.
5. Attach the free end of the Brace to the frame on the Axle Base using one Short Bolt (12), Lock Washer, and Nut.

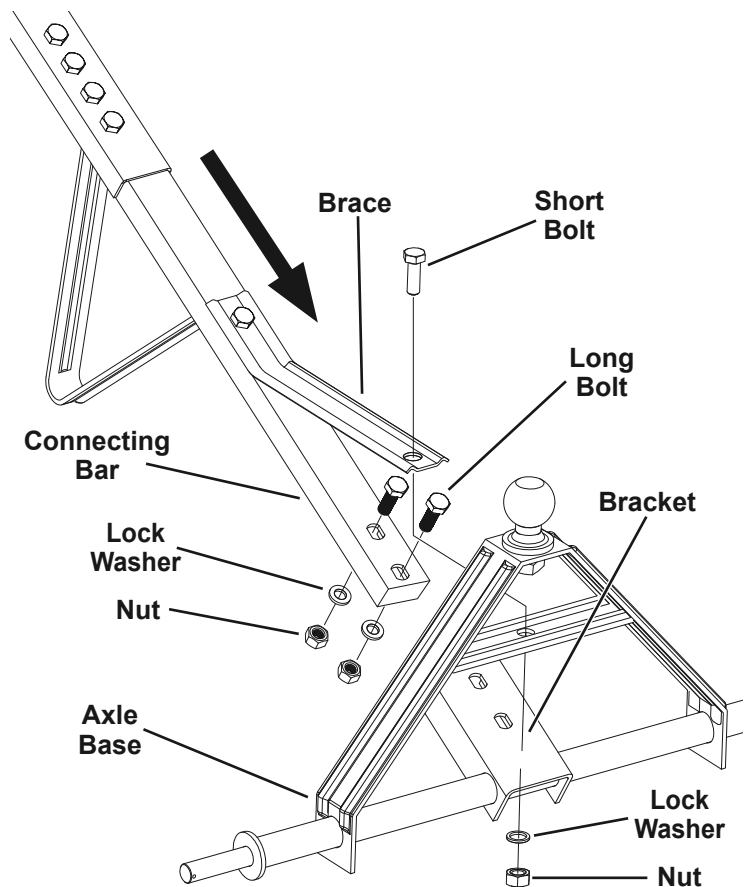


Figure B

## Assembly Instructions (continued)

- Slide the Wheels (4) onto the ends of the axle on the Axle Base and secure in place with Washers (6) and Cotter Pins (5). Bend Cotter Pins into place.

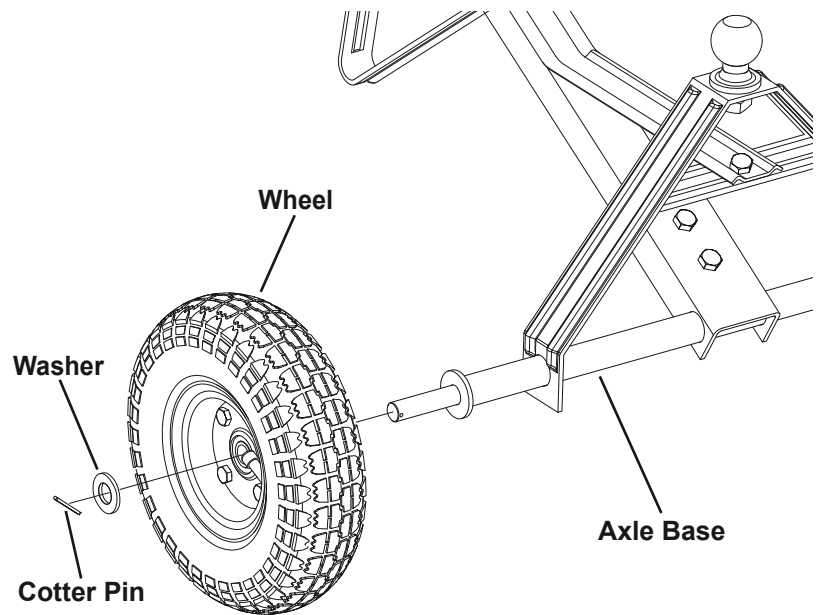


Figure C

## Operation



Read the **ENTIRE IMPORTANT SAFETY INFORMATION** section at the beginning of this document including all text under subheadings therein before set up or use of this product.

- Check Dolly tire inflation and correct as needed. Inflation pressure is marked on tires.
- Chock trailer wheels to keep them from rolling. Chocks sold separately.
- Use a Tongue Jack (sold separately) to raise the trailer's tongue.
- Place Dolly in position under raised trailer coupler. Lower coupler slowly onto Dolly and secure it to Dolly.
- Use Dolly Handle to guide vehicle to location.



## Inspection, Maintenance, and Cleaning



Procedures not specifically explained in this manual must be performed only by a qualified technician.

### **!WARNING**

#### **TO PREVENT SERIOUS INJURY FROM TOOL FAILURE:**

**Do not use damaged equipment. If abnormal noise or vibration occurs, have the problem corrected before further use.**

1. **BEFORE EACH USE**, inspect the general condition of the Trailer Dolly. Check for:
  - broken, cracked, or bent parts.
  - loose or missing parts.
  - any other condition that may affect its safe operation.
2. **AFTER EVERY USE**, wipe with a clean cloth. Remove any dirt, debris, or grease from the Coupler Ball. Store the Trailer Dolly in a safe, dry location out of reach of children.
3. **PERIODICALLY**:
  - check and tighten all nuts and bolts.
  - lubricate axle and wheel assemblies.
  - check tire pressure and inflate to pressure marked on tire.

## PLEASE READ THE FOLLOWING CAREFULLY

THE MANUFACTURER AND/OR DISTRIBUTOR HAS PROVIDED THE PARTS LIST AND ASSEMBLY DIAGRAM IN THIS DOCUMENT AS A REFERENCE TOOL ONLY. NEITHER THE MANUFACTURER OR DISTRIBUTOR MAKES ANY REPRESENTATION OR WARRANTY OF ANY KIND TO THE BUYER THAT HE OR SHE IS QUALIFIED TO MAKE ANY REPAIRS TO THE PRODUCT, OR THAT HE OR SHE IS QUALIFIED TO REPLACE ANY PARTS OF THE PRODUCT. IN FACT, THE MANUFACTURER AND/OR DISTRIBUTOR EXPRESSLY STATES THAT ALL REPAIRS AND PARTS REPLACEMENTS SHOULD BE UNDERTAKEN BY CERTIFIED AND LICENSED TECHNICIANS, AND NOT BY THE BUYER. THE BUYER ASSUMES ALL RISK AND LIABILITY ARISING OUT OF HIS OR HER REPAIRS TO THE ORIGINAL PRODUCT OR REPLACEMENT PARTS THERETO, OR ARISING OUT OF HIS OR HER INSTALLATION OF REPLACEMENT PARTS THERETO.

### Parts List and Diagram

#### Parts List

Part	Description	Qty
1	Axle Base	1
2	Connector	1
3	Brace	1
4	Wheel	2
5	Cotter Pin	2
6	Washer	2
7	Handle	1
8	Lock Washer Ø10	8
9	Coupler Ball	1

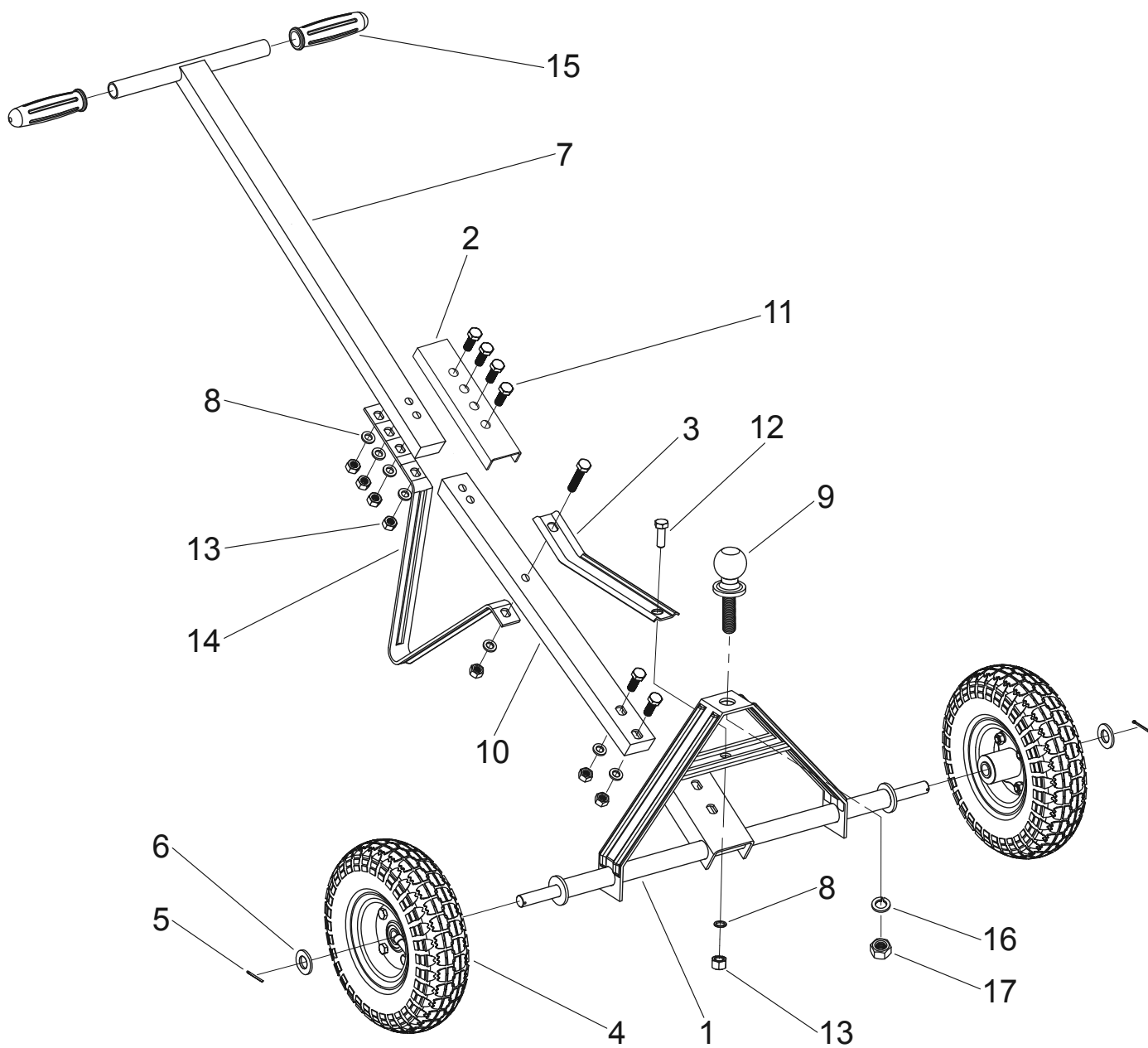
Part	Description	Qty
10	Connecting Bar	1
11	Long Bolt M10x45	7
12	Short Bolt M10x25	1
13	Nut M10	8
14	V-Support	1
15	Handle Grip	2
16	Spring Washer	1
17	Coupler Nut M25	1

Record Serial Number Here: \_\_\_\_\_

**Note:** If product has no serial number, record month and year of purchase instead.

**Note:** Some parts are listed and shown for illustration purposes only, and are not available individually as replacement parts. Specify UPC 193175357472 when ordering parts.

# Assembly Diagram



## Limited 90 Day Warranty

Harbor Freight Tools Co. makes every effort to assure that its products meet high quality and durability standards, and warrants to the original purchaser that this product is free from defects in materials and workmanship for the period of 90 days from the date of purchase. This warranty does not apply to damage due directly or indirectly, to misuse, abuse, negligence or accidents, repairs or alterations outside our facilities, criminal activity, improper installation, normal wear and tear, or to lack of maintenance. We shall in no event be liable for death, injuries to persons or property, or for incidental, contingent, special or consequential damages arising from the use of our product. Some states do not allow the exclusion or limitation of incidental or consequential damages, so the above limitation of exclusion may not apply to you. THIS WARRANTY IS EXPRESSLY IN LIEU OF ALL OTHER WARRANTIES, EXPRESS OR IMPLIED, INCLUDING THE WARRANTIES OF MERCHANTABILITY AND FITNESS.

To take advantage of this warranty, the product or part must be returned to us with transportation charges prepaid. Proof of purchase date and an explanation of the complaint must accompany the merchandise. If our inspection verifies the defect, we will either repair or replace the product at our election or we may elect to refund the purchase price if we cannot readily and quickly provide you with a replacement. We will return repaired products at our expense, but if we determine there is no defect, or that the defect resulted from causes not within the scope of our warranty, then you must bear the cost of returning the product.

This warranty gives you specific legal rights and you may also have other rights which vary from state to state.



26541 Agoura Road • Calabasas, CA 91302 • 1-888-866-5797