

Owner's Manual & Safety Instructions

Save This Manual Keep this manual for the safety warnings and precautions, assembly, operating, inspection, maintenance and cleaning procedures. Write the product's serial number in the back of the manual near the assembly diagram (or month and year of purchase if product has no number). Keep this manual and the receipt in a safe and dry place for future reference.

24e

PITTSBURGH®

1500 LB. CAPACITY ATV/MOTORCYCLE LIFT



Item	60536
Weight Capacity	1,500 lb.
Maximum Height	16-3/4"
Minimum Height	5"

Visit our website at: <http://www.harborfreight.com>
Email our technical support at: productsupport@harborfreight.com

When unpacking, make sure that the product is intact and undamaged. If any parts are missing or broken, please call 1-888-866-5797 as soon as possible.

Copyright© 2013 by Harbor Freight Tools®. All rights reserved.
No portion of this manual or any artwork contained herein may be reproduced in any shape or form without the express written consent of Harbor Freight Tools. Diagrams within this manual may not be drawn proportionally. Due to continuing improvements, actual product may differ slightly from the product described herein. Tools required for assembly and service may not be included.

⚠ WARNING

Read this material before using this product.
Failure to do so can result in serious injury.
SAVE THIS MANUAL.

Table of Contents

Safety	2	Maintenance	9
Specifications	3	Troubleshooting	10
Setup	3	Parts Lists and Assembly Diagrams	12
Operating Instructions	8	Warranty	16







SAFETY

SETUP

OPERATION

MAINTENANCE

WARNING SYMBOLS AND DEFINITIONS

	This is the safety alert symbol. It is used to alert you to potential personal injury hazards. Obey all safety messages that follow this symbol to avoid possible injury or death.
	Indicates a hazardous situation which, if not avoided, will result in death or serious injury.
	Indicates a hazardous situation which, if not avoided, could result in death or serious injury.
	Indicates a hazardous situation which, if not avoided, could result in minor or moderate injury.
 	Addresses practices not related to personal injury.

IMPORTANT SAFETY INFORMATION

- Study, understand, and follow all instructions before operating this device.
- Do not exceed rated capacity.
- Use only on a hard, level surface capable of supporting the load.
- Center load on lift platform.
- Lift only those areas of the vehicle specified by its manufacturer.
- Immediately after lifting load, ensure lift mechanical load-holding is engaged.
- Before moving, lower the load to the lowest possible point.
- Secure load with appropriate restraint device.
- Failure to heed these markings may result in personal injury and/or property damage.
- Use of this product is limited to lifting, lowering, transporting, and storing, in the lowered position, loads consisting of a single vehicle whose lift points are compatible with the lift platform. Incompatibility is evident when the loaded vehicle wobbles, appears unstable, and/or does not securely engage the lift platform.
- Restraining an incompatible load will not make the load secure and may cause unexpected loss of load.
- Never work on, around, or under a load that is not secured and stable.
- Keep operator's and bystander's head, hands, and feet away from lift arms when raising and lowering.
- No alterations shall be made to this product.
- Only attachments, restraints, or adapters supplied by the manufacturer shall be used.
- Keep clear of load while lifting and lowering.
- Lower load slowly.
- Do not use for aircraft purposes.
- Inspect before every use; do not use if parts are loose or damaged.
- Do not move or dolly the vehicle while on the Lift.
- Stay alert. Watch what you are doing, and use common sense when operating a Lift. Do not use Lift while tired or under the influence of drugs, alcohol, or medication. A moment of inattention while operating lifts may result in serious personal injury.
- Never allow anyone to ride Lift when it is being raised, lowered, or while holding an ATV or motorcycle.
- Before use, read manufacturer's instruction manual for the ATV or motorcycle being lifted.

24. Store idle Lift out of reach of children and other untrained persons. Lifts are dangerous in the hands of untrained users.
25. Lift service must be performed only by qualified repair personnel. Service or maintenance performed by unqualified personnel could result in a risk of injury.
26. When servicing the Lift, use only identical replacement parts - refer to attached, product-specific parts lists and diagrams. Follow instructions in the "Maintenance and Servicing" section of this manual. Use of unauthorized parts or failure to follow maintenance instructions may create a risk of injury.
27. Maintain labels and nameplates on the Lift. These carry important information. If unreadable or missing, contact Harbor Freight Tools for a replacement.
28. The warnings, precautions, and instructions discussed in this manual cannot cover all possible conditions and situations that may occur. The operator must understand that common sense and caution are factors, which cannot be built into this product, but must be supplied by the operator.



SAVE THESE INSTRUCTIONS.

Specifications

Minimum Height	5"
Maximum Height	16-3/4"
Weight Capacity	1500 LB.
Overall Dimensions (without handle)	33-5/8" L x 16-1/2" W x 13-3/8" H

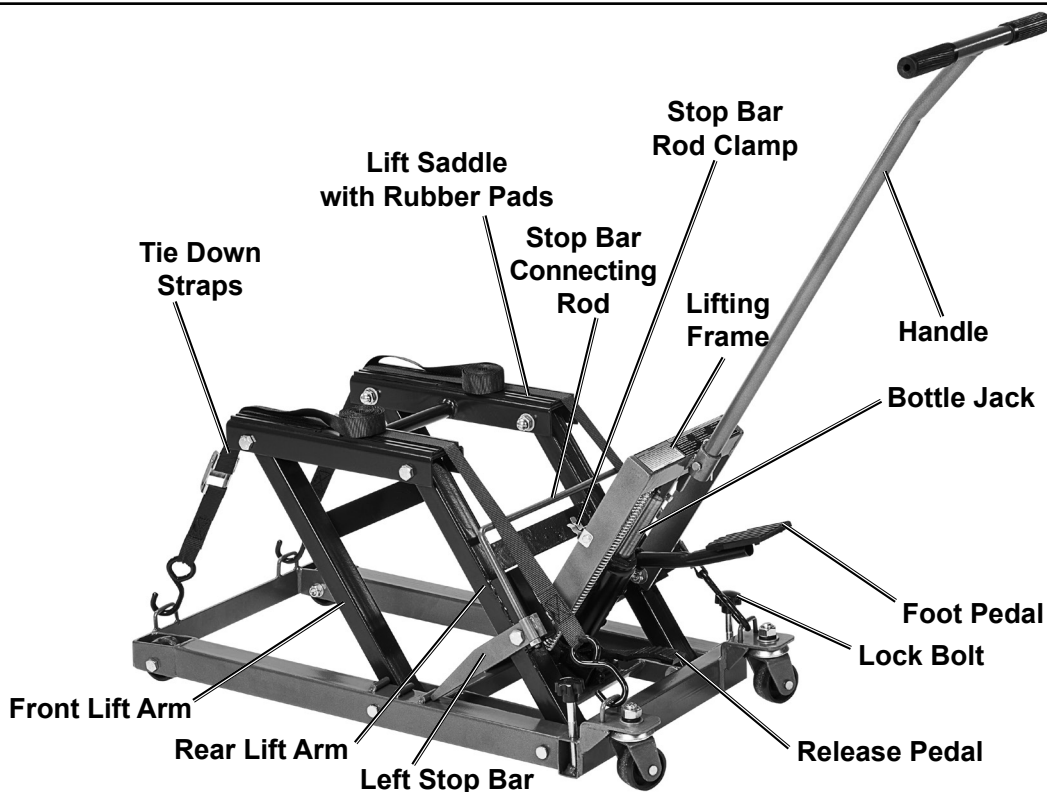
Setup – Before Use



Read the **ENTIRE IMPORTANT SAFETY INFORMATION** section at the beginning of this manual including all text under subheadings therein before set up or use of this product.

Note: For additional information regarding the parts listed in the following pages, refer to *Parts Lists and Assembly Diagrams* on page 12.

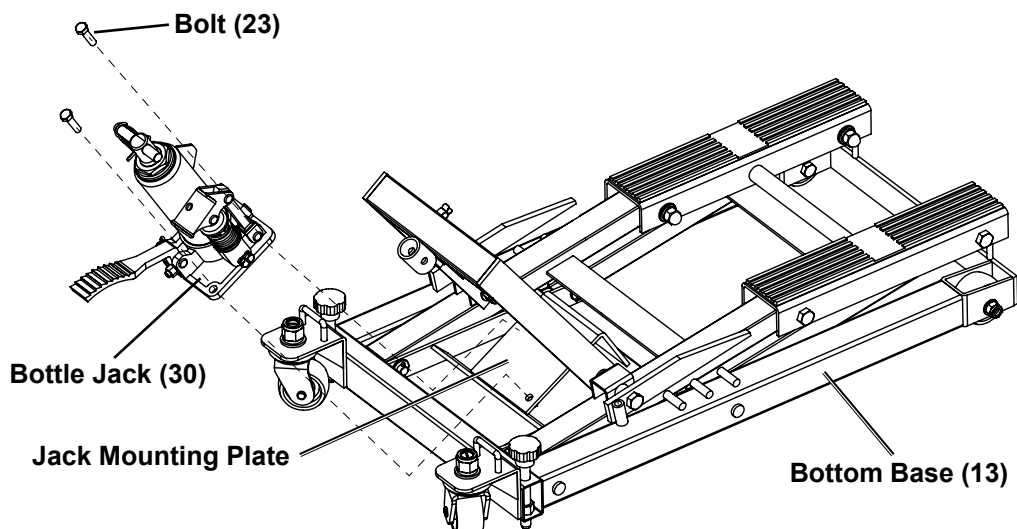
Components



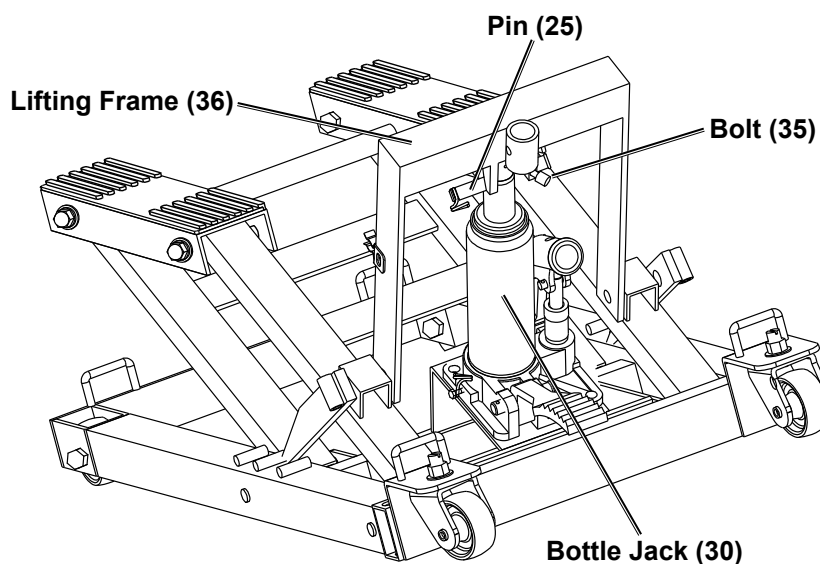
Lift Set Up

Mounting the Bottle Jack

1. Secure the Jack Assembly (30) to the Jack Mounting Plate portion of the Bottom Base (13) with two Bolts (23).

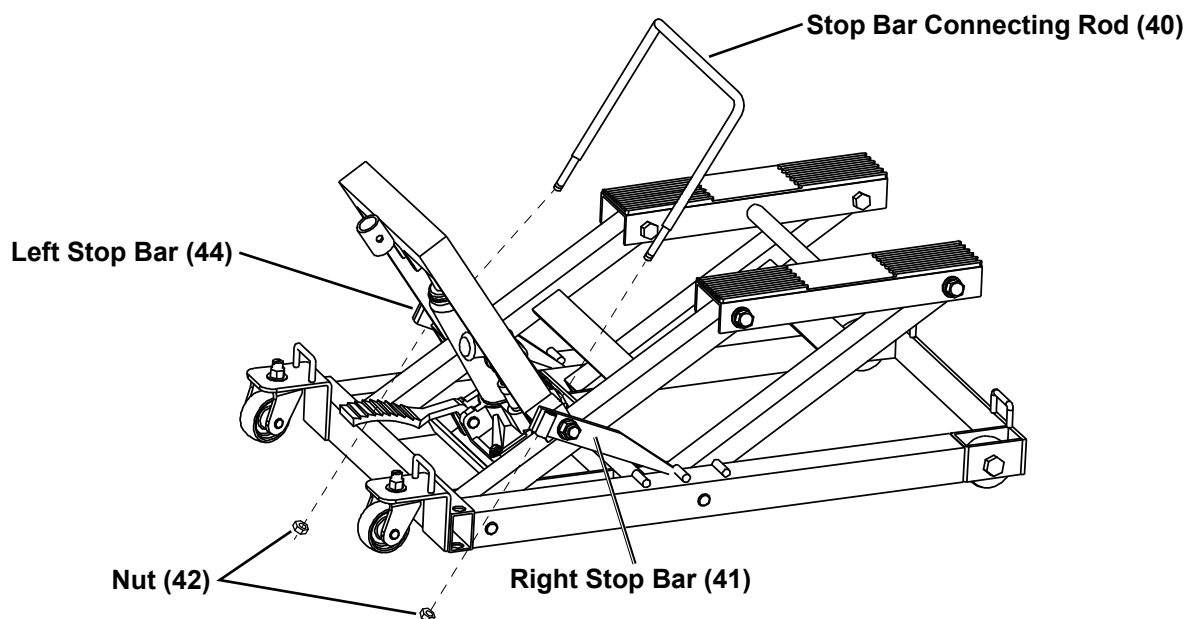


2. Lift the Lifting Frame (36) onto the Jack's ram and place the Pin (25), on the upper end of the Jack's arm, into the bracket on the Lifting Frame, securing it with the Bolt (35).



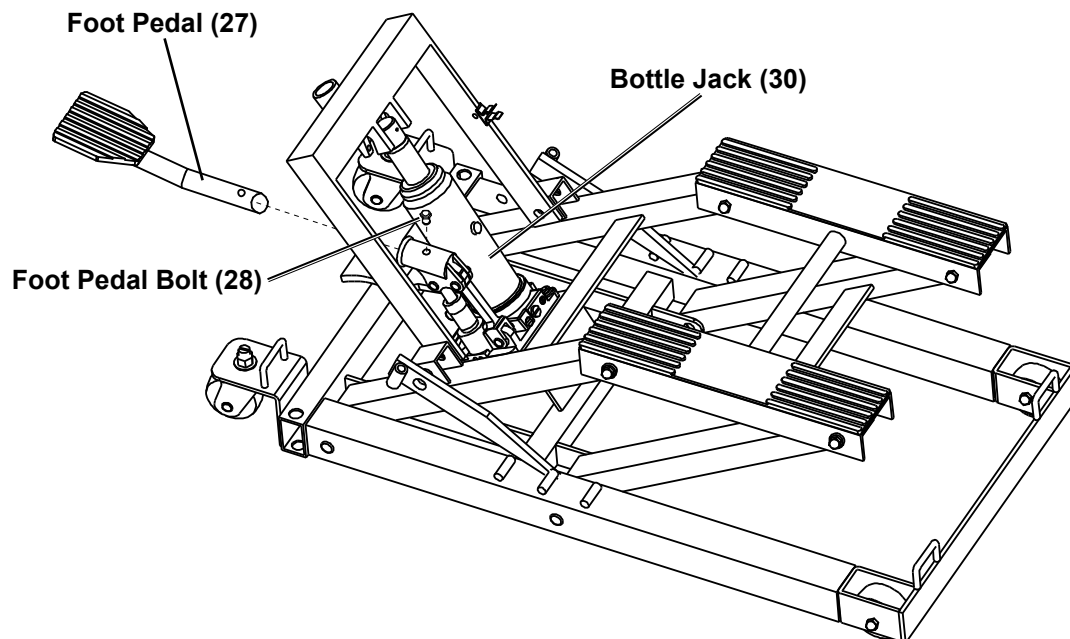
Installing the Stop Bar Connecting Rod

3. Insert the two ends of the Stop Bar Connecting Rod (40) into the sleeves on the Right and Left Stop Bars (41, 44).
4. Secure the Stop Bar Connecting Rod in place with two Nuts (42).



Installing the Foot Pedal

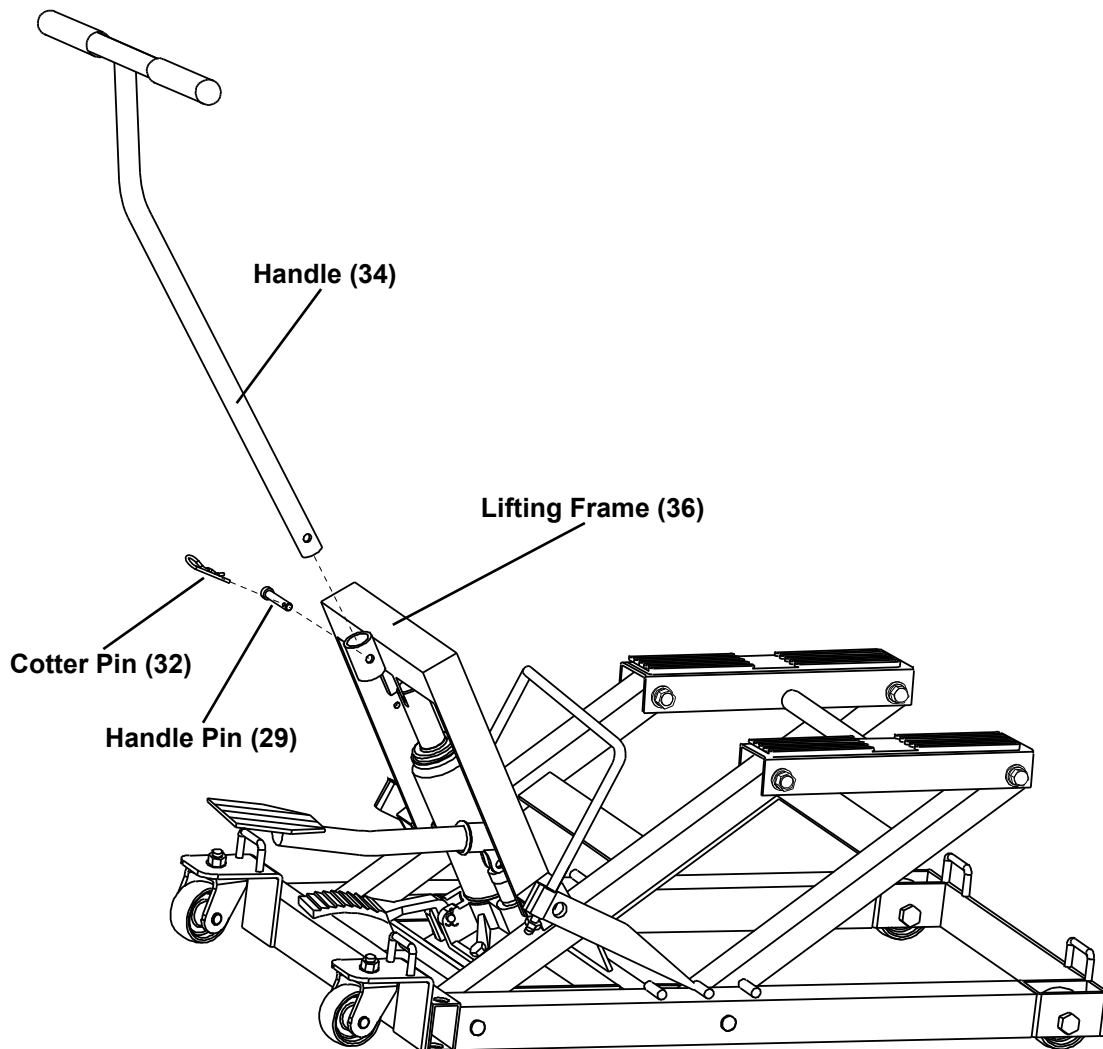
5. Insert the Foot Pedal (27) into its holder on the Bottle Jack (30).
6. Secure Foot Pedal in place using the Foot Pedal Bolt (28).



Setup – Before Use (continued)

Installing the Handle

1. Insert the end of the Handle (34) into the handle socket on the top of the Lifting Frame (36).
2. Secure the Handle in place with the Handle Pin (29) and Cotter Pin (32).



Bleeding

IMPORTANT! Before first use, check for proper hydraulic fluid level in the Bottle Jack (30). Then thoroughly test the Lift for proper operation prior to its actual use. If the Lift appears *not* to be working properly, it may be necessary to *bleed* its hydraulic system of excess air.

1. Remove the Fluid Fill Plug (39a) on the side of the Bottle Jack (30).
2. Use one foot to step on and hold the Release Pedal (13a) down.
3. While holding the Release Pedal down, quickly pump the Foot Pedal (27) up and down several times to purge air from the system.
4. Check the fluid fill hole and, if necessary, top off the jack's Fluid Reservoir (11a) with high grade hydraulic fluid (sold separately).
5. Replace the Fluid Fill Plug.
6. Test the Lift several times for proper operation before attempting to lift a load. **If, after purging, the Lift still does *not* appear to be working properly, do not use the Lift until it has been repaired by a qualified service technician.**

Adding Hydraulic Fluid

1. Remove the Fluid Fill Plug (39a) on the side of the Bottle Jack (30).
2. Add high grade hydraulic fluid (sold separately) into the fluid fill hole slowly until the fluid just begins to run out of the hole.
3. Replace the Fluid Fill Plug.

PITTSBURGH

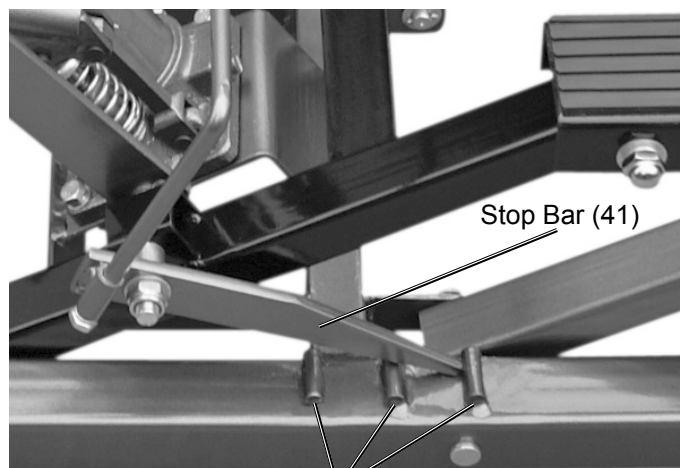
Operating Instructions

TO PREVENT SERIOUS INJURY: Do not work on the Lift, or leave it unattended if the Stop Bars (41, 44) are not in the locked position, or the Lock Bolts (16) are not engaged (lifting the Rear Wheels [17] off of the ground). Keep clear of Lift Arms (8, 43) during operation.

Lifting

1. Lift the Stop Bar Connecting Rod (40) and secure it to the Stop Bar Rod Clamp (37).
2. Use the Handle (34) to roll the Lift and position it next to the load. Lower the Lift by depressing the Release Pedal (13a). (See ATV or motorcycle owner's manual for recommended lifting points.)
3. Once positioned under the load, turn the Lock Bolts (16) until they contact the ground and lift the Rear Wheels (17) slightly off of the ground to keep the Lift from rolling.
4. Use Tie-Down Strap(s) (39) to secure the load. Repeatedly depress the Foot Pedal (27) slowly to raise the Lift. When the Lift makes contact with the load, make sure the load sits evenly on the Lift Saddle (2) before raising the load. If the load is not evenly distributed on the two Rubber Pads (3) or not secured in place with tie-down straps, it may fall from the Lift, resulting in personal injury and property damage.
5. Continue to raise the Lift to the desired height. Disengage the Stop Bar Connecting Rod from the clamp. Lock the Lift at one of the three locking positions on the Bottom Base (13) with the Stop Bars (41, 44) and lower Lift slightly to securely engage the Stop Bars. Not engaging the Stop Bars may result in serious injury or death, and damage the Lift.

Note: Stop Bars fit behind the welded stops on both sides of the Bottom Base.



Welded stops on Bottom Base (13)

Lowering

1. Carefully remove all tools, parts, etc. from under the Lift.
2. Depress the Foot Pedal (27) slowly to raise the Lift enough to disengage the Stop Bars (41, 44). Lift up the Stop Bar Connecting Rod (40) and secure it to the Stop Bar Rod Clamp (37).
3. Press the Release Pedal (13a) slowly and gently lower the load. Never allow the load to come down quickly or suddenly.
4. Once the load is on the ground, remove the tie-down straps. When the Lift is clear of the load, turn the Lock Bolts (16) until they are clear of the ground, allowing the Rear Wheels (17) to firmly contact the ground. Roll the Lift out from under the load.
5. Clean external surfaces of the Lift with a clean, dry cloth. Store Lift in dry, indoor area out of reach of children.

Maintenance and Servicing



Procedures not specifically explained in this manual must be performed only by a qualified technician.

⚠ WARNING

TO PREVENT SERIOUS INJURY FROM TOOL FAILURE: Do not use damaged equipment. If abnormal noise or vibration occurs, have the problem corrected before further use.

Cleaning, Maintenance, and Lubrication

1. **BEFORE EACH USE**, inspect the general condition of the Lift. Check for:
 - broken, cracked, or bent parts
 - loose or missing parts
 - any other condition that may affect its safe operation.

If a problem occurs, have the problem corrected before further use.
Do not use damaged equipment.
2. Before each use, thoroughly test the Lift for proper operation prior to its actual use. If the Lift appears *not* to be working properly, follow *Bleeding* instructions on page 7.
3. **Change the hydraulic fluid at least once every three years:**
 - a. With the Lift fully lowered, remove the Fluid Fill Plug (39a) on the side of the Bottle Jack (30).
 - b. With assistance, place the Lift on its side to allow the old hydraulic fluid to drain out of the jack's Fluid Reservoir (11a) completely, and dispose of the old hydraulic fluid in accordance with local regulations.
 - c. With the Lift upright, completely fill the jack's Fluid Reservoir with a high quality hydraulic fluid (sold separately) until the fluid just begins to run out of the fluid fill hole.
 - d. Reinstall the Fluid Fill Plug.
4. Wipe dry with a clean cloth. Store the Lift in a safe, dry location out of reach of children and other non-authorized people.

PITTSBURGH[®]

Troubleshooting

⚠️ WARNING

TO PREVENT SERIOUS INJURY: Use caution when troubleshooting a malfunctioning lift.

Stay well clear of the supported load. Completely resolve all problems before use.

If the solutions presented in the Troubleshooting guide do not solve the problem, have a qualified technician inspect and repair the Lift before use. After the Lift is repaired: Test it carefully without a load by raising it and lowering it fully, checking for proper operation, **BEFORE RETURNING THE LIFT TO OPERATION.**

DO NOT USE A DAMAGED OR MALFUNCTIONING LIFT!

POSSIBLE SYMPTOMS						PROBABLE SOLUTION (Make certain that the lift is not supporting a load while attempting a solution.)
Unit will not lift at its weight capacity	Saddle lowers under load	Pump stroke feels spongy	Saddle will not lift all the way	Handle moves up when jack is under load	Fluid leaking from filler plug	
X	X					Check that Release Pedal is not stuck and raises completely.
X	X			X		Valves may be blocked and may not close fully. To flush the valves, with assistance: 1. Lower the Lifting Frame and release the Release Pedal. 2. Manually lift the Lifting Frame several inches. 3. Press the Release Pedal and force the Lifting Frame down quickly.
X		X	X			Jack may be low on fluid. Check the fluid level and refill if needed.
						Jack may require bleeding – see page 7.
					X	Unit may have too much hydraulic fluid inside. Check fluid level and adjust if needed.

SAFETY

SETUP

OPERATION

MAINTENANCE

PLEASE READ THE FOLLOWING CAREFULLY

THE MANUFACTURER AND/OR DISTRIBUTOR HAS PROVIDED THE PARTS LIST AND ASSEMBLY DIAGRAM IN THIS MANUAL AS A REFERENCE TOOL ONLY. NEITHER THE MANUFACTURER OR DISTRIBUTOR MAKES ANY REPRESENTATION OR WARRANTY OF ANY KIND TO THE BUYER THAT HE OR SHE IS QUALIFIED TO MAKE ANY REPAIRS TO THE PRODUCT, OR THAT HE OR SHE IS QUALIFIED TO REPLACE ANY PARTS OF THE PRODUCT. IN FACT, THE MANUFACTURER AND/OR DISTRIBUTOR EXPRESSLY STATES THAT ALL REPAIRS AND PARTS REPLACEMENTS SHOULD BE UNDERTAKEN BY CERTIFIED AND LICENSED TECHNICIANS, AND NOT BY THE BUYER. THE BUYER ASSUMES ALL RISK AND LIABILITY ARISING OUT OF HIS OR HER REPAIRS TO THE ORIGINAL PRODUCT OR REPLACEMENT PARTS THERETO, OR ARISING OUT OF HIS OR HER INSTALLATION OF REPLACEMENT PARTS THERETO.

SAFETY

SETUP

OPERATION

MAINTENANCE

Record Product's Serial Number Here: _____

Note: If product has no serial number, record month and year of purchase instead.

Note: Some parts are listed and shown for illustration purposes only, and are not available individually as replacement parts. Specify UPC 193175326775 when ordering parts.

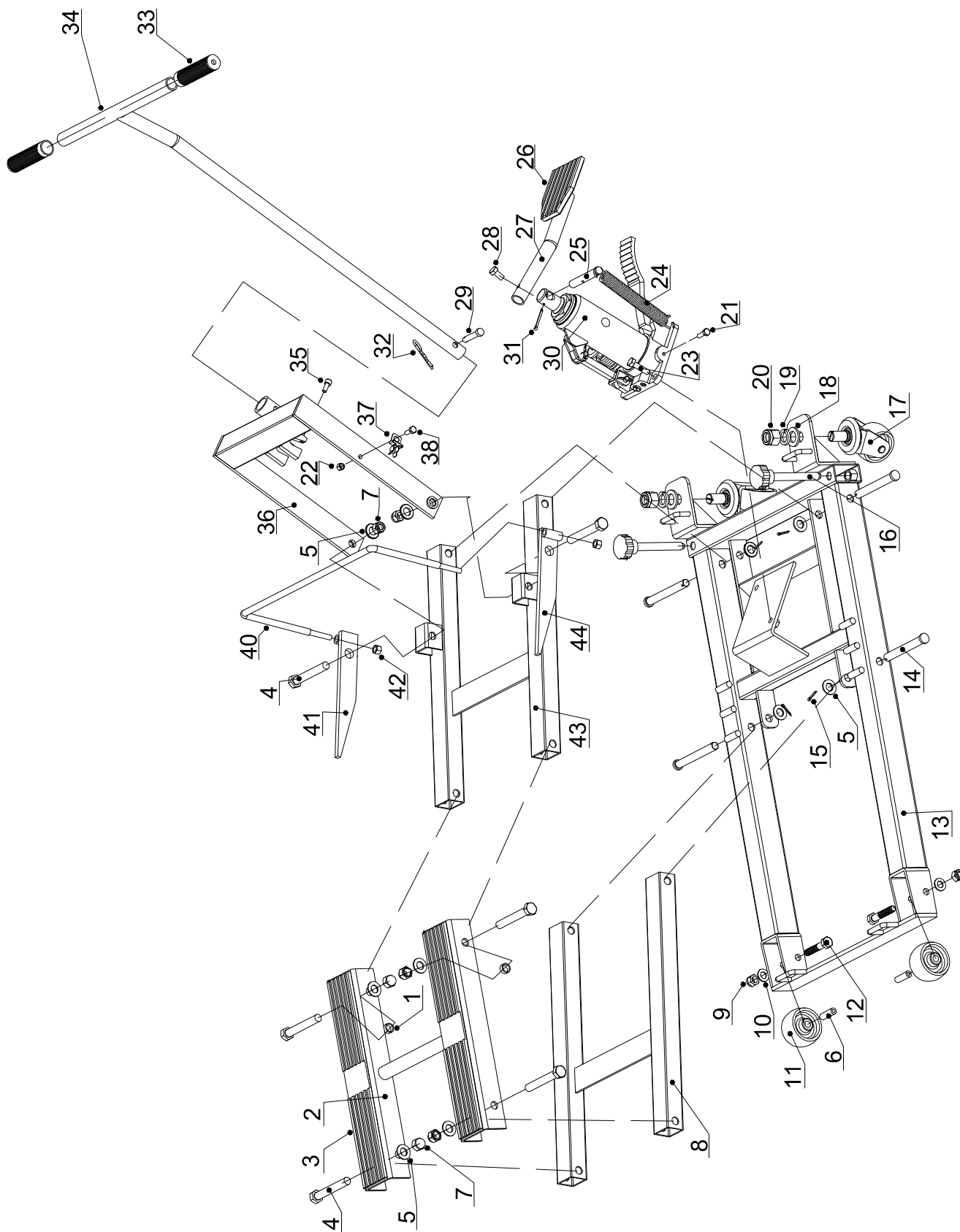
Main Parts List

Part	Description	Qty
1	Nylon Ring	2
2	Lift Saddle	1
3	Rubber Pad	2
4	Bolt M12 x 90	6
5	Washer Ø12	10
6	Steel Sleeve	2
7	Nut M12	6
8	Front Lift Arm	1
9	Nut M8	2
10	Washer Ø8	2
11	Front Wheel	2
12	Bolt M8 x 60	2
13	Bottom Base	1
14	Pin	4
15	Cotter Pin	4
16	Lock Bolt Assembly	2
17	Rear Wheel	2
18	Washer Ø12	2
19	Spring Washer Ø12	2
20	Nut M12	2
21	Bolt M6 x 25	1
22	Nut M6	1

Part	Description	Qty
23	Bolt M8x16	2
24	Spring	1
25	Pin	1
26	Rubber Pad	1
27	Foot Pedal	1
28	Foot Pedal Bolt M5x10	1
29	Handle Pin	1
30	Bottle Jack	1
31	Cotter Pin	1
32	Cotter Pin	1
33	Handle Sleeve	2
34	Handle	1
35	Bolt M5 x 16	1
36	Lifting Frame	1
37	Stop Bar Rod Clamp	1
38	Bolt M6 x 16	1
39	Tie Down Strap	2
40	Stop Bar Connecting Rod	1
41	Right Stop Bar	1
42	Nut M8	2
43	Rear Lift Arm	1
44	Left Stop Bar	1

PITTSBURGH®

Main Assembly Diagram



SAFETY

SETUP

OPERATION

MAINTENANCE

Parts List A – Bottle Jack (30)

SAFETY

SETUP

OPERATION

MAINTENANCE

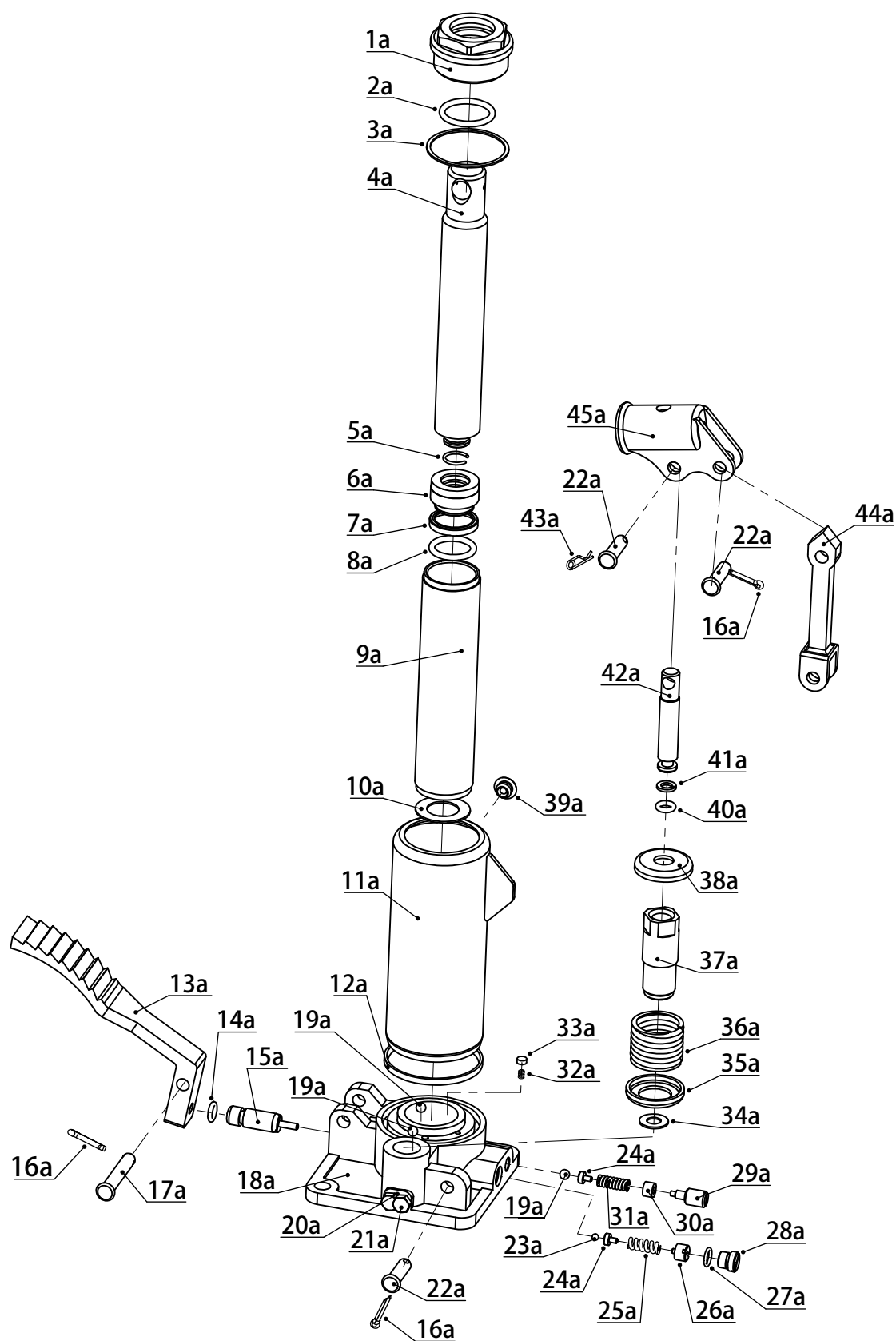
Part	Description	Qty
1a	Ram Cap	1
2a	Ram O-Ring	1
3a	Top Sealing Gasket	1
4a	Ram Assembly	1
5a	Retaining Ring	1
6a	Piston Head	1
7a	Ram Gasket	1
8a	O-Ring	1
9a	Cylinder	1
10a	Cylinder Sealing Gasket	1
11a	Fluid Reservoir	1
12a	Reservoir Sealing Gasket	1
13a	Release Pedal	1
14a	O-Ring	1
15a	Release Valve Rod	1
16a	Split Cotter Pin	2
17a	Pin	1
18a	Base	1
19a	Ball	3
20a	Ball	2
21a	Screw	2
22a	Pin	3
23a	Ball	1

Part	Description	Qty
24a	Spring Plunger	2
25a	Spring	1
26a	Screw	1
27a	O-Ring	1
28a	Screw	1
29a	Screw	1
30a	Sealing Ring	1
31a	Spring	1
32a	Spring	1
33a	Throttle Valve	1
34a	Washer	1
35a	Lower Spring Retainer	1
36a	Spring	1
37a	Pump Cylinder	1
38a	Upper Spring Retainer	1
39a	Fluid Fill Plug	1
40a	O-Ring	1
41a	Seal	1
42a	Piston Rod	1
43a	Split Cotter Pin	1
44a	Link	1
45a	Handle Socket	1

When ordering replacement parts from this list, the “a” suffix must be included in order to get the correct part.

PITTSBURGH

Assembly Diagram A – Bottle Jack (30)



SAFETY

SETUP

OPERATION

MAINTENANCE

Limited 90 Day Warranty

Harbor Freight Tools Co. makes every effort to assure that its products meet high quality and durability standards, and warrants to the original purchaser that this product is free from defects in materials and workmanship for the period of 90 days from the date of purchase. This warranty does not apply to damage due directly or indirectly, to misuse, abuse, negligence or accidents, repairs or alterations outside our facilities, criminal activity, improper installation, normal wear and tear, or to lack of maintenance. We shall in no event be liable for death, injuries to persons or property, or for incidental, contingent, special or consequential damages arising from the use of our product. Some states do not allow the exclusion or limitation of incidental or consequential damages, so the above limitation of exclusion may not apply to you. THIS WARRANTY IS EXPRESSLY IN LIEU OF ALL OTHER WARRANTIES, EXPRESS OR IMPLIED, INCLUDING THE WARRANTIES OF MERCHANTABILITY AND FITNESS.

To take advantage of this warranty, the product or part must be returned to us with transportation charges prepaid. Proof of purchase date and an explanation of the complaint must accompany the merchandise. If our inspection verifies the defect, we will either repair or replace the product at our election or we may elect to refund the purchase price if we cannot readily and quickly provide you with a replacement. We will return repaired products at our expense, but if we determine there is no defect, or that the defect resulted from causes not within the scope of our warranty, then you must bear the cost of returning the product.

This warranty gives you specific legal rights and you may also have other rights which vary from state to state.

PITTSBURGH[®]

26677 Agoura Road • Calabasas, CA 91302 • 1-888-866-5797