

# Owner's Manual & Safety Instructions

**Save This Manual** Keep this manual for the safety warnings and precautions, assembly, operating, inspection, maintenance and cleaning procedures. Write the product's serial number in the back of the manual near the assembly diagram (or month and year of purchase if product has no number). Keep this manual and the receipt in a safe and dry place for future reference.

23g

# **PITTSBURGH<sup>®</sup>**

## **1500 LB. CAPACITY ATV/MOTORCYCLE LIFT**



Item	60536
Weight Capacity	1,500 lb.
Maximum Height	16-1/2"
Minimum Height	5-1/4"

Visit our website at: <http://www.harborfreight.com>  
Email our technical support at: [productsupport@harborfreight.com](mailto:productsupport@harborfreight.com)

When unpacking, make sure that the product is intact and undamaged. If any parts are missing or broken, please call 1-888-866-5797 as soon as possible.

Copyright© 2023 by Harbor Freight Tools®. All rights reserved.  
No portion of this manual or any artwork contained herein may be reproduced in any shape or form without the express written consent of Harbor Freight Tools. Diagrams within this manual may not be drawn proportionally. Due to continuing improvements, actual product may differ slightly from the product described herein. Tools required for assembly and service may not be included.

### **⚠ WARNING**





Read this material before using this product.  
Failure to do so can result in serious injury.  
**SAVE THIS MANUAL.**

## Table of Contents

Safety .....	2	Maintenance .....	9
Specifications .....	3	Troubleshooting .....	10
Setup .....	4	Parts Lists and Assembly Diagrams .....	12
Operation .....	8	Warranty .....	16

# ***PITTSBURGH***<sup>®</sup>

### WARNING SYMBOLS AND DEFINITIONS

	This is the safety alert symbol. It is used to alert you to potential personal injury hazards. Obey all safety messages that follow this symbol to avoid possible injury or death.
 <b>DANGER</b>	Indicates a hazardous situation which, if not avoided, will result in death or serious injury.
 <b>WARNING</b>	Indicates a hazardous situation which, if not avoided, could result in death or serious injury.
 <b>CAUTION</b>	Indicates a hazardous situation which, if not avoided, could result in minor or moderate injury.
<b>NOTICE</b> <b>CAUTION</b>	Addresses practices not related to personal injury.

# IMPORTANT SAFETY INFORMATION

1. Study, understand, and follow all instructions before operating this device.
2. Do not exceed rated capacity.
3. Use only on a hard, level surface capable of supporting the load.
4. Center load on lift platform.
5. Lift only those areas of the vehicle specified by its manufacturer.
6. Immediately after lifting load, ensure lift mechanical load-holding means is engaged.
7. Before moving, lower the load to the lowest possible point.
8. Secure load with appropriate restraint device.
9. Failure to heed these markings may result in personal injury and/or property damage.
10. Use of this product is limited to lifting, lowering, transporting, and storing, in the lowered position, loads consisting of a single vehicle whose lift points are compatible with the lift platform. Incompatibility is evident when the loaded vehicle wobbles, appears unstable, and/or does not securely engage the lift platform.
11. Restraining an incompatible load will not make the load secure and may cause unexpected loss of load.
12. Never work on, around, or under a load that is not secured and stable.
13. Keep operator's and bystander's head, hands, and feet away from the lift arms when raising and lowering.
14. No alterations shall be made to this product.
15. Only attachments, restraints, or adapters supplied by the manufacturer shall be used.
16. Do not adjust safety valve.
17. Wear ANSI-approved safety goggles and heavy-duty work gloves during use.
18. Lower load slowly.
19. Do not use for aircraft purposes.
20. Inspect before every use; do not use if parts are loose or damaged.
21. Stay alert. Watch what you are doing, and use common sense when operating a Lift. Do not use Lift while tired or under the influence of drugs, alcohol, or medication. A moment of inattention while operating lifts may result in serious personal injury.
22. Never allow anyone to ride Lift when it is being raised, lowered, or while holding an ATV or motorcycle.
23. Before use, read manufacturer's instruction manual for the ATV or motorcycle being lifted.
24. Store idle Lift out of reach of children and other untrained persons. Lifts are dangerous in the hands of untrained users.
25. Lift service must be performed only by qualified repair personnel. Service or maintenance performed by unqualified personnel could result in a risk of injury.
26. When servicing the Lift, use only identical replacement parts - refer to attached, product-specific parts lists and diagrams. Follow instructions in the "Maintenance and Servicing" section of this manual. Use of unauthorized parts or failure to follow maintenance instructions may create a risk of injury.
27. Maintain labels and nameplates on the Lift. These carry important information. If unreadable or missing, contact Harbor Freight Tools for a replacement. The warnings, precautions, and instructions discussed in this manual cannot cover all possible conditions and situations that may occur. The operator must understand that common sense and caution are factors, which cannot be built into this product, but must be supplied by the operator.



**SAVE THESE INSTRUCTIONS.**

## Specifications

Maximum Capacity	1500 lb. (dead weight, evenly distributed)
Lift Range	5-1/4" to 16-1/2"
Dimensions	35" L x 16-1/2" W x 12-1/2" H

## Setup – Before Use



Read the **ENTIRE IMPORTANT SAFETY INFORMATION** section at the beginning of this manual including all text under subheadings therein before set up or use of this product.

**Note:** For additional information regarding the parts listed in the following pages, refer to *Parts Lists and Assembly Diagrams* on page 12.

## Components

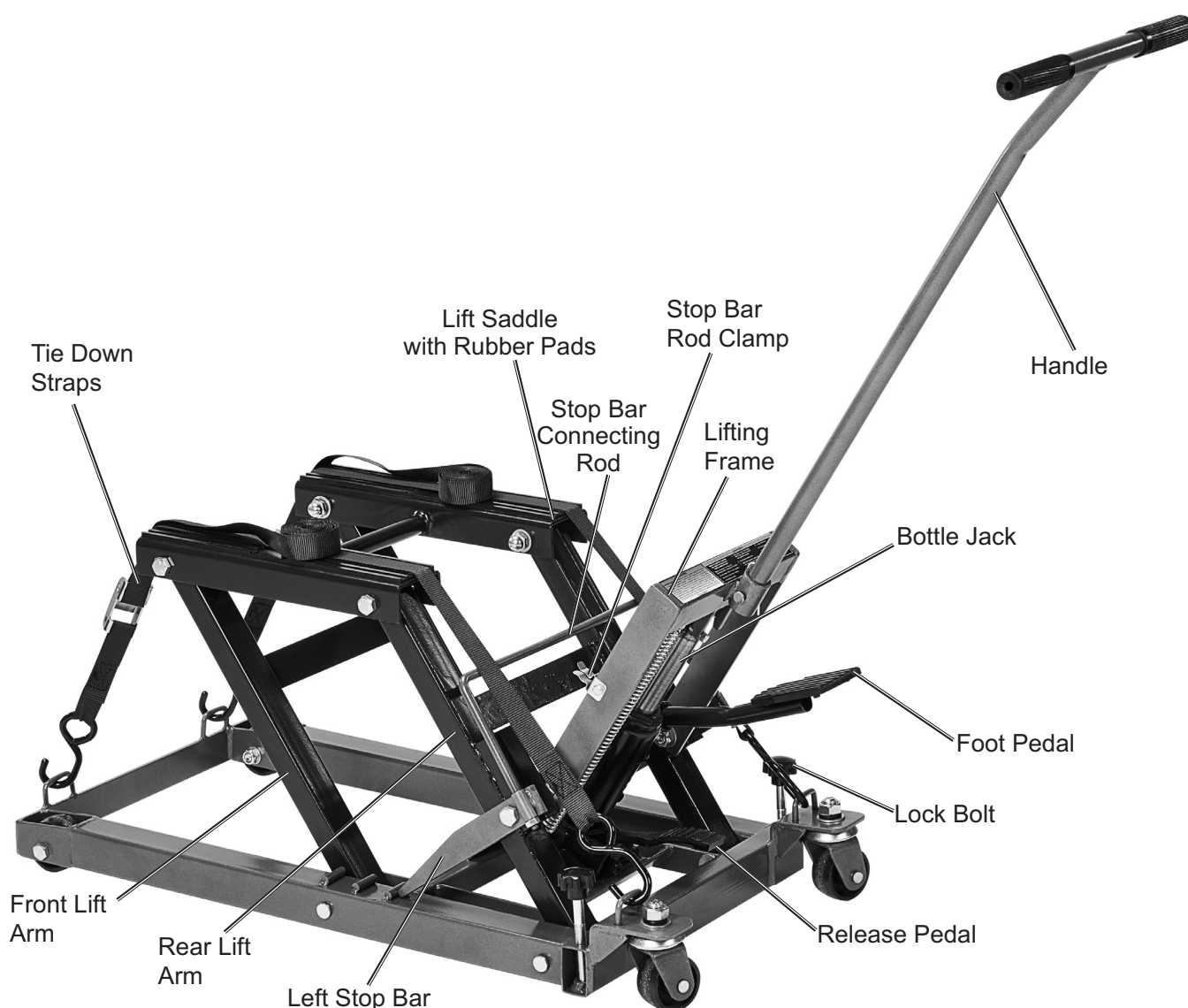


Figure A

# Lift Set Up

## Mounting the Bottle Jack

1. Secure the Jack Assembly (30) to the Jack Mounting Plate portion of the Bottom Base (13) with two Bolts (23). See Figure B.

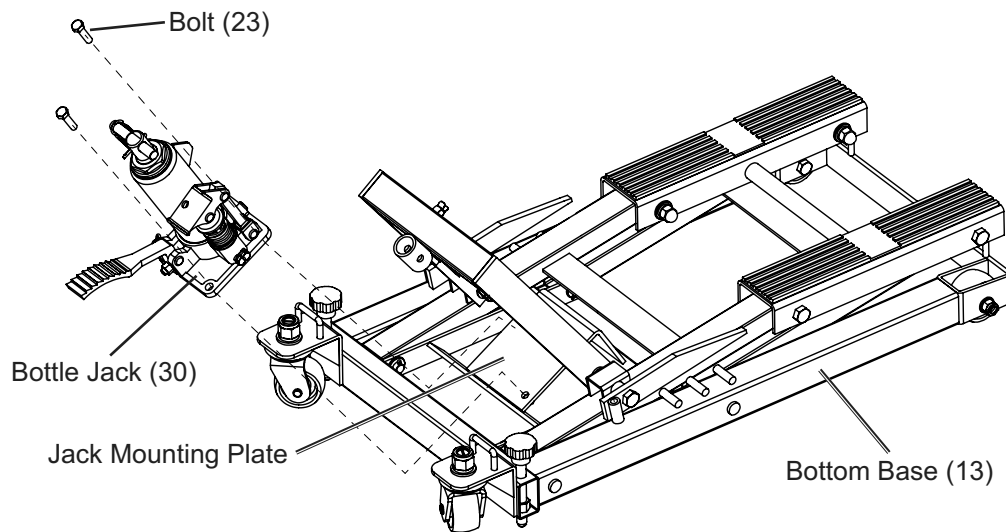


Figure B

2. Lift the Lifting Frame (36) onto the Jack's ram and place the Pin (25), on the upper end of the Jack's arm, into the bracket on the Lifting Frame, securing it with the Bolt (35). See Figure C.

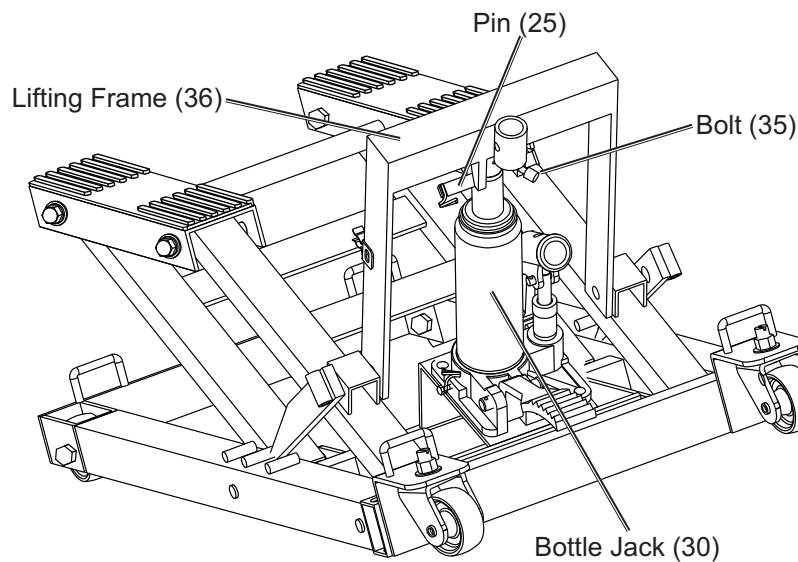


Figure C

## Installing the Stop Bar Connecting Rod

1. Insert the two ends of the Stop Bar Connecting Rod (40) into the sleeves on the Right and Left Stop Bars (41, 45).
2. Secure the Stop Bar Connecting Rod in place with two Nuts (43). See Figure D.

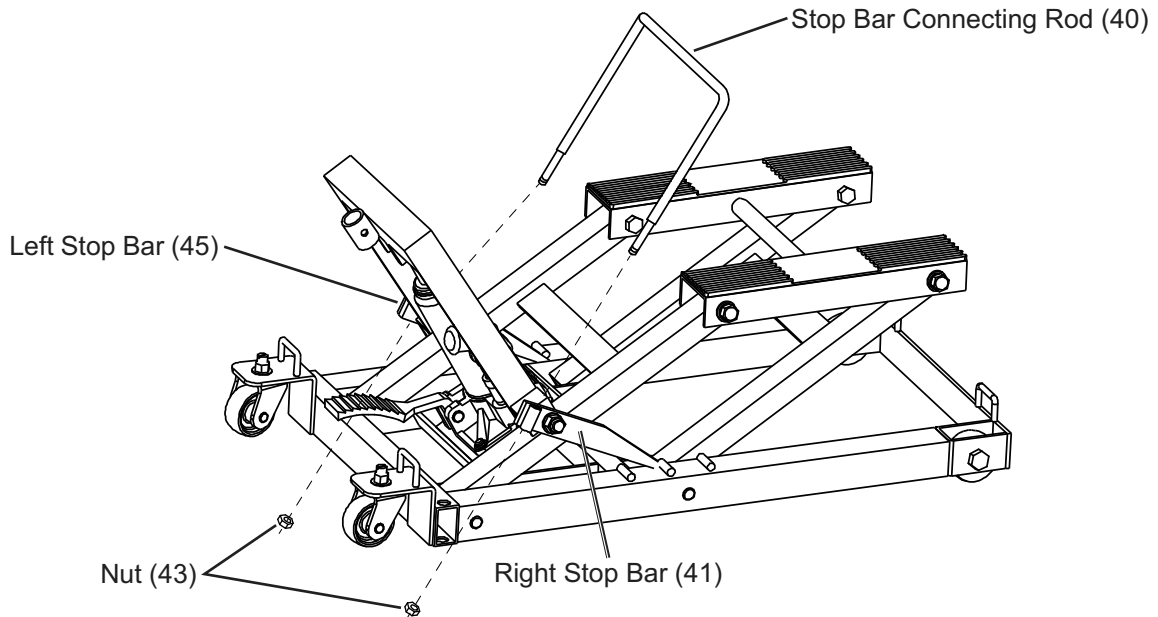


Figure D

## Installing the Foot Pedal

1. Insert the Foot Pedal (27) into its holder on the Bottle Jack (30).
2. Secure Foot Pedal in place using the Foot Pedal Bolt (28). See Figure E.

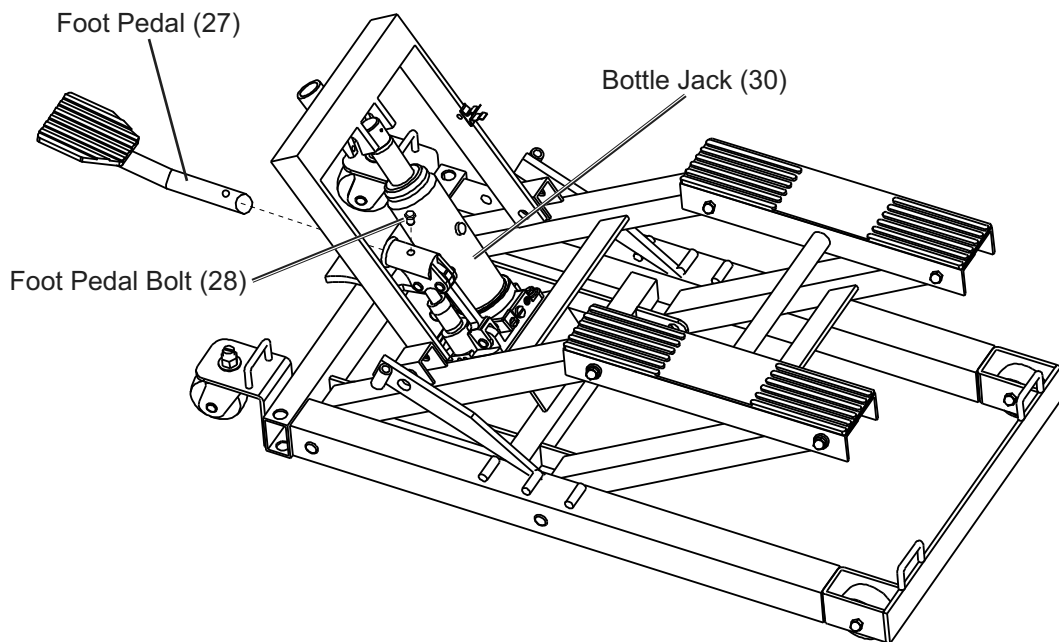


Figure E

## Installing the Handle

1. Insert the end of the Handle (34) into the handle socket on the top of the Lifting Frame (36).
2. Secure the Handle in place with the Handle Pin (29) and the Cotter Pin (32). See Figure F.

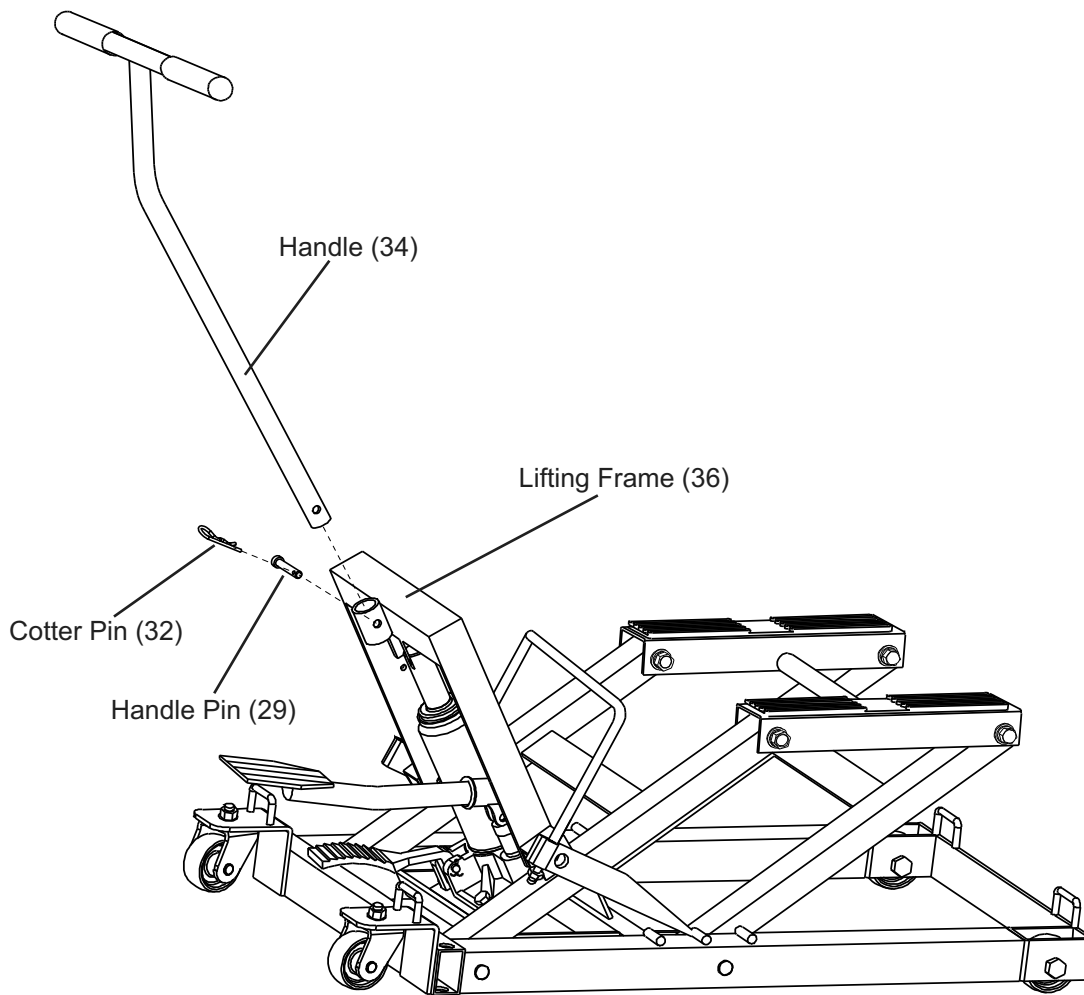


Figure F

## Bleeding

**IMPORTANT!** Before first use, check for proper hydraulic oil level in the Bottle Jack (30). Then thoroughly test the Lift for proper operation prior to its actual use. If the Lift appears *not* to be working properly, it may be necessary to *bleed* its hydraulic system of excess air.

1. Remove the Oil Filler Plug (41a) on the side of the Bottle Jack (30).
2. Use one foot to step on and hold the Release Pedal (13a) down.
3. While holding the Release Pedal down, quickly pump the Foot Pedal (27) up and down several times to purge air from the system.
4. Check the oil fill hole and, if necessary, top off the jack's Oil Reservoir (11a) with high grade hydraulic oil (sold separately).
5. Replace the Oil Filler Plug.
6. Test the Lift several times for proper operation before attempting to lift a load. **If, after purging, the Lift still does not appear to be working properly, do not use the Lift until it has been repaired by a qualified service technician.**

## Adding Oil

1. Remove the Oil Filler Plug (41a) on the side of the Bottle Jack (30).
2. Add high grade hydraulic oil (sold separately) into the oil fill hole slowly until the oil just begins to run out of the hole.
3. Replace the Oil Filler Plug.

# Operating Instructions

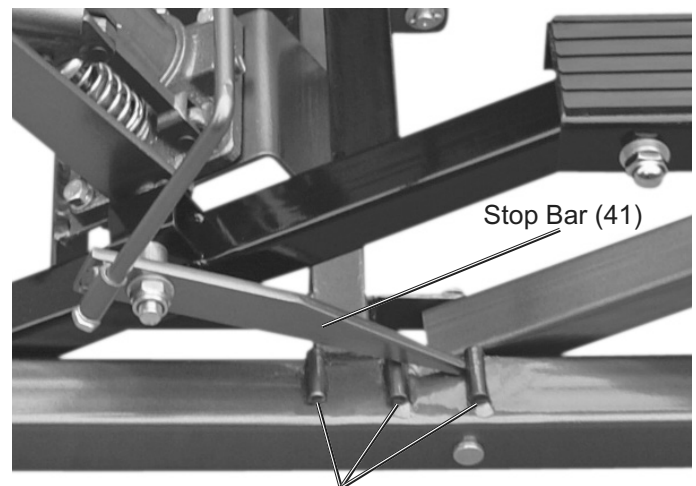
## ⚠ WARNING

**TO PREVENT SERIOUS INJURY:** Do not work on the Lift, or leave it unattended if the Stop Bars (41, 45) are not in the locked position, or the Lock Bolts (16) are not engaged (lifting the Rear Wheels (17) off of the ground). Keep clear of Lift Arms (8, 44) during operation.

## Lifting

1. Lift the Stop Bar Connecting Rod (40) and secure it to the Stop Bar Rod Clamp (37).
2. Use the Handle (34) to roll the Lift and position it next to the load. Lower the Lift by depressing the Release Pedal (13a). (See ATV or motorcycle owner's manual for recommended lifting points.)
3. Once positioned under the load, turn the Lock Bolts (16) until they contact the ground and lift the Rear Wheels (17) slightly off of the ground to keep the Lift from rolling.
4. Use tie-down straps (47) to secure the load. Repeatedly depress the Foot Pedal (27) slowly to raise the Lift. When the Lift makes contact with the load, make sure the load sits evenly on the Lift Saddle (2) before raising the load. If the load is not evenly distributed on the two Rubber Pads (3) or not secured in place with tie-down straps, it may fall from the Lift, resulting in personal injury and property damage.
5. Continue to raise the Lift to the desired height. Disengage the Stop Bar Connecting Rod from the clamp. Lock the Lift at one of the three locking positions on the Bottom Base (13) with the Stop Bars (41, 45) and lower Lift slightly to securely engage the Stop Bars. Not engaging the Stop Bars may result in serious injury or death, and damage the Lift.

**Note:** Stop Bars fit behind the welded stops on both sides of the Bottom Base. See Figure G showing Stop Bars in the locked position.



Welded stops on Bottom Base (13)

**Figure G**

## Lowering

1. Carefully remove all tools, parts, etc. from under the Lift.
2. Depress the Foot Pedal (27) slowly to raise the Lift enough to disengage the Stop Bars (41, 45). Lift up the Stop Bar Connecting Rod (40) and secure it to the Stop Bar Rod Clamp (37).
3. Press the Release Pedal (13a) slowly and gently lower the load. Never allow the load to come down quickly or suddenly.
4. Once the load is on the ground, remove the tie-down straps. When the Lift is clear of the load, turn the Lock Bolts (16) until they are clear of the ground, allowing the Rear Wheels (17) to firmly contact the ground. Roll the Lift out from under the load.
5. Clean external surfaces of the Lift with a clean, dry cloth. Store Lift in dry, indoor area out of reach of children.



# Maintenance and Servicing



Procedures not specifically explained in this manual must be performed only by a qualified technician.

## **!WARNING**

**TO PREVENT SERIOUS INJURY FROM TOOL FAILURE:** Do not use damaged equipment. If abnormal noise or vibration occurs, have the problem corrected before further use.

## Cleaning, Maintenance, and Lubrication

1. Before each use, inspect the general condition of the Lift. Check for broken, cracked, or bent parts, loose or missing parts, and any condition that may affect the proper operation of the product. If a problem occurs, have the problem corrected before further use.  
**Do not use damaged equipment.**
2. Before each use, thoroughly test the Lift for proper operation prior to its actual use. If the Lift appears *not* to be working properly, follow *Bleeding* instructions on page 7.
3. Change the hydraulic oil at least once every three years:
  - a. With the Lift fully lowered, remove the Oil Filler Plug (41a) on the side of the Bottle Jack (30).
  - b. With assistance, place the Lift on its side to allow the old hydraulic oil to drain out of the jack's Oil Reservoir (11a) completely, and dispose of the old hydraulic oil in accordance with local regulations.
  - c. With the Lift upright, completely fill the jack's Oil Reservoir with a high quality hydraulic oil (sold separately) until the oil just begins to run out of the oil fill hole.
  - d. Reinstall the Oil Filler Plug.
4. Wipe dry with a clean cloth. Then, store the Lift in a safe, dry location out of reach of children and other non-authorized people.

# Troubleshooting

## ⚠ WARNING

**TO PREVENT SERIOUS INJURY:** Use caution when troubleshooting a malfunctioning lift.

**Stay well clear of the supported load. Completely resolve all problems before use.**

If the solutions presented in the Troubleshooting guide do not solve the problem, have a qualified technician inspect and repair the Lift before use. **After the Lift is repaired: Test it carefully without a load by raising it and lowering it fully, checking for proper operation, BEFORE RETURNING THE LIFT TO OPERATION.**

**DO NOT USE A DAMAGED OR MALFUNCTIONING LIFT!**

POSSIBLE SYMPTOMS						PROBABLE SOLUTION (Make certain that the lift is not supporting a load while attempting a solution.)
Unit will not lift at its weight capacity	Saddle lowers under load	Pump stroke feels spongy	Saddle will not lift all the way	Handle moves up when jack is under load	Oil leaking from filler plug	
X	X					Check that Release Pedal is not stuck and raises completely.
X	X			X		Valves may be blocked and may not close fully. To flush the valves, with assistance: 1. Lower the Lifting Frame and release the Release Pedal. 2. Manually lift the Lifting Frame several inches. 3. Press the Release Pedal and force the Lifting Frame down quickly.
X		X	X			Jack may be low on oil. Check the oil level and refill if needed. Jack may require bleeding - see page 7.
					X	Unit may have too much hydraulic oil inside. Check fluid level and adjust if needed.

## PLEASE READ THE FOLLOWING CAREFULLY

---

THE MANUFACTURER AND/OR DISTRIBUTOR HAS PROVIDED THE PARTS LIST AND ASSEMBLY DIAGRAM IN THIS MANUAL AS A REFERENCE TOOL ONLY. NEITHER THE MANUFACTURER OR DISTRIBUTOR MAKES ANY REPRESENTATION OR WARRANTY OF ANY KIND TO THE BUYER THAT HE OR SHE IS QUALIFIED TO MAKE ANY REPAIRS TO THE PRODUCT, OR THAT HE OR SHE IS QUALIFIED TO REPLACE ANY PARTS OF THE PRODUCT. IN FACT, THE MANUFACTURER AND/OR DISTRIBUTOR EXPRESSLY STATES THAT ALL REPAIRS AND PARTS REPLACEMENTS SHOULD BE UNDERTAKEN BY CERTIFIED AND LICENSED TECHNICIANS, AND NOT BY THE BUYER. THE BUYER ASSUMES ALL RISK AND LIABILITY ARISING OUT OF HIS OR HER REPAIRS TO THE ORIGINAL PRODUCT OR REPLACEMENT PARTS THERETO, OR ARISING OUT OF HIS OR HER INSTALLATION OF REPLACEMENT PARTS THERETO.

**Record Product's Serial Number Here:** \_\_\_\_\_

**Note:** If product has no serial number, record month and year of purchase instead.

**Note:** Some parts are listed and shown for illustration purposes only, and are not available individually as replacement parts. Specify UPC 193175472236 when ordering parts.

## Parts Lists and Assembly Diagrams

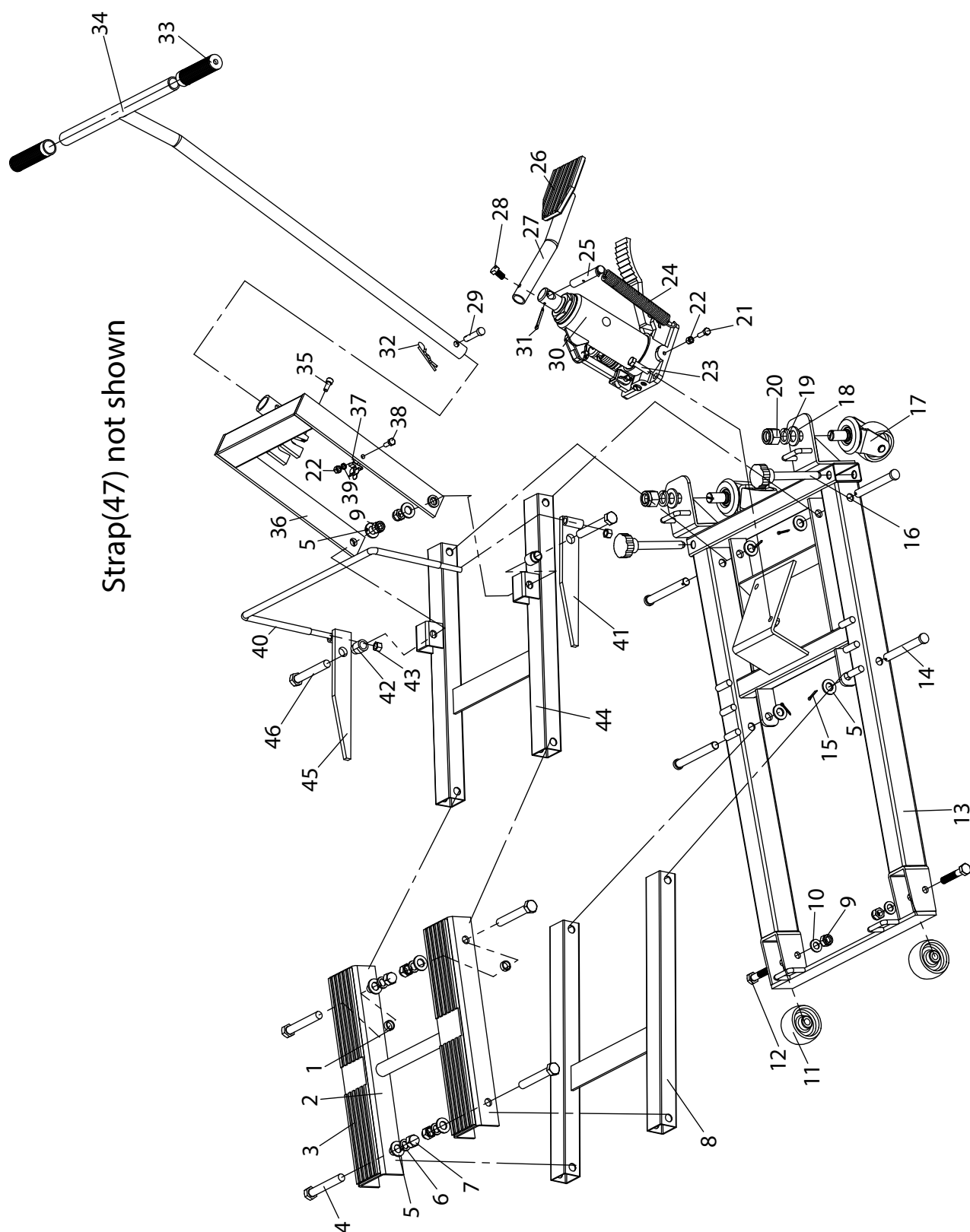
### Main Parts List

Part	Description	Qty
1	Nylon Ring	2
2	Lift Saddle	1
3	Rubber Pad	2
4	Bolt	4
5	Washer	10
6	Washer	4
7	Nut	4
8	Front Lift Arm	1
9	Nut	4
10	Washer	2
11	Front Wheel	2
12	Bolt	2
13	Bottom Base	1
14	Pin	4
15	Cotter Pin	4
16	Lock Bolt Assembly	2
17	Rear Wheel	2
18	Washer	2
19	Washer	2
20	Nut	2
21	Bolt	1
22	Nut	2
23	Bolt M8x30	2
24	Spring	1

Part	Description	Qty
25	Pin	1
26	Rubber Pad	1
27	Foot Pedal	1
28	Foot Pedal Bolt M8x16	1
29	Handle Pin	1
30	Bottle Jack	1
31	Cotter Pin	1
32	Cotter Pin	1
33	Handle Sleeve	2
34	Handle	1
35	Bolt	1
36	Lifting Frame	1
37	Stop Bar Rod Clamp	1
38	Bolt	1
39	Washer	1
40	Stop Bar Connecting Rod	1
41	Right Stop Bar	1
42	Bushing	2
43	Nut M8	2
44	Rear Lift Arm	1
45	Left Stop Bar	1
46	Bolt	2
47	Tie-Down Strap	2

# ***PITTSBURGH***<sup>®</sup>

# Main Assembly Diagram



SAFETY

SETUP

OPERATION

MAINTENANCE

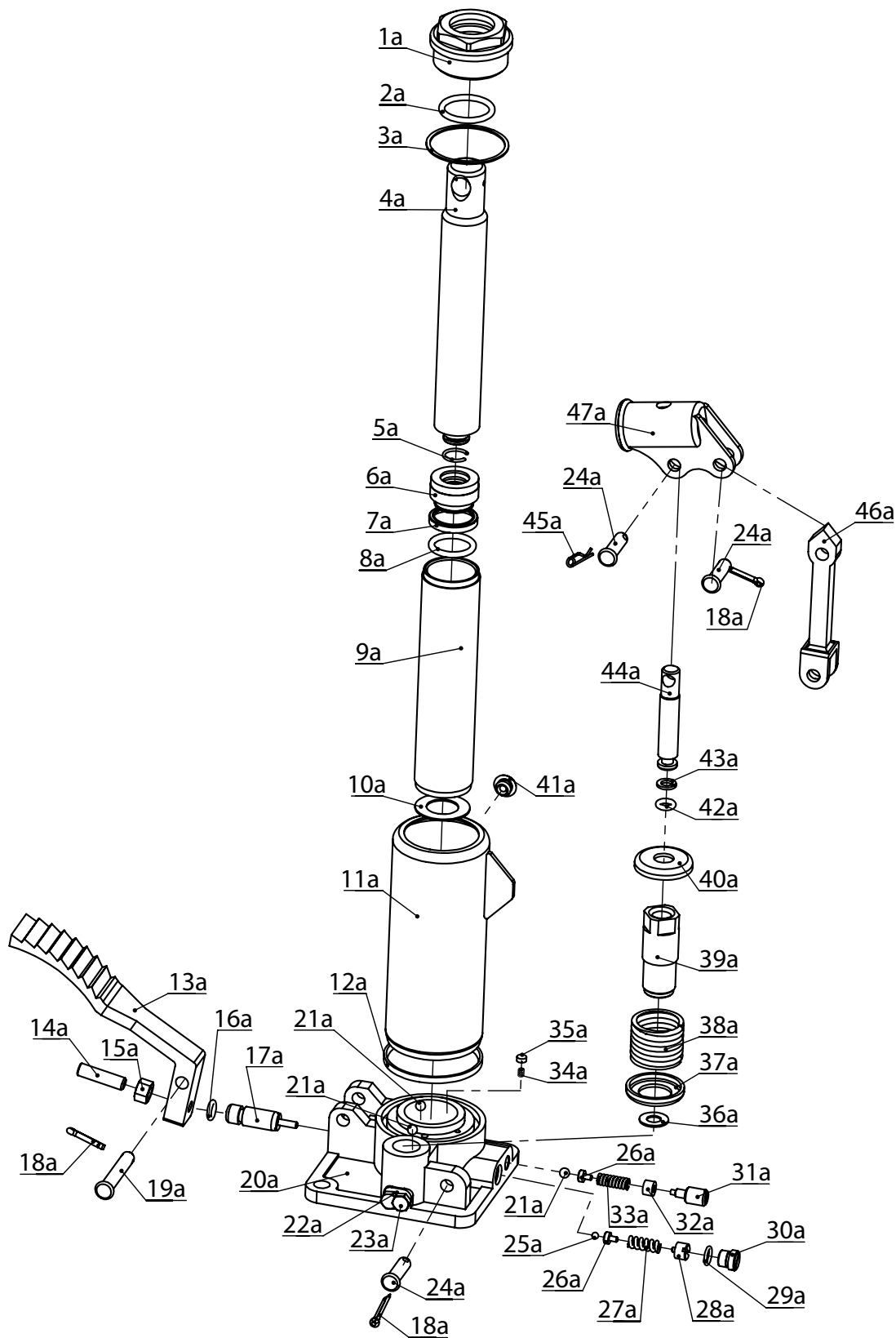
## Parts List A – Bottle Jack (30)

Part	Description	Qty
1a	Ram Cap	1
2a	Ram O-ring	1
3a	Top Sealing Gasket	1
4a	Ram Assembly	1
5a	Retaining Ring	1
6a	Piston Head	1
7a	Ram Gasket	1
8a	O-ring	1
9a	Cylinder	1
10a	Cylinder Sealing Gasket	1
11a	Oil Reservoir	1
12a	Reservoir Sealing Gasket	1
13a	Release Pedal	1
14a	Locking Screw	1
15a	Nut	1
16a	O-ring	1
17a	Release Valve Rod	1
18a	Split Cotter Pin	2
19a	Pin	1
20a	Base	1
21a	Ball	3
22a	Ball	2
23a	Screw	2
24a	Pin	3

Part	Description	Qty
25a	Ball	1
26a	Spring Plunger	2
27a	Spring	1
28a	Screw	1
29a	O-ring	1
30a	Screw	1
31a	Screw	1
32a	Sealing Ring	1
33a	Spring	1
34a	Spring	1
35a	Throttle Valve	1
36a	Washer	1
37a	Lower Spring Retainer	1
38a	Spring	1
39a	Pump Cylinder	1
40a	Upper Spring Retainer	1
41a	Oil Filler Plug	1
42a	O-ring	1
43a	Seal	1
44a	Piston Rod	1
45a	Split Cotter Pin	1
46a	Link	1
47a	Handle Socket	1

# ***PITTSBURGH***<sup>®</sup>

# Assembly Diagram A – Bottle Jack (30)



SAFETY

SETUP

OPERATION

MAINTENANCE

## Limited 90 Day Warranty

Harbor Freight Tools Co. makes every effort to assure that its products meet high quality and durability standards, and warrants to the original purchaser that this product is free from defects in materials and workmanship for the period of 90 days from the date of purchase. This warranty does not apply to damage due directly or indirectly, to misuse, abuse, negligence or accidents, repairs or alterations outside our facilities, criminal activity, improper installation, normal wear and tear, or to lack of maintenance. We shall in no event be liable for death, injuries to persons or property, or for incidental, contingent, special or consequential damages arising from the use of our product. Some states do not allow the exclusion or limitation of incidental or consequential damages, so the above limitation of exclusion may not apply to you. THIS WARRANTY IS EXPRESSLY IN LIEU OF ALL OTHER WARRANTIES, EXPRESS OR IMPLIED, INCLUDING THE WARRANTIES OF MERCHANTABILITY AND FITNESS.

To take advantage of this warranty, the product or part must be returned to us with transportation charges prepaid. Proof of purchase date and an explanation of the complaint must accompany the merchandise. If our inspection verifies the defect, we will either repair or replace the product at our election or we may elect to refund the purchase price if we cannot readily and quickly provide you with a replacement. We will return repaired products at our expense, but if we determine there is no defect, or that the defect resulted from causes not within the scope of our warranty, then you must bear the cost of returning the product.

This warranty gives you specific legal rights and you may also have other rights which vary from state to state.

# ***PITTSBURGH***<sup>®</sup>

26677 Agoura Road • Calabasas, CA 91302 • 1-888-866-5797