

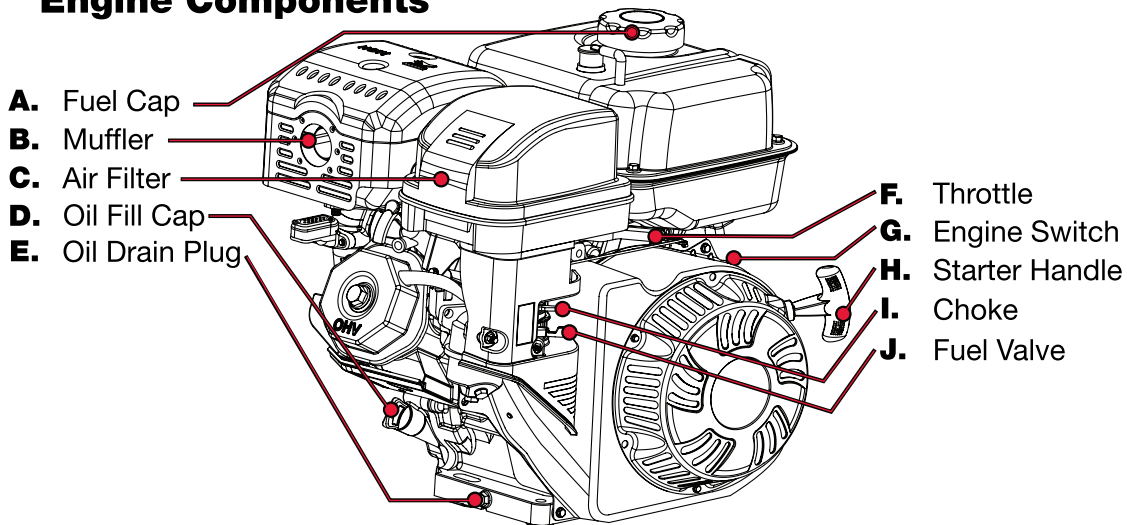
# PREDATOR<sup>®</sup>

## ENGINES

### QUICK START GUIDE

Horizontal Shaft Gas Engine    Item: 60340

#### Engine Components

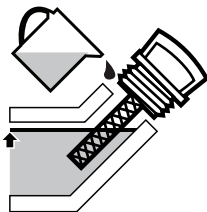


**READ AND UNDERSTAND USER MANUAL BEFORE USE.**

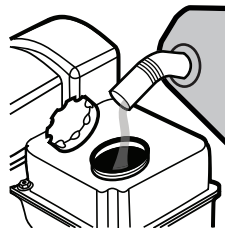


## Add Fluids

Check oil and fuel levels  
If needed, fill in as shown below



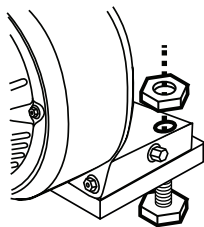
Add oil to engine  
crankcase



Add fuel to within  
1" of the rim of the tank

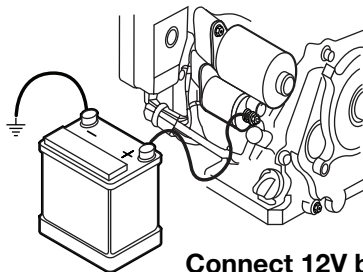
**Note:** Use regular Unleaded 87 Octane.  
Engine note designed for E85 Ethanol blend.

## Assembly



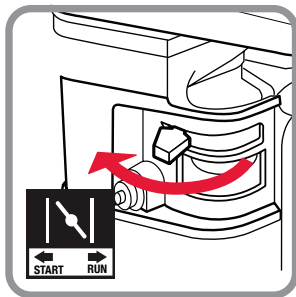
Mount the engine  
securely in place

## For Electric Start

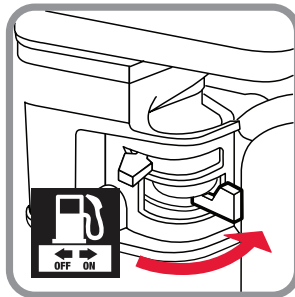


Connect 12V battery

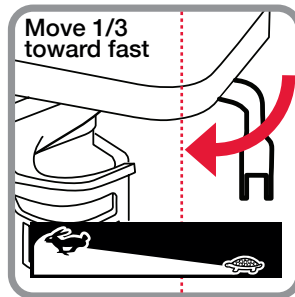
## Manual Starting Procedure



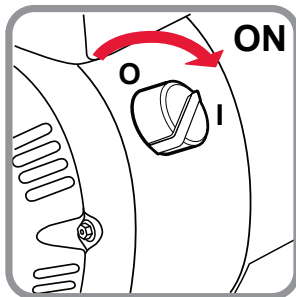
1. CLOSE CHOKE



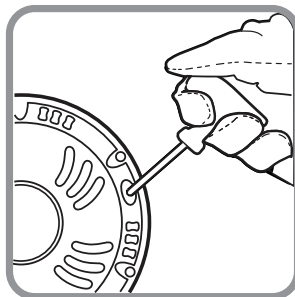
2. OPEN FUEL VALVE



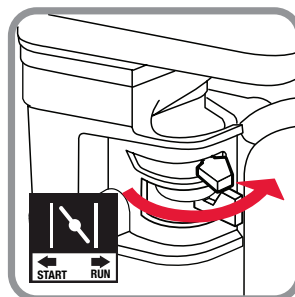
3. ADJUST THROTTLE



4. SWITCH ON



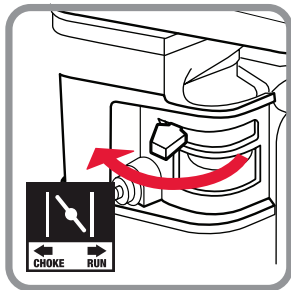
5. PULL START



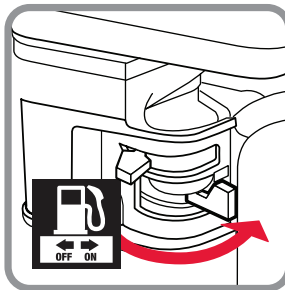
6. CHOKE TO RUN

**IMPORTANT:** Breaking-in the engine will help to ensure proper equipment and engine performance. The operational break-in period will last about 3 hours of use. During this period: • Do not apply a heavy load. • Do not operate the engine at its maximum speed.

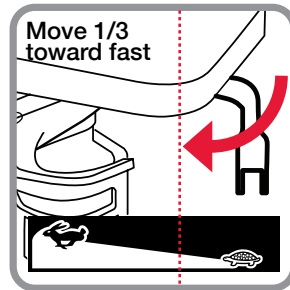
# Electric Starting Procedure



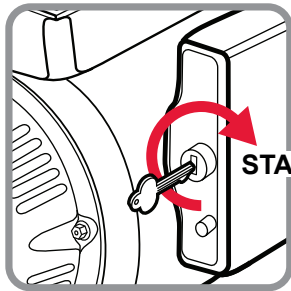
1. CLOSE CHOKE



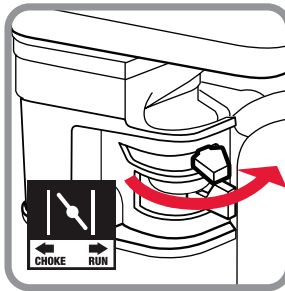
2. OPEN FUEL VALVE



3. ADJUST THROTTLE



4. TURN TO START



5. CHOKE TO RUN

**IMPORTANT:** Breaking-in the engine will help to ensure proper equipment and engine performance. The operational break-in period will last about 3 hours of use. During this period: • Do not apply a heavy load. • Do not operate the engine at its maximum speed.

Visit our website at: <http://www.harborfreight.com>  
Email our technical support at: [productsupport@harborfreight.com](mailto:productsupport@harborfreight.com)  
Email our engine support at: [predator@harborfreight.com](mailto:predator@harborfreight.com)