

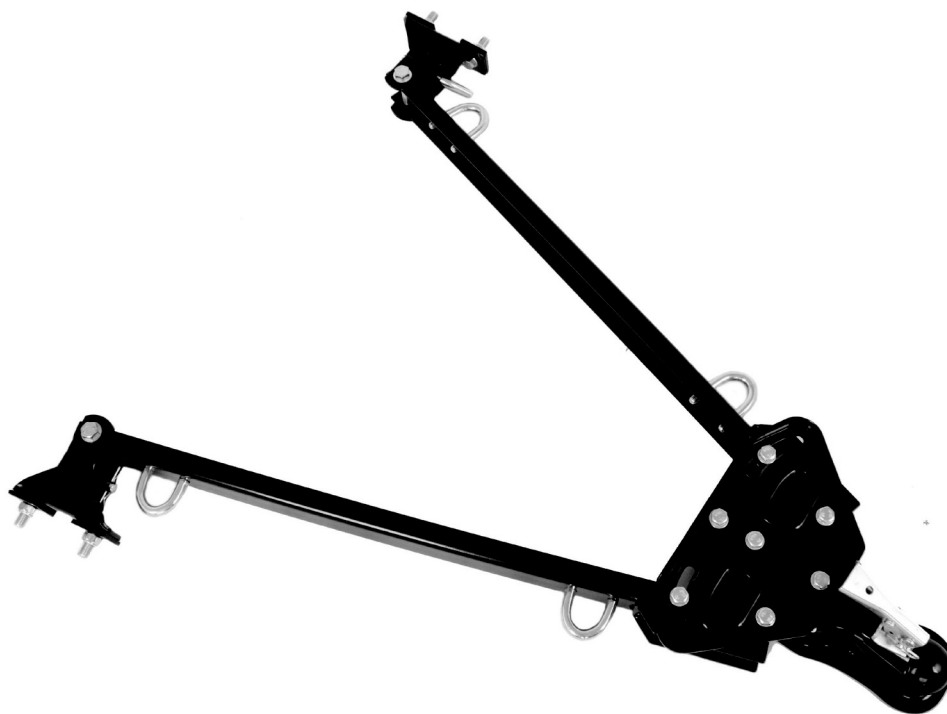
Owner's Manual & Safety Instructions

Save This Manual Keep this manual for the safety warnings and precautions, assembly, operating, inspection, maintenance and cleaning procedures. Write the product's serial number in the back of the manual near the assembly diagram (or month and year of purchase if product has no number). Keep this manual and the receipt in a safe and dry place for future reference.

21f

HAULMASTER

5000 LB CAPACITY ADJUSTABLE TOW BAR



Visit our website at: <http://www.harborfreight.com>
Email our technical support at: productsupport@harborfreight.com

61625

When unpacking, make sure that the product is intact and undamaged. If any parts are missing or broken, please call 1-888-866-5797 as soon as possible.

Copyright© 2021 by Harbor Freight Tools®. All rights reserved.
No portion of this manual or any artwork contained herein may be reproduced in any shape or form without the express written consent of Harbor Freight Tools. Diagrams within this manual may not be drawn proportionally. Due to continuing improvements, actual product may differ slightly from the product described herein. Tools required for assembly and service may not be included.

⚠WARNING

Read this material before using this product. Failure to do so can result in serious injury. **SAVE THIS MANUAL.**

Specifications

| | |
|-------------------------|------------|
| Maximum Towing Capacity | 5000 lb. |
| Coupler Ball Capacity | 2" |
| Mounting Width Capacity | 24" to 43" |

IMPORTANT SAFETY INFORMATION

Assembly Precautions

1. Assemble only according to these instructions. Improper assembly can create hazards.
2. Wear ANSI-approved safety goggles and heavy-duty work gloves during assembly.
3. Keep assembly area clean and well lit.
4. Keep bystanders out of the area during assembly.
5. Do not assemble when tired or when under the influence of alcohol, drugs or medication.
6. Weight capacity and other product capabilities apply to properly and completely assembled product only.

Use Precautions

1. This product is not a toy. Do not allow children to play with or near this item.
2. Use as intended only.
3. Inspect before every use; do not use if parts are loose or damaged.
4. Do not exceed listed weight capacity. **Be aware of dynamic loading!** Sudden load movement may briefly create excess load causing product failure.
5. Maintain product labels and nameplates. These carry important safety information. If unreadable or missing, contact Harbor Freight Tools for a replacement.

Specific Safety Warnings

1. To avoid personal injury and/or property damage, do not exceed the Tow Bar's maximum towing capacity of 5,000 pounds or the maximum tongue weight of 750 pounds. The towing capacity rating includes the towed vehicle, additional towing equipment, etc. The tongue weight capacity rating refers to the downward force exerted on the Hitch Ball (not included) by the towed vehicle including cargo on board.
2. Use a public, commercial scale to determine the actual weight of the towed vehicle and its payload. Do not exceed the weight capacity of any towing equipment.
3. Tow at your own risk. Failure to heed and follow all instructions and warnings can result in a vehicle accident, personal injury and/or property damage. Harbor Freight Tools cannot be held responsible for any damage incurred while using the Tow Bar.
4. Make sure to read and fully understand the tow vehicle manufacturer's manual to determine the proper towing capacities.
5. Make sure to read and fully understand the towed vehicle manufacturer's manual to determine the proper additional towing equipment needed.
6. Before each use, always examine the Tow Bar for loose bolts and nuts, structural cracks and bends, and any other condition that may affect its safe operation. Do not use the Tow Bar even if minor damage appears.
7. Before each use, always attach Safety Chains (not included) to the towing vehicle and towed vehicle. Make sure the Safety Chains are attached to the towing vehicle with the same length for each side. Do not allow the Safety Chains to drag on the ground. Inspect the Safety Chains before every tow.
8. Make sure to connect the electrical system from the towing vehicle to the towed vehicle. Never tow a vehicle without the running lights and brake lights connected and in proper working condition.
9. Make sure the Coupler and the vehicle's Hitch Ball (not included) are of equal mating size (2") and are rated equal to or greater than the weight of the towed vehicle and its payload.
10. Do not exceed 55 miles per hour when using the Tow Bar. Excess speed is a major cause of vehicular accidents.

11. Care must be taken when backing up a towed vehicle. Only back up the towed vehicle on a straight path. If the towed vehicle is allowed to turn off the straight path while backing up, the vehicle could jackknife, causing severe damage to the Tow Bar, towed vehicle, and towing vehicle.
12. Never drive the towed vehicle while the Tow Bar is attached to the front.
13. Never tow a vehicle with passengers or animals riding in the towed vehicle.
14. Contact your local Department of Motor Vehicles (or other regulatory agency) for pertinent regulations before installation or use of this Tow Bar. Always use this product in full accord with all federal, state, and local laws.
15. Connection of this Tow Bar must only be attempted on flat, level ground.
16. **WARNING!** Use extreme caution if a vehicle suddenly sways while being towed. A vehicle that sways is extremely dangerous and can cause loss of control of the towing vehicle and towed vehicle. If swaying occurs, gradually slow down and drive to a safe location of the road to correct the problem. Do not brake suddenly or hard, as this will intensify the swaying and make the towing vehicle and towed

vehicle even more difficult to control. Turbulence from another vehicle, wind gusts, downgrades, shifting cargo or tire failure also may be the cause of swaying. It is the driver's responsibility to assess the situation and take appropriate action. If the swaying problem cannot be corrected, seek help from a qualified towing professional.

17. Before every tow, check all towing equipment. Repair or replace any damaged equipment. When towing over a long distance recheck all equipment at short, regular intervals. Make sure to check tire inflation for both the towing vehicle and towed vehicle.
18. Drive safely. When the weight of a towed vehicle is coupled to a towing vehicle, the effect of the additional weight will diminish the performance of the towing vehicle, resulting in decreased acceleration of the towing vehicle and increased stopping distances. The added weight will also cause an adverse affect on the towing vehicle's handling characteristics. Always reduce speed when towing a vehicle.
19. **WARNING!** The warnings, precautions, and instructions discussed in this manual cannot cover all possible conditions and situations that may occur. The operator must understand that common sense and caution are factors, which cannot be built into this product, but must be supplied by the operator.

Assembly Instructions



Read the **ENTIRE IMPORTANT SAFETY INFORMATION** section at the beginning of this document including all text under subheadings therein before set up or use of this product.

1. Loosen the two Nuts (9B), and spread apart the Right Arm (4A) and Left Arm (5A). See Figure A.

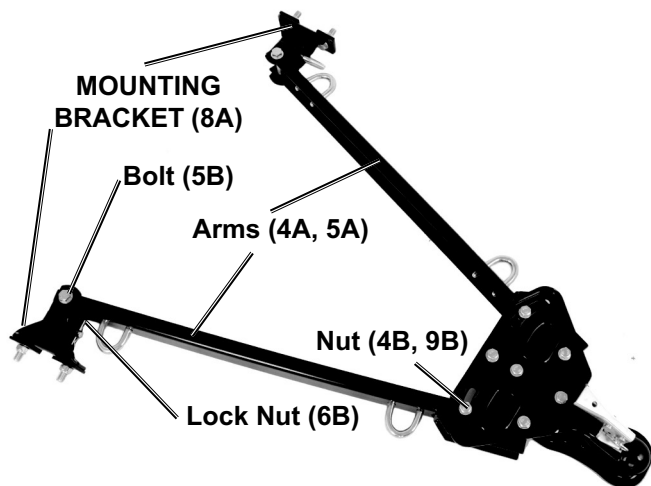


Figure A:

2. On the Right Arm (4A) and Left Arm (5A), unscrew the Lock Nuts (6B) and remove the Bolt (5B). Then slide the Mounting Brackets (8A) off the Right and Left Arms.

3. Select two locations in the front of the vehicle to be towed that fit ALL of the following criteria:
 - a. Can adequately support the entire towing weight of the vehicle without damage to the vehicle.
 - b. Have less than 5/8" mounting surface thickness, and can each support two 1/2" diameter holes drilled 3" apart.
 - c. Are less than 43" but more than 24" apart.
 - d. Can properly accommodate the protruding Bolts (8B), Support Plates (9A), and Lock Nuts (6B) needed for installation; allowing all the hardware to fit flush and level against a solid surface. (See Assy. Diagram.)
 - e. Are equally distant from the center of the vehicle, and are level.
 - f. Are free and clear from all electronics, sensors, or engine components.
 - g. Will not structurally weaken the vehicle.

4. After locations fitting all of the aforementioned requirements are found, drill the 1/2" diameter holes, 3" apart horizontally. Then install the Mounting Brackets (8A). See Figure B.

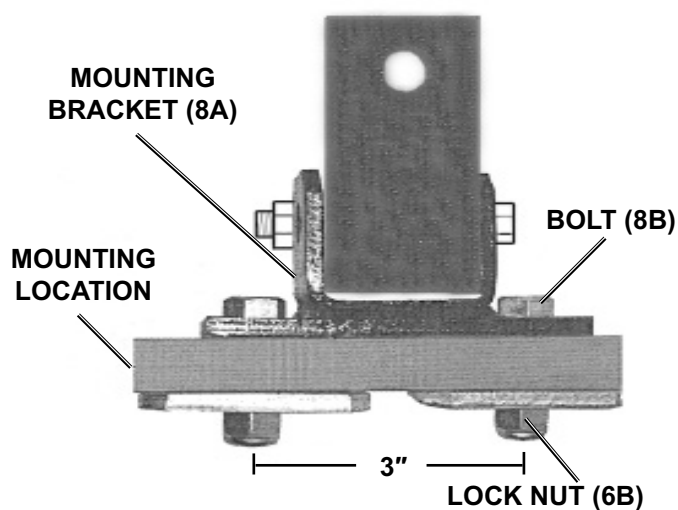


Figure B:

WARNING! If adequate mounting locations cannot be found or if there is any doubt about the suitability of the locations, have a professional mechanic install this product to the towed vehicle.

5. Re-attach the Tow Bar to the Mounting Brackets (8A). Re-tighten the two Bolts (8B). Then inspect the entire Tow Bar and tighten all nuts and bolts securely. See Figure A.

Operating Instructions



Read the **ENTIRE IMPORTANT SAFETY INFORMATION** section at the beginning of this document including all text under subheadings therein before set up or use of this product.

1. Only use a 2" Hitch Ball (not included) on the towing vehicle. See Figure C.

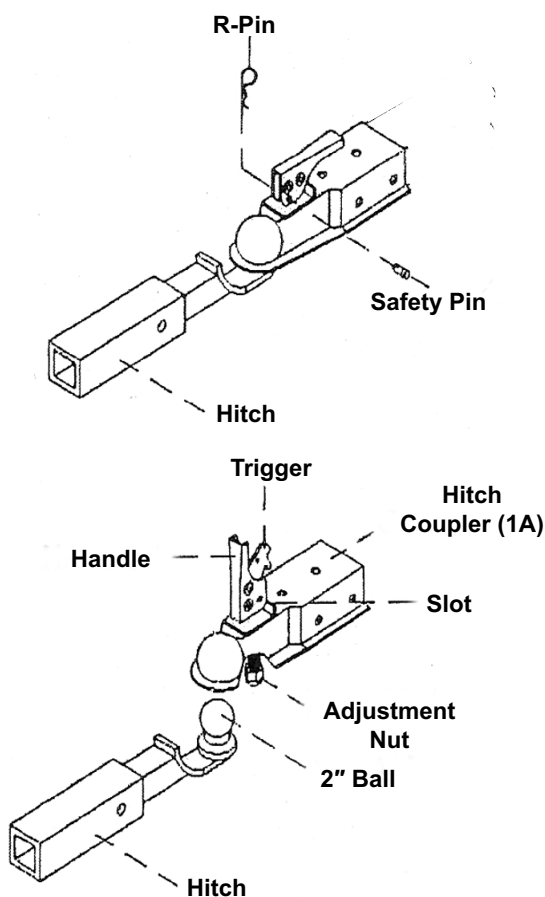


Figure C:

WARNING! This Tow Bar's Hitch Coupler (1A) MUST be properly secured to the Hitch Ball of the towing vehicle. After assembly and attachment, pull up and down on the Hitch Coupler to make sure the Hitch Ball is fitting snugly in the Hitch Coupler. There must be no play between the Hitch Ball and Hitch Coupler. If the Hitch Coupler is not secured properly, the Hitch Ball could come loose while the towed vehicle is in motion, possibly causing property damage, SERIOUS PERSONAL or INJURY.

NOTE: To reduce friction between the 2" Hitch Ball and Hitch Coupler (1A), apply a layer of heavy grease over the Hitch Ball.

2. Temporarily remove the R-Pin and Safety Pin from the Hitch Coupler (1A). Then, pull up on the Trigger and lift up on the Handle.
3. With assistance, place the Hitch Coupler (1A) over the vehicle's Hitch Ball and push down on the Handle until the Trigger locks in the slot. Pull up and down on the Hitch Coupler to make sure the Hitch Ball is fitting snugly in the Hitch Coupler.
4. There should be no play between Hitch Ball and Hitch Coupler. If there is play, tighten the Adjustment Nut with a 19MM socket (not included) until no play is present. If the Nut is too tight, the Handle will not lock.
5. Re-install the Safety Pin and R-Pin.

6. Make sure to attach each side of an appropriate Safety Chain (not included) equally from the front mounting U-Bolt (11B) to the towing vehicle's rear bumper or frame crossing them underneath the Hitch Coupler, leaving just enough slack to allow the vehicle to turn properly. See Figure D
7. Attach another pair of Safety Chains from the rear mounting U-Bolt (11B) underneath the Right and Left Arms (4A, 5A) to the frame of the towed vehicle as close to the front as possible. Allow only enough slack for the Tow Bar to pivot.
8. Connect the towing light wiring system (not included) according to its instructions.

NOTE: Make sure to consult the operator's manual of the towing vehicle for proper connection instructions.

CAUTION! Do not attempt to back up while using this Tow Bar. If the towed vehicle is allowed to turn off the straight path while backing up, the towed vehicle could jackknife, causing severe damage to the towed vehicle and to the towing vehicle. Even if the towed vehicle does not jackknife, backing up may damage the Tow Bar and towed vehicle, and the towed vehicle will not be able to be controlled properly.

9. Disengage the parking brake of the vehicle to be towed. Set the transmission to the neutral position, and make sure the steering wheel can turn freely. Some vehicles will require the key to be left in a certain position in the ignition (or other setup procedures to be followed) to allow the steering wheel to turn freely. See the vehicle manufacturer's documentation for details. If the towed vehicle is not properly prepared for towing, property damage or severe personal injury may result.

10. When towing the vehicle over long distances stop and check the tightness of all connections, at least every 100 miles.

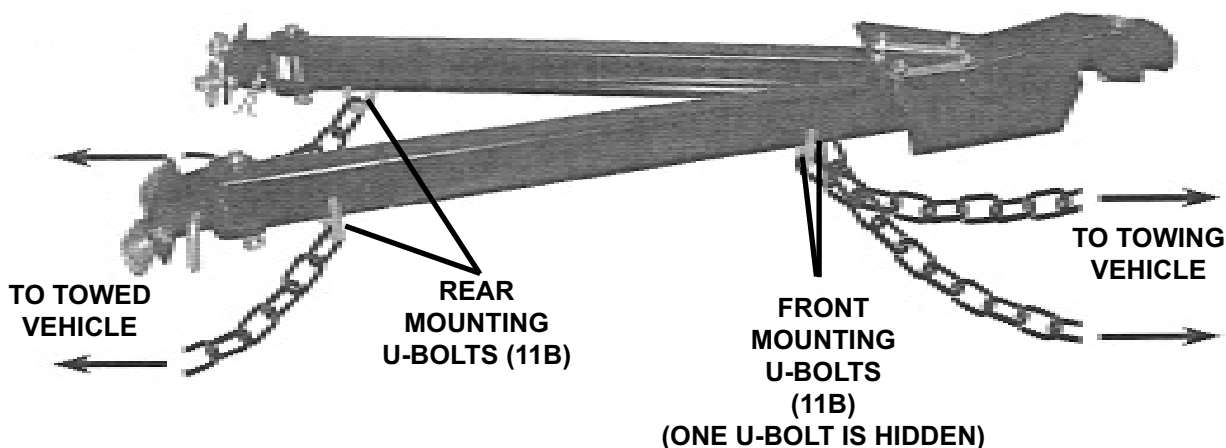


Figure D:

Maintenance



Procedures not specifically explained in this manual must be performed only by a qualified technician.

⚠️ WARNING

TO PREVENT SERIOUS INJURY:

Remove Tow Bar from vehicle before performing any inspection, maintenance, or cleaning procedures.

TO PREVENT SERIOUS INJURY FROM TOOL FAILURE:

Do not use damaged equipment. If abnormal noise or vibration occurs, have the problem corrected before further use.

Cleaning, Maintenance, and Lubrication

1. **BEFORE EACH USE**, inspect the general condition of the tool. Check for:
 - loose hardware,
 - misalignment or binding of moving parts,
 - cracked or broken parts, and
 - any other condition that may affect its safe operation.

2. **AFTER USE**, wipe external surfaces of the tool with clean cloth.

Note: Do not use solvents to wipe off the Tow Bar, as damage may result. If necessary, wipe with a damp cloth and mild detergent.

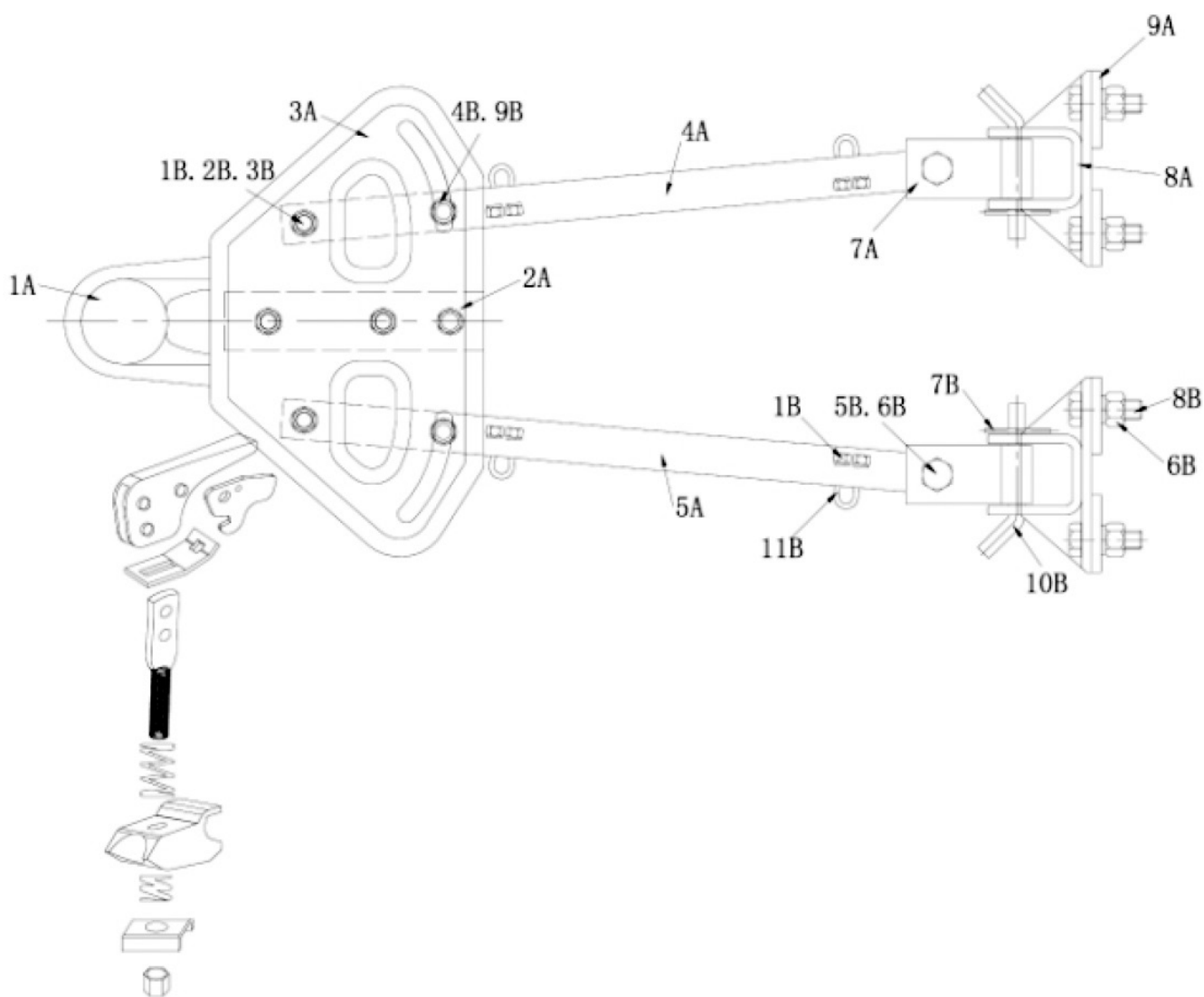
PLEASE READ THE FOLLOWING CAREFULLY

THE MANUFACTURER AND/OR DISTRIBUTOR HAS PROVIDED THE PARTS DIAGRAM IN THIS MANUAL AS A REFERENCE TOOL ONLY. NEITHER THE MANUFACTURER NOR DISTRIBUTOR MAKES ANY REPRESENTATION OR WARRANTY OF ANY KIND TO THE BUYER THAT HE OR SHE IS QUALIFIED TO MAKE ANY REPAIRS TO THE PRODUCT OR THAT HE OR SHE IS QUALIFIED TO REPLACE ANY PARTS OF THE PRODUCT. IN FACT, THE MANUFACTURER AND/OR DISTRIBUTOR EXPRESSLY STATES THAT ALL REPAIRS AND PARTS REPLACEMENTS SHOULD BE UNDERTAKEN BY CERTIFIED AND LICENSED TECHNICIANS AND NOT BY THE BUYER. THE BUYER ASSUMES ALL RISK AND LIABILITY ARISING OUT OF HIS OR HER REPAIRS TO THE ORIGINAL PRODUCT OR REPLACEMENT PARTS THERETO, OR ARISING OUT OF HIS OR HER INSTALLATION OF REPLACEMENT PARTS THERETO.

Parts List and Diagram

| Part | Description | Qty |
|------|------------------|-----|
| 1A | COUPLER | 1 |
| 2A | COUPLER BASE | 1 |
| 3A | ADJUSTABLE PLATE | 1 |
| 4A | RIGHT ARM | 1 |
| 5A | LEFT ARM | 1 |
| 7A | ARM BRACKET | 2 |
| 8A | MOUNTING BRACKET | 2 |
| 9A | SUPPORT PLATE | 4 |
| 1B | M10 LOCK NUT | 13 |
| 2B | SPRING WASHER | 5 |

| Part | Description | Qty |
|------|--------------------|-----|
| 3B | BOLT (M10×35) | 7 |
| 4B | NUT W/WASHER (M10) | 2 |
| 5B | BOLT (M12×85) | 2 |
| 6B | LOCK NUT (M12) | 6 |
| 7B | HAIR PIN (2.5MM) | 2 |
| 8B | BOLT (M12×41) | 4 |
| 9B | NUT M10 | 2 |
| 10B | LATCH 12MM | 2 |
| 11B | U-BOLT (M10) | 4 |



Record Product's Serial Number Here:

Note: If product has no serial number, record month and year of purchase instead.

Note: Some parts are listed and shown for illustration purposes only, and are not available individually as replacement parts. Specify UPC 193175439284 when ordering parts.

Limited 90 Day Warranty

Harbor Freight Tools Co. makes every effort to assure that its products meet high quality and durability standards, and warrants to the original purchaser that this product is free from defects in materials and workmanship for the period of 90 days from the date of purchase. This warranty does not apply to damage due directly or indirectly, to misuse, abuse, negligence or accidents, repairs or alterations outside our facilities, criminal activity, improper installation, normal wear and tear, or to lack of maintenance. We shall in no event be liable for death, injuries to persons or property, or for incidental, contingent, special or consequential damages arising from the use of our product. Some states do not allow the exclusion or limitation of incidental or consequential damages, so the above limitation of exclusion may not apply to you. THIS WARRANTY IS EXPRESSLY IN LIEU OF ALL OTHER WARRANTIES, EXPRESS OR IMPLIED, INCLUDING THE WARRANTIES OF MERCHANTABILITY AND FITNESS.

To take advantage of this warranty, the product or part must be returned to us with transportation charges prepaid. Proof of purchase date and an explanation of the complaint must accompany the merchandise. If our inspection verifies the defect, we will either repair or replace the product at our election or we may elect to refund the purchase price if we cannot readily and quickly provide you with a replacement. We will return repaired products at our expense, but if we determine there is no defect, or that the defect resulted from causes not within the scope of our warranty, then you must bear the cost of returning the product.

This warranty gives you specific legal rights and you may also have other rights which vary from state to state.

The logo for HaulMaster, featuring the word "HAULMASTER" in a bold, italicized, sans-serif font. The letters are white with a thick black outline, and a registered trademark symbol (®) is located at the bottom right of the word.

26541 Agoura Road • Calabasas, CA 91302 • 1-888-866-5797