

Owner's Manual & Safety Instructions

Save This Manual Keep this manual for the safety warnings and precautions, assembly, operating, inspection, maintenance and cleaning procedures. Write the product's serial number in the back of the manual near the assembly diagram (or month and year of purchase if product has no number). Keep this manual and the receipt in a safe and dry place for future reference.

REV 15e

PORTABLE fish finder



ITEM 62675

Visit our website at: <http://www.harborfreight.com>
Email our technical support at: productsupport@harborfreight.com

When unpacking, make sure that the product is intact and undamaged. If any parts are missing or broken, please call 1-888-866-5797 as soon as possible.

Copyright© 2015 by Harbor Freight Tools®. All rights reserved.

No portion of this manual or any artwork contained herein may be reproduced in any shape or form without the express written consent of Harbor Freight Tools. Diagrams within this manual may not be drawn proportionally. Due to continuing improvements, actual product may differ slightly from the product described herein. Tools required for assembly and service may not be included.

⚠WARNING

**Read this material before using this product.
Failure to do so can result in serious injury.
SAVE THIS MANUAL.**

Specifications

Batteries	4AA (sold separately)
Cable	35 ft
Sonar Angle	45°
Range	0-100 ft

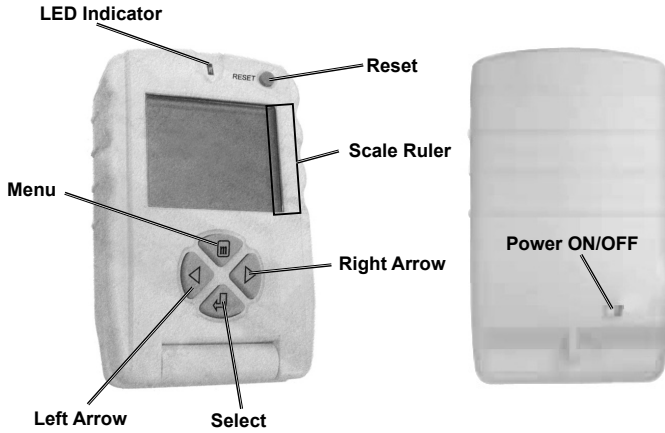
IMPORTANT SAFETY INFORMATION

General Safety Warnings

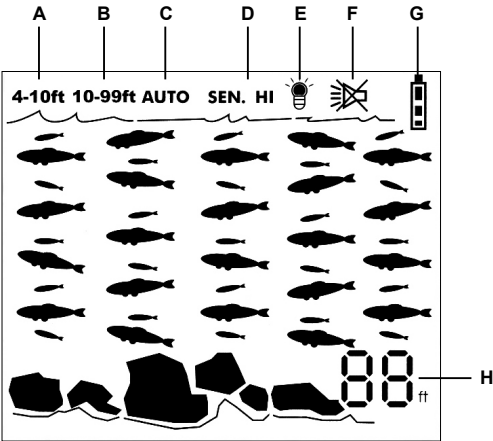
1. Keep children and bystanders out of the area while operating.
2. Do not use when tired or when under the influence of alcohol, drugs or medication.
3. Do not overreach. Keep proper footing and balance at all times. This enables better control in unexpected situations.
4. This product is not a toy. Do not allow children to play with or near this item.
5. Use as intended only.
6. Inspect before every use; do not use if parts are loose or damaged.
7. Do not operate more than one Fish Finder within a 100 ft radius.
8. Fish Finder accuracy will be affected by amount of debris in water.
9. Have product serviced by a qualified repair person using only identical replacement parts.
10. Maintain product labels and nameplates. These carry important safety information. If unreadable or missing, contact Harbor Freight Tools for a replacement.
11. The depth gauge feature on this Fish Finder is intended only as an aid in catching fish; not as a navigation device. Consult depth charts and pay attention to posted water depth warnings. This device should not be used as a navigational aid to prevent collision, grounding, boat damage, or personal injury.
12. Do not put the Fish Finder directly near any human or animal ear. Although the frequency of the SONAR is well out of the range of human hearing, there is a chance of damaging the inner ear.
13. Do not use near diving or swimming areas.
14. Do not immerse entire Fish Finder. Immersing the Display will permanently damage the unit.
15. Position batteries in proper polarity and do not install batteries of different types, charge levels, or capacities together.
16. WARNING: This product contains di (2-ethylhexyl) phthalate (DEHP), a chemical known to the State of California to cause cancer and birth defects or other reproductive harm. (California Health & Safety Code § 25249.5, *et seq.*)
17. The warnings, precautions, and instructions discussed in this instruction manual cannot cover all possible conditions and situations that may occur. It must be understood by the operator that common sense and caution are factors which cannot be built into this product, but must be supplied by the operator.



Functions



On-Screen Operation



A	4-10 ft	Detecting depth between 4-10 ft.
B	10-99 ft	Detecting depth between 10-99 ft.
C	AUTO	Auto detect landscape every 10 seconds
D	SEN. HI	High sensitivity for detecting fish
E		Light ON
F		Speaker ON
		Speaker OFF
G		Full Battery
		Low Battery
		Very Low Battery
H		Depth Meter



Operating Instructions



Read the **ENTIRE IMPORTANT SAFETY INFORMATION** section at the beginning of this manual including all text under subheadings therein before set up or use of this product.

Set Up

1. Use a coin to open the Battery Cover and remove from unit. Observing polarity, insert 4 AA batteries into the unit. Replace Battery Cover.
4. Use fishing rods (not included) to guide Transducer to desired position and tighten Cable.

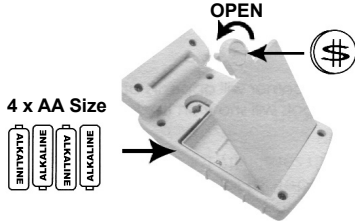


Figure A

2. Insert the 3-Pin Adapter on the Transducer Cable into the receptacle on the base of the unit, taking care to align the pins properly. Attach the Bracket to the unit using the two screws.
3. Attach the Float to the Transducer Cable. Pull out the rubber Stopper to adjust the length of Transducer Cable between the Transducer and the Float. The length should be at least 15-25 cm (6"-10").

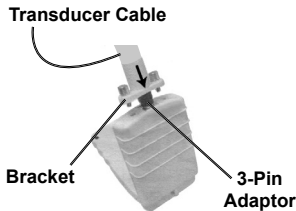


Figure B

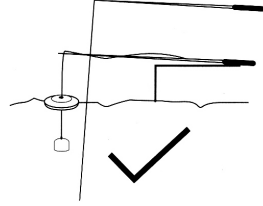


Figure C

5. Add additional floats (not included) to the Cable to keep it floating on the water's surface. Do not allow cable to be "hooked" by underwater rocks or debris.

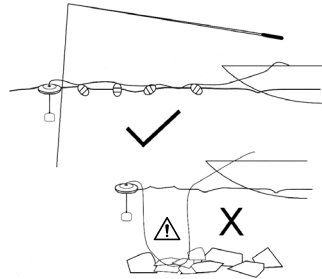


Figure D



General Operating Instructions

SONAR (SOUND Navigation And Ranging) works by sending out a specific audio signal that bounces off objects and is then read by the unit to provide a graphic display.

CAUTION: The Transducer can be used directly in the water to look for Fish, but the Display unit should never be immersed.

1. Press the **POWER** button on the back of the unit to turn the Fish Finder on.
2. Adjust the unit viewing angle with hinge.
3. Press the **MENU** button to bring up the Functions Menu, then press the Right or Left Arrows to cycle through options. Press **SELECT** to choose an option.

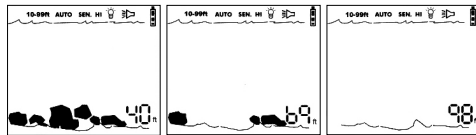


Figure F: Depth Meter Landscapes

4. Options include:
 - a. Depth Range (“4-10ft” and “10-99ft”). Allows manual selection of a specific depth to scan. If the depth of the water is greater than the depth range setting, the bottom will not be visible on screen.
 - b. Auto Detect. Updates the reading of the landscape every ten seconds
 - c. Sensitivity. Adjusts the level of sonar returns shown on the Display. A higher number will yield more returns and find more fish, whereas a lower number will remove clutter from the Display. The Fish Finder will not work well in areas where the water is especially murky or stirred up.
 - d. LED Backlight Functions, allows the backlight to be turned on or off. Continuous operation of the backlight significantly decreases battery lifespan.
 - e. Speaker volume (which may be silenced when a fish is detected).
 - f. Scale Indicator. Used to see where (within the selected range) the fish may be found.

6. The size and number of the fish symbols indicates the size and number of fish.

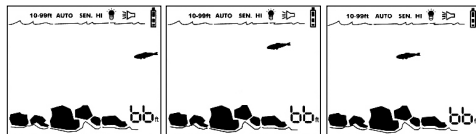


Figure G: Big Fish

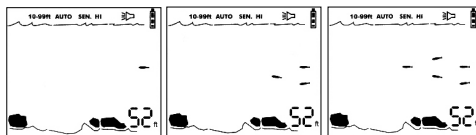


Figure H: Small Fish

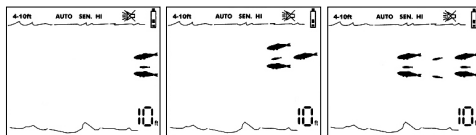


Figure I: A Group of Fish

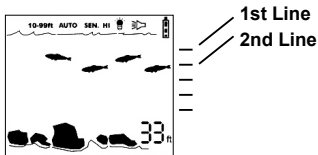


Figure E: Fish Location

5. The Depth Meter in the lower right corner will appear after the unit is powered on. Stone symbols will indicate the shape of the landscape under water.

7. An alarm will sound to indicate a group of fish.
8. To prevent accidents, turn off Fish Finder after use. Clean, then store the unit indoors out of children’s reach.



Maintenance and Servicing



Procedures not specifically explained in this manual must be performed only by a qualified technician.

⚠️ WARNING

TO PREVENT SERIOUS INJURY FROM TOOL FAILURE:
Do not use damaged equipment. If abnormal noise or vibration occurs, have the problem corrected before further use.

Cleaning, Maintenance, and Lubrication

1. **BEFORE EACH USE**, inspect the general condition of the Fish Finder. Check for:
 - loose hardware,
 - misalignment or binding of moving parts,
 - damaged cord/electrical wiring,
 - cracked or broken parts, and
 - any other condition that may affect its safe operation.
2. **AFTER USE**, remove Cable Bracket and unplug Transducer Cable. Clean the Cable with fresh water and a cloth (do not get 3-Pin Adapter wet). Wipe external surfaces of the Fish Finder with a soft, clean cloth. Remove the batteries for long-term storage and store the product indoors out of children's reach.

Note: Replacement parts are not available for this item.

Record Serial Number Here:

Note: If product has no serial number, record month and year of purchase instead.

Limited 90 Day Warranty

Harbor Freight Tools Co. makes every effort to assure that its products meet high quality and durability standards, and warrants to the original purchaser that this product is free from defects in materials and workmanship for the period of 90 days from the date of purchase. This warranty does not apply to damage due directly or indirectly, to misuse, abuse, negligence or accidents, repairs or alterations outside our facilities, criminal activity, improper installation, normal wear and tear, or to lack of maintenance. We shall in no event be liable for death, injuries to persons or property, or for incidental, contingent, special or consequential damages arising from the use of our product. Some states do not allow the exclusion or limitation of incidental or consequential damages, so the above limitation of exclusion may not apply to you. THIS WARRANTY IS EXPRESSLY IN LIEU OF ALL OTHER WARRANTIES, EXPRESS OR IMPLIED, INCLUDING THE WARRANTIES OF MERCHANTABILITY AND FITNESS.

To take advantage of this warranty, the product or part must be returned to us with transportation charges prepaid. Proof of purchase date and an explanation of the complaint must accompany the merchandise. If our inspection verifies the defect, we will either repair or replace the product at our election or we may elect to refund the purchase price if we cannot readily and quickly provide you with a replacement. We will return repaired products at our expense, but if we determine there is no defect, or that the defect resulted from causes not within the scope of our warranty, then you must bear the cost of returning the product.

This warranty gives you specific legal rights and you may also have other rights which vary from state to state.

