

Owner's Manual & Safety Instructions

Save This Manual Keep this manual for the safety warnings and precautions, assembly, operating, inspection, maintenance and cleaning procedures. Write the product's serial number in the back of the manual near the assembly diagram (or month and year of purchase if product has no number). Keep this manual and the receipt in a safe and dry place for future reference.

24b

PITTSBURGH® **RADIATOR PRESSURE TEST KIT**



Visit our website at: <http://www.harborfreight.com>
Email our technical support at: productsupport@harborfreight.com

63862

When unpacking, make sure that the product is intact and undamaged. If any parts are missing or broken, please call 1-888-866-5797 as soon as possible.

Copyright© 2024 by Harbor Freight Tools®. All rights reserved.

No portion of this manual or any artwork contained herein may be reproduced in any shape or form without the express written consent of Harbor Freight Tools. Diagrams within this manual may not be drawn proportionally. Due to continuing improvements, actual product may differ slightly from the product described herein.

Tools required for assembly and service may not be included.

⚠WARNING

Read this material before using this product. Failure to do so can result in serious injury. **SAVE THIS MANUAL.**

Important Safety Information

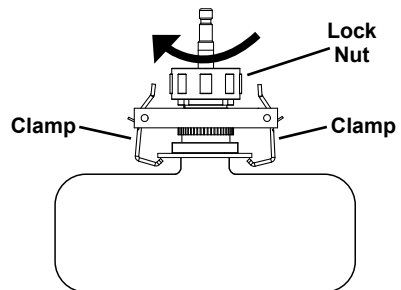
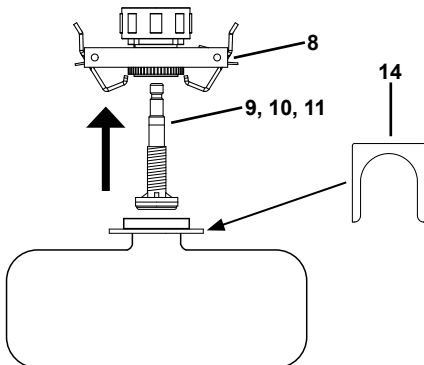
1. **TO PREVENT STEAM BURNS, DO NOT OPEN CAP OF HOT OR WARM RADIATOR.**
2. **Pressurize only with hand pump. Do not use engine to pressurize system.**
3. Loosen the radiator cap slowly.
4. Keep away from hot engine parts and fluids.
5. Use this product only according to these instructions. Improper use can create hazards.
6. Wear ANSI-approved safety goggles and heat resistant work gloves during product assembly and use.
7. Refer to the vehicle's service manual for specific radiator pressure testing instructions before use.
8. Clean up coolant spills immediately. Dispose of fluids according to local, state, and federal codes and regulations.
9. Keep work area clean and well lit.
10. Do not overreach. Keep proper footing and balance at all times. This enables better control of the product in unexpected situations.
11. Keep bystanders out of the area during assembly and use.
12. Do not assemble or operate when tired or when under the influence of drugs or medication.
13. This product is not a toy. Do not allow children to play with or near this product.
14. Use as intended only.
15. Inspect before every use. Do not use if parts missing or damaged.
16. Maintain product labels and nameplates. These carry important safety information. If unreadable or missing, contact Harbor Freight Tools for a replacement.

Operating Instructions

1. Refer to the vehicle's service manual for specific radiator pressure testing instructions.
2. Loosen the vehicle's radiator cap slowly to relieve any excess pressure before removing the cap completely. Do not open the cap of a hot radiator.
3. Select the Proper Adapter and configuration of the Stationary Seat accessories. Securely attach the adapter to the filler neck of the radiator or expansion tank.
4. Attach the Quick Connector of the Hand Pump onto the Adapter.
5. Rapidly pump the Hand Pump while watching the pressure gauge. Pressurize the radiator up to the optimal pressure only—Do not overpressurize the radiator. Readings normally range 12~15 PSI. If the pressure level is too low, there may be a leak in the radiator or hose.
6. Once the test is complete, release the air pressure by pressing the Pressure Release Valve on the Hand Pump. Then disconnect the Quick Coupler and Adapter assembly.
7. Store the Kit in its Case in a clean, dry, safe location out of reach of children.

Adjustable Seat Instructions

1. Use the Adjustable Seat (8) to test the cooling system when a vehicle has an expansion tank or radiator with a standard neck (i.e. not threads).
2. The Adjustable Seat has spring-loaded clamps that fit under the flange on the radiator/expansion tank filler neck to secure the Adapter.
3. If the filler neck flange is too small to secure the Adjustable Seat, place the U-Shaped Flange Clip (14) under the filler neck flange and clamp onto the Flange Clip instead.
4. Determine appropriate size threaded Seat for the application: 50mm Seat (9), 35mm Seat (10), or 27mm Seat (11).
5. Insert threaded Seat into Adjustable Seat and secure the Adjustable Seat to the filler neck with the clamps.
6. Turn the lock nut on the Adjustable Seat clockwise to push the threaded Seat down until tension is felt and a seal is achieved—Do not overtighten.
7. Attach the Quick Connector of the Hand Pump onto the Adapter.
8. Rapidly pump the Hand Pump while watching the pressure gauge. Pressurize the radiator up to the optimal pressure only—Do not overpressurize the radiator. Readings normally range 12~15 PSI. If the pressure level is too low, there may be a leak in the radiator or hose.
9. Once the test is complete, release the air pressure by pressing the Pressure Release Valve on the Hand Pump. Then disconnect the Quick Coupler and Adapter assembly.
10. Store the Kit in its Case in a clean, dry, safe location out of reach of children.



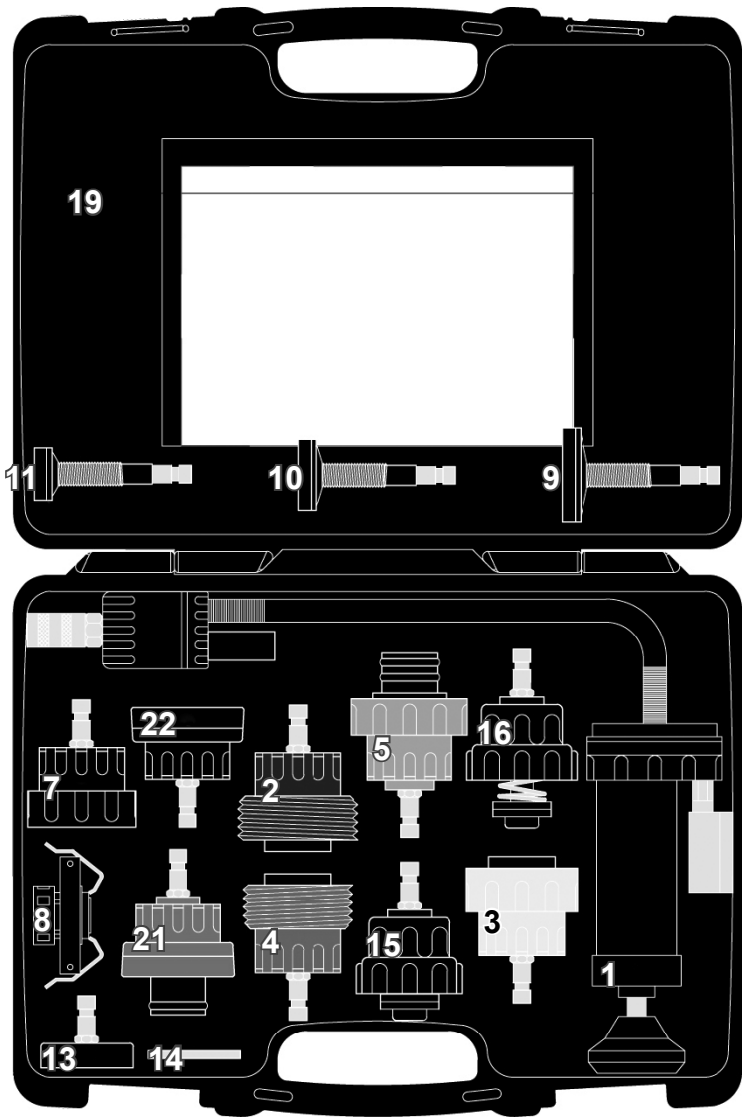
Parts List and Diagram

Parts List

Part	Description	Function*	Part	Description	Function*
1	Pump		10	35mm Seat	Use with 8 for Japanese and European cars including: Suzuki, Nissan, Mitsubishi, Chrysler, Citroen, Mercedes
2	Blue Adapter	Skoda®, SAAB®, Ford®, Daewoo®, Audi® A4, A5, A6	11	27 mm Seat	Use with 8 for Japanese and European cars including: Toyota, Suzuki, Nissan
3	Yellow Adapter	Skoda, Seat®, Audi, Opel®, VW®, Ford	13	Adapter	Kia®
4	Red Adapter	Seat, Alfa Romeo®, Audi, BMW®	14	U-Shaped Flange Clip	Use with adapters and seat accessories for: Toyota, Suzuki, Mitsubishi, Nissan
5	Orange Adapter	Land Rover®, BMW	15	Adapter	Honda, Toyota
7	Adapter	Lancia®, Volvo®, Land Rover, Renault®, Peugeot®, Opel®, Honda®, Fiat®, Citroen®, Audi, VW®	16	Adapter	Opel, Hyundai®, Honda, Mitsubishi, Ford, Nissan, Mazda®, Toyota
8	Adjustable Seat	Toyota®, Suzuki®, Nissan®, Mitsubishi®, Mercedes®, Chrysler®, Citroen	21	Green Adapter	GM®
9	50mm Seat	Use with 8 for Japanese and European cars	22	Adapter	GM, Ford
			19	Case	

***Note:** Kit may work for only some models under each indicated make.

Diagram



PLEASE READ THE FOLLOWING CAREFULLY

THE MANUFACTURER AND/OR DISTRIBUTOR HAS PROVIDED THE PARTS LIST AND ASSEMBLY DIAGRAM IN THIS DOCUMENT AS A REFERENCE TOOL ONLY. NEITHER THE MANUFACTURER OR DISTRIBUTOR MAKES ANY REPRESENTATION OR WARRANTY OF ANY KIND TO THE BUYER THAT HE OR SHE IS QUALIFIED TO MAKE ANY REPAIRS TO THE PRODUCT, OR THAT HE OR SHE IS QUALIFIED TO REPLACE ANY PARTS OF THE PRODUCT. IN FACT, THE MANUFACTURER AND/OR DISTRIBUTOR EXPRESSLY STATES THAT ALL REPAIRS AND PARTS REPLACEMENTS SHOULD BE UNDERTAKEN BY CERTIFIED AND LICENSED TECHNICIANS, AND NOT BY THE BUYER. THE BUYER ASSUMES ALL RISK AND LIABILITY ARISING OUT OF HIS OR HER REPAIRS TO THE ORIGINAL PRODUCT OR REPLACEMENT PARTS THERETO, OR ARISING OUT OF HIS OR HER INSTALLATION OF REPLACEMENT PARTS THERETO.



Record Serial Number Here: _____

Note: If product has no serial number, record month and year of purchase instead.

Note: Some parts are listed and shown for illustration purposes only, and are not available individually as replacement parts. Specify UPC 193175545268 when ordering parts.



Limited 90 Day Warranty

Harbor Freight Tools Co. makes every effort to assure that its products meet high quality and durability standards, and warrants to the original purchaser that this product is free from defects in materials and workmanship for the period of 90 days from the date of purchase. This warranty does not apply to damage due directly or indirectly, to misuse, abuse, negligence or accidents, repairs or alterations outside our facilities, criminal activity, improper installation, normal wear and tear, or to lack of maintenance. We shall in no event be liable for death, injuries to persons or property, or for incidental, contingent, special or consequential damages arising from the use of our product. Some states do not allow the exclusion or limitation of incidental or consequential damages, so the above limitation of exclusion may not apply to you. THIS WARRANTY IS EXPRESSLY IN LIEU OF ALL OTHER WARRANTIES, EXPRESS OR IMPLIED, INCLUDING THE WARRANTIES OF MERCHANTABILITY AND FITNESS.

To take advantage of this warranty, the product or part must be returned to us with transportation charges prepaid. Proof of purchase date and an explanation of the complaint must accompany the merchandise. If our inspection verifies the defect, we will either repair or replace the product at our election or we may elect to refund the purchase price if we cannot readily and quickly provide you with a replacement. We will return repaired products at our expense, but if we determine there is no defect, or that the defect resulted from causes not within the scope of our warranty, then you must bear the cost of returning the product.

This warranty gives you specific legal rights and you may also have other rights which vary from state to state.



PITTSBURGH®

26677 Agoura Road • Calabasas, CA 91302 • 1-888-866-5797