

Owner's Manual & Safety Instructions

Save This Manual Keep this manual for the safety warnings and precautions, assembly, operating, inspection, maintenance and cleaning procedures. Write the product's serial number in the back of the manual near the assembly diagram (or month and year of purchase if product has no number). Keep this manual and the receipt in a safe and dry place for future reference.

171

ICON™

PROFESSIONAL TORQUE WRENCH 1/2" DRIVE 3/8" DRIVE



64064 64065

Visit our website at: <http://www.harborfreight.com>
Email our technical support at: productsupport@harborfreight.com

When unpacking, make sure that the product is intact and undamaged. If any parts are missing or broken, please call 1-888-866-5797 as soon as possible.

Copyright© 2017 by Harbor Freight Tools®. All rights reserved.

No portion of this manual or any artwork contained herein may be reproduced in any shape or form without the express written consent of Harbor Freight Tools. Diagrams within this manual may not be drawn proportionally. Due to continuing improvements, actual product may differ slightly from the product described herein. Tools required for assembly and service may not be included.

⚠WARNING

**Read this material before using this product.
Failure to do so can result in serious injury.
SAVE THIS MANUAL.**

Specifications

Item	64065	64064
Torque Range	20 - 100 ft-lb	50 - 250 ft-lb
Drive	3/8"	1/2"
Clockwise Accuracy	± 4%	± 4%
Counterclockwise Accuracy	± 6%	± 6%

Important Safety Information



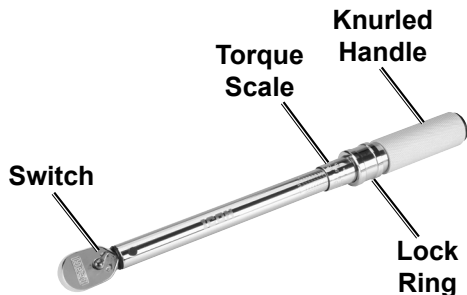
WARNING Read all safety warnings and instructions.

Failure to follow the warnings and instructions may result in injury.

Save all warnings and instructions for future reference.

1. Wear ANSI-approved safety goggles during use.
2. Do not use for loosening fasteners.
3. Use only within rated torque range.
4. Use as intended only. Do not use as hammer or pry bar.
5. Do not use handle extension to increase force. Do not use as a breaker bar.
6. Do not use a Torque Wrench that has been dropped. Have it tested before putting back into use.
7. Have the Torque Wrench calibrated and serviced only by a qualified technician.
8. Inspect before every use; do not use if damaged or if parts are loose.
9. Keep away from children.
10. Use only sockets with the correct drive and rated to at least the torque that will be applied to it.
11. The warnings, cautions, and instructions in this instruction manual cannot cover all possible conditions and situations that may occur. It must be understood by the operator that common sense and caution are factors which cannot be built into this product, but must be supplied by the operator.

Operating Instructions

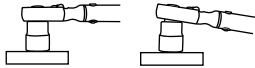
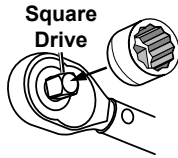


Note: The Torque Wrench is marked with Foot Pounds and Newton Meters (on opposite sides of Upper Handle). The following instructions illustrate use in Foot Pounds.

1. **BEFORE EVERY USE**, exercise Torque Wrench. Pull down Lock Ring (**see step 5 on page 3**), then perform the following exercise three times:
 - a. Turn Knurled Handle to the right until maximum torque setting is reached.
 - b. Turn handle to the left until minimum torque setting is reached.

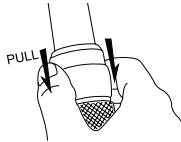
CAUTION! Wear ANSI-approved safety goggles during use.

2. Refer to equipment manufacturer's instructions for torque value.
3. Clean the fastener's threads. Dirty threads may result in a misleading torque reading.
4. Select socket that properly fits the fastener. Press socket firmly onto Square Drive so that Torque Wrench sits at a 90 degree angle.



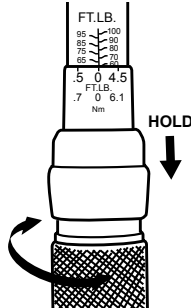
Correct **Incorrect**

5. Pull down Lock Ring and hold in place while adjusting torque.

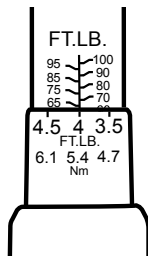


6. **To set torque value to 64:**

- a. Turn Knurled Handle until top of handle lines up with bottom horizontal mark for 60 and 0 lines up with center line



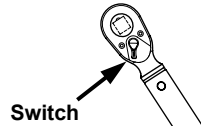
- b. Turn Knurled Handle clockwise until the 4 lines up with the center line. The torque value is set to 64 ft-lb. (60 + 4 = 64)



7. Release the Lock Ring to lock the Knurled Handle in place.

NOTICE: To prevent damage to the Torque Wrench, do not use for loosening fasteners.

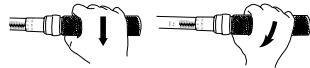
8. Set Switch to ON position to turn clockwise, or OFF position to turn counterclockwise.



Note: Tighten fastener with another tool until it is snug, then finish the operation with the Torque Wrench.

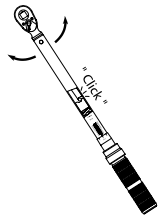
9. Place socket on fastener and grasp Knurled Handle.

Note: To ensure accuracy, hold center of Knurled Handle and rotate Wrench in a vertical motion.



Correct **Incorrect**

10. Pull smoothly and slowly until the handle breaks away and a click is heard or felt. **STOP PULLING!** The proper torque has been achieved. Further pulling may damage fastener.



11. Release pressure to allow the handle to reset for the next operation.
12. AFTER EVERY USE, set Wrench to the lowest torque setting.
13. Store Wrench inside its case, indoors, in a clean, dry location that is out of reach of children.

Maintenance and Servicing



Procedures not specifically explained in this manual must be performed only by a qualified technician.

CAUTION

TO PREVENT INJURY FROM TOOL FAILURE:

Do not use damaged equipment. If abnormal noise or vibration occurs, have the problem corrected before further use.

- BEFORE EACH USE**, inspect the general condition of the tool. Check for:
 - loose hardware,
 - misalignment or binding of moving parts,
 - cracked or broken parts, and
 - any other condition that may affect its safe operation.
- AFTER USE:**
 - Pull back Lock Ring and set Wrench to the lowest torque setting.
 - Wipe Wrench with a clean cloth. Do not use liquid on the cloth or immerse wrench in liquid.
- EVERY 6 MONTHS**, have the Torque Wrench calibrated and serviced by a qualified technician.

Note: Replacement parts are not available.

Limited Lifetime Warranty

Harbor Freight Tools warrants to the original purchaser that this ICON™ torque wrench shall be free from defects in materials and workmanship (excluding calibration) for its useful life. Additionally, this ICON™ torque wrench has been calibrated at the factory and will, when new and unused, meet the out-of-the-box accuracy standard described in the certificate of calibration for a period of 90 days from the date of purchase.

If your ICON™ torque wrench does not perform in accordance with this warranty, Harbor Freight Tools will, at its option and expense, repair or replace (or elect to refund the purchase price if we cannot repair or replace), your ICON™ torque wrench, which shall be your sole and exclusive remedy. To obtain warranty service, ICON™ products must be returned with proof of purchase to a Harbor Freight Tools retail store or returned by mail after contacting Harbor Freight Tools Product Support at 1-888-866-5797 and receiving a return authorization.

This warranty excludes normal wear and tear and does not apply to products subjected to misuse, use or operation other than for the intended purpose or not in accordance with the product manual, abuse, accident, modification or alteration, unauthorized repair, improper storage, neglect, or lack of maintenance (including failure to obtain professional recalibration of the ICON™ torque wrench every six months). This warranty is in lieu of all other warranties. Harbor Freight Tools is not liable for incidental, indirect, special, consequential, or punitive damages or costs arising from the use of this product. Some states do not allow the exclusion or limitation of incidental or consequential damages, so the above limitation may not apply to you. This warranty gives you specific legal rights, and you may also have other rights which vary from state to state.

