

Owner's Manual & Safety Instructions

Save This Manual Keep this manual for the safety warnings and precautions, assembly, operating, inspection, maintenance and cleaning procedures. Write the product's serial number in the back of the manual near the assembly diagram (or month and year of purchase if product has no number). Keep this manual and the receipt in a safe and dry place for future reference.

23j

Kenway™

12 VOLT LED MAGNETIC TOWING LIGHT KIT



Visit our website at: <http://www.harborfreight.com>
Email our technical support at: productsupport@harborfreight.com

64282

When unpacking, make sure that the product is intact and undamaged. If any parts are missing or broken, please call 1-888-866-5797 as soon as possible.

Copyright© 2023 by Harbor Freight Tools®. All rights reserved.
No portion of this manual or any artwork contained herein may be reproduced in any shape or form without the express written consent of Harbor Freight Tools. Diagrams within this manual may not be drawn proportionally. Due to continuing improvements, actual product may differ slightly from the product described herein. Tools required for assembly and service may not be included.

⚠WARNING

Read this material before using this product. Failure to do so can result in serious injury. **SAVE THIS MANUAL.**

Specifications

Electrical Requirements	12 VDC
Connector	4-way Flat

Important Safety Information

1. **Observe posted speed limits to prevent lights from blowing off.**
2. **Securely attach lights to vehicle before moving. Loose lights are a traffic hazard.**
3. **Thoroughly test vehicle lights and tow lights before use.**
4. Mount lights in proper orientation. Red lights must face backward. Improper orientation can confuse or distract drivers, causing a traffic hazard.
5. Install on a 12VDC negative ground circuit only. Installing on different circuit can result in electric shock, fire, or property damage.
6. Turn off vehicle and set the parking brake before installation or testing.
7. Do not use on marine trailers (such as boat trailers). Not waterproof.
8. Wear ANSI-approved impact safety goggles and heavy-duty work gloves during installation and use.
9. Do not modify the Towing Light Kit and do not use the Towing Light Kit for a purpose for which it was not intended.
10. Inspect before use; do not use if parts are loose or damaged. Inspect wires and connections for insulation damage or loose wires and repair before use.
11. People with pacemakers should consult their physician(s) before use. Electromagnetic fields in close proximity to heart pacemaker could cause pacemaker interference or pacemaker failure.
12. This product is not a toy. Keep it out of reach of children.
13. Check light position and function regularly when towing, especially on rough or uneven surfaces, or in windy conditions. The magnets may loose their grip on the vehicle under extreme circumstances.
14. **These Towing Lights are for temporary use only - do not permanently install on vehicle. Not a replacement for trailer lights.**
15. The warnings, precautions, and instructions discussed in this instruction manual cannot cover all possible conditions and situations that may occur. It must be understood by the operator that common sense and caution are factors which cannot be built into this product, but must be supplied by the operator.

 **SAVE THESE INSTRUCTIONS.**

Wiring

Note: Some towing vehicles may already have a 4-way Flat Connector, “Trunk” plug wired in. For those vehicles, skip the following wiring instructions.



If you do not have experience doing this type of automotive electrical wiring or if the wiring in your vehicle differs from that explained below, have an automotive service technician connect the wiring.

1. Identify the towing vehicle's wires in the trunk that correspond to the circuits indicated in Figure A. The white ground wire from the Pigtail (16) may be connected to a bolt or appropriate component on the vehicle to establish a ground instead of a ground wire.

Note: This is the wiring configuration of the “Trunk” 4-way Flat Connector (17). The towing vehicle may have a different wiring color code.

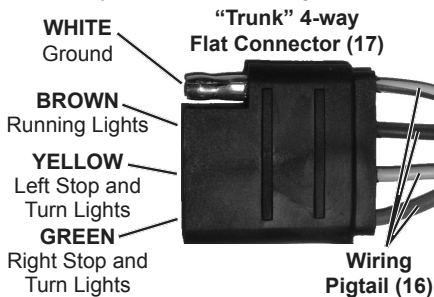


Figure A: Wiring Color Code

2. Connect the wires from the Wiring Pigtail (16) to the proper vehicle circuit wires using Wire Splices (15). When the supplied splices are used, generally no wire stripping or cutting would be required. Follow these three steps and refer to Figure B:
 - a. Insert the end of the Pigtail (16) wire into the 'dead-end' channel of the Splice. Insert the wire all the way to the end of the channel as shown.
 - b. Place the Splice around the correct vehicle circuit wire.

- c. Make sure both wires stay properly in place while the cover is closed until it snaps together.

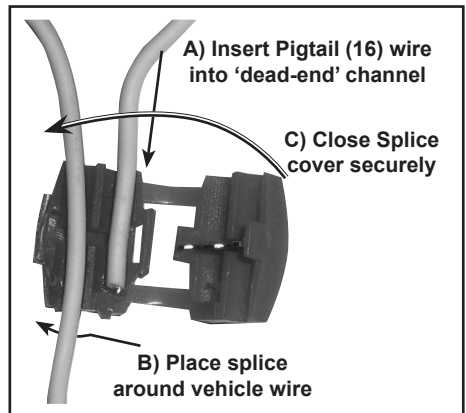


Figure B: Wire Splice (15) Usage

3. Verify that all wires are held securely.
4. Plug the “Trunk” Connector (17) into the “Trailer Connector (14).”

⚠CAUTION! If the Wire Splices (15) are used improperly and damage the vehicle's wiring, the vehicle's rear lights may fail, resulting in a traffic hazard. Have an assistant operate the vehicle's lights while you carefully check that the vehicle lights and the towing lights all work properly after installation.

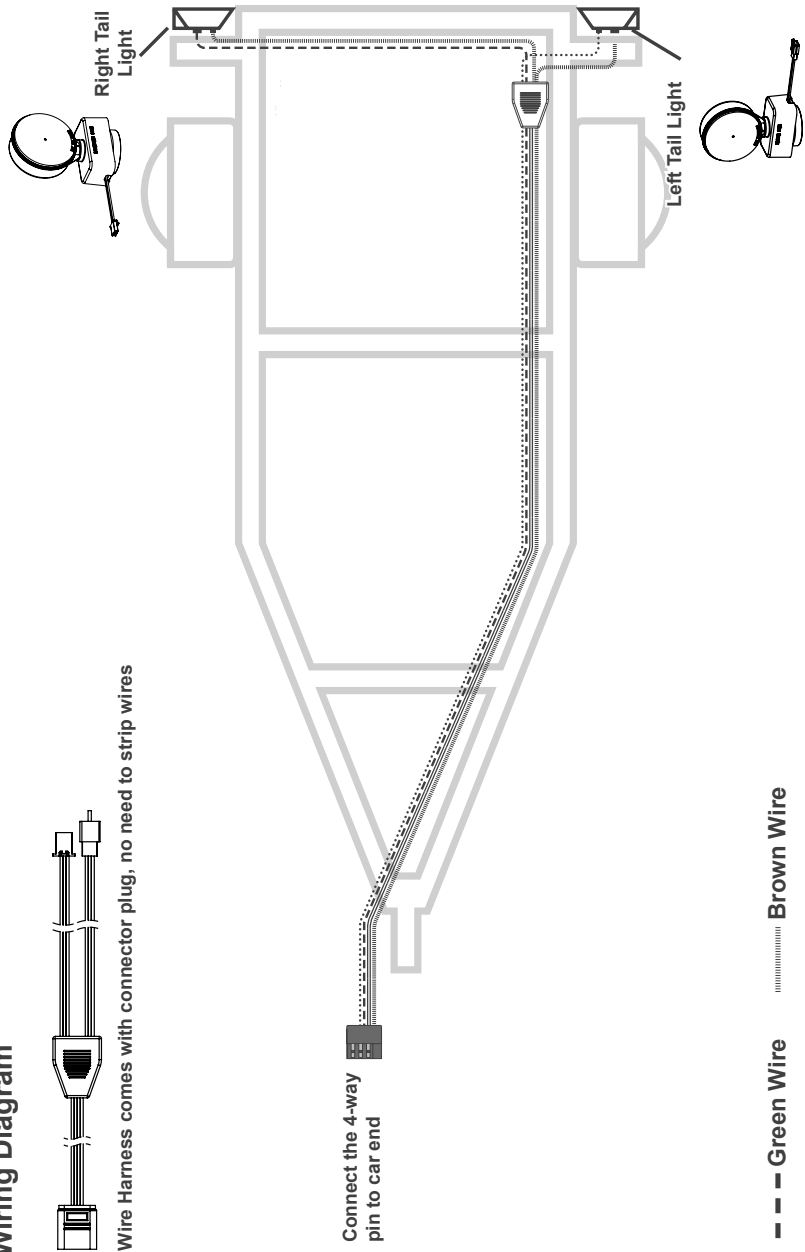
If any function of the vehicle or towing lights does not work, do not drive the vehicle. Carefully inspect the splice connection and the circuit that failed and repair the problem and retest before use.

5. Disconnect the “Trailer” Connector (14) if the light kit is not going to be used yet.

Wiring Diagram



Wire Harness comes with connector plug, no need to strip wires



- Green Wire Brown Wire
- Yellow Wire White Wire

Part list: Trailer tail light driverside 1pc, trailer tail light passengside 1pc, wire harness

Set up

1. To help avoid scratches, clean the mounting locations on the vehicle and clean the protective labels on the light magnets.
2. Set the lights on the back of the vehicle being towed so that the RED side of each light faces backwards.
 - a. Set the light that has a green wire and is marked "PASSENGER SIDE" on the passenger side.
 - b. Set the light that has a yellow wire and is marked "DRIVER SIDE" on the driver side.
 - c. Mount lights upright to a clean, horizontal surface.
 - d. Plug lights into main wire harness.
3. Make sure all wires are secured with enough slack to prevent binding when turning, but controlled enough to prevent roadway or moving part contact. When routing the wires along the trailer, avoid sharp objects, tight corners and exposure to the elements. Keep away from moving parts. Secure with cable ties where necessary and use rubber grommets when passing through cut-outs.
4. Plug the "Trunk" Connector into the "Trailer" Connector.
5. **⚠CAUTION! Have an assistant operate the vehicle's lights while you carefully check that the vehicle lights and the towing lights all work properly.**
 - Both tow lights should illuminate when the towing vehicle's running lights are switched on.
 - The tow lights should both light brightly as you apply the brake.
 - The tow light with a green wire should blink brightly with the right turn signal.
 - The tow light with a yellow wire should blink brightly with the left turn signal.

If ANY function of the vehicle lights or towing lights does not work, do not drive the towing vehicle until all lights are repaired and retested successfully.
6. The tow light kit is now ready for use. It will automatically illuminate when turn and brake pedal or turn signals in the towing vehicle are used.
7. **⚠CAUTION! Check light position and function regularly when towing, especially on rough or uneven surfaces.** The magnets cannot hold the lights to the vehicle in extreme circumstances.
8. After towing, disconnect "Trailer" Connector, remove tow lights from towed vehicle, clean with a moist cloth, and store in dry location out of reach of children. Do not drag the magnetic bases to disconnect, as they may scratch the body paint. Push to tilt then remove.

Notice: These Towing Lights are for temporary use only - do not permanently install on vehicle.

PLEASE READ THE FOLLOWING CAREFULLY

THE MANUFACTURER AND/OR DISTRIBUTOR HAS PROVIDED THE PARTS LIST AND ASSEMBLY DIAGRAM IN THIS DOCUMENT AS A REFERENCE TOOL ONLY. NEITHER THE MANUFACTURER OR DISTRIBUTOR MAKES ANY REPRESENTATION OR WARRANTY OF ANY KIND TO THE BUYER THAT HE OR SHE IS QUALIFIED TO MAKE ANY REPAIRS TO THE PRODUCT, OR THAT HE OR SHE IS QUALIFIED TO REPLACE ANY PARTS OF THE PRODUCT. IN FACT, THE MANUFACTURER AND/OR DISTRIBUTOR EXPRESSLY STATES THAT ALL REPAIRS AND PARTS REPLACEMENTS SHOULD BE UNDERTAKEN BY CERTIFIED AND LICENSED TECHNICIANS, AND NOT BY THE BUYER. THE BUYER ASSUMES ALL RISK AND LIABILITY ARISING OUT OF HIS OR HER REPAIRS TO THE ORIGINAL PRODUCT OR REPLACEMENT PARTS THERETO, OR ARISING OUT OF HIS OR HER INSTALLATION OF REPLACEMENT PARTS THERETO.

Parts List and Diagram

Part	Description	Qty
1	Light Base	1
2	Magnetic Base	1
3	Magnet	1
4	Wire Fixture	1
5	Self Tapping Screw	4
6	Light PCB	1
7	Bolt	1
8	Flat Washer	1
9	Nylon Lock Nut	1

Part	Description	Qty
10	Light Lens	1
11	Self Tapping Screw	4
12	PVC Protection Pad	1
13	Light Connector	1
14	Trailer 4-Way Flat Connector (not shown)	1
15	Wire Splice (not shown)	4
16	Wire Pigtail (not shown)	1
17	Trunk 4-Way Flat Connector (not shown)	1

Driver’s side parts list shown.
Passenger side is the same as Driver’s side (parts 1-13).

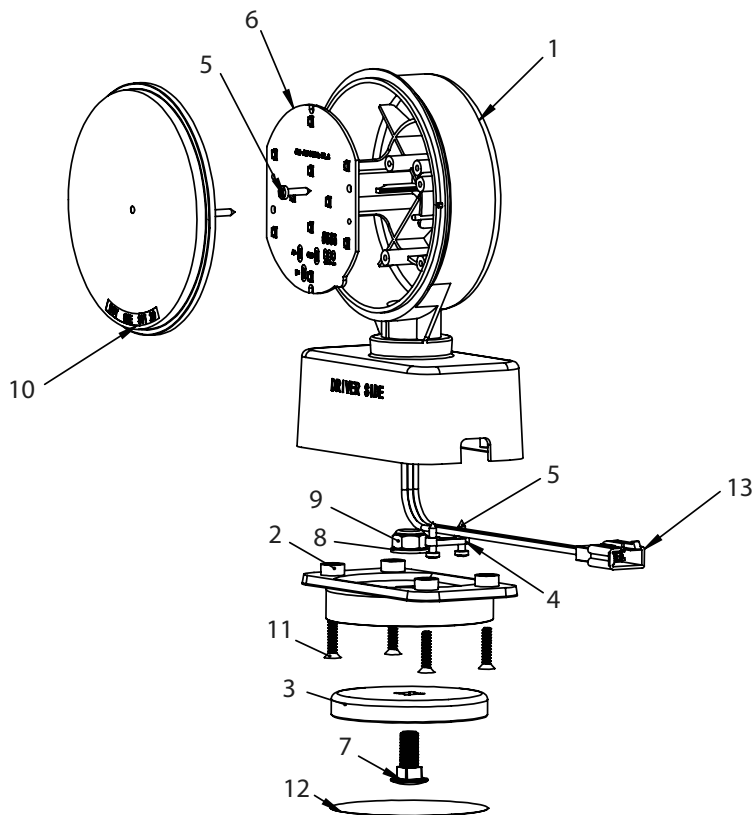
Record Serial Number Here: _____

Note: If product has no serial number, record month and year of purchase instead.

Note: Some parts are listed and shown for illustration purposes only, and are not available individually as replacement parts. Specify UPC 193175528643 when ordering parts.

Assembly Diagram

Driverside



Limited 90 Day Warranty

Harbor Freight Tools Co. makes every effort to assure that its products meet high quality and durability standards, and warrants to the original purchaser that this product is free from defects in materials and workmanship for the period of 90 days from the date of purchase. This warranty does not apply to damage due directly or indirectly, to misuse, abuse, negligence or accidents, repairs or alterations outside our facilities, criminal activity, improper installation, normal wear and tear, or to lack of maintenance. We shall in no event be liable for death, injuries to persons or property, or for incidental, contingent, special or consequential damages arising from the use of our product. Some states do not allow the exclusion or limitation of incidental or consequential damages, so the above limitation of exclusion may not apply to you. THIS WARRANTY IS EXPRESSLY IN LIEU OF ALL OTHER WARRANTIES, EXPRESS OR IMPLIED, INCLUDING THE WARRANTIES OF MERCHANTABILITY AND FITNESS.

To take advantage of this warranty, the product or part must be returned to us with transportation charges prepaid. Proof of purchase date and an explanation of the complaint must accompany the merchandise. If our inspection verifies the defect, we will either repair or replace the product at our election or we may elect to refund the purchase price if we cannot readily and quickly provide you with a replacement. We will return repaired products at our expense, but if we determine there is no defect, or that the defect resulted from causes not within the scope of our warranty, then you must bear the cost of returning the product.

This warranty gives you specific legal rights and you may also have other rights which vary from state to state.



26677 Agoura Road • Calabasas, CA 91302 • 1-888-866-5797