

# Owner's Manual & Safety Instructions

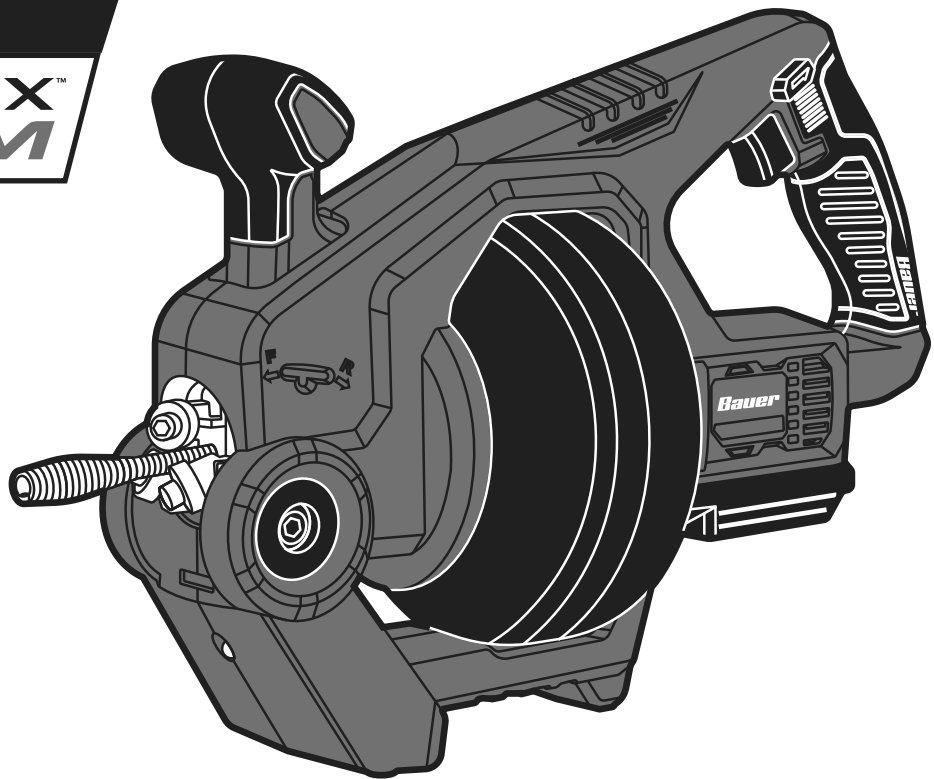
**Save This Manual** Keep this manual for the safety warnings and precautions, assembly, operating, inspection, maintenance and cleaning procedures. Write the product's serial number in the back of the manual (or month and year of purchase if product has no number). Keep this manual and the receipt in a safe and dry place for future reference.

22f

# **Bauer**™ *191101C-B*

## **20v**

### **HYPERMAX™ LITHIUM**



## **CORDLESS AUTOMATIC-FEED DRAIN CLEANER**

Battery and charger sold separately.

Visit our website at: <http://www.harborfreight.com>

Email our technical support at: [productsupport@harborfreight.com](mailto:productsupport@harborfreight.com)

**64483**

When unpacking, make sure that the product is intact and undamaged. If any parts are missing or broken, please call 1-888-866-5797 as soon as possible.

Copyright© 2019 by Harbor Freight Tools®. All rights reserved.

No portion of this manual or any artwork contained herein may be reproduced in any shape or form without the express written consent of Harbor Freight Tools. Diagrams within this manual may not be drawn proportionally. Due to continuing improvements, actual product may differ slightly from the product described herein.

Tools required for assembly and service may not be included.

### **⚠ WARNING**

Read this material before using this product. Failure to do so can result in serious injury. **SAVE THIS MANUAL.**

# Table of Contents

Safety .....	2	Maintenance .....	12
Specifications .....	7	Parts List and Diagram .....	14
Setup .....	7	Warranty .....	16
Operation .....	8		



## WARNING SYMBOLS AND DEFINITIONS

	This is the safety alert symbol. It is used to alert you to potential personal injury hazards. Obey all safety messages that follow this symbol to avoid possible injury or death.
	Indicates a hazardous situation which, if not avoided, will result in death or serious injury.
	Indicates a hazardous situation which, if not avoided, could result in death or serious injury.
	Indicates a hazardous situation which, if not avoided, could result in minor or moderate injury.
	Addresses practices not related to personal injury.

## IMPORTANT SAFETY INFORMATION

### General Power Tool Safety Warnings

#### WARNING

**Read all safety warnings and all instructions.**

*Failure to follow the warnings and instructions may result in electric shock, fire and/or serious injury.*

**Save all warnings and instructions for future reference.**

*The term "power tool" in the warnings refers to your battery-operated (cordless) power tool.*

### Work Area Safety

- 1. Keep work area clean and well lit.**  
*Cluttered or dark areas invite accidents.*
- 2. Do not operate power tools in explosive atmospheres, such as in the presence of flammable liquids, gases or dust.** *Power tools create sparks which may ignite the dust or fumes.*
- 3. Keep children and bystanders away while operating a power tool.**  
*Distractions can cause you to lose control.*

### Electrical Safety

**Do not expose power tools to rain or wet conditions.**

*Water entering a power tool will increase the risk of electric shock.*

# Personal Safety

1. **Stay alert, watch what you are doing and use common sense when operating a power tool. Do not use a power tool while you are tired or under the influence of drugs, alcohol or medication.**  
*A moment of inattention while operating power tools may result in serious personal injury.*
2. **Use personal protective equipment. Always wear eye protection.** Protective equipment such as dust mask, non-skid safety shoes, hard hat, or hearing protection used for appropriate conditions will reduce personal injuries.
3. **Prevent unintentional starting. Ensure the Trigger is in the off-position before connecting to power source, picking up or carrying the tool.**  
*Carrying power tools with your finger on the Trigger or energizing power tools that have the Trigger on invites accidents.*
4. **Do not overreach. Keep proper footing and balance at all times.** *This enables better control of the power tool in unexpected situations.*
5. **Dress properly. Do not wear loose clothing or jewelry. Keep your hair, clothing and gloves away from moving parts.** *Loose clothes, jewelry or long hair can be caught in moving parts.*
6. **If devices are provided for the connection of dust extraction and collection facilities, ensure these are connected and properly used.** *Use of dust collection can reduce dust-related hazards.*
7. **Only use safety equipment that has been approved by an appropriate standards agency.** *Unapproved safety equipment may not provide adequate protection. Eye protection must be ANSI-approved and breathing protection must be NIOSH-approved for the specific hazards in the work area.*

# Power Tool Use and Care

1. **Do not force the power tool. Use the correct power tool for your application.**  
*The correct power tool will do the job better and safer at the rate for which it was designed.*
2. **Do not use the power tool if the Trigger does not turn it on and off.**  
*Any power tool that cannot be controlled with the Trigger is dangerous and must be repaired.*
3. **Disconnect the battery pack from the power tool before making any adjustments, changing accessories, or storing power tools.** *Such preventive safety measures reduce the risk of starting the power tool accidentally.*
4. **Store idle power tools out of the reach of children and do not allow persons unfamiliar with the power tool or these instructions to operate the power tool.** *Power tools are dangerous in the hands of untrained users.*
5. **Maintain power tools. Check for misalignment or binding of moving parts, breakage of parts and any other condition that may affect the power tool's operation. If damaged, have the power tool repaired before use.** *Many accidents are caused by poorly maintained power tools.*
6. **Keep cutting tools sharp and clean.** *Properly maintained cutting tools with sharp cutting edges are less likely to bind and are easier to control.*
7. **Use the power tool, accessories and tool bits etc. in accordance with these instructions, taking into account the working conditions and the work to be performed.** *Use of the power tool for operations different from those intended could result in a hazardous situation.*

# Battery tool use and care

1. **Recharge only with the charger specified by the manufacturer.** *A charger that is suitable for one type of battery pack may create a risk of fire when used with another battery pack.*
2. **Use power tools only with specifically designated battery packs.** *Use of any other battery packs may create a risk of injury and fire.*
3. **When battery pack is not in use, keep it away from other metal objects, like paper clips, coins, keys, nails, screws or other small metal objects, that can make a connection from one terminal to another.** *Shorting the battery terminals together may cause burns or a fire.*
4. **Under abusive conditions, liquid may be ejected from the battery; avoid contact. If contact accidentally occurs, flush with water. If liquid contacts eyes, additionally seek medical help.** *Liquid ejected from the battery may cause irritation or burns.*

# Service

**Have your power tool serviced by a qualified repair person using only identical replacement parts.**

*This will ensure that the safety of the power tool is maintained.*


## Drain Cleaner Safety Warnings

SAFETY

SETUP

OPERATION

MAINTENANCE

1. Maintain labels and nameplates on the tool. These carry important safety information. If unreadable or missing, contact Harbor Freight Tools for a replacement.
2. To reduce the risk of electrical shock, do not put motor or battery in water or other liquid.
3. Do not wear cloth gloves or loose clothing, or use a rag to grasp the cable to prevent entanglement.
4. Use appropriate personal protective equipment while handling and using Drain Cleaner. Drains may contain chemicals, bacteria and other substances that may be toxic, infectious, cause burns or other issues. Appropriate personal protective equipment always includes ANSI-approved splash-resistant safety glasses under face shield, NIOSH-approved dust mask/respirator, and heavy-duty LEATHER work gloves, and may include equipment such as latex or rubber gloves under LEATHER work gloves, protective clothing, and steel toed footwear.
5. Do not use in pipe containing drain cleaning chemicals.
6. Do not use in pipe obstructed by roots.
7. Wash hands after use. Use hot, soapy water to wash hands and other exposed body parts exposed to drain contents after handling or using Drain Cleaner. Do not eat or smoke while operating or handling Drain Cleaner. This will help prevent contamination with toxic or infectious material.
8. Have your Drain Cleaner serviced by a qualified repair person using only identical replacement parts. This will ensure that the safety of the Drain Cleaner is maintained.
9. Do not put too much stress on Cable. Quickly release tension if it starts to build in the cable. Excess tension will cause the Cable to twist, kink, or break.
10. Reverse Motor direction only when pulling the Cable off an obstruction. Trying to push the Cable down the pipe or pull it out of a pipe while in reverse operation will unravel and break the Cable. Wait for the Drum to stop turning completely before changing the Rotation Switch.
11. Only use Drain Cleaner to clean drains of recommended sizes according to these instructions. Other uses or modifying the Drain Cleaner for other applications may increase the risk of injury.
12. Wash hands after use. Use hot, soapy water to wash hands and other exposed body parts exposed to drain contents after handling or using Drain Cleaner. Do not eat or smoke while operating or handling Drain Cleaner. This will help prevent contamination with toxic or infectious material.
13. Avoid unintentional starting. Prepare to begin work before turning on the tool.
14. Do not lay the tool down until it has come to a complete stop. Moving parts can grab the surface and pull the tool out of your control.
15. When using a handheld power tool, maintain a firm grip on the tool with both hands to resist starting torque.
16. Do not leave the tool unattended when it is plugged into an electrical outlet the Battery Pack is connected. Turn off the tool, and unplug it from its electrical outlet remove the Battery Pack before leaving.
17.  The battery Charger gets hot during use. The Charger's heat can build up to unsafe levels and create a fire hazard if it does not receive adequate ventilation, due to an electrical fault, or if it is used in a hot environment. Do not place the Charger on a flammable surface. Do not obstruct any vents on the Charger. **Especially avoid placing the Charger on carpets and rugs; they are not only flammable, but they also obstruct vents under the Charger.** Place the Charger on a stable, solid, nonflammable surface (such as a stable metal workbench or concrete floor) at least 1 foot away from all flammable objects, such as drapes or walls. Keep a fire extinguisher and a smoke detector in the area. Frequently monitor the Charger and Battery Pack while charging.
18. This product is not a toy. Keep it out of reach of children.
19. People with pacemakers should consult their physician(s) before use. Electromagnetic fields in close proximity to heart pacemaker could cause pacemaker interference or pacemaker failure. In addition, people with pacemakers should:
  - Avoid operating alone.
  - Do not use with Trigger locked on.
  - Properly maintain and inspect to avoid electrical shock.

20. The warnings, precautions, and instructions discussed in this instruction manual cannot cover all possible conditions and situations that may occur. It must be understood by the operator that common sense and caution are factors which cannot be built into this product, but must be supplied by the operator.

## Lithium Battery Safety Warnings



### LITHIUM BATTERIES STORE A LARGE AMOUNT OF ENERGY AND WILL VENT FIRE OR EXPLODE IF MISTREATED:



1. **Keep Battery Pack dry.**
2. **DO NOT DO ANY OF THE FOLLOWING TO THE BATTERY PACK:**
  - a. **Open,**
  - b. **Drop,**
  - c. **Short-circuit,**
  - d. **Puncture,**
  - e. **Incinerate, or**
  - f. **Expose to temperatures greater than 140°F.**
3. Charge Battery Pack only according to its Charger's instructions.
4. Inspect Battery Pack before every use; do not use or charge if damaged.

## Vibration Safety

This tool vibrates during use.

Repeated or long-term exposure to vibration may cause temporary or permanent physical injury, particularly to the hands, arms and shoulders.

To reduce the risk of vibration-related injury:

1. Anyone using vibrating tools regularly or for an extended period should first be examined by a doctor and then have regular medical check-ups to ensure medical problems are not being caused or worsened from use. Pregnant women or people who have impaired blood circulation to the hand, past hand injuries, nervous system disorders, diabetes, or Raynaud's Disease should not use this tool. If you feel any symptoms related to vibration (such as tingling, numbness, and white or blue fingers), seek medical advice as soon as possible.
2. Do not smoke during use. Nicotine reduces the blood supply to the hands and fingers, increasing the risk of vibration-related injury.
3. Wear suitable gloves to reduce the vibration effects on the user.
4. Use tools with the lowest vibration when there is a choice.
5. Include vibration-free periods each day of work.
6. Grip tool as lightly as possible (while still keeping safe control of it). Let the tool do the work.
7. To reduce vibration, maintain the tool as explained in this manual. If any abnormal vibration occurs, stop use immediately.



**SAVE THESE INSTRUCTIONS.**

## Grounding

### **⚠️ WARNING**



**TO PREVENT ELECTRIC SHOCK AND DEATH FROM INCORRECT GROUNDING:**

Check with a qualified electrician if you are in doubt as to whether the outlet is properly grounded. Do not modify the power cord plug provided with the charger. Do not use the charger if the power cord or plug is damaged. If damaged, have it repaired by a service facility before use. If the plug will not fit the outlet, have a proper outlet installed by a qualified electrician.

## Extension Cords

**Note:** Extension cords must not be used with this item's Charger.

## Symbology

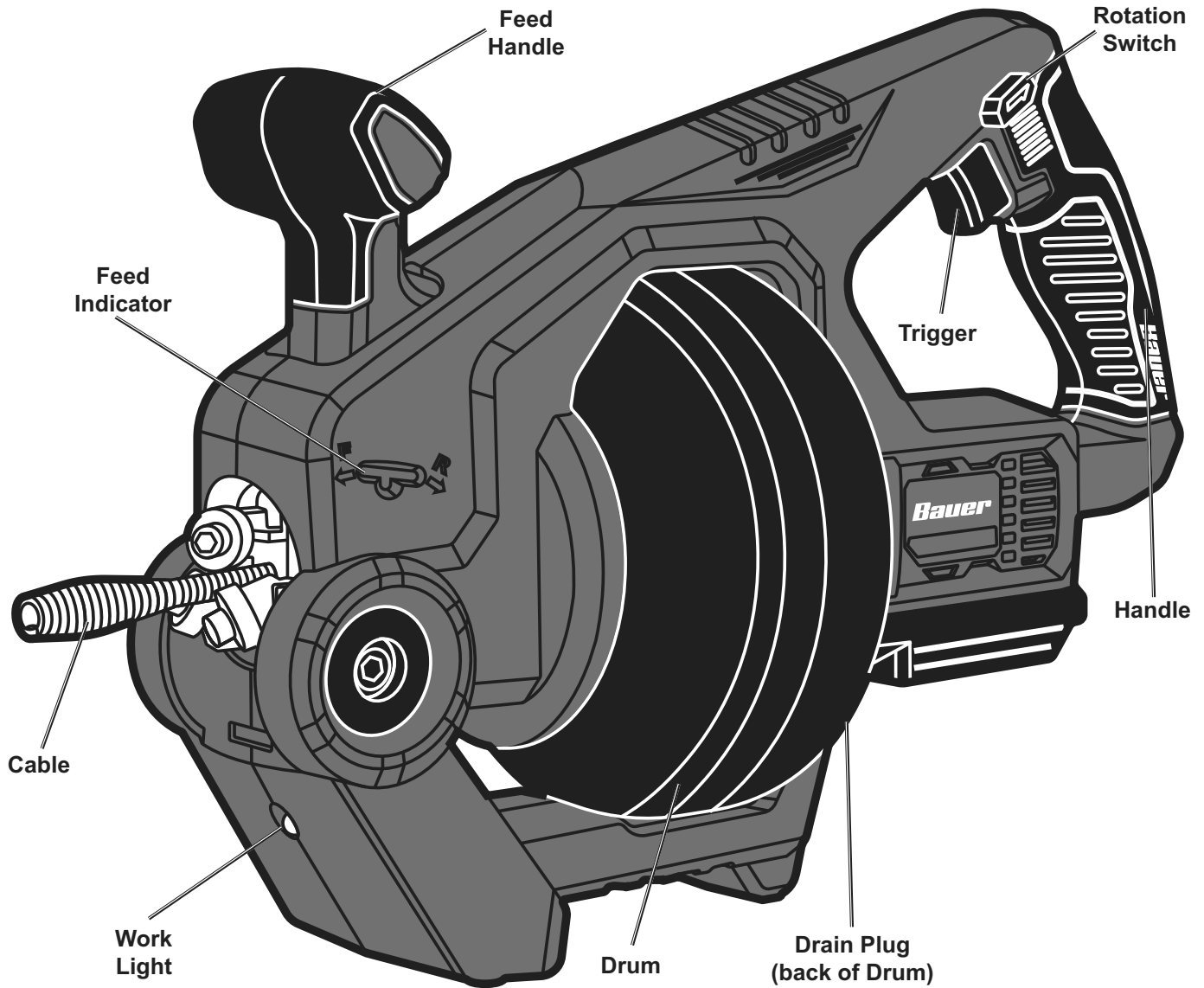
<b>V</b>	Volts		WARNING marking concerning Risk of Fire. Do not cover Charger ventilation ducts. Charge on fireproof surface only.
<b>A</b>	Amperes		WARNING marking concerning Risk of Electric Shock. Properly connect Charger's power cord to appropriate outlet.
n <sub>0</sub> xxxx/min.	No Load Revolutions per Minute (RPM)		WARNING marking concerning Risk of Explosion. Do not puncture, short, or open battery packs and do not charge damaged battery packs.
	WARNING marking concerning Risk of Eye Injury. Wear ANSI-approved safety goggles with side shields.		
	Read the manual before set-up and/or use.		

## Specifications

Battery Type	20V Bauer Li-Ion
Charger Type	20V Bauer Li-Ion
Cable Size	Ø1/4" x 23' L
Drain Pipe Capacity	3/4" to 2"

## Setup - Before Use:

## Functions



SAFETY

SETUP

OPERATION

MAINTENANCE

## Operating Instructions



Read the **ENTIRE IMPORTANT SAFETY INFORMATION** section at the beginning of this manual including all text under subheadings therein before set up or use of this product.

### Tool Set Up

#### **WARNING**

**TO PREVENT SERIOUS INJURY FROM ACCIDENTAL OPERATION:**

Make sure that the Trigger is in the off-position and remove the Battery Pack before performing any procedure in this section.

**TO PREVENT SERIOUS INJURY:**

**DO NOT OPERATE WITH ANY GUARD DISABLED, DAMAGED, OR REMOVED.**



Wear ANSI-approved splash-resistant safety goggles, NIOSH-approved dust mask/respirator under face shield, and heavy-duty LEATHER gloves, and other appropriate protective equipment when setting up the Drain Cleaner. For extra protection from chemicals and bacteria on the appliance and in the work area, wear latex, rubber or other liquid barrier gloves under the heavy-duty LEATHER work gloves. Before use, inspect gloves to be sure they are free of defects or loose sections that could be caught in the Drain Cleaner Cable. Rubber soled, non-slip shoes can help prevent slipping and electric shock, especially on wet surfaces.

**TO PREVENT SERIOUS INJURY FROM ELECTRIC SHOCK, TWISTED/BROKEN CABLES, CHEMICAL BURNS, INFECTIONS AND OTHER CAUSES AND PREVENT DRAIN CLEANER DAMAGE:**

**Before each use, inspect Drain Cleaner and correct any problems.**

1. Inspect the tool for broken, worn, missing, misaligned or binding parts or any other condition which may prevent safe and normal operation.
2. Check the Cable for wear and damage. Replace Cable before use if any section:
  - a. is worn or flattened,
  - b. is kinked more than 15°,
  - c. has spaces between coils (often caused by running motor in reverse or pulling on cable),
  - d. shows signs of corrosion.
3. Install the Drain Plug and make sure it is properly tightened.
4. Make sure that switches and handles move smoothly between positions and lock in place.
5. Check that all warning labels are present, firmly attached and readable.
6. Before use, fully retract the Cable with no more than 2" of Cable outside of the appliance. This will keep the Cable from "whipping" when the appliance is turned on.
7. Clean any oil, grease or dirt from all equipment handles and controls. This helps prevent the appliance or control from slipping during use.



## Work Area Set Up

---

1. Verify that work area has adequate lighting for the job.
2. Make sure work area is free of flammable liquids, vapors or dust that may ignite. Sparks can be generated during Drain Cleaner operation. Do not work in area until these sources of ignition have been identified and corrected.
3. Do not use the appliance while standing in water. If needed, remove the water from the work area.
4. Inspect the drain to be cleaned. If possible, determine the best access point(s) to the drain, the size(s) and length(s) of the drain, distance to tanks or mainlines, the nature of the blockage, presence of drain cleaning chemicals or other chemicals, etc.
5. If there are chemicals present in the drain, read and adhere to the specific safety measures required to work around those chemicals. Contact the chemical manufacturer for required safety instructions and information.
6. If necessary, remove fixture (toilet, sink, etc.) to allow access to the drain. **Do not feed the Cable through a fixture.** This could damage the Drain Cleaner and the fixture.
7. If needed, place protective covers over the work area floor. Cleaning the clogged drain can be a messy operation.
8. To prevent Cable from whipping, place Drain Cleaner within 6 inches of drain line. **The greater the distance from the drain line, the higher the risk of the Cable twisting or kinking.**
9. If needed, set up barriers to keep bystanders away from the Drain Cleaner and work area during operation.

SAFETY

SETUP

OPERATION

MAINTENANCE

# General Operating Instructions

SAFETY

1. Make sure that the Trigger is in the off-position, then attach the Battery Pack.
2. To prevent Cable from whipping, place Drain Cleaner within 6 inches of drain line. This will keep Cable from hazardously “whipping” when activating the Drain Cleaner.
3. **Make sure Rotation Switch is in forward position, with the arrow pointing towards the Cable pressed in.**

**NOTICE:** The backward position of the Rotation Switch must **ONLY** be used momentarily to relieve Cable tension.

If it is used for even just a few seconds in a row, the Cable may be permanently damaged. **LEAVE FEED HANDLE IN NEUTRAL POSITION. While in the backward position, the Cable movement from the Feed Handle would be reversed as well.**

SETUP

4. With the Drain Cleaner off, pull the Cable out of Drum with both gloved hands and feed into the drain. Gradually work the Cable at least 12" into the drain.
5. Squeeze Trigger and press Feed Handle forward to continue feeding Cable into the drain.

OPERATION

6. As you feed Cable, you may feel and see Cable slow down and/or start to wind or load up (a “twisting” or “squirming” motion). This may indicate a change in drain line (such as a drain trap, elbow, etc.), a build up in the drain (mud or grease), or the actual blockage. Continue to slowly feed the Cable until the Cable reaches the blockage.

**WARNING! Do not allow Cable to build up outside drain. This can cause Cable to twist, kink or break.**

7. If the Cable becomes lodged in a narrow part of the drain or in a drain trap, allow the Cable to try and work itself past the obstruction. If Cable still won't pass obstruction, release the Trigger and use sharp downward thrusts to try and pass obstruction. Once Cable is past, squeeze the Trigger and press Feed Handle forward to continue feeding.
8. To retract Cable, **keep Rotation Switch in forward position** and pull Feed Handle backwards.
9. To prevent accidents, turn off the tool, dry your hands, and remove the Battery Pack after use. Clean the Cable (see below), then store the tool indoors out of children's reach.

MAINTENANCE

## **NOTICE**

Rotation Switch controls rotation of drum only. **DO NOT USE ROTATION SWITCH IN BACKWARD (REVERSE) POSITION WHILE REMOVING CABLE FROM DRAIN/PIPE.** Use reverse direction only momentarily for relieving pressure or untangling cable from a blockage.

Warranty void if cable damaged from allowing motor to twist excessively against blockage, or if drum is run in reverse long enough to untwist cable.

## Cleaning the Cable

---

1. Thoroughly flush Drain Cleaner Cable with clean water after every use. Doing so will help prevent the build-up of sediment and any drain cleaning chemicals still in the cable.
2. Once Cable has been flushed, carefully tip the Drain Cleaner forward to empty out any remaining debris.
3. Rotate the Drum until the Drain Plug is visible.
4. Remove the Drain Plug and tilt the Drain Cleaner backward to allow any remaining fluid to drain out of the Drum.
5. Once the Cable is clean and dry, pull the Cable from the Drum.
6. Lubricate with oily rag as you feed Cable back into Drum.

**WARNING! Do not pull a rotating cable.**

SAFETY

SETUP

OPERATION

MAINTENANCE

## Maintenance and Servicing



Procedures not specifically explained in this manual must be performed only by a qualified technician.

### **⚠️ WARNING**

**TO PREVENT SERIOUS INJURY FROM ACCIDENTAL OPERATION:**  
Make sure that the Trigger is in the off-position and remove the Battery Pack before performing any procedure in this section.

**TO PREVENT SERIOUS INJURY FROM TOOL FAILURE:**  
Do not use damaged equipment. If abnormal noise or vibration occurs, have the problem corrected before further use.

## Cleaning, Maintenance, and Lubrication


1. **BEFORE EACH USE**, inspect the general condition of the tool. Check for:
  - leaking, swollen, or cracked battery pack,
  - loose hardware,
  - misalignment or binding of moving parts,
  - cracked or broken parts, and
  - any other condition that may affect its safe operation.
2. **AFTER USE**, wipe external surfaces of the tool with clean cloth. Store indoors out of the reach of children.
3. Disconnect battery pack and store battery pack, charger, and tool in dry, indoor area out of reach of children and away from metal objects (i.e., paperclips, coins) to prevent shorting.

## Installing Replacement Cable

1. **WARNING! Disconnect Battery Pack to prevent accidental operation. Do not use the Motor to extend or retract the Cable for replacement.**
2. Manually pull old Cable (14) out of Drum (38) until connection to Drum Cable (8) is accessible.
3. Remove Cable Screw (13) from Drum Cable. Separate Cable from Drum Cable.
4. Connect new Cable to Drum Cable using Cable Screw and feed Cable back into Drum manually. Do not apply excessive force to Cable.

# Troubleshooting

Problem	Possible Causes	Likely Solutions
Motor shuts off during use.	<ol style="list-style-type: none"> <li>1. The motor may have been shut off by its internal thermal protection switch, or auto reset breaker.</li> <li>2. GFCI breaker tripped.</li> </ol>	<ol style="list-style-type: none"> <li>1. Turn Rotation Switch to <b>OFF</b>. Allow motor to cool off completely before restarting and stay clear of cable when turning motor back on.</li> <li>2. Make sure all electrical components are dry and all insulation is in good repair. Press reset button. If GFCI trips again, have appliance serviced by qualified electrician before further use.</li> </ol>
Cable kinks, twists, or breaks.	<ol style="list-style-type: none"> <li>1. Too much force on the cable.</li> <li>2. Too much space between Drain Cleaner and drainpipe inlet.</li> <li>3. Cable used is wrong size for drain pipe.</li> <li>4. Cable exposed to acid.</li> <li>5. Cable worn out.</li> </ol>	<ol style="list-style-type: none"> <li>1. Do not force cable. Let Drain Cleaner do the work.</li> <li>2. Move Drain Cleaner to within 6 inches of drainpipe inlet.</li> <li>3. Change cable size.</li> <li>4. Clean and oil cable after each use.</li> <li>5. Replace cable.</li> </ol>
Cable tangles in drum.	<ol style="list-style-type: none"> <li>1. Too much force on the cable.</li> <li>2. Motor running in reverse.</li> <li>3. Automatic feed mechanism frozen.</li> </ol>	<ol style="list-style-type: none"> <li>1. Do not force cable. Let Drain Cleaner do the work.</li> <li>2. Retract Cable <b>with the Rotation Switch in the forward position.</b></li> <li>3. Technician should lubricate the automatic feed mechanism bearings.</li> </ol>



**Follow all safety precautions whenever diagnosing or servicing the tool. Disconnect Battery Pack and Charger power supply before service.**

SAFETY

SETUP

OPERATION

MAINTENANCE

## PLEASE READ THE FOLLOWING CAREFULLY

THE MANUFACTURER AND/OR DISTRIBUTOR HAS PROVIDED THE PARTS LIST AND ASSEMBLY DIAGRAM IN THIS MANUAL AS A REFERENCE TOOL ONLY. NEITHER THE MANUFACTURER OR DISTRIBUTOR MAKES ANY REPRESENTATION OR WARRANTY OF ANY KIND TO THE BUYER THAT HE OR SHE IS QUALIFIED TO MAKE ANY REPAIRS TO THE PRODUCT, OR THAT HE OR SHE IS QUALIFIED TO REPLACE ANY PARTS OF THE PRODUCT. IN FACT, THE MANUFACTURER AND/OR DISTRIBUTOR EXPRESSLY STATES THAT ALL REPAIRS AND PARTS REPLACEMENTS SHOULD BE UNDERTAKEN BY CERTIFIED AND LICENSED TECHNICIANS, AND NOT BY THE BUYER. THE BUYER ASSUMES ALL RISK AND LIABILITY ARISING OUT OF HIS OR HER REPAIRS TO THE ORIGINAL PRODUCT OR REPLACEMENT PARTS THERETO, OR ARISING OUT OF HIS OR HER INSTALLATION OF REPLACEMENT PARTS THERETO.

## Parts List and Diagram

### Parts List

Part	Description	Qty
1	Screw M6×60	1
2	Flat Washer 6	1
3	Pressing Plate	1
4	Left Housing	1
5	Feed Indicator	1
6	Left Feed Handle	1
7	Steel Ball Ø5	2
8	Spring	2
9	Pin Ø6×53	1
10	Fixed Bearing Base	1
11	Bearing 606-2RS	6
12	Screw M6×16	6
13	Cable Screw M3×6	1
14	Cable	1
15	Pin M3×10	2
16	Torque Spring	1
17	Spring Washer Ø8×Ø6×15.5	1
18	Mobile Bearing Base	1
19	Right Feed Handle	1
20	Screw ST3.5×14	23
21	Rotation Switch	1
22	Trigger	1
23	Work Light	1
24	Right Housing	1
25	Junction Plate	1

Part	Description	Qty
26	Nut M6	1
27	Motor	1
28	Bearing	1
29	Screw ST2.9×12	4
30	Connector	1
31	Screw M3×5	2
32	Reduction Gearbox	1
33	Connector Head	1
34	Washer	1
35	Screw M5×14	1
36	Protective Cover	1
37	O-ring Ø13×Ø10×1.5	1
38	Drum	1
39	Connect Valve	1
40	Bearing 61808	1
41	Flat Washer 5	3
42	Screw M5×10	3
43	Drum Cable	1
44	Right Port	1
45	Left Port	1
46	Discharge Protection Plate	1
47	Baffle	1
48	Terminal	1
49	Battery Pack (sold separately)	1

SAFETY

SETUP

OPERATION

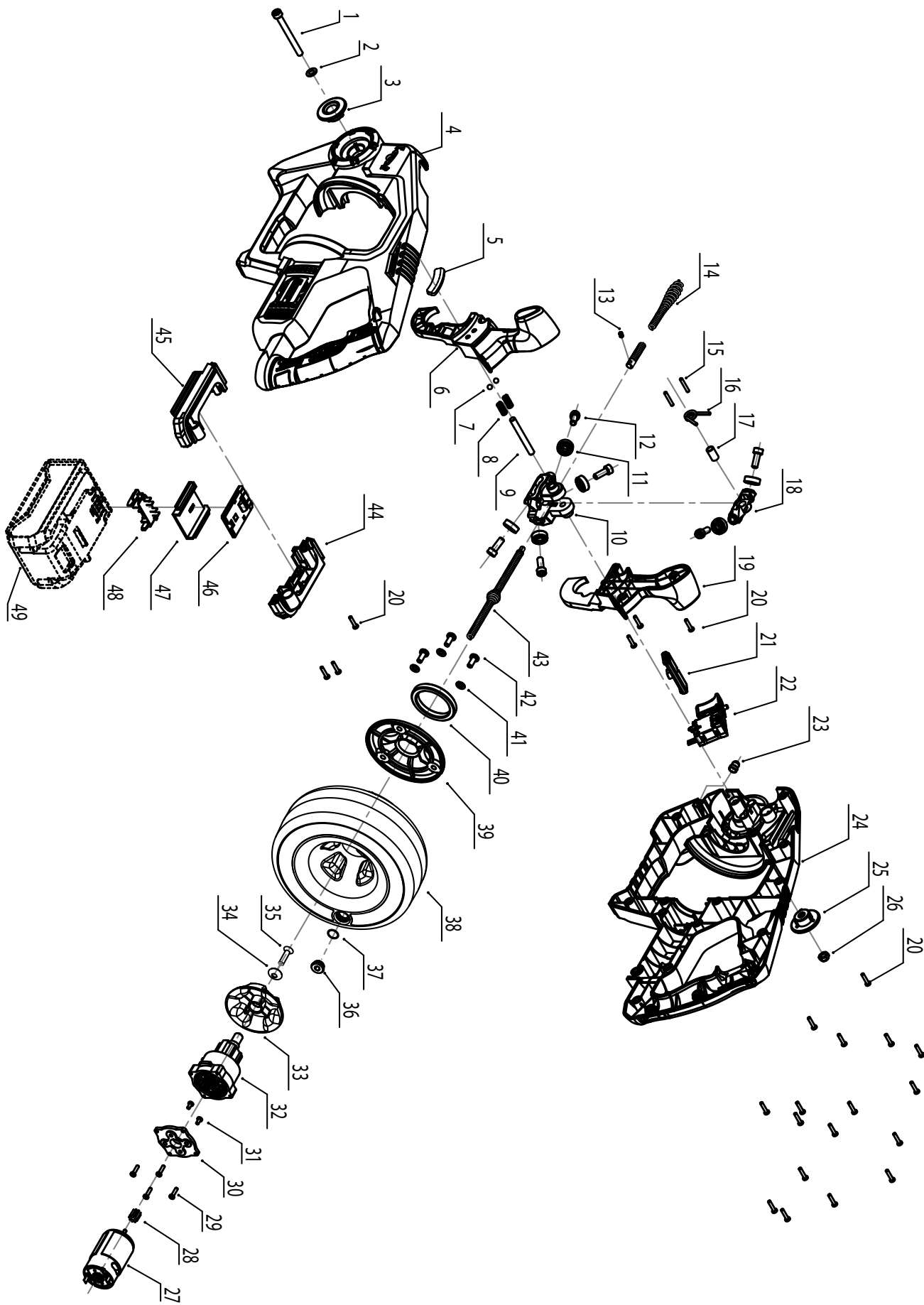
MAINTENANCE

Record Product's Serial Number Here: \_\_\_\_\_

**Note:** If product has no serial number, record month and year of purchase instead.

**Note:** Some parts are listed and shown for illustration purposes only, and are not available individually as replacement parts. Specify UPC 792363644839 when ordering parts.

# Assembly Diagram



## Limited 90 Day Warranty

Harbor Freight Tools Co. makes every effort to assure that its products meet high quality and durability standards, and warrants to the original purchaser that this product is free from defects in materials and workmanship for the period of 90 days from the date of purchase. This warranty does not apply to damage due directly or indirectly, to misuse, abuse, negligence or accidents, repairs or alterations outside our facilities, criminal activity, improper installation, normal wear and tear, or to lack of maintenance. We shall in no event be liable for death, injuries to persons or property, or for incidental, contingent, special or consequential damages arising from the use of our product. Some states do not allow the exclusion or limitation of incidental or consequential damages, so the above limitation of exclusion may not apply to you. THIS WARRANTY IS EXPRESSLY IN LIEU OF ALL OTHER WARRANTIES, EXPRESS OR IMPLIED, INCLUDING THE WARRANTIES OF MERCHANTABILITY AND FITNESS.

To take advantage of this warranty, the product or part must be returned to us with transportation charges prepaid. Proof of purchase date and an explanation of the complaint must accompany the merchandise. If our inspection verifies the defect, we will either repair or replace the product at our election or we may elect to refund the purchase price if we cannot readily and quickly provide you with a replacement. We will return repaired products at our expense, but if we determine there is no defect, or that the defect resulted from causes not within the scope of our warranty, then you must bear the cost of returning the product.

This warranty gives you specific legal rights and you may also have other rights which vary from state to state.

The logo for Bauer, featuring the word "Bauer" in a bold, italicized, sans-serif font. The letters are black with a white outline, and a small trademark symbol (TM) is located at the bottom right of the letter 'r'.

26677 Agoura Road • Calabasas, CA 91302 • 1-888-866-5797