

# Owner's Manual & Safety Instructions

Save This Manual Keep this manual for the safety warnings and precautions, assembly, operating, inspection, maintenance and cleaning procedures. Write the product's serial number in the back of the manual near the assembly diagram (or month and year of purchase if product has no number). Keep this manual and the receipt in a safe and dry place for future reference.

19a

# BRAUN™

## WATERPROOF RECHARGEABLE LED SPOTLIGHT



Visit our website at: <http://www.harborfreight.com>  
Email our technical support at: [productsupport@harborfreight.com](mailto:productsupport@harborfreight.com)

**64757**

When unpacking, make sure that the product is intact and undamaged. If any parts are missing or broken, please call 1-888-866-5797 as soon as possible.

Copyright© 2018 by Harbor Freight Tools®. All rights reserved.

No portion of this manual or any artwork contained herein may be reproduced in any shape or form without the express written consent of Harbor Freight Tools. Diagrams within this manual may not be drawn proportionally. Due to continuing improvements, actual product may differ slightly from the product described herein. Tools required for assembly and service may not be included.

### **⚠WARNING**

Read this material before using this product. Failure to do so can result in serious injury. SAVE THIS MANUAL.

# Table of Contents

|                      |   |                              |   |
|----------------------|---|------------------------------|---|
| Safety .....         | 2 | Maintenance .....            | 6 |
| Specifications ..... | 4 | Parts List and Diagram ..... | 7 |
| Setup .....          | 4 | Warranty .....               | 8 |
| Operation .....      | 5 |                              |   |

## IMPORTANT SAFETY INFORMATION

### GENERAL POWER TOOL SAFETY WARNINGS

#### **⚠ WARNING**

**Read all safety warnings and instructions.**

*Failure to follow the warnings and instructions may result in electric shock, fire and/or serious injury.*

**Save all warnings and instructions for future reference.**

- 1. Do not use the power tool if the switch does not turn it on and off.**  
*Any power tool that cannot be controlled with the switch is dangerous and must be repaired.*
- 2. Turn OFF the Spotlight and set the Lock Switch on before making any adjustments, changing accessories, or storing power tools.**  
*Such preventive safety measures reduce the risk of starting the power tool accidentally.*
- 3. People with pacemakers should consult their physician(s) before use.** Electromagnetic fields in close proximity to heart pacemaker could cause pacemaker interference or pacemaker failure.

### Battery tool use and care

- 1. Recharge only with the adapters specified by the manufacturer.** *An adapter that is suitable for one type of tool may create a risk of fire when used with another tool.*
- 2. Under abusive conditions, liquid may be ejected from the battery; avoid contact. If contact accidentally occurs, flush with water. If liquid contacts eyes, additionally seek medical help.** *Liquid ejected from the battery may cause irritation or burns.*

### Service

**Have your tool serviced by a qualified repair person using only identical replacement parts.**

*This will ensure that the safety of the tool is maintained.*

### Spotlight Safety Warnings

- 1. Maintain labels and nameplates on the tool.** These carry important safety information. If unreadable or missing, contact Harbor Freight Tools for a replacement.
- 2. This product is not a toy.** Keep it out of reach of children.
- 3. The warnings, precautions, and instructions discussed in this instruction manual cannot cover all possible conditions and situations that may occur.** It must be understood by the operator that common sense and caution are factors which cannot be built into this product, but must be supplied by the operator.

# Lithium Battery Safety Warnings



**LITHIUM BATTERIES STORE  
A LARGE AMOUNT OF ENERGY AND  
WILL VENT FIRE OR EXPLODE IF MISTREATED:**









1. **Keep Battery Pack dry.**
2. **DO NOT DO ANY OF THE FOLLOWING TO THE BATTERY PACK:**
  - a. **Open,**
  - b. **Drop,**
  - c. **Short-circuit,**
  - d. **Puncture,**
  - e. **Incinerate, or**
  - f. **Expose to temperatures greater than 140°F.**
3. Charge Battery Pack only according to its Charger's instructions.
4. Inspect Battery Pack before every use; do not use or charge if damaged.
5. **Li-Ion BATTERY MUST BE RECYCLED OR DISPOSED OF PROPERLY.**



**SAVE THESE INSTRUCTIONS.**

## Symbology

|   |   |
|---|---|
|    | Double Insulated  |
| <b>VAC</b>  | Volts Alternating Current   |
| <b>VDC</b>  | Volts Direct Current  |
| <b>A</b>  | Amperes   |
|  | WARNING marking concerning Risk of Eye Injury. Wear ANSI-approved safety goggles with side shields. |
|  | Read the manual before set-up and/or use.   |

|   |  |
|---|--|
|    | WARNING marking concerning Risk of Fire. Do not cover Charger ventilation ducts. Charge on fireproof surface only.                   |
|   | WARNING marking concerning Risk of Electric Shock. Properly connect Charger's power cord to appropriate outlet.                      |
|  | WARNING marking concerning Risk of Explosion. Do not puncture, short, or open battery packs and do not charge damaged battery packs. |

# BRAUN™

## Specifications

|                  |                        |
|------------------|------------------------|
| Battery          | Li-Ion, 3.7V, 2200 mAh |
| Bulb Type        | SMD LED                |
| Charge Time      | 5 Hours                |
| USB Input Rating | 5VDC 500mA             |

## Setup - Before Use

## Functions



# BRAUN™

## Operating Instructions

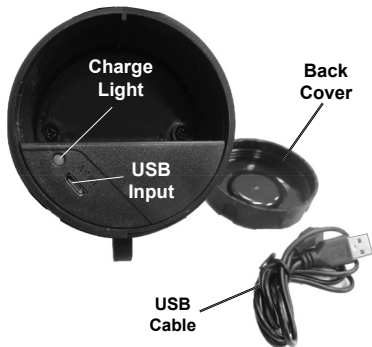


Read the **ENTIRE IMPORTANT SAFETY INFORMATION** section at the beginning of this manual including all text under subheadings therein before set up or use of this product.

## Charging the Battery

**Note:** The Spotlight will NOT operate during charging.

1. Turn the Spotlight OFF.
2. Twist the back cover off the Spotlight by turning it counter clockwise.
3. Under the back cover is a compartment that holds the USB Cable, and is where the USB Input and Battery charge light are located.
4. Attach one end of USB Cable into the Spotlight's USB Input and the other end to a 5VDC 500mA source.
5. The Battery charge light will illuminate red when it is charging.
6. When the charge light turns green, the Battery is fully charged and the Spotlight is ready for use.
7. Disconnect the USB Cable and fold it back into its storage compartment.
8. Reconnect the Spotlight's back cover and twist it on securely.



## General Operating Instructions

1. Hold the Spotlight using the Hand Grip.
2. Set the Lock Switch UP to unlock it and then turn ON the Spotlight by squeezing the Trigger.
3. Select the desired light output using the Trigger: One press for high beam, two presses for low beam, and three presses for flashing beam. The fourth press turns the light OFF.
4. Use the Lock Switch to lock the light on or off. When the Lock Switch is set DOWN, the Trigger is locked in its last setting.
5. The Spotlight can sit on its flat back.
6. The Spotlight's Hanger can be adjusted, extended and positioned as desired or hung on a hook (not included).



7. When finished using the Spotlight, turn it OFF.
8. After use, wipe Spotlight with a clean soft cloth and store indoors out of children's reach.

## Maintenance and Servicing



Procedures not specifically explained in this manual must be performed only by a qualified technician.

### **WARNING**

**TO PREVENT SERIOUS INJURY FROM ACCIDENTAL OPERATION:**

Turn the On/Off Switch of the tool off before performing any inspection, maintenance, or cleaning procedures.

## Cleaning, Maintenance, and Lubrication

- BEFORE EACH USE**, inspect the general condition of the tool. Check for:
  - loose hardware,
  - cracked or broken parts, and
  - any other condition that may affect its safe operation.
- AFTER USE**, wipe external surfaces of the Spotlight with clean cloth.
- Store the Spotlight in a dry, indoor area out of reach of children.

## Battery Disposal

- The Battery is located inside the Spotlight, access from the back.
- Twist the back cover off the Spotlight by turning it counterclockwise.
- Under the back cover is a compartment that holds the USB Cable. The Battery is underneath. Remove the cable to access the two screws at the back of the compartment.
- Remove the two screws.
- Remove the compartment.
- Cut the wires from the Battery and remove it from Spotlight.



- The Li-Ion BATTERY MUST BE RECYCLED OR DISPOSED OF PROPERLY.



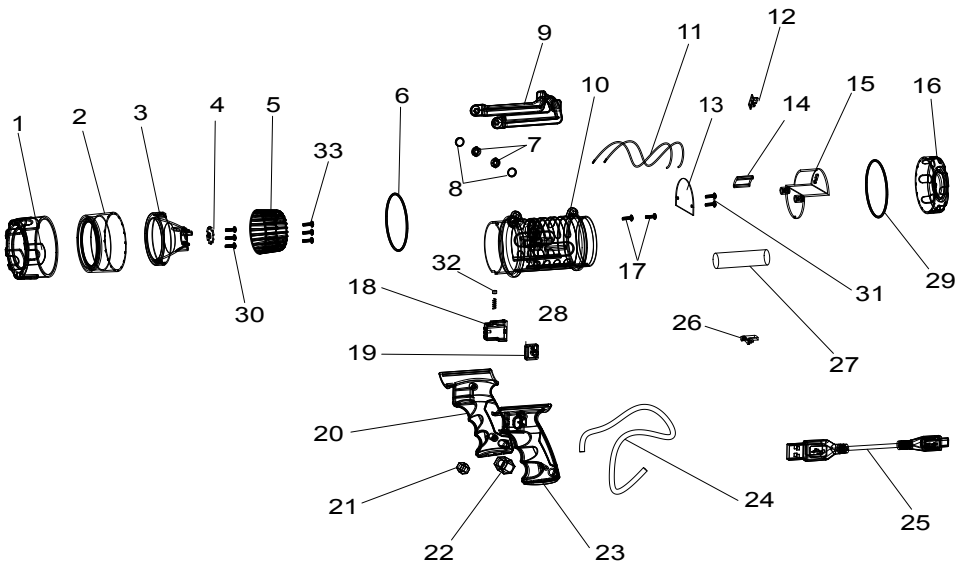
## PLEASE READ THE FOLLOWING CAREFULLY

THE MANUFACTURER AND/OR DISTRIBUTOR HAS PROVIDED THE PARTS LIST AND ASSEMBLY DIAGRAM IN THIS MANUAL AS A REFERENCE TOOL ONLY. NEITHER THE MANUFACTURER OR DISTRIBUTOR MAKES ANY REPRESENTATION OR WARRANTY OF ANY KIND TO THE BUYER THAT HE OR SHE IS QUALIFIED TO MAKE ANY REPAIRS TO THE PRODUCT, OR THAT HE OR SHE IS QUALIFIED TO REPLACE ANY PARTS OF THE PRODUCT. IN FACT, THE MANUFACTURER AND/OR DISTRIBUTOR EXPRESSLY STATES THAT ALL REPAIRS AND PARTS REPLACEMENTS SHOULD BE UNDERTAKEN BY CERTIFIED AND LICENSED TECHNICIANS, AND NOT BY THE BUYER. THE BUYER ASSUMES ALL RISK AND LIABILITY ARISING OUT OF HIS OR HER REPAIRS TO THE ORIGINAL PRODUCT OR REPLACEMENT PARTS THERETO, OR ARISING OUT OF HIS OR HER INSTALLATION OF REPLACEMENT PARTS THERETO.

## Parts List and Diagram

| Part | Description           | Qty |
|------|-----------------------|-----|
| 1    | Lens Cover            | 1   |
| 2    | Lens                  | 1   |
| 3    | Light Bowl            | 1   |
| 4    | SMD LED               | 1   |
| 5    | Light Bowl Housing    | 1   |
| 6    | Seal Ring, Ø 60 x 2.4 | 1   |
| 7    | Gear                  | 2   |
| 8    | O-Ring                | 2   |
| 9    | Hanger                | 1   |
| 10   | Main Housing          | 1   |
| 11   | Internal Wiring       | 1   |
| 12   | USB Bracket           | 1   |
| 13   | PCB                   | 1   |
| 14   | USB PCB               | 1   |
| 15   | Rear Housing          | 1   |
| 16   | Rear Cover            | 1   |
| 17   | Screw, M3 x 8         | 2   |

| Part | Description                    | Qty |
|------|--------------------------------|-----|
| 18   | Trigger                        | 1   |
| 19   | Lock Switch                    | 1   |
| 20   | Hand Grip, Right               | 1   |
| 21   | Insert, Small                  | 1   |
| 22   | Insert, Large                  | 1   |
| 23   | Hand Grip, Left                | 1   |
| 24   | Wrist Strap                    | 1   |
| 25   | USB Cable                      | 1   |
| 26   | Housing                        | 1   |
| 27   | Battery, Li-Ion 3.7V, 2200 mAh | 1   |
| 28   | Spring, Ø 0.7 x 33             | 1   |
| 29   | Seal Ring, Ø 46 x 2.4          | 1   |
| 30   | Screw, M2.5 x 8                | 3   |
| 31   | Screw, M1.8 x 6                | 2   |
| 32   | Magnet                         | 1   |
| 33   | Screw, M2.3 x 8                | 3   |



Record Product's Serial Number Here: \_\_\_\_\_

**Note:** If product has no serial number, record month and year of purchase instead.

**Note:** Some parts are listed and shown for illustration purposes only, and are not available individually as replacement parts.

SAFETY

SETUP

OPERATION

MAINTENANCE

## Limited 90 Day Warranty

Harbor Freight Tools Co. makes every effort to assure that its products meet high quality and durability standards, and warrants to the original purchaser that this product is free from defects in materials and workmanship for the period of 90 days from the date of purchase. This warranty does not apply to damage due directly or indirectly, to misuse, abuse, negligence or accidents, repairs or alterations outside our facilities, criminal activity, improper installation, normal wear and tear, or to lack of maintenance. We shall in no event be liable for death, injuries to persons or property, or for incidental, contingent, special or consequential damages arising from the use of our product. Some states do not allow the exclusion or limitation of incidental or consequential damages, so the above limitation of exclusion may not apply to you. THIS WARRANTY IS EXPRESSLY IN LIEU OF ALL OTHER WARRANTIES, EXPRESS OR IMPLIED, INCLUDING THE WARRANTIES OF MERCHANTABILITY AND FITNESS.

To take advantage of this warranty, the product or part must be returned to us with transportation charges prepaid. Proof of purchase date and an explanation of the complaint must accompany the merchandise. If our inspection verifies the defect, we will either repair or replace the product at our election or we may elect to refund the purchase price if we cannot readily and quickly provide you with a replacement. We will return repaired products at our expense, but if we determine there is no defect, or that the defect resulted from causes not within the scope of our warranty, then you must bear the cost of returning the product.

This warranty gives you specific legal rights and you may also have other rights which vary from state to state.

# **BRAUN™**

26541 Agoura Road • Calabasas, CA 91302 • 1-888-866-5797