

# Owner's Manual & Safety Instructions

**Save This Manual** Keep this manual for the safety warnings and precautions, assembly, operating, inspection, maintenance and cleaning procedures. Write the product's serial number in the back of the manual near the assembly diagram (or month and year of purchase if product has no number). Keep this manual and the receipt in a safe and dry place for future reference.

23h

# **HAULMASTER**

## **600 LB CAPACITY 10 CUBIC FT. HEAVY DUTY TRAILER CART**



Visit our website at: <http://www.harborfreight.com>  
Email our technical support at: [productsupport@harborfreight.com](mailto:productsupport@harborfreight.com)

64831

When unpacking, make sure that the product is intact and undamaged. If any parts are missing or broken, please call 1-888-866-5797 as soon as possible.

Copyright© 2018 by Harbor Freight Tools®. All rights reserved.

No portion of this manual or any artwork contained herein may be reproduced in any shape or form without the express written consent of Harbor Freight Tools. Diagrams within this manual may not be drawn proportionally. Due to continuing improvements, actual product may differ slightly from the product described herein. Tools required for assembly and service may not be included.

### **⚠ WARNING**

Read this material before using this product. Failure to do so can result in serious injury.  
**SAVE THIS MANUAL.**

# Table of Contents

Safety .....	3	Inspection .....	12
Specifications .....	6	Parts List and Diagram .....	14
Installation .....	6	Warranty .....	16
Operation .....	10		



## WARNING SYMBOLS AND DEFINITIONS

	This is the safety alert symbol. It is used to alert you to potential personal injury hazards. Obey all safety messages that follow this symbol to avoid possible injury or death.
	Indicates a hazardous situation which, if not avoided, will result in death or serious injury.
	Indicates a hazardous situation which, if not avoided, could result in death or serious injury.
	Indicates a hazardous situation which, if not avoided, could result in minor or moderate injury.
	Addresses practices not related to personal injury.

	Volts Direct Current
	Amperes
	WARNING marking concerning Risk of Eye Injury. Wear ANSI-approved safety goggles with side shields.

	Read the manual before set-up and/or use.
	WARNING marking concerning Risk of Fire. Connect trailer wiring to properly fused circuit only.

# IMPORTANT SAFETY INFORMATION

## ⚠️WARNING

**Read all safety warnings and instructions.**

*Failure to follow the warnings and instructions may result in serious injury.*

**Save all warnings and instructions for future reference.**

**DANGER! TO PREVENT SERIOUS INJURY AND/OR DEATH, ATTACH A SAFETY CHAIN AND PROPERLY SECURE HITCH BEFORE LOADING OR TOWING.**

**WARNING! TO PREVENT SERIOUS INJURY AND/OR DEATH, DO NOT EXCEED MAXIMUM PAYLOAD CAPACITY OF 600 LB OR 5 MPH MAXIMUM SPEED.**

The warnings, precautions, and instructions discussed in this instruction manual cannot cover all possible conditions and situations that may occur. It must be understood by the operator that common sense and caution are factors which cannot be built into this product, but must be supplied by the operator.

## Assembly Safety

1. Keep work area clean and dry. Cluttered, damp, or wet work areas invite injuries.
2. Keep children away from work area.
3. Wear ANSI-approved safety impact eye goggles and heavy-duty work gloves when assembling this Trailer.
4. Do not modify this Trailer, and do not use this Trailer for a purpose for which it was not intended. Do not use for aircraft purposes.

## Connection Safety

1. Dress safely while connecting/disconnecting. Do not wear loose clothing or jewelry, as they can become caught in moving parts. Wear a protective hair covering to prevent long hair from becoming caught in moving parts. If wearing a long-sleeve shirt, roll sleeves up above elbows. Wearing safety work shoes is recommended.
2. Do not setup or use this Trailer if under the influence of alcohol or drugs. Read warning labels on prescriptions to determine if your judgement or reflexes are impaired while taking drugs. If there is any doubt, do not attempt to use this Trailer.
3. Stay alert. Watch what you are doing at all times. Use common sense. Do not setup or use this Trailer when you are tired or distracted from the job at hand.
4. Make sure the Trailer's Hitch Pin (25) and the vehicle's hitch (not included) are of equal mating size and are rated equal to or greater than the weight of the Trailer and its payload.
5. Before each use, attach the Trailer's Hitch (9) to the towing vehicle.

## Loading Safety

1. Do not exceed the Trailer's maximum payload capacity of 600 lb (properly distributed).
2. Properly and safely secure the payload in the Trailer. Load the Trailer evenly from side to side with 60% of the load forward of the Wheel Axle Support (4).
3. Make sure the towing vehicle and its hitch are both rated to safely tow the Trailer and its payload. The towing capacity of the hitch is typically stamped on the hitch drawbar.
4. Keep Tailgate (17) in locked position while driving. Do not drive with Tailgate unlocked or open.
5. Pinch hazard; use care when unlatching Trailer and handing the Tailgate (17). Keep hands and fingers away from Latch (8) and Tailgate edges.

# Operation Safety

---

1. This Trailer is not a toy.  
Do not allow children to play on or near this item.
2. Never allow anyone to ride in or on the trailer.
3. Do not transport animals in this trailer.

## Before Each Use

---

1. Check Tire condition and air pressure.
2. Make sure Hitch, coupler, drawbar, and other equipment that connect the trailer and the tow vehicle are properly secured and adjusted.
3. Check that all items are securely fastened on and in the Trailer.
4. Be sure the Trailer jack, tongue support, and any attached stabilizers are raised and locked in place.
5. Check load distribution to make sure the tow vehicle and trailer are properly balanced front to back and side to side.
6. Check side- and rear-view mirrors to make sure you have good visibility.
7. Make sure you have wheel chocks and jack stands.
8. Check trailer for loose bolts and nuts, structural cracks and bends, and any other condition that may affect its safe operation.  
Do not use the Trailer even if minor damage appears.

## General Handling

---

1. Use the driving gear that the towing vehicle manufacturer recommends for towing.
2. Drive at low speeds. This will place less strain on your tow vehicle and trailer. Trailer instability (sway) is more likely to occur as speed increases. **Do not exceed 5 miles per hour when towing the Trailer.**
3. Avoid sudden stops and starts that can cause skidding, sliding, or jackknifing.
4. Avoid sudden steering maneuvers that might create sway or undue side force on the trailer.
5. Slow down when traveling over bumpy roads, railroad crossings, and ditches.
6. Make wider turns at curves and corners. Because your trailer's wheels are closer to the inside of a turn than the wheels of your tow vehicle, they are more likely to hit or ride up over curbs.

## Braking

---

1. Allow considerably more distance for stopping.
2. Always anticipate the need to slow down. To reduce speed, shift to a lower gear and press the brakes lightly.

## Backing Up

---

1. Back up slowly.
2. Because mirrors cannot provide all of the visibility you may need when backing up, have someone outside at the rear of the trailer to guide you whenever possible.
3. Use slight movements of the steering wheel to adjust direction. Exaggerated movements will cause greater movement of the trailer.
4. If you have difficulty, pull forward and realign the tow vehicle and trailer and start again.

## Parking

---

1. Do not park on grades.
2. If possible, have someone outside to guide you as you park.
3. **Once stopped, but before shifting into Park:**
  - a. Have someone place blocks on both sides of the trailer wheels.
  - b. Apply the parking brake.
  - c. Shift into Park.  
(first or reverse gear for manual transmissions).
  - d. Then remove your foot from the brake pedal.

Following this parking sequence is important to make sure your vehicle does not become locked in Park because of extra load on the transmission.
4. **Before uncoupling a trailer:**
  - a. Place blocks at the front and rear of the trailer tires to ensure that the trailer does not roll away when the coupling is released.
  - b. An unbalanced load may cause the tongue to suddenly rotate upward; therefore, before uncoupling, place jack stands under the rear of the trailer to prevent injury.

## Maintenance Safety

---

1. Maintain labels and nameplates on the trailer. These carry important information. If unreadable or missing, contact Harbor Freight Tools for a replacement.
2. Replacement parts and accessories: when servicing, use only identical replacement parts. Only use accessories intended for use with this Trailer. Approved accessories are available from Harbor Freight Tools.
3. Maintain this Trailer with care. Keep this Trailer clean and dry for better and safer performance.
4. For your safety, service and maintenance should be performed regularly by a qualified technician.
5. When not in use, store Trailer in a dry location to inhibit rust. Lock up Trailer, and keep out of reach of children.

 **SAVE THESE INSTRUCTIONS.**

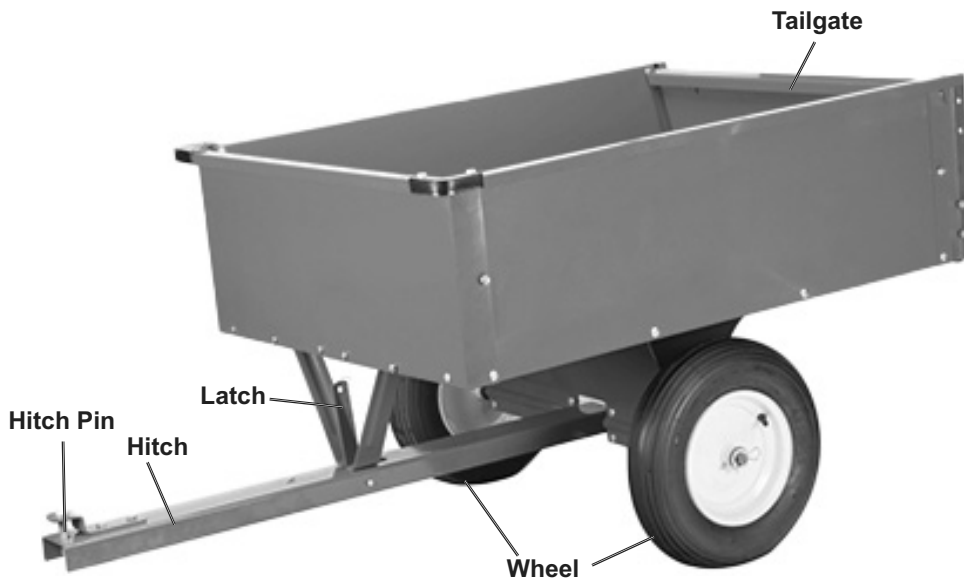
***HAULMASTER***

## Specifications

Rated Capacity	600 lb
Hitch Pin Hole Size	1/2" (14mm)
Tire Pressure	30 PSI

## Assembly

## Functions



## Assembly Instructions



Read the **ENTIRE IMPORTANT SAFETY INFORMATION** section at the beginning of this manual including all text under subheadings therein before set up or use of this product.

**IMPORTANT:** Do not tighten any fasteners until instructed to do so.

**Note:** For additional information regarding the parts listed in the following pages, refer to *Parts List and Diagram* on page 14.

1. Before starting, gather all the bolts and organize them into three piles: Rounded Bolts (18), Long Rounded Bolts (19), and Hex Bolts (22).
  - a. The M8 x 15 Rounded Bolts will be used in most steps.
  - b. The two M8 x 20 Long Rounded Bolts will be used in step 4.
  - c. The Hex Bolts will be used in steps 6C and 11A.
2. Assemble on a flat, level, hard and smooth surface.
3. Attach the two Bottom Panels (1) together and add the Front Cross Brace (2). See Figure A.
  - a. Attach the two Bottom Panels together using four sets of Rounded Bolts (18), Flat Washers (29), Lock Washers (20), and Nuts (21). Finger tighten.
  - b. Attach Front Cross Brace to the Bottom Panels using four sets of Rounded Bolts, Flat Washers, Lock Washers, and Nuts. Finger tighten.

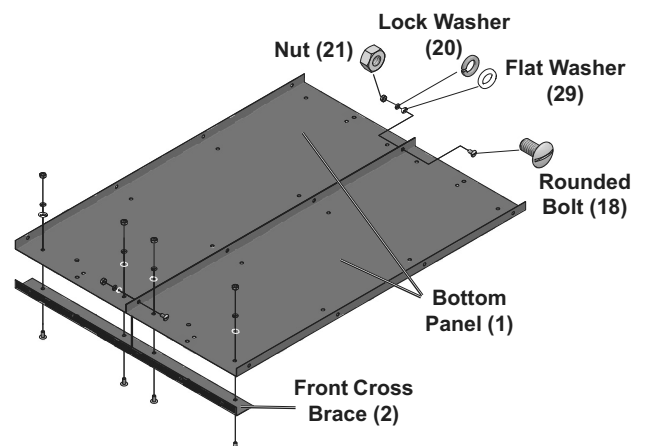


Figure A

4. Attach Hitch Support (3) to Bottom Panel (1) using two sets of Long Rounded Bolts (19), Flat Washers (29), Lock Washers (20), and Nuts (21). Tighten securely.

Turn so that notch in Hitch Support faces the front of the Cart. See Figure B.

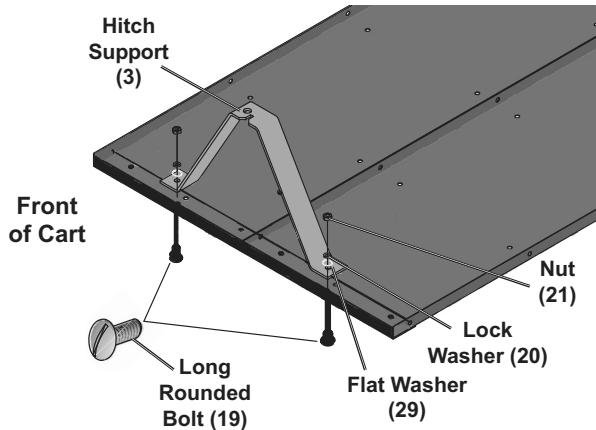


Figure B

5. Attach the two Wheel Axle Supports (4) to the Bottom Panel using eight sets of Rounded Bolts, Flat Washers, Lock Washers, and Nuts. Finger Tighten. See Figure C.

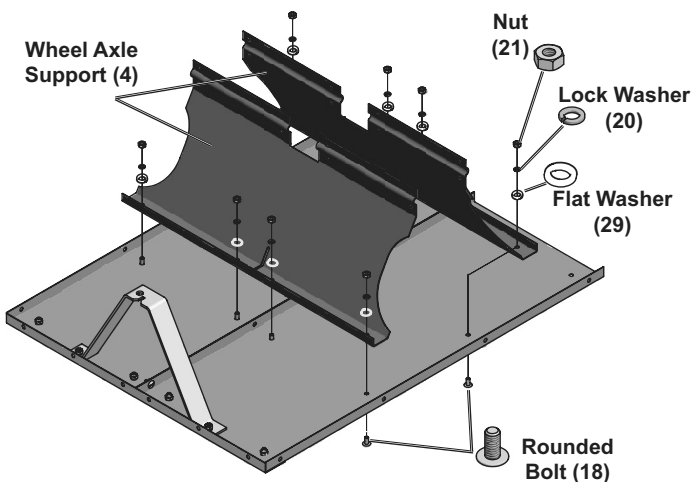


Figure C

6. Attach Hitch (9) to Wheel Axle (5) and Wheel Axle Support (4). See Figure D.
  - a. Align the Hitch so that its two large side holes line up with the channel in the Wheel Axle Support.

**Note:** Ensure that the Wheel Axle is even on both ends.

- b. Hold the Hitch in place while sliding the Wheel Axle through the Wheel Axle Support channel and Hitch holes.
- c. Connect the two Wheel Axle Supports together using eight sets of Hex Bolts (22), Flat Washers (29), Lock Washers (20), and Nuts (21). Tighten securely.

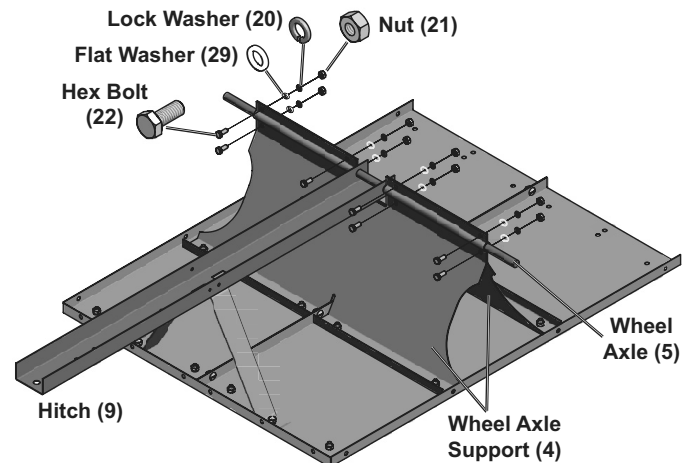


Figure D

7. Go back and tighten all fasteners securely.
8. Attach Hitch (9) to Hitch Support (3) by feeding the Hitch's pin (located on the underside of the Hitch) through the Hitch Support hole and secure with R-Pin (24). See Figure E.

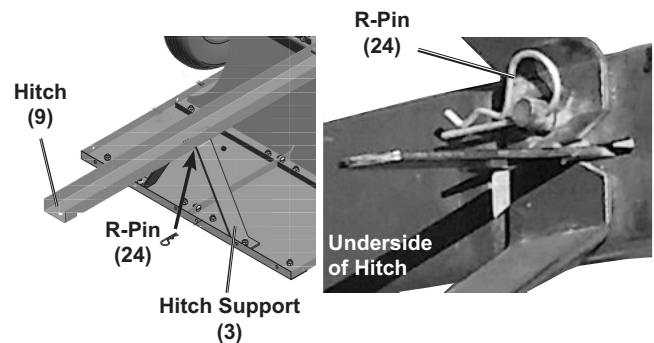


Figure E

9. Attach Wheels (6). See Figure F.
  - a. Put a Flat Washer (23) on the Wheel Axle (5) and slide a Wheel on.
  - b. Add a second Flat Washer (23) and R-Pin (24).
  - c. Repeat for the other Wheel.

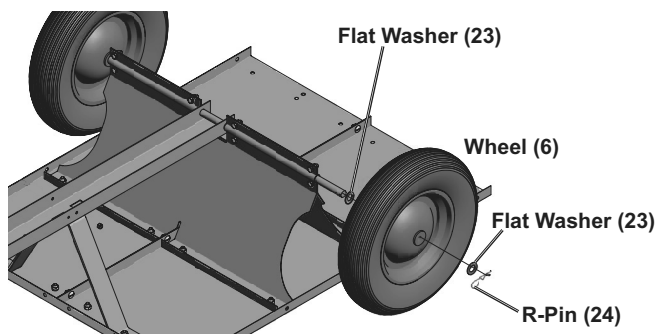


Figure F

10. Flip Cart over and attach Rear Cross Brace (11) and Rear Corner Brackets (12). See Figure G.
  - a. Connect the Rear Cross Brace to the Bottom Panel using six sets of Rounded Bolts, Flat Washers, Lock Washers, and Nuts.
  - b. Attach the two Rear Corner Brackets, one to each Rear Cross Brace corner, using four sets of Rounded Bolts, Flat Washers, Lock Washers, and Nuts each. Tighten all connections.

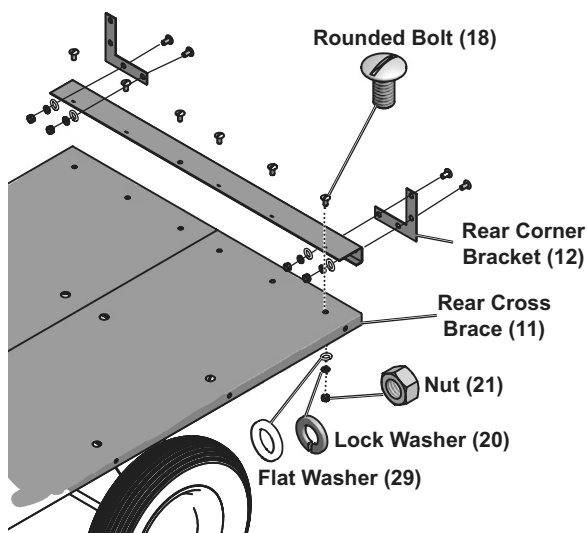


Figure G

11. Attach Side Panels (13). See Figure H.
  - a. Connect one Side Panel to the Bottom Panel using two sets of Rounded Bolts, Flat Washers, Lock Washers, and Nuts. Only secure the two center holes at this time, as shown in Figure H.
  - b. Repeat to connect the other Side Panel to the Bottom Panel and tighten connections.

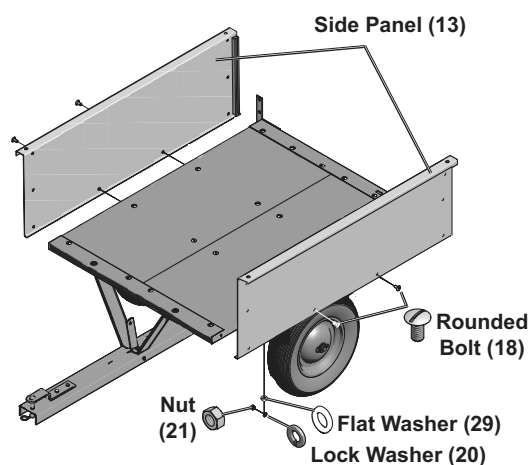


Figure H

12. Attach Rear Corner Brace (14). See Figure I.
  - a. Connect a Rear Corner Brace to a corner on the Side Panel using five sets of Rounded Bolts, Flat Washers, Lock Washers, and Nuts.
  - b. Repeat for the other corner and tighten connections.

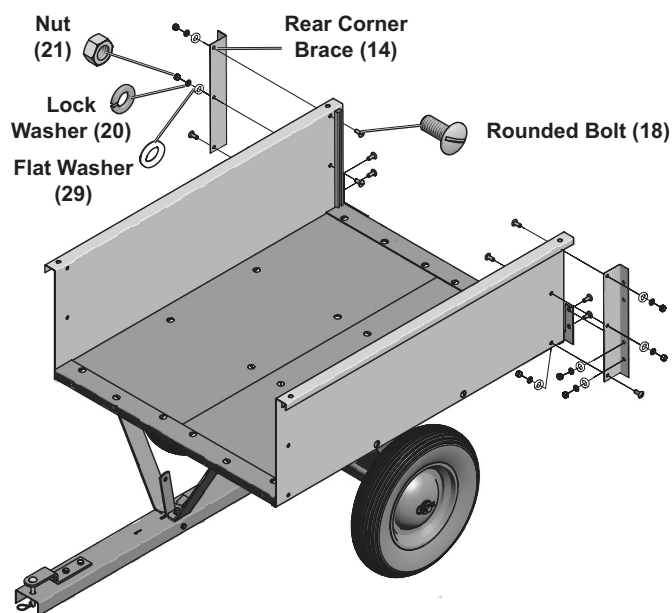


Figure I



13. Attach Front Panel (15). See Figure J.

- Connect the Front Panel to the Bottom Panel using six sets of Rounded Bolts, Flat Washers, Lock Washers, and Nuts.
- Connect Front Panel to Side Panels using six sets of Rounded Bolts, Flat Washers, Lock Washers, and Nuts. Tighten connections.

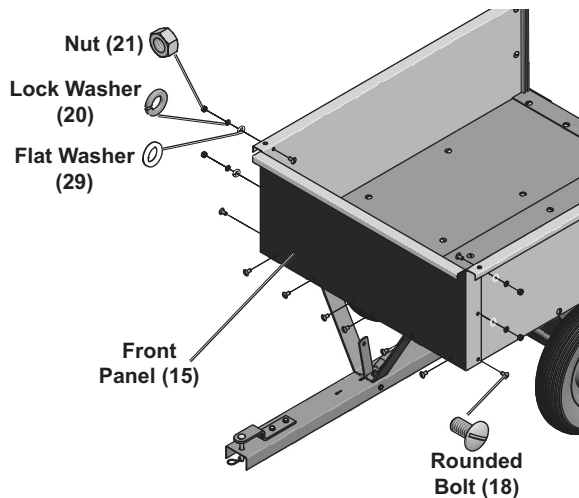


Figure J

14. Attach Front Corner Brace (16). See Figure K.

- Connect one Front Corner Brace (16) to one corner of Front Panel using two sets of Rounded Bolts, Flat Washers, Lock Washers, and Nuts.
- Repeat for the other corner and tighten connections.

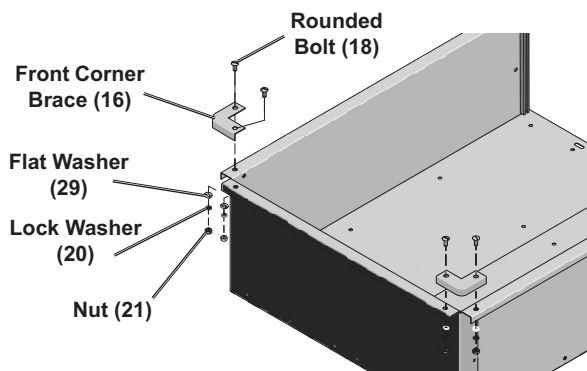


Figure K

15. Attach Tailgate (17). See Figure L.

- Slide Tailgate through the side slots on the back of the Side Panels.
- Guide the Tailgate down until it seats in place into the Bottom Panel.

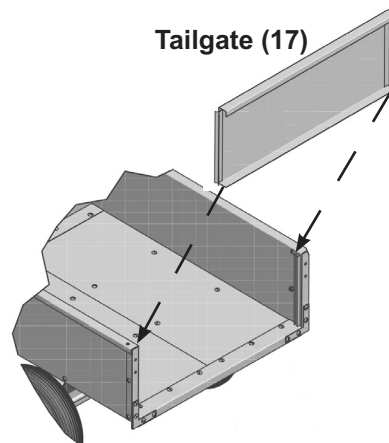


Figure L

16. Go back and tighten all connections securely.

## Operating Instructions



Procedures not specifically explained in this manual must be performed only by a qualified technician.

### **!WARNING**

#### **TO PREVENT SERIOUS INJURY:**

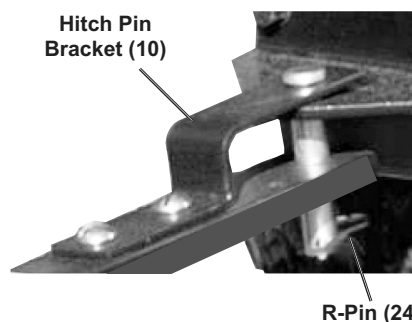
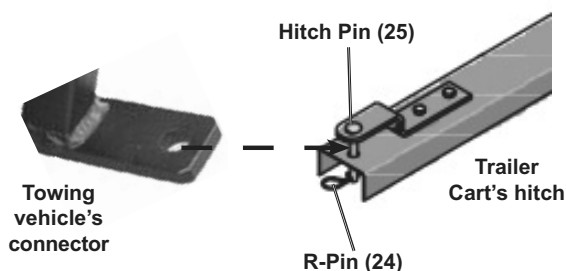
Remove any load before performing any inspection, maintenance, or cleaning procedures.

#### **TO PREVENT SERIOUS INJURY FROM TOOL FAILURE:**

Do not use damaged equipment. If abnormal noise or vibration occurs, have the problem corrected before further use.

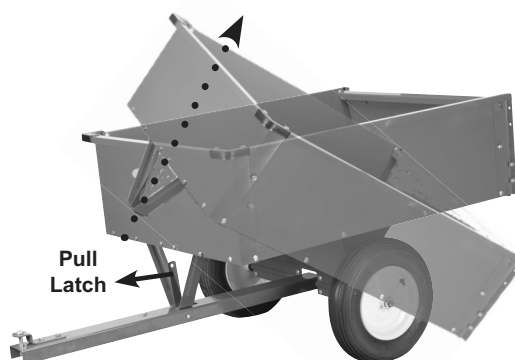
## Attaching the Trailer Cart to Towing Vehicle

1. Trailer Cart should be on a level surface with wheels locked in place (such as using a brick behind and in front of each wheel).
2. The towing vehicle should be turned off, braked and backed in front of the Trailer Cart's hitch.
3. Remove the Trailer Cart's Hitch Pin (25) from the Hitch Pin Bracket (10).
4. Join the Cart's hitch to the towing vehicle by lining up the Hitch Pin Bracket (10) with the hole in the connector on the vehicle.
5. Connect the Hitch Pin so that it passes through the vehicle's connector and Trailer Cart's hitch.
6. Connect the R-Pin (24) to the bottom of Hitch Pin securing it in place.



## Tilting the Trailer Cart for Unloading

1. Trailer Cart should be on a level surface and attached to the towing vehicle which should be turned off and braked.
2. To dump a load, clear an area behind the Trailer Cart.
3. Remove the Tailgate (17).
4. Grasp the Latch (8) and pull it towards the Hitch Pin. The Cart should unlock from the Hitch allowing the Cart to tilt. Tilt the front up so the load falls from the back of the Cart.

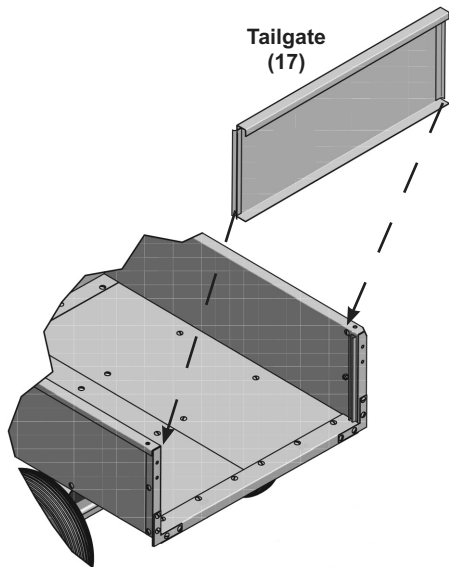


5. If necessary, use a rake or similar tool to empty the load from the Cart.
6. Once load is emptied, push the front of the Cart down onto the Hitch until it locks in place.
7. Reattach the Tailgate.

## Tailgate Removal/Installation

---

1. Trailer Cart should be on a level surface with wheels locked in place (such as using a brick behind and in front of each wheel).  
The towing vehicle should be turned off and braked.

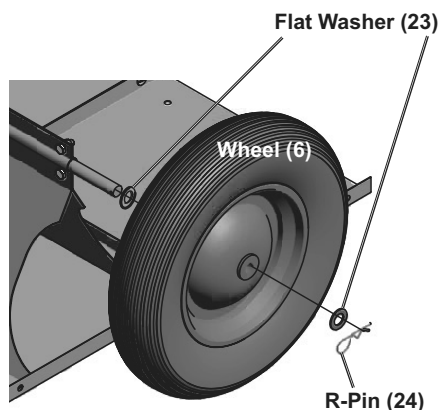


2. To **remove Tailgate**, slide it up through the side slots on the back of the Side Panels.
3. To **reinstall Tailgate**, slide it down the side slots of the Side Panels. Then, guide it down to the Bottom Panel until it seats in place.

## Servicing the Wheels (Tires)

---

1. Regularly check that tire pressure is **30 PSI**.  
When necessary, use hand pump to inflate tires to correct pressure.
2. To **change a Wheel**:
  - a. Trailer Cart should be on a level surface and not connected to a towing vehicle.
  - b. Secure wheels so Trailer Cart does not move (such as placing a brick behind and in front the good wheel).
  - c. Remove R-Pin (24) and Flat Washer (23) from Wheel (6) to be changed. Save both parts.
  - d. Remove Wheel but keep the Flat Washer behind the Wheel attached to the Wheel Axle.
  - e. Replace Wheel with one of similar size.
  - f. Check that the Flat Washer is on the Wheel Axle and then slide the new Wheel on.
  - g. Slide on the saved Flat Washer and connect the saved R-Pin to secure Wheel in place.
  - h. Check tire pressure and, if necessary, inflate using a hand pump.
  - i. Recycle old tire.



## Inspection, Maintenance, and Cleaning



Procedures not specifically explained in this manual must be performed only by a qualified technician.

### **⚠️ WARNING**

#### **TO PREVENT SERIOUS INJURY:**

Remove any load before performing any inspection, maintenance, or cleaning procedures.

#### **TO PREVENT SERIOUS INJURY FROM TOOL FAILURE:**

Do not use damaged equipment. If abnormal noise or vibration occurs, have the problem corrected before further use.

## Inspection

Perform the procedures in this section **BEFORE INITIAL USE** and **AT LEAST MONTHLY**. Inspection is needed more often for heavily used hoists.

1. Check operating mechanisms for proper operation, proper adjustment, and unusual sounds such as, but not limited to, binding noise or and bearing squeal.

2. Check wheels/tires for wear and proper inflation.
3. Verify the Latch is in good working order and releases/locks the Trailer Cart in place.

**⚠️ WARNING!** **TO PREVENT SERIOUS INJURY FROM HOIST FAILURE:** Do not use damaged equipment. If any defect or damage is noted, have the problem corrected before further use.

## Cleaning and Maintenance

---

1. Repair or replacement of Trailer Cart components must be performed only by a qualified technician using only identical replacement parts with the same rating.
2. Note the following regarding specific components:
  - a. Replace damaged or worn hooks. and springs. Do not repair them by welding or reshaping.
  - b. Replace worn wheels/tires.
  - c. Replace or repair all critical parts that are cracked, broken, bent, excessively worn, or missing.
  - d. Replace missing or illegible warning labels.
3. Clean Trailer Cart using a damp clean cloth then dry thoroughly.
4. Lubricate all moving parts regularly using grease.
5. Store Trailer Cart in an indoor dry area out reach of children.

SAFETY

INSTALLATION

OPERATION

INSPECTION

## PLEASE READ THE FOLLOWING CAREFULLY

THE MANUFACTURER AND/OR DISTRIBUTOR HAS PROVIDED THE PARTS LIST AND ASSEMBLY DIAGRAM IN THIS MANUAL AS A REFERENCE TOOL ONLY. NEITHER THE MANUFACTURER OR DISTRIBUTOR MAKES ANY REPRESENTATION OR WARRANTY OF ANY KIND TO THE BUYER THAT HE OR SHE IS QUALIFIED TO MAKE ANY REPAIRS TO THE PRODUCT, OR THAT HE OR SHE IS QUALIFIED TO REPLACE ANY PARTS OF THE PRODUCT. IN FACT, THE MANUFACTURER AND/OR DISTRIBUTOR EXPRESSLY STATES THAT ALL REPAIRS AND PARTS REPLACEMENTS SHOULD BE UNDERTAKEN BY CERTIFIED AND LICENSED TECHNICIANS, AND NOT BY THE BUYER. THE BUYER ASSUMES ALL RISK AND LIABILITY ARISING OUT OF HIS OR HER REPAIRS TO THE ORIGINAL PRODUCT OR REPLACEMENT PARTS THERETO, OR ARISING OUT OF HIS OR HER INSTALLATION OF REPLACEMENT PARTS THERETO.

### Parts List

Part	Description	Qty
1	Bottom Panel	2
2	Front Cross Brace	1
3	Hitch Support	1
4	Wheel Axle Support	2
5	Wheel Axle	1
6	Wheel	2
7	Spring	1
8	Latch	1
9	Hitch	1
10	Hitch Pin Bracket	1
11	Rear Cross Brace	1
12	Rear Corner Bracket	2
13	Side Panel	2
14	Rear Corner Brace	2
15	Front Panel	1

Part	Description	Qty
16	Front Corner Brace	2
17	Tailgate	1
18	Rounded Bolt, M8 x 15	56
19	Long Rounded Bolt, M8 x 20	2
20	Lock Washer, 8mm	68
21	Nut, 8mm	68
22	Hex Bolt, M8 x 20	10
23	Flat Washer, 16mm	4
24	R-Pin, 3mm	4
25	Hitch Pin, 12 x 55mm	1
26	Latch Bolt, M10 x 95	1
27	Latch Lock Nut, 10mm	1
28	Spacer	2
29	Flat Washer, 8mm	68

**Record Product's Serial Number Here:** \_\_\_\_\_

**Note:** If product has no serial number, record month and year of purchase instead.

**Note:** Some parts are listed and shown for illustration purposes only, and are not available individually as replacement parts. Specify UPC 193175506412 when ordering parts.

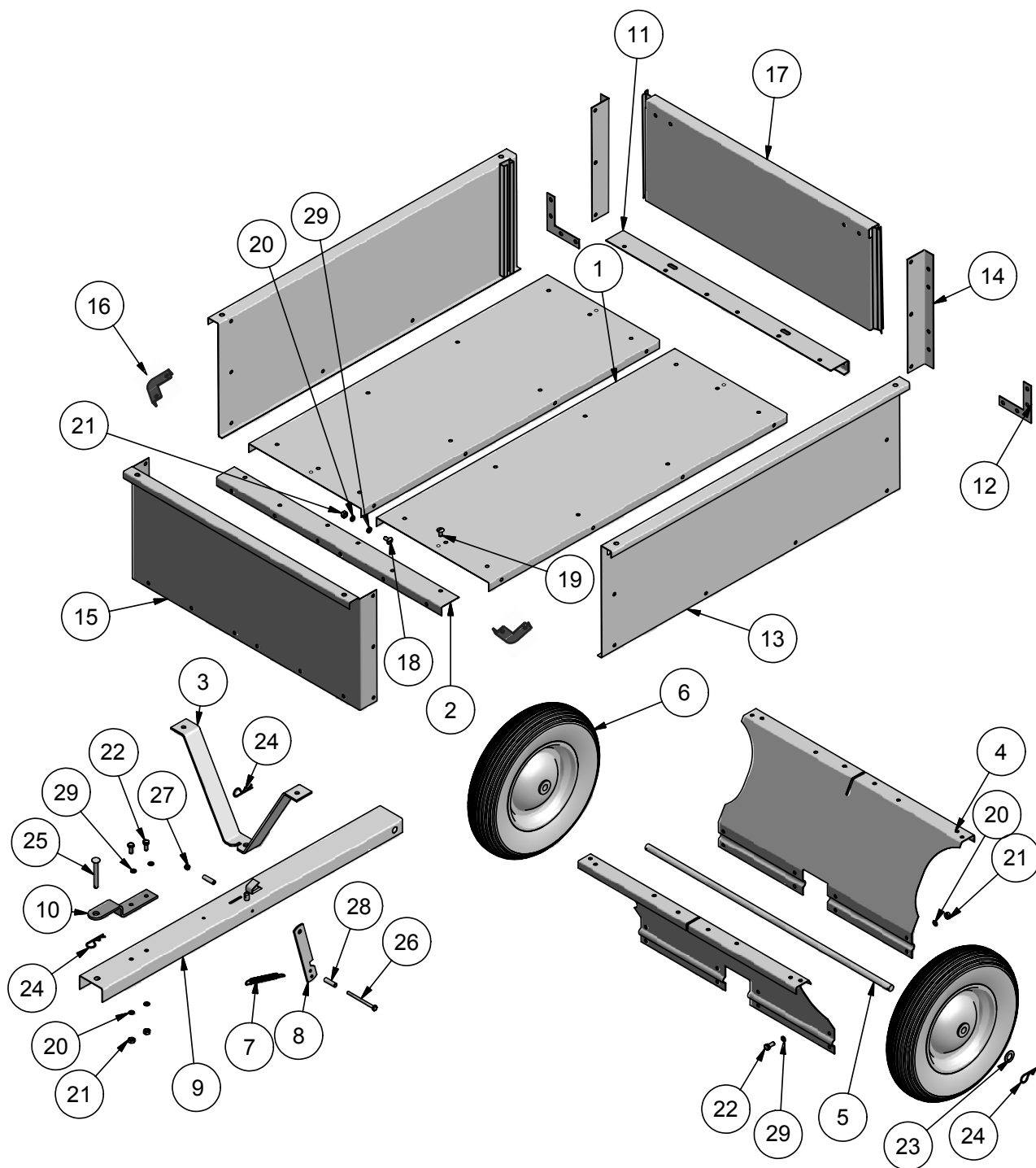
# Assembly Diagram

SAFETY

INSTALLATION

OPERATION

INSPECTION



## Limited 90 Day Warranty

Harbor Freight Tools Co. makes every effort to assure that its products meet high quality and durability standards, and warrants to the original purchaser that this product is free from defects in materials and workmanship for the period of 90 days from the date of purchase. This warranty does not apply to damage due directly or indirectly, to misuse, abuse, negligence or accidents, repairs or alterations outside our facilities, criminal activity, improper installation, normal wear and tear, or to lack of maintenance. We shall in no event be liable for death, injuries to persons or property, or for incidental, contingent, special or consequential damages arising from the use of our product. Some states do not allow the exclusion or limitation of incidental or consequential damages, so the above limitation of exclusion may not apply to you. THIS WARRANTY IS EXPRESSLY IN LIEU OF ALL OTHER WARRANTIES, EXPRESS OR IMPLIED, INCLUDING THE WARRANTIES OF MERCHANTABILITY AND FITNESS.

To take advantage of this warranty, the product or part must be returned to us with transportation charges prepaid. Proof of purchase date and an explanation of the complaint must accompany the merchandise. If our inspection verifies the defect, we will either repair or replace the product at our election or we may elect to refund the purchase price if we cannot readily and quickly provide you with a replacement. We will return repaired products at our expense, but if we determine there is no defect, or that the defect resulted from causes not within the scope of our warranty, then you must bear the cost of returning the product.

This warranty gives you specific legal rights and you may also have other rights which vary from state to state.



26677 Agoura Road • Calabasas, CA 91302 • 1-888-866-5797