

# Owner's Manual & Safety Instructions

**Save This Manual** Keep this manual for the safety warnings and precautions, assembly, operating, inspection, maintenance and cleaning procedures. Write the product's serial number in the back of the manual near the assembly diagram (or month and year of purchase if product has no number). Keep this manual and the receipt in a safe and dry place for future reference.

23a

## **HAULMASTER®**

### **1.5 TON SCISSOR JACK**



Visit our website at: <http://www.harborfreight.com>  
Email our technical support at: [productsupport@harborfreight.com](mailto:productsupport@harborfreight.com)





66907

When unpacking, make sure that the product is intact and undamaged. If any parts are missing or broken, please call 1-888-866-5797 as soon as possible.

Copyright© 2022 by Harbor Freight Tools®. All rights reserved.  
No portion of this manual or any artwork contained herein may be reproduced in any shape or form without the express written consent of Harbor Freight Tools. Diagrams within this manual may not be drawn proportionally. Due to continuing improvements, actual product may differ slightly from the product described herein. Tools required for assembly and service may not be included.

#### **⚠ WARNING**

Read this material before using this product.  
Failure to do so can result in serious injury.  
**SAVE THIS MANUAL.**

WARNING SYMBOLS AND DEFINITIONS	
	This is the safety alert symbol. It is used to alert you to potential personal injury hazards. Obey all safety messages that follow this symbol to avoid possible injury or death.
 <b>DANGER</b>	Indicates a hazardous situation which, if not avoided, will result in death or serious injury.
 <b>WARNING</b>	Indicates a hazardous situation which, if not avoided, could result in death or serious injury.
 <b>CAUTION</b>	Indicates a hazardous situation which, if not avoided, could result in minor or moderate injury.
<b>NOTICE</b> <b>CAUTION</b>	Addresses practices not related to personal injury.

## IMPORTANT SAFETY INFORMATION

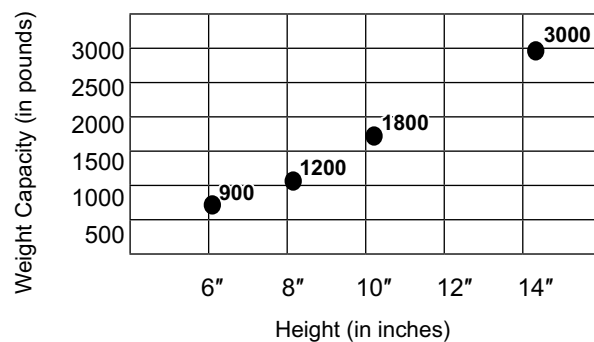
1. Study, understand, and follow all instructions before operating this device.
2. Do not exceed rated capacity.
3. Use only on a hard, level surface capable of supporting the load
4. Support the load with appropriate means immediately after lifting.
5. Failure to heed these markings may result in personal injury and/or property damage.
6. Lift only on areas of the vehicle as specified by the vehicle manufacturer.
7. No alterations shall be made to this product.
8. Only attachments and/or adapters supplied by the manufacturer shall be used.
9. Do not exceed rated capacities AT SPECIFIED HEIGHTS. Do not use if Jack cannot extend at least 6" before lifting load.
10. Do not use blocks underneath or above jack.
11. Use only for emergency tire changing or mounting tire chains.
12. Do not get beneath the vehicle when it is supported by the jack.
13. If vehicle is pushed off jack, discard jack. Do not reuse.
14. Do not use for aircraft purposes.
15. Wear ANSI-approved safety goggles and heavy duty work gloves during use.
16. Keep clear of load while lifting and lowering.
17. Apply parking break and chock tires before using.
18. Inspect before every use; do not use if parts are bent, loose, or damaged.
19. Follow tire changing procedure or tire chain mounting procedure specified in the vehicle manufacturer's owner's manual.
20. Do not stand on the Jack. Do not have people or pets in the vehicle you are attempting to raise.
21. Do not lift the vehicle more than necessary. Lifting more than necessary may cause unexpected movement or tipping. Only lift the vehicle until one wheel is off the ground.
22. Keep hands and fingers away from joints or jack interior.
23. Be aware of dynamic loading! Sudden load movement may briefly create excess load causing product failure.
24. Maintain labels and nameplates on tool. These carry important safety information. If unreadable or missing, contact Harbor Freight Tools for replacement.
25. This product is not a toy. Keep it out of reach of children.
26. The warnings, precautions, and instructions discussed in this manual cannot cover all possible conditions and situations that may occur. The operator must understand that common sense and caution are factors which cannot be built into this product but must be supplied by the operator.



**SAVE THESE INSTRUCTIONS.**

## Specifications

Jack Capacity	3000 lb. extended 14" or more 1800 lb. extended 10" or more 1200 lb. extended 8" or more 900 lb. extended 6" or more
Height Range	3-3/4" to 15-1/8"

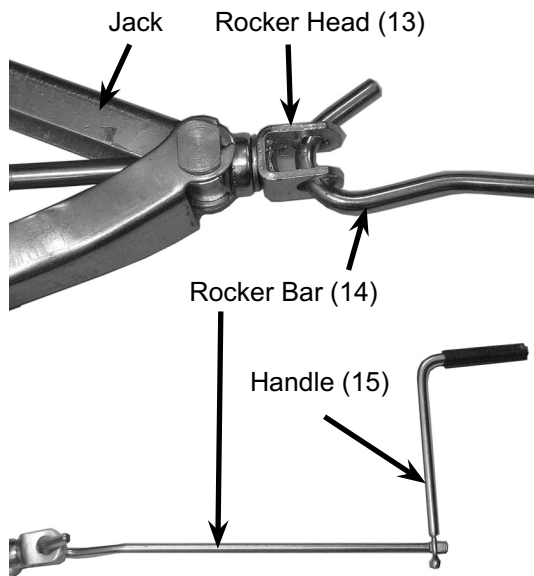


## Operating Instructions

### **⚠WARNING**

Park vehicle on a flat, level, solid, surface safely away from oncoming traffic. Turn off the vehicle's engine. Place the vehicle's transmission in "PARK" (if automatic) or in its lowest gear (if manual). Set the vehicle's emergency brake. Then, chock the wheels that are not being lifted.

1. Assemble the Handle (15) and Rocker Bar (14).
2. Slide the hooked end of the Rocker Bar into the holes in the Rocker Head (13).
3. Attach Handle to the flat end of the Rocker Bar.



4. If the Jack is not fully collapsed, lower the Jack so that it will easily slide under the vehicle.
5. Chock the wheels opposite the wheel to be removed.
6. To make it easier to remove the wheel's lug nuts, slightly loosen the lug nuts prior to raising the wheel.
7. Slide the Jack under the vehicle near the wheel being removed.

**IMPORTANT:** The Scissor Jack is designed for use on vehicles with frame seams capable of sustaining rated capacity loads. Carefully position the Scissor Jack under the vehicle manufacturer's recommended lift point.

8. Rotate the Handle clockwise, raising the Jack. Continue rotating the Handle until the vehicle is raised enough so the wheel is approximately 1" off the ground.
9. Remove the lug nuts from the vehicle's wheel. Remove the wheel, and replace it with the spare wheel (not included). Replace and tighten all the lug nuts onto the wheel.
10. Remove the old wheel, tools and any other objects from under the vehicle.
11. Rotate the Handle counterclockwise to lower the Jack.
12. Continue rotating the Handle until the Jack is completely collapsed to the ground.
13. Double check and re-tighten the wheel lugs.
14. Remove the Jack.

# **HAULMASTER®**

## Maintenance



Procedures not specifically explained in this manual must be performed only by a qualified technician.

### **⚠ WARNING**

#### **TO PREVENT SERIOUS INJURY FROM TOOL FAILURE:**

Do not use damaged equipment. If abnormal noise occurs, have the problem corrected before further use.

#### **TO PREVENT SERIOUS INJURY:**

Remove load from the jack before any procedure on this page.

1. **BEFORE EACH USE**, inspect the general condition of the equipment. Check for:
  - loose hardware
  - misalignment or binding of moving parts
  - cracked or broken parts
  - any other condition that may affect its safe operation.
  - lubricate moving parts of the Jack with lubricating oil.
2. Before each use and after the inspection, thoroughly test the Scissor Jack for proper operation prior to its actual use.
3. **AFTER USE**, clean the tool with clean cloth.
4. Store the jack in a safe, dry location out of reach of children and other non-authorized people.

**Note:** Lubricate the threads of the Spindle Rod with high quality light weight oil (not included). Keeping the Screw Rod well oiled and free of rust will avoid the jack binding during use.

**Note:** Do not use motor oil or grease to lubricate Jack.

# **HAULMASTER®**

### Parts List

Part	Description	Qty
1	Jacking Head Rivet	1
2	Jacking Head	1
3	Jacking Head Seat	1
4	Upper Fork	2
5	Nut	1
6	Lower Fork	2
7	Base	1
8	Rivet	4

Part	Description	Qty
9	Supporting Axle	1
10	Bearing	1
11	Washer	3
12	Spindle Rod	1
13	Rocker Head	1
14	Rocker Bar	1
15	Handle	1

**Record Product's Serial Number Here:**

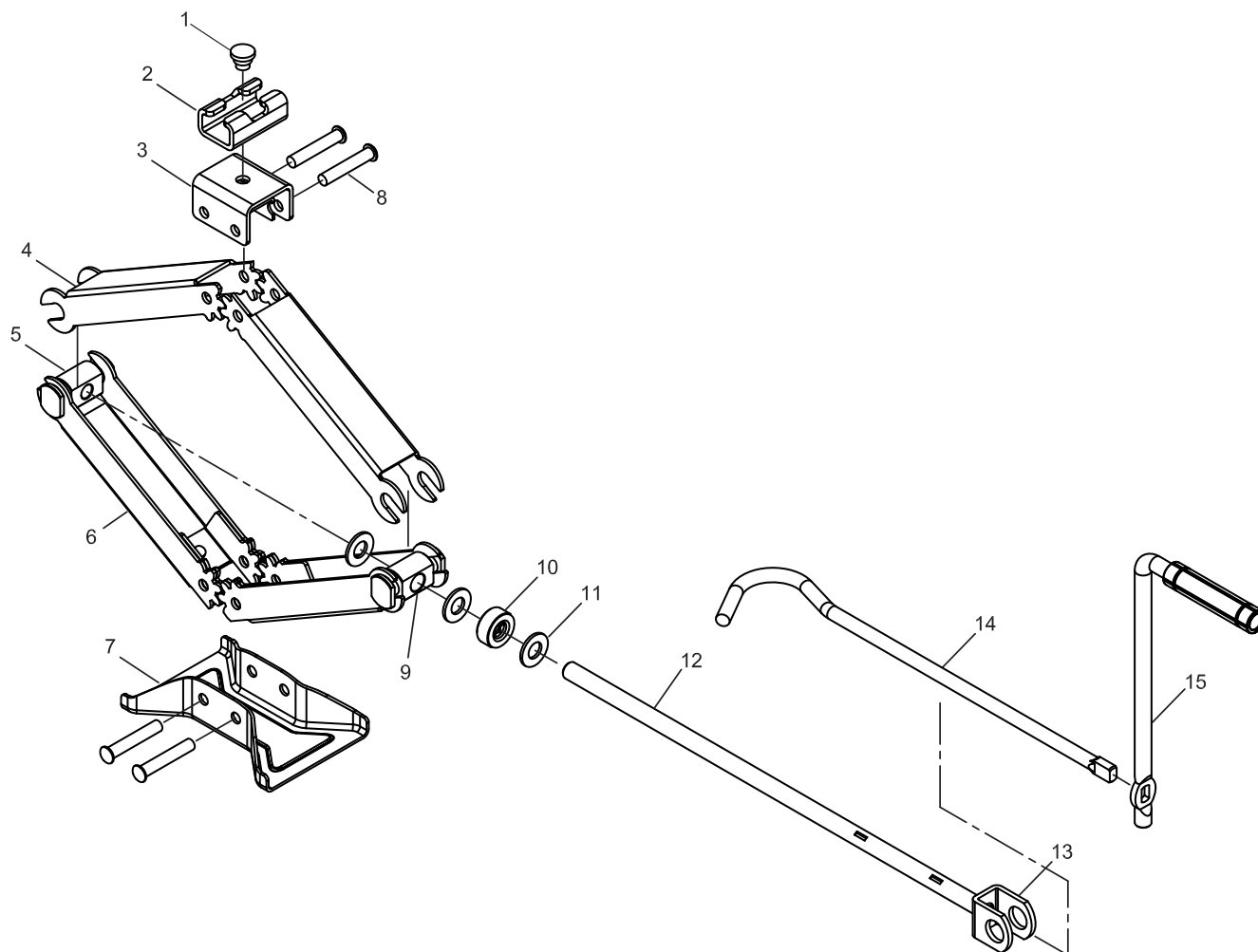
---

**Note:** If product has no serial number, record month and year of purchase instead.

**Note:** Some parts are listed and shown for illustration purposes only, and are not available individually as replacement parts. Parts may not be interchangeable. Specify UPC 193175492531 when ordering.

# Assembly Diagram

---



## PLEASE READ THE FOLLOWING CAREFULLY

---

THE MANUFACTURER AND/OR DISTRIBUTOR HAS PROVIDED THE PARTS DIAGRAM IN THIS MANUAL AS A REFERENCE TOOL ONLY. NEITHER THE MANUFACTURER NOR DISTRIBUTOR MAKES ANY REPRESENTATION OR WARRANTY OF ANY KIND TO THE BUYER THAT HE OR SHE IS QUALIFIED TO MAKE ANY REPAIRS TO THE PRODUCT OR THAT HE OR SHE IS QUALIFIED TO REPLACE ANY PARTS OF THE PRODUCT. IN FACT, THE MANUFACTURER AND/OR DISTRIBUTOR EXPRESSLY STATES THAT ALL REPAIRS AND PARTS REPLACEMENTS SHOULD BE UNDERTAKEN BY CERTIFIED AND LICENSED TECHNICIANS AND NOT BY THE BUYER. THE BUYER ASSUMES ALL RISK AND LIABILITY ARISING OUT OF HIS OR HER REPAIRS TO THE ORIGINAL PRODUCT OR REPLACEMENT PARTS THERETO, OR ARISING OUT OF HIS OR HER INSTALLATION OF REPLACEMENT PARTS THERETO.

### Limited 90 Day Warranty

Harbor Freight Tools Co. makes every effort to assure that its products meet high quality and durability standards, and warrants to the original purchaser that this product is free from defects in materials and workmanship for the period of 90 days from the date of purchase. This warranty does not apply to damage due directly or indirectly, to misuse, abuse, negligence or accidents, repairs or alterations outside our facilities, criminal activity, improper installation, normal wear and tear, or to lack of maintenance. We shall in no event be liable for death, injuries to persons or property, or for incidental, contingent, special or consequential damages arising from the use of our product. Some states do not allow the exclusion or limitation of incidental or consequential damages, so the above limitation of exclusion may not apply to you. THIS WARRANTY IS EXPRESSLY IN LIEU OF ALL OTHER WARRANTIES, EXPRESS OR IMPLIED, INCLUDING THE WARRANTIES OF MERCHANTABILITY AND FITNESS.

To take advantage of this warranty, the product or part must be returned to us with transportation charges prepaid. Proof of purchase date and an explanation of the complaint must accompany the merchandise. If our inspection verifies the defect, we will either repair or replace the product at our election or we may elect to refund the purchase price if we cannot readily and quickly provide you with a replacement. We will return repaired products at our expense, but if we determine there is no defect, or that the defect resulted from causes not within the scope of our warranty, then you must bear the cost of returning the product.

This warranty gives you specific legal rights and you may also have other rights which vary from state to state.



26677 Agoura Road • Calabasas, CA 91302 • 1-888-866-5797