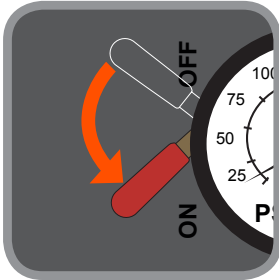


OILLESS VERTICAL AIR COMPRESSOR START UP GUIDE

FOR ITEMS: #69666 (17 gallon)
#69669 (26 gallon)

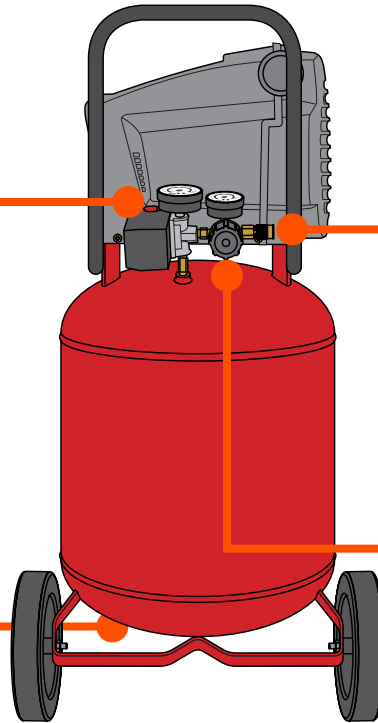
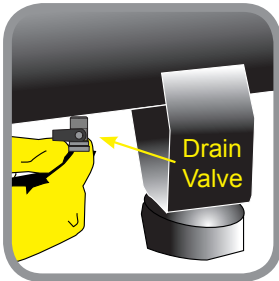
4

Turn lever to ON to turn unit ON.



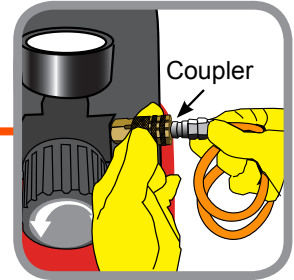
3

CLOSE DRAIN VALVE.



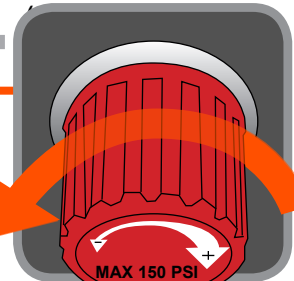
1

Connect AIR LINE to Coupler.

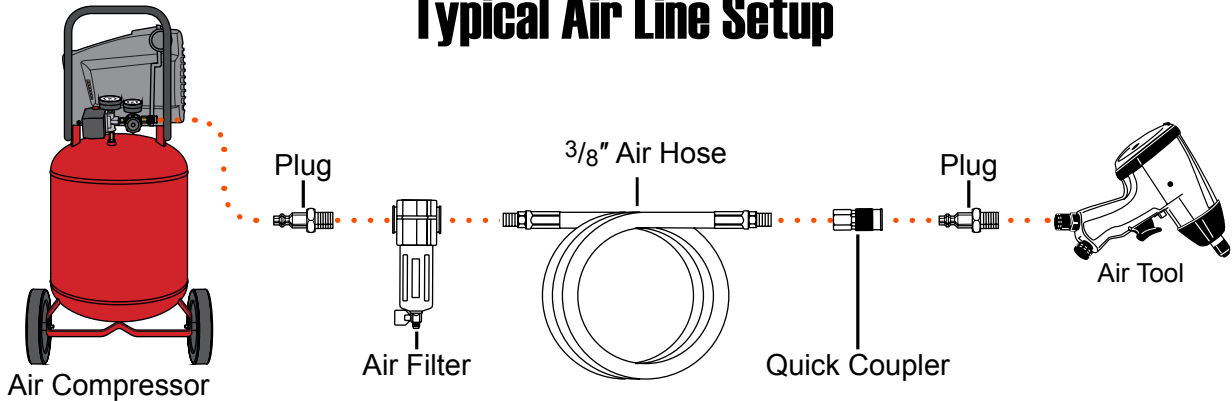


2

CLOSE REGULATOR KNOB



Typical Air Line Setup



Thread seal tape is recommended for all threaded connections.

Recommended Accessories

- 3/8" Air Hose
- 1/4" Accessory Kit
- Air Filter

Use of an extension cord is not recommended.