

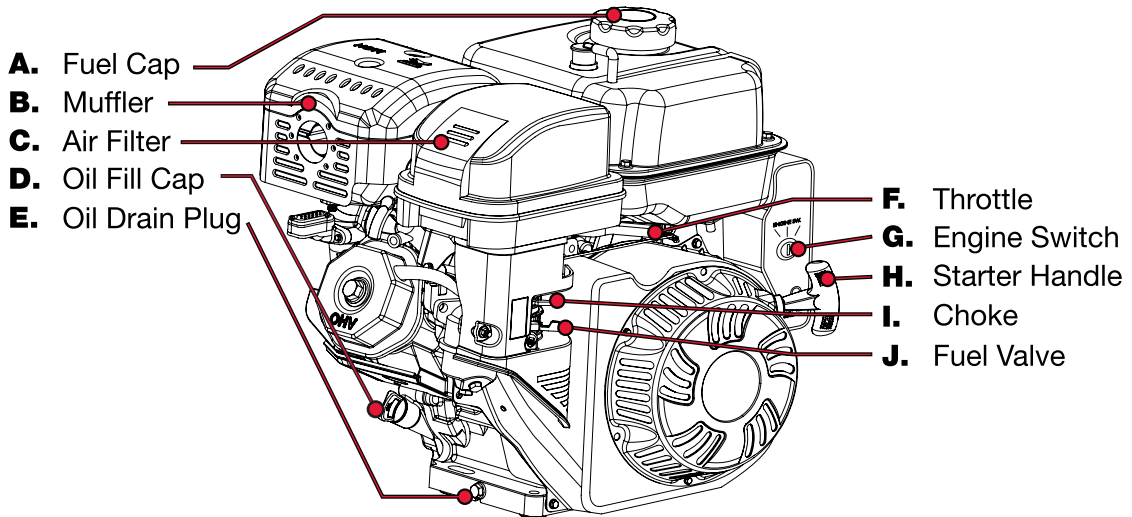
PREDATOR[®]

ENGINES

QUICK START GUIDE

Horizontal Shaft Gas Engine 69727 69730

Engine Components

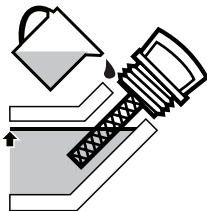


READ AND UNDERSTAND USER MANUAL BEFORE USE.

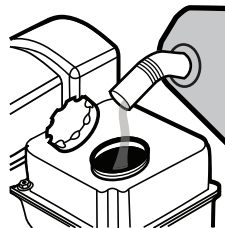


Add Fluids

Check oil and fuel levels
If needed, fill as shown below



Add oil to engine
crankcase

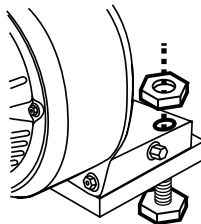


Add fuel to within
1" of the rim of the tank

Note: Use regular Unleaded 87 Octane.
10% Ethanol blend ok.

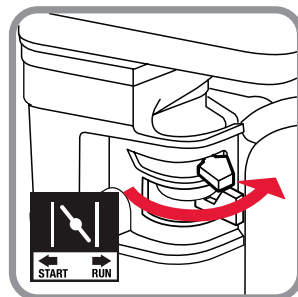
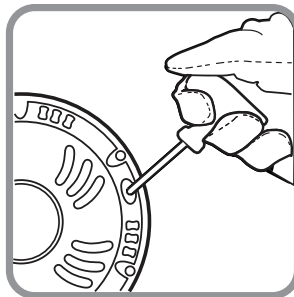
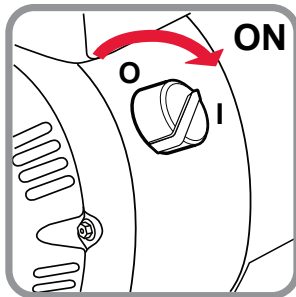
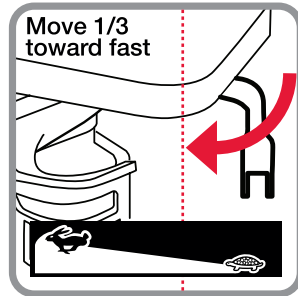
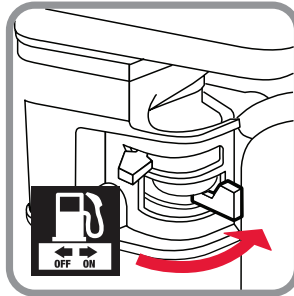
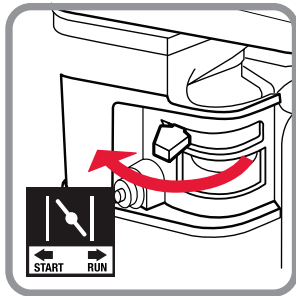
Engine not designed for E85 Ethanol blend.

Assembly



Mount the engine
securely in place

Starting Procedure



IMPORTANT: Breaking-in the engine will help to ensure proper equipment and engine performance. The operational break-in period will last about 3 hours of use. During this period: • Do not apply a heavy load. • Do not operate the engine at its maximum speed.



Visit our website at: <http://www.harborfreight.com>
Email our technical support at: predator@harborfreight.com

READ AND UNDERSTAND USER MANUAL BEFORE USE.