

# Owner's Manual & Safety Instructions

**Save This Manual** Keep this manual for the safety warnings and precautions, assembly, operating, inspection, maintenance and cleaning procedures. Write the product's serial number in the back of the manual near the assembly diagram (or month and year of purchase if product has no number). Keep this manual and the receipt in a safe and dry place for future reference.

23k

## GARDEN WAGON



**70819**

Visit our website at: <http://www.harborfreight.com>  
Email our technical support at: [productsupport@harborfreight.com](mailto:productsupport@harborfreight.com)

When unpacking, make sure that the product is intact and undamaged. If any parts are missing or broken, please call 1-888-866-5797 as soon as possible.

Copyright© 2023 by Harbor Freight Tools®. All rights reserved.  
No portion of this manual or any artwork contained herein may be reproduced in any shape or form without the express written consent of Harbor Freight Tools. Diagrams within this manual may not be drawn proportionally. Due to continuing improvements, actual product may differ slightly from the product described herein. Tools required for assembly and service may not be included.

### **⚠ WARNING**

Read this material before using this product. Failure to do so can result in serious injury. **SAVE THIS MANUAL.**

## Specifications

Tires	10" Pneumatic
Weight Capacity	330 lb.

## IMPORTANT SAFETY INFORMATION

### **⚠️ WARNING**

**Read all safety warnings and instructions.**

*Failure to follow the warnings and instructions may result in serious injury.*

**Save all warnings and instructions for future reference.**

The warnings, precautions, and instructions discussed in this instruction manual cannot cover all possible conditions and situations that may occur. It must be understood by the operator that common sense and caution are factors which cannot be built into this product, but must be supplied by the operator.

### Assembly Precautions

1. Assemble only according to these instructions. Improper assembly can create hazards.
2. Wear ANSI-approved safety goggles and heavy-duty work gloves during assembly.
3. Keep assembly area clean and well lit.
4. Keep bystanders out of area during assembly.
5. Do not assemble when tired or when under influence of drugs or medication.
6. Weight capacity and other product capabilities apply to properly and completely assembled product only.

### Use Precautions

1. Do not exceed listed weight capacity, evenly distributed.  
**Be aware of dynamic loading!** Sudden load movement may briefly create excess load causing product failure.
2. Do not modify this Wagon, and do not use this Wagon for a purpose for which it was not intended.
3. This product is not a toy. Do not allow children to play with or near this item.
4. Never allow anyone to ride in or on the Wagon.
5. Do not transport animals in this Wagon.
6. Use as intended only.
7. Use only on surface able to properly support Wagon and load.
8. Maintain product labels and nameplates. These carry important safety information. If unreadable or missing, contact Harbor Freight Tools for a replacement.

### Before Each Use

1. Check Tire condition and air pressure.
2. Check that all items are securely fastened in the Wagon.
3. Check Wagon for loose bolts and nuts, structural cracks and bends, and any other condition that may affect its safe operation. Do not use the Wagon even if minor damage appears.

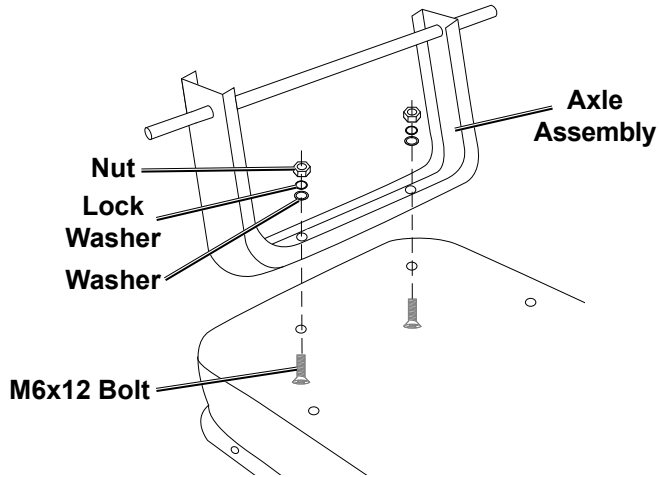


**SAVE THESE INSTRUCTIONS.**

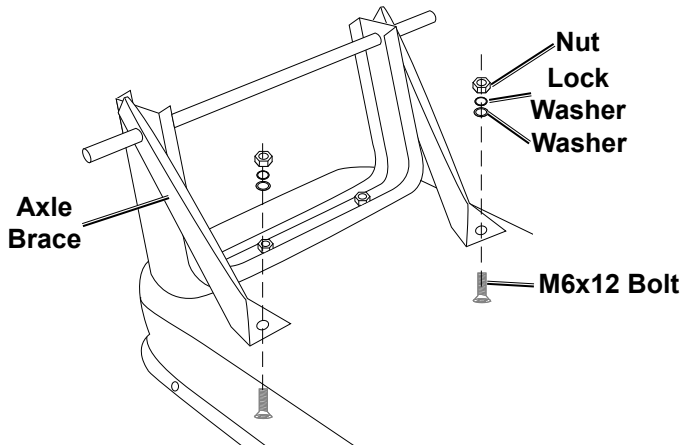
## Assembly

**Note:** For additional information regarding the parts listed in the following pages, refer to the Assembly Diagram on page 7.

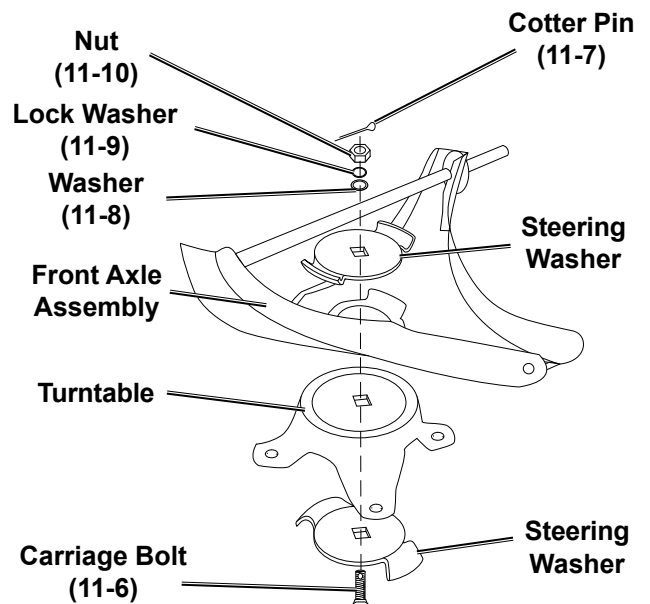
1. Turn Tray upside down.
2. Attach Axle Assembly to Tray using two M6x12 Bolts, Lock Washers, and Nuts (11-3), tighten Nuts securely.



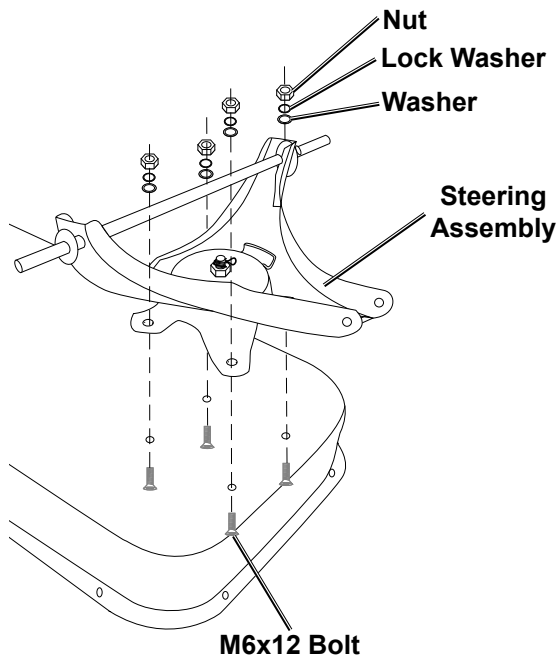
3. Attach Axle Braces to Axle Assembly using two M6x12 Bolts, Washers, Lock Washers and Nuts (11-3), tighten Nuts securely.



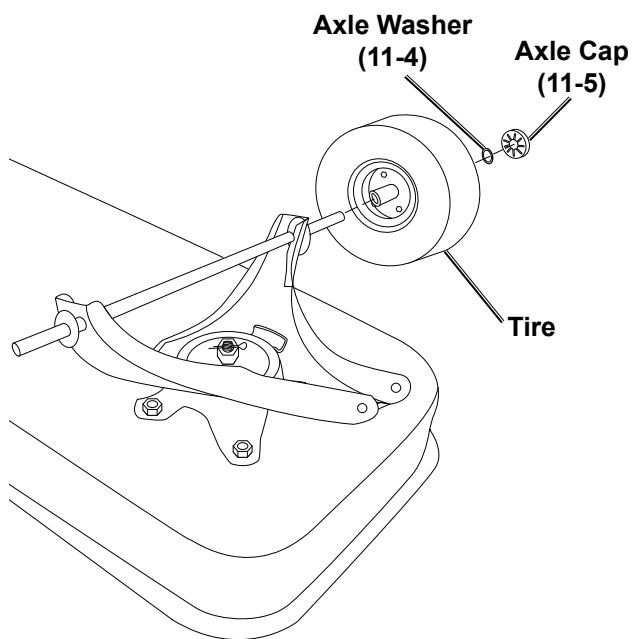
4. Push Carriage Bolt (11-6) through Steering Washer, then place Steering Washer into Turntable, aligning tabs on Steering Washer with notches in Turntable.
5. Place Front Axle Assembly on top of Turntable, then place Steering Washer inside, aligning tabs on Steering Washer with notches in Front Axle Assembly.
6. Secure Carriage Bolt with Washer (11-8), Lock Washer (11-9), and Nut (11-10). Tighten Nut snugly, hold Turntable and rotate Front Axle Assembly, check that there is not too much friction between them. Tighten or loosen Nut to adjust.
7. Insert Cotter Pin (11-7) through hole in Carriage Bolt and bend the legs back around the Bolt.



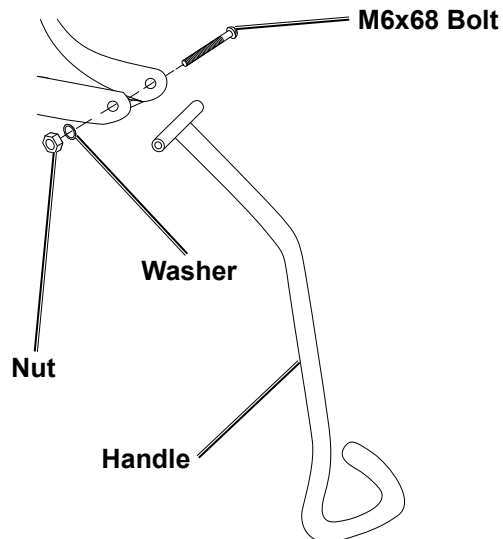
8. Attach Steering Assembly to Tray using four M6x12 Bolts, Washers, Lock Washers, and Nuts (11-3). Tighten Nuts securely.



9. Attach Tires to Axles, secure with Axle Washer (11-4) and Axle Cap (11-5).



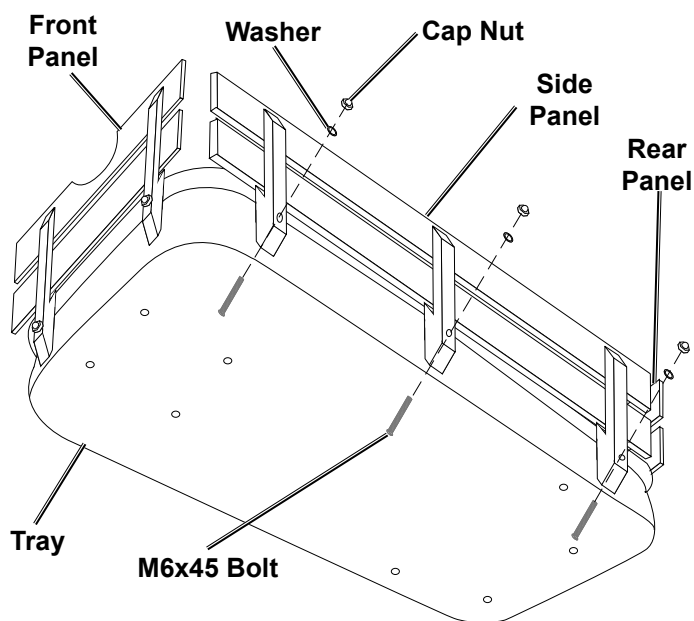
10. Attach Handle to Steering Assembly using a Mx68 Bolt, Washer, and Nut (11-2). Tighten Nut securely.



11. Turn Wagon upright.

**Note:** The Front Panel has a curved slat.

12. Attach Front, Rear, and Side Panels to Tray using ten M6x45 Bolts, Washers, and Cap Nuts (11-1). Tighten Cap Nuts securely.



## Operation Instructions



Read the **ENTIRE IMPORTANT SAFETY INFORMATION** section at the beginning of this manual including all text under subheadings therein before set up or use of this product.

1. Use Handle to pull wagon and transport loads.
2. Turn Handle in the direction that you wish the wagon to go.

## Maintenance and Servicing Instructions



Procedures not specifically explained in this manual must be performed only by a qualified technician.

## Cleaning, Maintenance, and Lubrication

---

1. **BEFORE EACH USE**, inspect the general condition of the Wagon. Check for:
  - loose hardware,
  - misalignment or binding of moving parts,
  - cracked or broken parts, and
  - any other condition that may affect its safe operation.
2. **AFTER USE**, wipe external surfaces of the tool with clean cloth.
3. Store Wagon in an indoor dry area out reach of children.

**Record Product's Serial Number Here:**

---

**Note:** If product has no serial number, record month and year of purchase instead.

**Note:** Some parts are listed and shown for illustration purposes only and are not available individually as replacement parts. Specify UPC 193175514790 when ordering parts.

## **PLEASE READ THE FOLLOWING CAREFULLY**

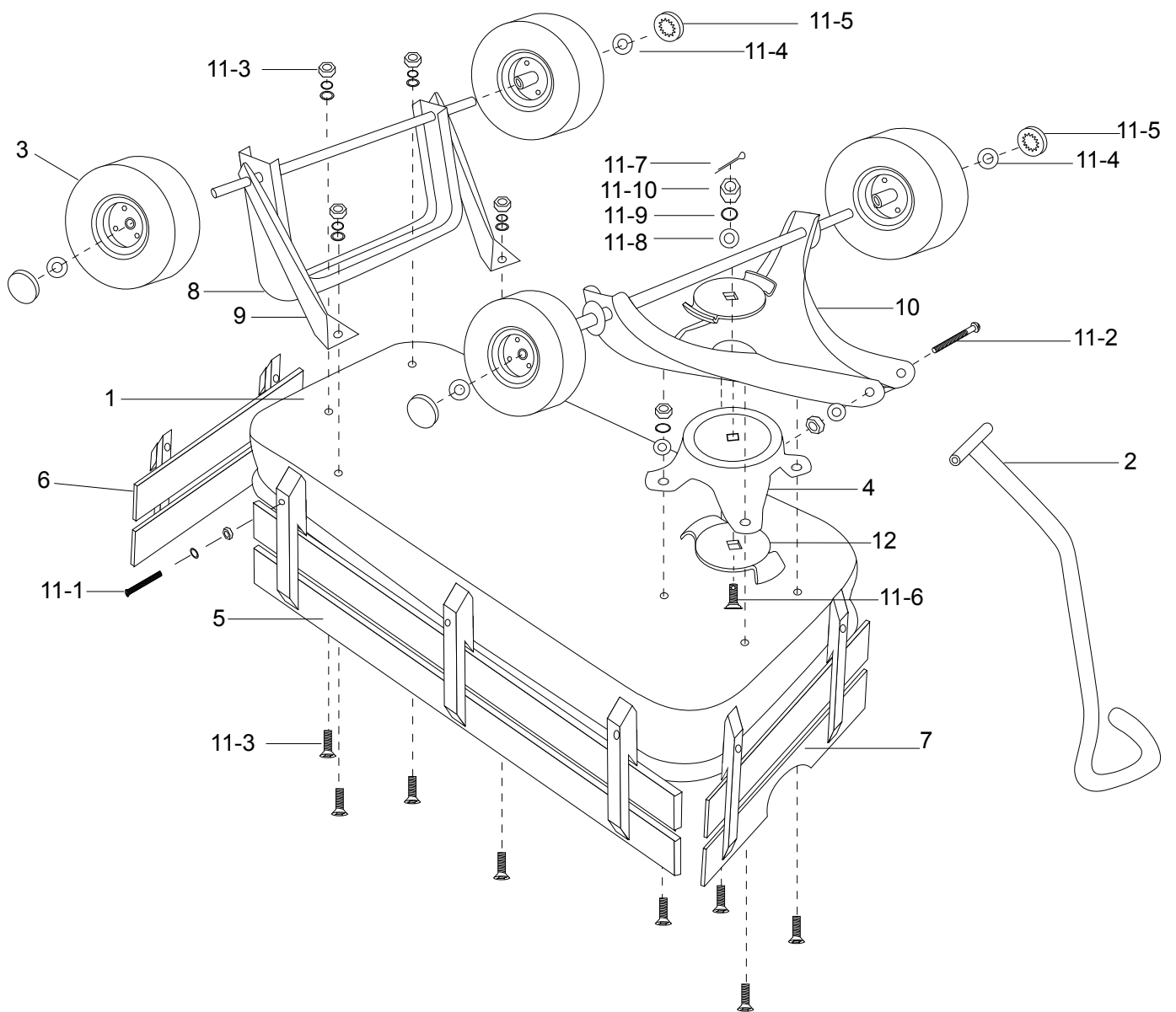
---

THE MANUFACTURER AND/OR DISTRIBUTOR HAS PROVIDED THE PARTS LIST AND ASSEMBLY DIAGRAM IN THIS DOCUMENT AS A REFERENCE TOOL ONLY. NEITHER THE MANUFACTURER OR DISTRIBUTOR MAKES ANY REPRESENTATION OR WARRANTY OF ANY KIND TO THE BUYER THAT HE OR SHE IS QUALIFIED TO MAKE ANY REPAIRS TO THE PRODUCT, OR THAT HE OR SHE IS QUALIFIED TO REPLACE ANY PARTS OF THE PRODUCT. IN FACT, THE MANUFACTURER AND/OR DISTRIBUTOR EXPRESSLY STATES THAT ALL REPAIRS AND PARTS REPLACEMENTS SHOULD BE UNDERTAKEN BY CERTIFIED AND LICENSED TECHNICIANS, AND NOT BY THE BUYER. THE BUYER ASSUMES ALL RISK AND LIABILITY ARISING OUT OF HIS OR HER REPAIRS TO THE ORIGINAL PRODUCT OR REPLACEMENT PARTS THERETO, OR ARISING OUT OF HIS OR HER INSTALLATION OF REPLACEMENT PARTS THERETO.

# Parts List and Diagram

Part	Description	Qty
1	Tray	1
2	Handle	1
3	Tire	4
4	Turntable	1
5	Side Panel	2
6	Rear Panel	1
7	Front Panel	1
8	Axle Assembly	1
9	Axle Brace	2
10	Front Axle Assembly	1
11-1	M6x45 Bolt, Washer and Cap Nut	10

Part	Description	Qty
11-2	M6x68 Bolt, Washer and Nut	1
11-3	M6x12 Bolt, Washer, Lock Washer and Nut	8
11-4	M16x30 Axle Washer	4
11-5	Axle Cap	4
11-6	M9.5x24.8 Carriage Bolt	1
11-7	Cotter Pin	1
11-8	M10.8x25 Washer	1
11-9	Lock Washer	1
11-10	Nut	1
12	Steering Washer	2



## Limited 90 Day Warranty

Harbor Freight Tools Co. makes every effort to assure that its products meet high quality and durability standards, and warrants to the original purchaser that this product is free from defects in materials and workmanship for the period of 90 days from the date of purchase. This warranty does not apply to damage due directly or indirectly, to misuse, abuse, negligence or accidents, repairs or alterations outside our facilities, criminal activity, improper installation, normal wear and tear, or to lack of maintenance. We shall in no event be liable for death, injuries to persons or property, or for incidental, contingent, special or consequential damages arising from the use of our product. Some states do not allow the exclusion or limitation of incidental or consequential damages, so the above limitation of exclusion may not apply to you. THIS WARRANTY IS EXPRESSLY IN LIEU OF ALL OTHER WARRANTIES, EXPRESS OR IMPLIED, INCLUDING THE WARRANTIES OF MERCHANTABILITY AND FITNESS.

To take advantage of this warranty, the product or part must be returned to us with transportation charges prepaid. Proof of purchase date and an explanation of the complaint must accompany the merchandise. If our inspection verifies the defect, we will either repair or replace the product at our election or we may elect to refund the purchase price if we cannot readily and quickly provide you with a replacement. We will return repaired products at our expense, but if we determine there is no defect, or that the defect resulted from causes not within the scope of our warranty, then you must bear the cost of returning the product.

This warranty gives you specific legal rights and you may also have other rights which vary from state to state.