

Owner's Manual & Safety Instructions

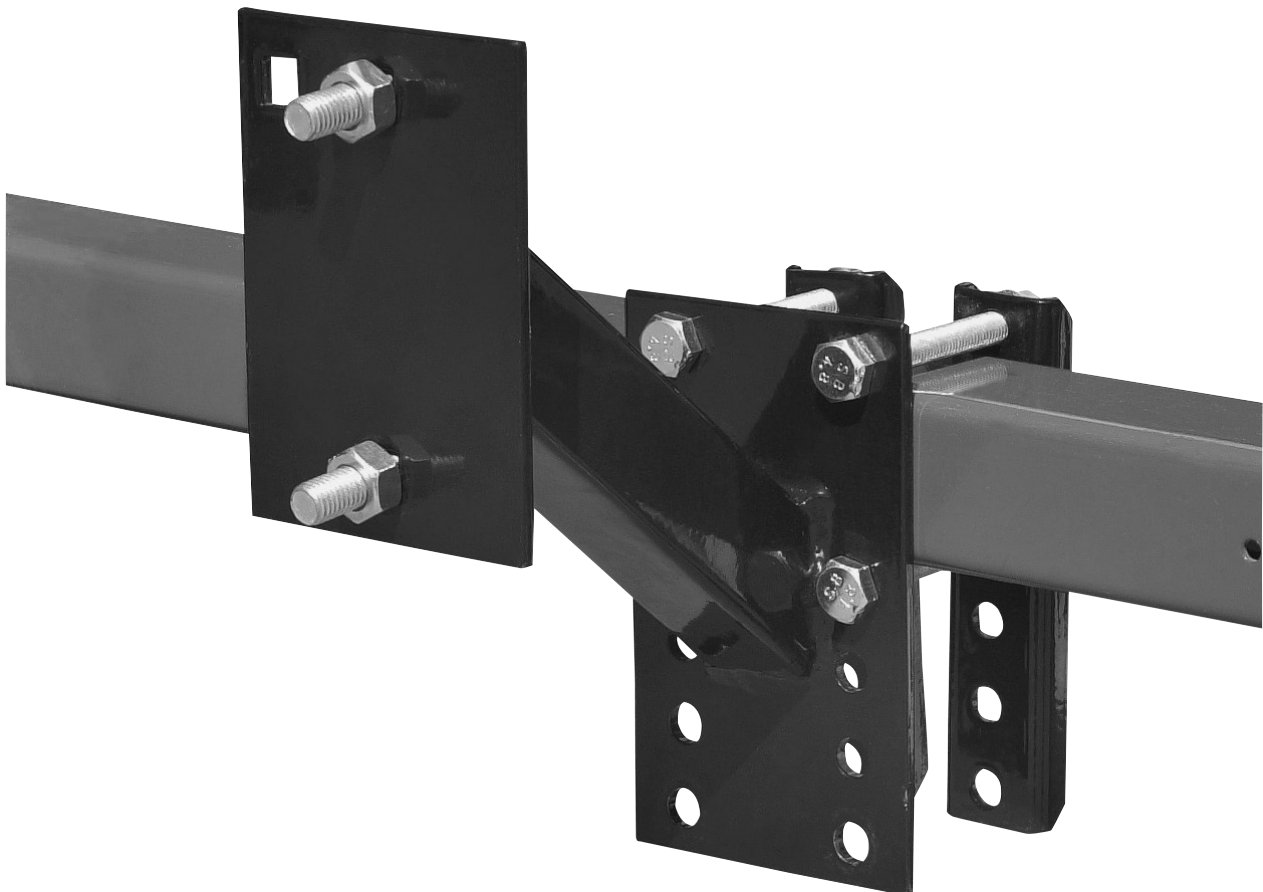
Save This Manual Keep this manual for the safety warnings and precautions, assembly, operating, inspection, maintenance and cleaning procedures. Write the product's serial number in the back of the manual near the assembly diagram (or month and year of purchase if product has no number). Keep this manual and the receipt in a safe and dry place for future reference.

ITEM 93341

HaulMaster[®]

TRAILER

SPARE TIRE CARRIER



Visit our website at: <http://www.harborfreight.com>
Email our technical support at: tech@harborfreight.com

REV 12h

When unpacking, make sure that the product is intact and undamaged. If any parts are missing or broken, please call 1-800-444-3353 as soon as possible.

Copyright © 2005 by Harbor Freight Tools[®]. All rights reserved.
No portion of this manual or any artwork contained herein may be reproduced in any shape or form without the express written consent of Harbor Freight Tools. Diagrams within this manual may not be drawn proportionally. Due to continuing improvements, actual product may differ slightly from the product described herein. Tools required for assembly and service may not be included.

⚠ WARNING

**Read this material before using this product.
Failure to do so can result in serious injury.
SAVE THIS MANUAL.**

Specifications

Pre-drilled holes	7/16" 360°
Weight Capacity	100 lb.

IMPORTANT SAFETY INFORMATION

Installation Precautions

1. Install only according to these instructions. Improper installation can create hazards.
2. Wear ANSI-approved safety goggles and heavy-duty work gloves during installation.
3. Keep installation area clean and well lit.
4. Keep bystanders out of the area during installation.
5. Do not install when tired or when under the influence of alcohol, drugs or medication.
6. Weight capacity and other product capabilities apply to properly and completely installed product only.

Use Precautions

1. This product is not a toy. Do not allow children to play with or near this item.
2. Use as intended only.
3. Inspect before every use; do not use if parts are loose or damaged.
4. Do not exceed listed weight capacity.
Be aware of dynamic loading!
Sudden load movement may briefly create excess load causing product failure.
5. Maintain product labels and nameplates. These carry important safety information. If unreadable or missing, contact Harbor Freight Tools for a replacement.
6. **Use the right product for the job.** There are certain applications for which the Trailer Spare Tire Carrier was designed. Do not modify the Spare Tire Carrier and do not use this product for a purpose for which it was not intended.
7. **Replacement parts and accessories.** When servicing, use only identical replacement parts. Use of any other parts will void the warranty.
8. **The tire (not included) attached to this Carrier should be locked in place with nuts tightened to 90 ft. lb.**
9. **Make certain that no persons or pets are under the Trailer Carrier or Trailer during loading.**
10. The warnings, cautions, and instructions discussed in this instruction manual cannot cover all possible conditions and situations that may occur. It must be understood by the operator that common sense and caution are factors which cannot be built into this product, but must be supplied by the operator.
11. Read and understand all instructions and safety precautions as outlined in the manufacturer's manual for the trailer you are using. Make sure to mount the Trailer Carrier to the manufacturer's recommended mounting points.
12. **It is the trailer owner's responsibility to make sure the usage of this product meets all local motor vehicle laws and regulations. Do not obscure marker, tail or running lights or license plate.**
13. **Make certain bracket and tire do not interfere with the trailer's normal movement or blocks the driver's view.**



Installation Instructions



Read the **ENTIRE IMPORTANT SAFETY INFORMATION** section at the beginning of this document including all text under subheadings therein before set up or use of this product.

1. Secure the unloaded trailer with wheel chocks (blocks) on a hard, flat surface capable of supporting the weight of the trailer, Trailer Spare Tire Carrier and required tools.
2. Raise the trailer tongue and secure it with two supports, one on each side of the trailer tongue.
3. Position the Mounting Bracket (2) in the correct location against the side of the trailer tongue.
5. Insert four Hex Bolts (3) through the Mounting Plates (1) as close to the trailer tongue as possible. Slide on Washers (8), Spring Lock Washers (7) and thread on Nut (6).
6. Use a torque wrench to tighten the Nuts (6) to 90 ft. lb.
7. Mount the tire on the Tire Mounting Plate with the valve facing outward so that the tire air pressure can be checked at any interval.

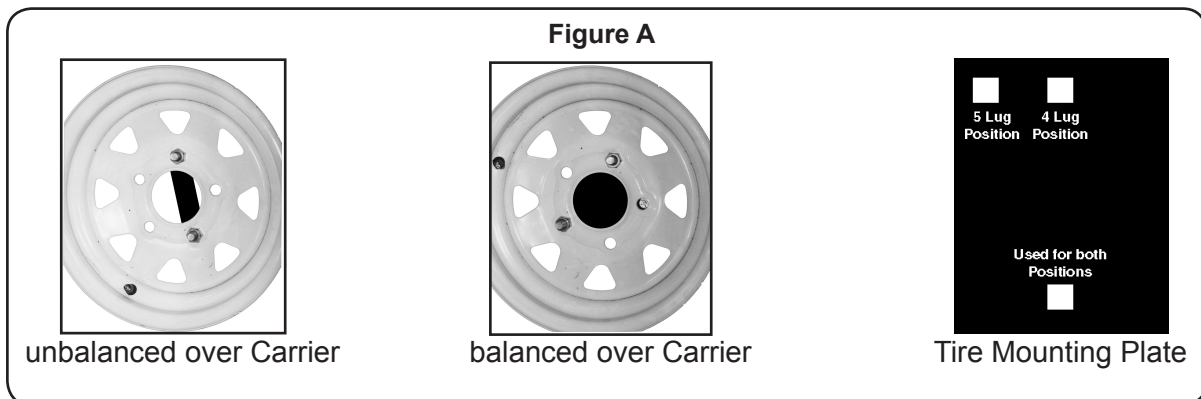
Note: The spare tire will be located to the side of the trailer tongue.

Note: The angled Tire Mounting Plate should be angled upward (above) the position of the Trailer Tongue Plate.

4. Attach the Mounting Bar (1) to the Mounting Bracket (2). Set the Mounting Bars (1) (containing six holes) flat against the trailer tongue so that the edges of the Mounting Bars (1) curve out away from the trailer tongue.

WARNING! Make certain that the tire is centered on the Tire Carrier when mounted - see Figure 1.

8. Insert Round Head Bolts (4) up through the Tire Mounting Plate and through the Wheel. Thread on Nuts (5), Spring Washers (7), and Washers (8). Securely tighten and torque all hardware to 90 ft. lb.



Maintenance

Before each use, inspect the Spare Tire Carrier for its general condition. Check for loose bolts, cracked, bent or broken parts and any other condition that may affect its safe operation.

PLEASE READ THE FOLLOWING CAREFULLY

THE MANUFACTURER AND/OR DISTRIBUTOR HAS PROVIDED THE PARTS LIST AND INSTALLATION DIAGRAM IN THIS DOCUMENT AS A REFERENCE TOOL ONLY. NEITHER THE MANUFACTURER OR DISTRIBUTOR MAKES ANY REPRESENTATION OR WARRANTY OF ANY KIND TO THE BUYER THAT HE OR SHE IS QUALIFIED TO MAKE ANY REPAIRS TO THE PRODUCT, OR THAT HE OR SHE IS QUALIFIED TO REPLACE ANY PARTS OF THE PRODUCT. IN FACT, THE MANUFACTURER AND/OR DISTRIBUTOR EXPRESSLY STATES THAT ALL REPAIRS AND PARTS REPLACEMENTS SHOULD BE UNDERTAKEN BY CERTIFIED AND LICENSED TECHNICIANS, AND NOT BY THE BUYER. THE BUYER ASSUMES ALL RISK AND LIABILITY ARISING OUT OF HIS OR HER REPAIRS TO THE ORIGINAL PRODUCT OR REPLACEMENT PARTS THERETO, OR ARISING OUT OF HIS OR HER INSTALLATION OF REPLACEMENT PARTS THERETO.

REV 06a

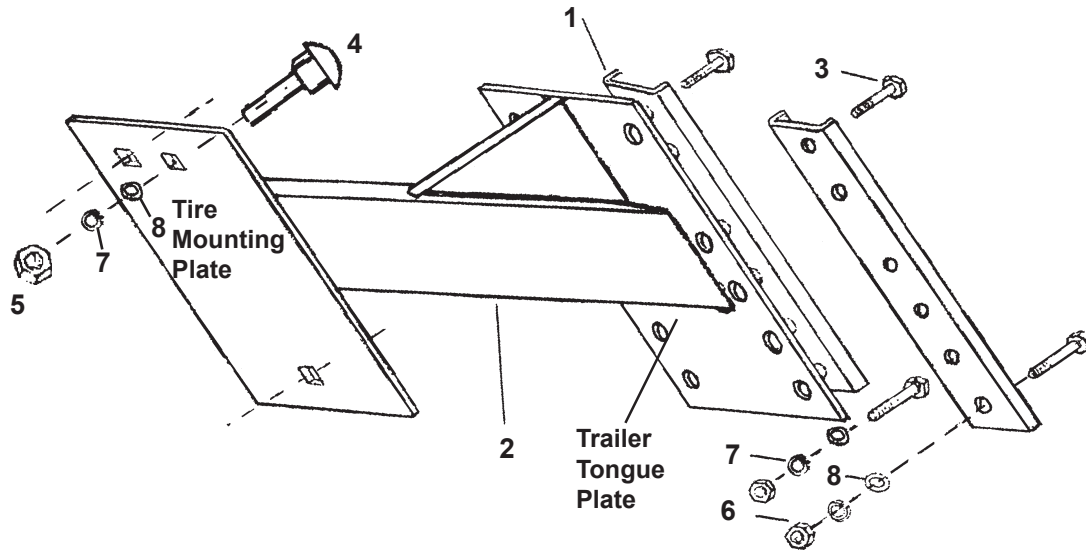
Parts List and Diagram

Part	Description	Qty
1	Mounting Bar	2
2	Mounting Bracket	1
3	Hex Bolt	4
4	Round Head Bolt	2
5	Nut	2
6	Nut	4
7	Spring Lock Washer	6
8	Washer	6

Record Serial Number Here:

Note: If product has no serial number, record month and year of purchase instead.

Note: Some parts are listed and shown for illustration purposes only, and are not available individually as replacement parts.



Limited 90 Day Warranty

Harbor Freight Tools Co. makes every effort to assure that its products meet high quality and durability standards, and warrants to the original purchaser that this product is free from defects in materials and workmanship for the period of 90 days from the date of purchase. This warranty does not apply to damage due directly or indirectly, to misuse, abuse, negligence or accidents, repairs or alterations outside our facilities, criminal activity, improper installation, normal wear and tear, or to lack of maintenance. We shall in no event be liable for death, injuries to persons or property, or for incidental, contingent, special or consequential damages arising from the use of our product. Some states do not allow the exclusion or limitation of incidental or consequential damages, so the above limitation of exclusion may not apply to you. THIS WARRANTY IS EXPRESSLY IN LIEU OF ALL OTHER WARRANTIES, EXPRESS OR IMPLIED, INCLUDING THE WARRANTIES OF MERCHANTABILITY AND FITNESS.

To take advantage of this warranty, the product or part must be returned to us with transportation charges prepaid. Proof of purchase date and an explanation of the complaint must accompany the merchandise. If our inspection verifies the defect, we will either repair or replace the product at our election or we may elect to refund the purchase price if we cannot readily and quickly provide you with a replacement. We will return repaired products at our expense, but if we determine there is no defect, or that the defect resulted from causes not within the scope of our warranty, then you must bear the cost of returning the product.

This warranty gives you specific legal rights and you may also have other rights which vary from state to state.

HaulMaster®

3491 Mission Oaks Blvd. • PO Box 6009 • Camarillo, CA 93011 • (800) 444-3353