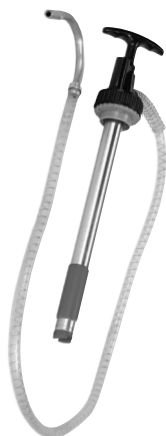


Copyright© 2006 by Harbor Freight Tools®. All rights reserved. No portion of this document or any artwork contained herein may be reproduced in any shape or form without the express written consent of Harbor Freight Tools. Diagrams within this document may not be drawn proportionally. Due to continuing improvements, actual product may differ slightly from the product described herein. Tools required for assembly and service may not be included.

## 5 Gallon Pail Pump

**Item 95068**

### INSTRUCTIONS AND PRECAUTIONS



Visit our website at:  
<http://www.harborfreight.com>

### **!**WARNING

**Read this material before using this product. Failure to do so can result in serious injury. SAVE THIS MANUAL.**

When unpacking, make sure that the product is intact and undamaged. If any parts are missing or broken, please call 1-800-444-3353 as soon as possible.

**For technical questions or replacement parts, please call 1-800-444-3353.**

### Specifications

Construction	Black PP T-Handle with molded finger grip, aluminum spout; Ground Shaft with O-ring seals
Overall Dimensions	19.3 IN. L X 2.6 IN. D.
Pump Output Spout	8 IN. L X 1/2 IN. D.
Delivery Hose	Clear vinyl with coil spring; 47 IN. L X 5/8 IN. D.
Spout Hole	9/32 IN. D.
Output per Pump	approximately 60 ml
Features	Head swivels 360 degrees; includes Bung Adapter and Vinyl Hose

### Important Safety Information

1. For use with oil only. Do not use with water. Do not use with corrosive liquids. Do not use with gasoline.
2. Wear ANSI-approved safety goggles and heavy-duty work gloves during use.
3. Keep area clean and well lit.
4. Do not operate when tired or when under the influence of drugs or medication.

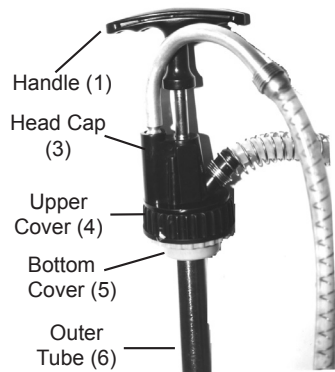
5. This product is not a toy. Do not allow children to play with or near this item.
6. Use as intended only.
7. The container (not included) that the oil will be siphoned into must be set onto a flat and level surface capable of supporting the container and the transferred oil.
8. Do not pump used, dirty oil.
9. Do not leave pump unattended while operating.
10. Do not use near open flame or heat sources.
11. Use only on a flat surface capable of supporting the Pail Pump and its contents.
12. Know and obey city and state laws for proper disposal of oil. Dispose of oil properly in accordance with all local laws and regulations.
13. Inspect before every use; do not use if parts are loose or damaged.
14. Maintain product labels and nameplates. These carry important safety information. If unreadable or missing, contact Harbor Freight Tools for a replacement.

## Operating Instructions



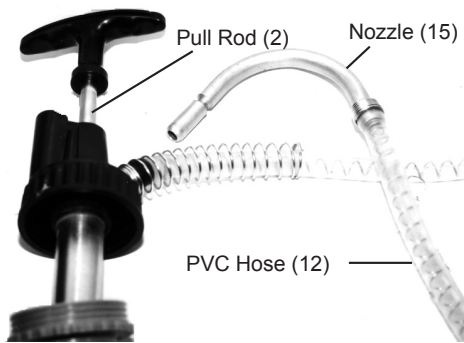
Read the **ENTIRE IMPORTANT SAFETY INFORMATION** section at the beginning of this document including all text under subheadings therein before set up or use of this product.

**Note:** Bottom Cover (5) has an adapter to attach a hose (not included).



**Figure 1**

1. Insert the Outer Tube (6) into the container of oil through the opening on the cover. Set the Head Cap (3), Upper Cover (4) and Bottom Cover (5) with adapter to the bung of the pail-see Figure 1. Thread into place.
2. Run the PVC Hose (12) into a container (not included) in which to siphon the oil. Make certain that the container is large enough to contain the entire emptied contents of the pail.



**Figure 2**

3. Make certain that the Mouth (11) of the Outer Tube is submerged into the oil you are planning to transfer. Pump the Pull Rod (2) up and down using the Handle (1) - see Figure 2.
4. When the transfer is finished, pump the Pail Pump fully until it runs dry.
5. Remove the Pail Pump from the pail and wipe it dry.
6. Dispose of the oil properly. Know and obey city and state laws for proper disposal of oil. Dispose of oil properly in accordance with all local laws and regulations.

## Maintenance

1. Regularly clean the exposed parts of the Pail Pump after each use. Clean Pump with warm water and a mild household detergent. Dry with a clean cloth.
2. Periodically use a light oil lubricant on the Handle assembly.
3. Store in a dry place out of the reach of children.
4. Check all hoses and connections for damage, leaks and kinks in the line. Check hoses for blockage. Do not use a damaged Pail Pump. Replacement parts are available through Harbor Freight Tools.

## Troubleshooting

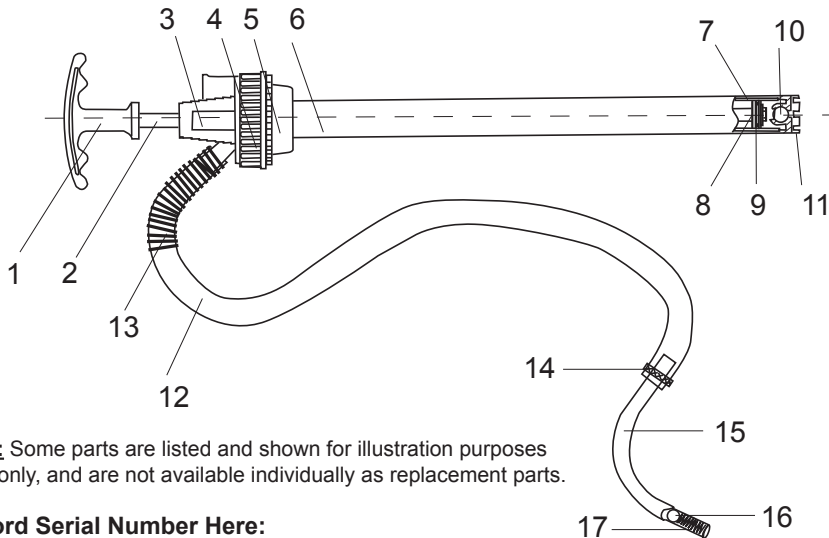
### Pump does not draw up oil.

- a. Make certain Upper Cover and Bottom Cover (5) are securely attached to the bung of the pail.
- b. Make certain Nozzle (15) is free of dirt and debris.
- c. Make certain Outer Tube (6) Mouth (11) is free of dirt and debris.
- d. Check that Mouth (11) is submerged into fluid to be pumped.
- e. Fluid to be pumped may be too thick. Be certain to pump only light weight oils to gear oils.

# Parts List and Assembly Diagram

Part	Description	Qty
1	Handle	1
2	Pull Rod	1
3	Head Cap	1
4	Upper Cover	1
5	Bottom Cover	1
6	Outer Tube	1
7	Inner Tube	1
8	Seal Cover	1
9	O-Ring	1

Part	Description	Qty
10	Steel Ball	1
11	Mouth	1
12	PVC Hose	1
13	Spring	1
14	Spring	1
15	Nozzle	1
16	Steel Ball	1
17	Spring	1



**Note:** Some parts are listed and shown for illustration purposes only, and are not available individually as replacement parts.

**Record Serial Number Here:**

Note: If product has no serial number, record month and year of purchase instead.

## PLEASE READ THE FOLLOWING CAREFULLY

THE MANUFACTURER AND/OR DISTRIBUTOR HAS PROVIDED THE PARTS LIST IN THIS DOCUMENT AS A REFERENCE TOOL ONLY. NEITHER THE MANUFACTURER OR DISTRIBUTOR MAKES ANY REPRESENTATION OR WARRANTY OF ANY KIND TO THE BUYER THAT HE OR SHE IS QUALIFIED TO MAKE ANY REPAIRS TO THE PRODUCT, OR THAT HE OR SHE IS QUALIFIED TO REPLACE ANY PARTS OF THE PRODUCT. IN FACT, THE MANUFACTURER AND/OR DISTRIBUTOR EXPRESSLY STATES THAT ALL REPAIRS AND PARTS REPLACEMENTS SHOULD BE UNDERTAKEN BY CERTIFIED AND LICENSED TECHNICIANS, AND NOT BY THE BUYER. THE BUYER ASSUMES ALL RISK AND LIABILITY ARISING OUT OF HIS OR HER REPAIRS TO THE ORIGINAL PRODUCT OR REPLACEMENT PARTS THERETO, OR ARISING OUT OF HIS OR HER INSTALLATION OF REPLACEMENT PARTS THERETO.

# **PITTSBURGH**® **AUTOMOTIVE**

3491 Mission Oaks Blvd. • PO Box 6009 • Camarillo, CA 93011 • (800) 444-3353