

ITEM 95701

PITTSBURGH

1,000 FOOT MEASURING WHEEL



Copyright © 2007 by Harbor Freight Tools®. All rights reserved.
No portion of this manual or any artwork contained herein may be reproduced in any shape or form without the express written consent of Harbor Freight Tools.

For technical questions and replacement parts, please call 1-800-444-3353.

Invoice No. _____ Purchase Date: _____

Operating Instructions

Specifications: For use in home or yard measurements; great for landscaping, fencing, irrigation surveys, trenching and many more uses.

Wheel measures up to 1,000 feet; Handle Length: 15-1/8", extended 35-3/4";
Handle Diameter: 1", Wheel Diameter: 5-5/8" x 7/8"; Easy to use Push Button Counter;

Note: This Measuring Wheel is designed to provide estimates of distances. Because the wheel rolls on different surfaces, both smooth and bumpy, the Measuring Wheel cannot be relied on to provide precise measurements.

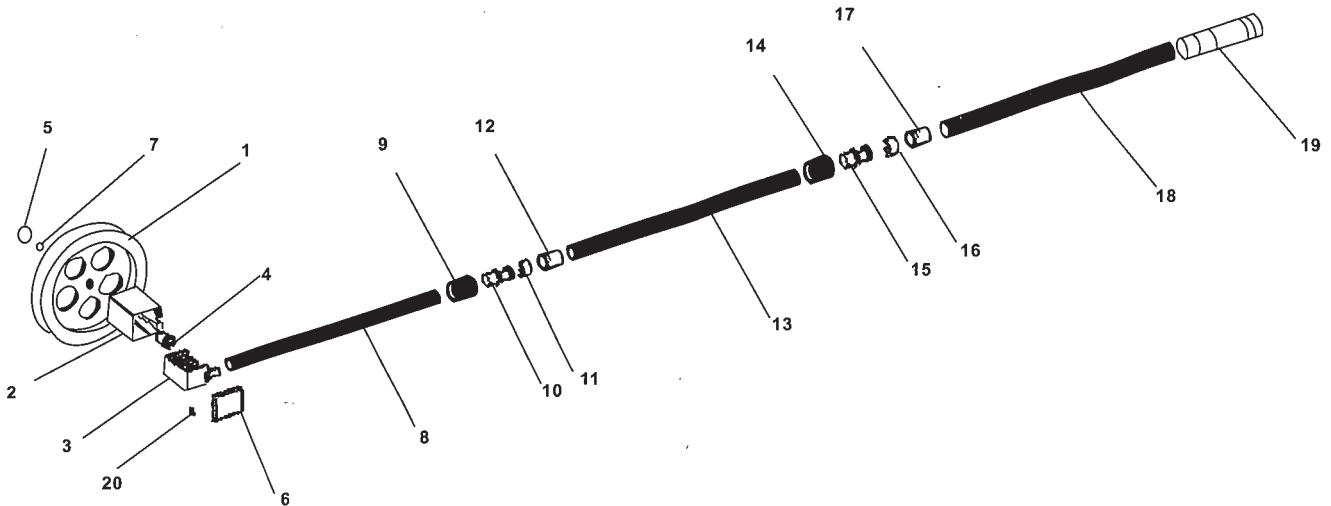
Warning:

1. Read this instruction sheet before using the Measuring Wheel.
2. Always wear ANSI approved safety goggles when working with tools and equipment.

Operating Instructions

1. Adjust the Extension Handle to the desired position.
2. Set the Measuring Wheel on the beginning point to be measured. Push the Counter (3) button and walk to the end of the point to be measured. While leaving the Extension Handle in the same position it was in when the measurement started, read the estimated distance in feet on the Counter. When completed, push the Counter button to reset.

Diagram/Parts List



Part No.	Description	QTY	Part No.	Description	QTY
1	Wheel	1	11	Small Lock Head	1
2	Display Cover	1	12	Inner Sleeve for Middle Tube	1
3	Counter	1	13	Middle Tube	1
4	Center Shaft	1	14	Outer Sleeve for Middle Tube	1
5	Wheel Nut	1	15	Large Lock	1
6	Side Cover	1	16	Large Lock Head	1
7	Small Screw	1	17	Inner Sleeve for Large Tube	1
8	Small Tube	1	18	Large Tube	1
9	Outer Sleeve for Small Tube	1	19	Handle Cover	1
10	Small Lock	1	20	Handle Fasten Screw	1