

CENTRALPNEUMATIC®

6 - COLOR AIR BRUSH KIT

WITH HOLDER

Model 95923

ASSEMBLY AND OPERATING INSTRUCTIONS



Visit our website at: <http://www.harborfreight.com>



**Read this material before using this product.
Failure to do so can result in serious injury.
SAVE THIS MANUAL.**

Copyright© 2007 by Harbor Freight Tools®. All rights reserved. No portion of this manual or any artwork contained herein may be reproduced in any shape or form without the express written consent of Harbor Freight Tools. Diagrams within this manual may not be drawn proportionally. Due to continuing improvements, actual product may differ slightly from the product described herein. Tools required for assembly and service may not be included.

For technical questions or replacement parts, please call 1-800-444-3353.

Revised Manual 10h

SPECIFICATIONS

Air Brush: (Quantity - 6)	
Overall dimensions:	5-11/16" L X 3/8" W X 1-1/2" H
Aluminum Cap colors:	Black, Green, Purple, Gold yellow, Red, Dark blue.
Air Inlet size:	1/8" X 28 NPS Thread
Nozzle:	.35mm = .01377949"
Working Air Pressure:	15 to 50 PSI
Hose Maximum Air Pressure:	85 PSI
Air flow adjustable control:	Manometer finger lever pressure regulator
Air Hose dimensions:	6'- 2-1/2" L X .275" O.D. (Quantity - 6)
Air Hose thread fitting:	1/8"-28 NPS
Wrenches:	7mm (Quantity - 3)
Glass Jar capacity:	22cc (Quantity - 6)
Glass Jar dimensions:	2-5/8" H X 1-3/8 Diameter
Air Brush Holder:	
Stand dimensions:	8-1/4" H X 5-1/8 Diameter
Stand capacity:	8 Air Brushes
Air Fittings:	7, one Air inlet and six outlets
Pressure Gauge markings:	0-140 PSI (20 increments), 0-10 bar (2 increments)

Save This Manual

You will need this manual for the safety warnings and precautions, assembly, operating, inspection, maintenance and cleaning procedures, parts list and assembly diagram. Keep your invoice with this manual. Write the invoice number on the inside of the front cover. Write the product's serial number in the back of the manual near the assembly diagram, or write month and year of purchase if product has no serial number. Keep this manual and invoice in a safe and dry place for future reference.

GENERAL SAFETY RULES



READ AND UNDERSTAND ALL INSTRUCTIONS
Failure to follow all instructions listed below may result in
fire, and/or serious injury.
SAVE THESE INSTRUCTIONS

WORK AREA

1. **Keep your work area clean and well lit.** Cluttered benches and dark areas invite accidents.
2. **Keep bystanders, children, and visitors away while operating.** Provide barriers or shields as needed.
3. **Wear protection:** Always wear ANSI-approved safety goggles when using, or servicing this Air Brush Kit. If you are working in enclosed spaces, it is recommended that you wear an approved breathing air respirator. A dust mask will not filter fumes.
4. **Do not exceed maximum working air pressure of 50 PSI.**
5. **Do not operate in explosive atmospheres, such as in presence of flammable liquids, gases, or dust.** Doing so may create sparks which may ignite dust or fumes.
6. **Do not operate near appliances that may have open flame pilot lights.** These may ignite fumes from the Air Brushes, especially if you are using paint products that are thinned or cleaned with flammable solvents.
7. **Store idle tools out of the reach of children and untrained users.** These Air Brushes are not toys and may be damaged if not used properly. Never allow Children to play with this product.
8. **Check these Air Brushes for any condition that may affect the tool's operation. If damaged, have the tool serviced before using.**

SERVICE

1. **This Air Brush Kit should be serviced only by qualified repair personnel.** Service or maintenance performed by unqualified personnel could result in a risk of damage to the tool.
2. **When servicing these Air Brushes or Air Brush Holder, use only identical replacement parts. Follow instructions in the “*Inspection, Maintenance, And Cleaning*” section of this manual.** Use of unauthorized parts or failure to follow maintenance instructions may create a risk of damage to the tool.

SPECIFIC SAFETY RULES

1. **Maintain labels and nameplates on the tool.** These carry important information. If unreadable or missing, contact Harbor Freight Tools for a replacement.
2. **These Air Brushes are for spraying paint only.** Never use them for spraying gasoline, kerosene or any other flammable solvent.

3. **Read and adhere to all safety warnings and instructions provided by the manufacturer of the air supply being used.**
4. **Avoid Injury. NEVER** direct compressed air, or paint from these Air Brushes at people or animals. **NEVER direct airflow, or paint at eyes, nose, or ears.**
5. **Maintain adequate ventilation, especially during cleanup procedures.**

WARNING: Some dust created by power sanding, sawing, grinding, drilling, and other construction activities, contains chemicals known [to the State of California] to cause cancer, birth defects or other reproductive harm. Some examples of these chemicals are:

Lead from lead-based paints

Crystalline silica from bricks and cement or other masonry products

Arsenic and chromium from chemically treated lumber

Your risk from these exposures varies, depending on how often you do this type of work. To reduce your exposure to these chemicals: work in a well ventilated area, and work with approved safety equipment, such as those dust masks that are specially designed to filter out microscopic particles. (California Health & Safety Code § 25249.5, *et seq.*)

WARNING: The brass components of this product contain lead, a chemical known to the state of California to cause birth defects (or other reproductive harm). California Health & Safety code § 25249.5, *et seq.*)


NOTE: All paints used with these Air Brushes are fast drying by design and can seriously damage your tools if they are not flushed with the proper cleaner immediately after using. NEVER let product sit inside the Air Brush units or Hoses for extended periods of time.

UNPACKING

When unpacking, check to make sure that the item is intact and undamaged. If any parts are missing or broken, please call Harbor Freight Tools at the number shown on the cover of this manual as soon as possible.

ASSEMBLY INSTRUCTIONS

NOTE: For additional information regarding the parts listed in the following pages, refer to the Assembly Diagram near the end of this manual.

 **WARNING!** Make sure the Air Brushes are unplugged from the air supply before making any adjustments or service.

1. An Air Hose (52) for each Air Brush Body (8), up to a maximum of six, and the air supply hose (52) must be threaded to the Input/Output Attachments (43) located at the base of the Air Brush Holder Assembly. One Air Hose (52) must then be threaded onto each Air Brush Body (8) to be used.

NOTE: The Air Hoses (52) are attached using a 7mm Wrench (25) (included).

2. You are now ready to attach the Glass Jar Assemblies (26) which the various colored paint for your project. Do this by simply pushing, and gently twisting the tapered end of the Glass Jar Assembly lid into the opening on the bottom of each Air Brush Body (8).

OPERATION INSTRUCTIONS

NOTE: Use the proper solvent for both thinning, and for cleaning. Use lacquer thinner for all lacquers, paint thinner/mineral spirits for all oil based paints and clean water for all vinyl or latex paints. Carefully read the label of all paint you are using for correct thinning and cleaning instructions.

1. Make sure you are operating at an air pressure range between 15 to 50 PSI.
2. Fill the Glass Jar Assembly (26) about one half to three quarters full after you've thinned your paint to the manufacturer's requirements.
3. Hold the Air Brush Body (8) lightly in your hand and push the tapered fitting on the lid of the Glass Jar Assembly (26) into the base of the Air Brush Body (8). It is held in place with friction, not threading. Now connect the air supply.
4. With the air supply connected, press the Finger Lever (10) and air will emerge from the Nozzle (3). Slowly/gently draw back on the Finger Lever (10) and the fluid will atomize. Continue to move the Finger Lever (10) back slowly to achieve the air volume you need for your spray technique.
5. **NOTE:** Test spraying on another piece of material is a must in order to make sure you have the right amount of air pressure and that your paint is properly thinned.
6. Continue to adjust the spray volume by using light adjustments of the Finger Lever (10), moving it front to back. When you have the correct setting you may fix the position using the Adjustment Screw (9).
7. The size of your spray pattern will be in accordance with the distance between the work surface and the Nozzle (3) of the Air Brush. For an extra-fine spray, remove the Protective Cap (1) and hold the Air Brush nearer the work surface.
5. When you are finished painting, loosen the Adjustment Screw (9) and gently release the pressure on the Finger Lever (10).
6. **NOTE:** If when you are using these Air Brushes any fluid blocks the Nozzle (3), move the Needle Chucking Guide (13) back and forth. If this method does not clear the Nozzle (3), try loosening the Needle Adjustment Screw (18) to allow the blocked fluid to escape, clearing the Nozzle (3).
7. Mix up to six different colors at a time using a different Air Brush for each color. When not using a particular color, suspend that Air Brush in one of the six Plastic Holders (34) attached to the Air Brush Holder Assembly. This will allow quick easy access to the different colors you are using on your project.

NOTE: When using multiple colors of any fast drying paint product, mix only those colors you will use within 30 to 45 minutes to reduce the chance of paint drying inside the Air Brush. Also, all solvents mixed with paint tends to slowly evaporate even when it is enclosed in a jar or metal container. Paint can thicken while it waits to be used and re-thinning could be a possibility. This includes water when used as a “solvent” for latex or acrylic based paint.

INSPECTION, MAINTENANCE, AND CLEANING

WARNING! Make sure the Air Brushes are disconnected from the air supply before performing any inspection, maintenance, or cleaning procedures.

- BEFORE EACH USE**, inspect the general condition of the Air Brushes and the Air Brush Holder. Check for loose screws, loose hose connections, cracked hoses and/or any other condition that may affect proper operation. If anything abnormal is found, have the problem corrected before further use. **Do not use damaged equipment.**

MAINTENANCE CHART						
Maintenance Type	Before Use	After Use	Weekly	Monthly	Every 6 Months	Yearly
Inspect Air Brushes and Holder for damage (see #1, above)	X			X		
Wipe off with clean, moist cloth		X		X		

TROUBLESHOOTING

Problem	Possible Causes	Probable Solutions
Poor atomization of paint.	<ol style="list-style-type: none"> Air connections not tight, or leaking. Paint not properly thinned. Air Brush Nozzle (3) is partially clogged. 	<ol style="list-style-type: none"> Check all air supply connections. Add solvent for your type of paint, in very small amounts and mix thoroughly. Wash out the Air Brush Nozzle (3).

PLEASE READ THE FOLLOWING CAREFULLY

THE MANUFACTURER AND/OR DISTRIBUTOR HAS PROVIDED THE PARTS LIST AND ASSEMBLY DIAGRAM IN THIS MANUAL AS A REFERENCE TOOL ONLY. NEITHER THE MANUFACTURER OR DISTRIBUTOR MAKES ANY REPRESENTATION OR WARRANTY OF ANY KIND TO THE BUYER THAT HE OR SHE IS QUALIFIED TO MAKE ANY REPAIRS TO THE PRODUCT, OR THAT HE OR SHE IS QUALIFIED TO REPLACE ANY PARTS OF THE PRODUCT. IN FACT, THE MANUFACTURER AND/OR DISTRIBUTOR EXPRESSLY STATES THAT ALL REPAIRS AND PARTS REPLACEMENTS SHOULD BE UNDERTAKEN BY CERTIFIED AND LICENSED TECHNICIANS, AND NOT BY THE BUYER. THE BUYER ASSUMES ALL RISK AND LIABILITY ARISING OUT OF HIS OR HER REPAIRS TO THE ORIGINAL PRODUCT OR REPLACEMENT PARTS THERETO, OR ARISING OUT OF HIS OR HER INSTALLATION OF REPLACEMENT PARTS THERETO.

LIMITED 90 DAY WARRANTY

Harbor Freight Tools Co. makes every effort to assure that its products meet high quality and durability standards, and warrants to the original purchaser that this product is free from defects in materials and workmanship for the period of 90 days from the date of purchase. This warranty does not apply to damage due directly or indirectly, to misuse, abuse, negligence or accidents, repairs or alterations outside our facilities, criminal activity, improper installation, normal wear and tear, or to lack of maintenance. We shall in no event be liable for death, injuries to persons or property, or for incidental, contingent, special or consequential damages arising from the use of our product. Some states do not allow the exclusion or limitation of incidental or consequential damages, so the above limitation of exclusion may not apply to you. THIS WARRANTY IS EXPRESSLY IN LIEU OF ALL OTHER WARRANTIES, EXPRESS OR IMPLIED, INCLUDING THE WARRANTIES OF MERCHANTABILITY AND FITNESS.

To take advantage of this warranty, the product or part must be returned to us with transportation charges prepaid. Proof of purchase date and an explanation of the complaint must accompany the merchandise. If our inspection verifies the defect, we will either repair or replace the product at our election or we may elect to refund the purchase price if we cannot readily and quickly provide you with a replacement. We will return repaired products at our expense, but if we determine there is no defect, or that the defect resulted from causes not within the scope of our warranty, then you must bear the cost of returning the product.

This warranty gives you specific legal rights and you may also have other rights which vary from state to state.

3491 Mission Oaks Blvd. • PO Box 6009 • Camarillo, CA 93011 • (800) 444-3353

Record Product's Serial Number Here: _____

Note: If product has no serial number, record month and year of purchase instead.

Note: Some parts are listed and shown for illustration purposes only, and are not available individually as replacement parts.

PARTS LIST

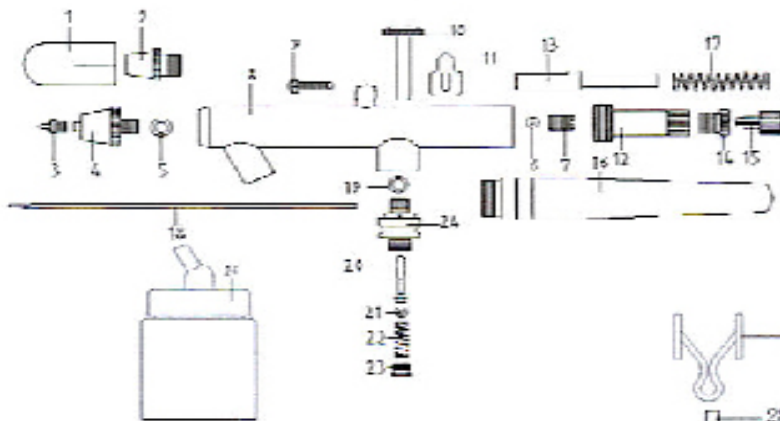
Part	Description	Q'ty
	AIR BRUSH ASSEMBLY:	
1	Protective Cap	1
2	Air Cap	1
3	Nozzle	1
4	Air Cap Body	1
5	O-ring	1
6	Packing	1
7	Packing Nut	1
8	Air Brush Body	1
9	Adjustment Screw	1
10	Finger Lever	1
11	Rocker	1
12	Needle Adjusting Sleeve	1
13	Needle Chucking Guide	1
14	Valve Screw	1
15	Needle Chucking Net	1
16	Needle Cover (Handle)	1
17	Spring	1
18	Needle Adjustment Screw	1
19	O-ring	1
20	Valve Rod	1
21	O-ring	1
22	Spring	1
23	Valve Screw	1
24	Valve Body	1
25	7mm Wrench	3
26	22cc Glass Jar Assembly	6
	AIR BRUSH HOLDER:	
27	Holder	2

Part	Description	Q'ty
28	Bush	1
29	Screw	1
30	Steel Column	1
31	Spring	1
32	Clip Card	2
33	Steel Ball	1
34	Plastic Holder	6
35	O-ring	1
36	Washer	1
37	Turnplate	1
38	Washer	1
39	Gauge Holder	1
40	Gauge	1
41	Connect to Base	1
42	O-ring	1
43	Input/Output Attachments	7
44	Adjustment Screw	1
45	O-ring	1
46	Valve Holder	1
47	O-ring	1
48	O-ring	1
49	Base 1	1
50	Base 2	1
51	Rubber Pad	3
52	Air Hose	7
53	Connector	14
54	Female Adjuster 1/4" 18 NPT	1
55	Blow Mold Case	1

ASSEMBLY DIAGRAM

6-color air brush kit

AIR BRUSH ASSEMBLY DIAGRAM



AIR BRUSH HOLDER ASSEMBLY DIAGRAM

