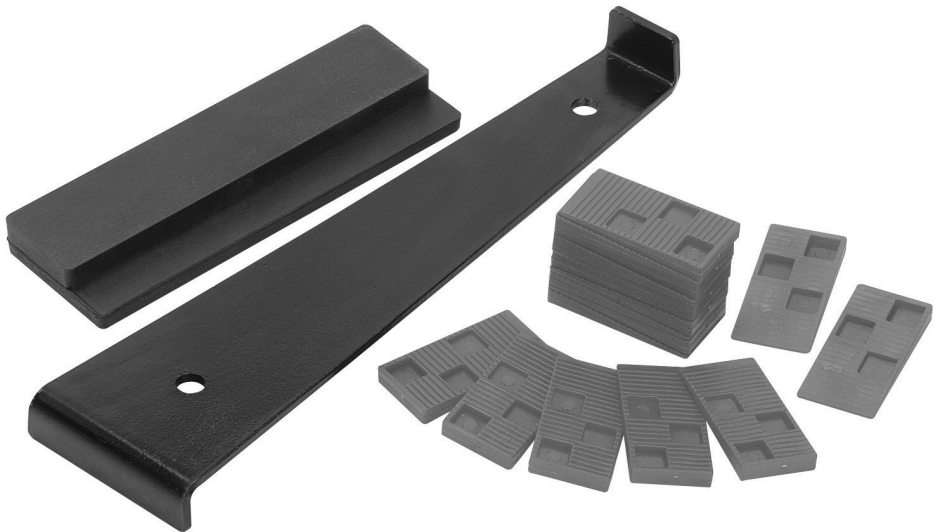


Owner's Manual & Safety Instructions

Save This Manual Keep this manual for the safety warnings and precautions, assembly, operating, inspection, maintenance and cleaning procedures. Write the product's serial number in the back of the manual near the assembly diagram (or month and year of purchase if product has no number). Keep this manual and the receipt in a safe and dry place for future reference.

Finch
&
McLay **FLOOR™**

FLOOR INSTALLATION KIT



REV 14b

Visit our website at: <http://www.harborfreight.com>
Email our technical support at: productsupport@harborfreight.com

ITEM 96447

When unpacking, make sure that the product is intact and undamaged. If any parts are missing or broken, please call 1-888-866-5797 as soon as possible.

Copyright© 2006 by Harbor Freight Tools®. All rights reserved.

No portion of this manual or any artwork contained herein may be reproduced in any shape or form without the express written consent of Harbor Freight Tools. Diagrams within this manual may not be drawn proportionally. Due to continuing improvements, actual product may differ slightly from the product described herein. Tools required for assembly and service may not be included.

⚠WARNING

**Read this material before using this product.
Failure to do so can result in serious injury.
SAVE THIS MANUAL.**

SPECIFICATIONS

| | |
|---------------|---|
| Pull Bar | Carbon Steel 11-7/8 L X 3-1/64" W X 1-19/32" H |
| Tapping Block | Black Rubber 6-7/8" L X 2-19/64" W X 13/16" H |
| Spacer | PVC (20 included) 2-23/64" L X 1-5/32" W X 9/32" H |

Save This Manual

You will need this manual for the safety warnings and precautions, assembly, operating, inspection, maintenance and cleaning procedures, parts list and assembly diagram. Keep your invoice with this manual. Write the invoice number on the inside of the front cover. Write the product's serial number in the back of the manual near the assembly diagram, or write month and year of purchase if product has no number. Keep this manual and invoice in a safe and dry place for future reference.

SAFETY RULES

 **WARNING!**

READ AND UNDERSTAND ALL INSTRUCTIONS
Failure to follow all instructions listed below may result in
serious injury.
SAVE THESE INSTRUCTIONS

1. **Keep your work area clean and well lit.** Clutter invites accidents.
2. **Keep bystanders, children, and visitors away while working with this Installation Kit.** Protect others in the work area from debris. Provide barriers or shields as needed.
3. **Stay alert. Watch what you are doing, and use common sense. Do not use this Installation Kit while tired or under the influence of drugs, alcohol, or medication.** A moment of inattention may result in serious personal injury.
4. **Do not overreach. Keep proper footing and balance at all times.** Proper footing and balance enables better control in unexpected situations.
5. **Always wear ANSI-approved safety goggles and heavy-duty work gloves when using the Installation Kit.**
6. **Maintain labels and nameplates on the tool.** These carry important information. If unreadable or missing, contact Harbor Freight Tools for a replacement.

UNPACKING

When unpacking, make sure that the item is intact and undamaged. If any parts are missing or broken, please call Harbor Freight Tools at 1-888-866-5797 as soon as possible.

OPERATING INSTRUCTIONS

1. The three parts to this Floor Installation Kit are used to help install wood plank flooring and have it come out as straight and even as possible.
2. The metal Pry Bar (1), Tapping Block (2) and Spacers (3) are used to maintain even spacing from walls or other obstacles.
3. Snap a line on the sub-floor about 1/2" from a wall and lay down your first row of wood planks, or strips. From here on these three tools will be a great assistance in your job.

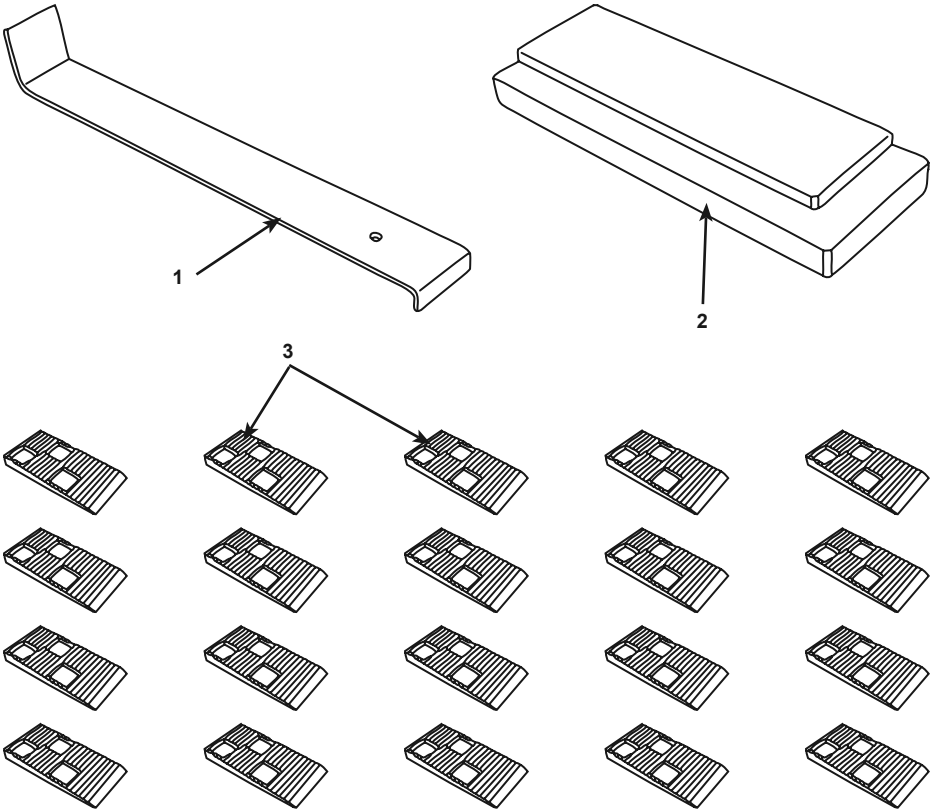
NOTE: This 1/2" gap allows for expansion.

4. As you lay subsequent strips, use the Pry Bar (1) to gently force the boards together and the Spacers (3) to maintain even spacing. Use a spacer (3) every 18".
5. Use the Tapping Block (2) to gently interlock each new row of wood planking or strip of wood by sliding and tapping along the entire length of the new wood flooring.
6. Keeping all rows snug and spaced evenly will make the job look professional.

PARTS LIST

| Part | Description | Q'ty |
|------|---------------|------|
| 1 | Pry Bar | 1 |
| 2 | Tapping Block | 1 |
| 3 | Spacers | 20 |

ASSEMBLY DIAGRAM



PLEASE READ THE FOLLOWING CAREFULLY

THE MANUFACTURER AND/OR DISTRIBUTOR HAS PROVIDED THE PARTS LIST AND ASSEMBLY DIAGRAM IN THIS MANUAL AS A REFERENCE TOOL ONLY. NEITHER THE MANUFACTURER OR DISTRIBUTOR MAKES ANY REPRESENTATION OR WARRANTY OF ANY KIND TO THE BUYER THAT HE OR SHE IS QUALIFIED TO MAKE ANY REPAIRS TO THE PRODUCT, OR THAT HE OR SHE IS QUALIFIED TO REPLACE ANY PARTS OF THE PRODUCT. IN FACT, THE MANUFACTURER AND/OR DISTRIBUTOR EXPRESSLY STATES THAT ALL REPAIRS AND PARTS REPLACEMENTS SHOULD BE UNDERTAKEN BY CERTIFIED AND LICENSED TECHNICIANS, AND NOT BY THE BUYER. THE BUYER ASSUMES ALL RISK AND LIABILITY ARISING OUT OF HIS OR HER REPAIRS TO THE ORIGINAL PRODUCT OR REPLACEMENT PARTS THERETO, OR ARISING OUT OF HIS OR HER INSTALLATION OF REPLACEMENT PARTS THERETO.